

May 17, 2000

Dear Reader:

I am pleased to present the ***1999 Florida Crash Facts Report***. This report contains data from the Department's crash database, compiled from traffic crash reports completed by state and local law enforcement agencies. The mission of the Department of Highway Safety and Motor Vehicles is to make highways safe through service, education and enforcement. Overall, in 1999, there were:

9,638 fewer traffic injuries and 2,031 fewer crashes compared to 1998;

32% of traffic fatalities and 9% of traffic crashes were alcohol-related;

64% of drivers using safety belts avoided injury;

78% of children under 4 years of age avoided injuries by being properly restrained; and

73% of children 4-5 years of age avoided injury by being properly restrained.

The tables in this report are used to assist in understanding problems and creating solutions that will ultimately aid in reducing deaths and injuries from motor vehicle crashes. This information is also available on the Department's WEB site <http://www.hsmv.state.fl.us>. Should you require additional information, please do not hesitate to contact our Office of Management Research and Development at (850) 488-4300.

On behalf of the Department of Highway Safety and Motor Vehicles, we hope you will find this publication useful.

Sincerely,

Fred O. Dickinson
Executive Director

1999 FLORIDA TRAFFIC CRASH STATISTICS

Traffic crashes	243,409
Drivers involved	373,693
Average crashes per day	667
Fatalities	2,920
Fatal crashes	2,625
Injuries	232,225
Injury crashes	143,172
Property damage only crashes	97,612
Alcohol-related fatalities	936
Alcohol-related injuries	19,073
Alcohol-related crashes	22,252
Alcohol-related fatal crashes	847
Alcohol-related injury crashes	11,534
Pedestrians killed	501
Pedestrians injured	7,536
Pedestrian crashes	8,157
Bicyclists killed	117
Bicyclists injured	4,766
Bicycle crashes	5,295
Motorcyclists killed	155
Motorcyclists injured	3,964
Motorcycle crashes	4,443

Prepared By:

Office of Management Research and Development
Office of the Executive Director
Florida Department of Highway Safety and Motor Vehicles
Neil Kirkman Building, M.S. 04
Tallahassee, FL 32399-0505
Telephone Assistance:
(850) 488-4300

This publication is available on the
Department of Highway Safety and Motor Vehicles
World Wide Web Site at
<http://www.hsmv.state.fl.us>

Table of Contents

1999 Florida Traffic Crash Facts

Source of Data	3
Definition of Terms	4-5
State of Florida Summary	6-7
Safety Equipment Use in Crashes	
Equipment Used By Drivers	8
Equipment Used By Vehicle Occupants Other Than Drivers.....	8
Equipment Used By Drivers and Other Vehicle Occupants.....	8
Equipment Used By Motorcyclists and Their Passengers	9
Equipment Used By Bicyclists and Their Passengers	9
Child Passengers and Safety Equipment	
Child Restraint Device and Safety Belt Use By Age (Under 4 and 4 to 5)	10
Child Passengers Injured or Killed	10
Age of Drivers in Crashes	
Crash Rates for Florida Resident Drivers in All Crashes by Age Groups	11
Crash Rates for Florida Resident Drinking Drivers in All Crashes by Age Groups	11
Selected Age Groups	
Crash Rates for Florida Resident Drivers in All crashes for a Selected Age Group (15 - 29)	12
Crash Rates for Florida Resident Drivers in All Crashes for a Selected Age Group (70 - 85+).....	12
Crash Rates for Florida Resident Drinking Drivers in All Crashes for a Selected Age Group (15 - 29)	13
Crash Rates for Florida Resident Drinking Drivers in All Crashes for a Selected Age Group (70 – 85+)	13
Driver Profile	
Drivers Killed or Injured by Residence and Gender	14
Drivers Involved in Crashes by Age Groups	14
Persons in Crashes by Age and Gender	
Persons Killed	15
Persons Injured.....	15
Motorcyclists and Bicyclists Crash Trends	
Motorcyclists and Bicyclists Killed.....	16
Motorcyclists and Bicyclists Injured.....	16
Pedestrian Fatality Trend	
Pedestrians Killed	17
Pedestrians Injured	17
Pedestrian Fatality Rate	18

Table of Contents**1999 Florida Traffic
Crash Facts****Pedestrian Behavior**

Pedestrians Killed in Crashes by Age and Type of Actions	19
Pedestrians Injured in Crashes by Age and Type of Actions	19
Pedestrians in Crashes by Age and Percent Drinking	20
Pedestrians in Crashes by Injury Severity and Percent Drinking	20

Truck Passengers

Passengers Riding in Beds of Light (pickup) Trucks by Numbers Killed/Injured .	21
Passengers Riding in Beds of All Types of Trucks by Numbers Killed/Injured	21

Florida Motoring Environment

Motoring Environment	22
----------------------------	----

Holiday Traffic Fatalities..... 23**Traffic Crashes by Month**

All Crashes.....	24
Fatal Crashes.....	24

Traffic Crashes by Day of Week and Time of Day

All Crashes/Fatal Crashes	25
---------------------------------	----

Contributing Causes

Actions Attributed to Drivers Involved in Crashes	26
---	----

Environmental Causes

Lighting Conditions at the Time of Crash.....	27
Road Surface Conditions at the Time of Crash	27
Type of Vehicle Collision	27

County Data (1995 Through 1999)

Crash History	29
Alcohol-Related Crash History	30
Fatality History.....	31
Alcohol-Related Fatality History	32
Injury History	33
Alcohol-Related Injury History	34
Property Damage Only Crash History	35
Bicycle Fatality History	36
Bicycle Injury History	37
Pedestrian Fatality History	38
Pedestrian Injury History	39

Vehicle and Truck Information

Crashes by Vehicle Type	40
Truck Crashes by Contributing Cause	40

Alcohol-Related Crashes by City/Locality 41-46**Traffic Crash report Form****Source of Data****1999 Florida Traffic**

Crash Facts

The information contained in this Traffic Crash Facts booklet is extracted from law enforcement agency long-form reports of traffic crashes. ¹A law enforcement officer must submit a long-form crash report when investigating:

Motor vehicle crashes resulting in death or personal injury, or

Motor vehicle crashes in which one or more of the following conditions occur:

Leaving the scene involving damage to an attended vehicle or property (Section 316.061 (1), F.S.);

Driving while under the influence of alcoholic beverages, chemical substances, or controlled substances or with an unlawful blood alcohol level (Section 316.193, F.S.).

An investigating officer may report other traffic crashes on the long-form crash report. In particular, applicable statutes specify an officer's discretion to submit a long-form report in crashes where a vehicle is rendered inoperable to the degree that a wrecker is required to remove it from traffic.

Statutory revisions in 1983 and 1989 reduced the number of non-injury crashes required to be reported to the Department. Any presentation of historical data that includes such crashes, such as total traffic crash counts, will reflect these changes. Data on traffic crashes involving death, injury, or other criteria for law enforcement long-form reports as outlined above are not affected.

Please Note:

All 1992 data in this publication have been updated from preliminary figures published in the Department of Highway Safety and Motor Vehicles Traffic Crash Data, 1992. Figures from the 1992 publication should not be used for year-to-year comparisons.

¹ Short form crash reports are for property damage that is less than \$500.00.

Definition of Terms

1999 Florida Traffic Crash Facts

The following terms are defined as they apply to the crash data presented in this publication. These definitions may differ from legal or other uses of the same terms.

Alcohol-related traffic crash	A crash involving a driver and/or pedestrian for whom alcohol use was reported (does not presume intoxication).
Bicycle	A vehicle propelled solely by human power or a motorized bicycle propelled by a combination of human power and an electric helper motor rated at 200 watts or less (this term does not include a vehicle with a seat height less than 26 inches from the ground when the seat is adjusted to its highest position, or a scooter or similar device).
Bicyclist	The driver of a bicycle. A passenger on a bicycle is considered a vehicle passenger.
Driver	Unless otherwise indicated, the operator of a motor vehicle or bicycle. Driver data typically exclude uninjured persons presumed to have been operating hit-and-run, phantom, or properly parked vehicles.
Fatal traffic crash	A traffic crash that results in one or more fatalities within thirty days of occurrence.
First harmful event	The first damage-producing event in a traffic crash.
Injury	Hurt, damage, or loss sustained by a person as a result of a traffic crash.
Possible injury	No visible signs of injury but complaint of pain or momentary unconsciousness.
Non-Incapacitating injury	Any visible injuries such as bruises, abrasions, limping, etc.
Incapacitating injury	Any visible signs of injury from a crash or person(s) who had to be carried from the scene.
Total injury	The sum of possible, non-incapacitating , and incapacitating injuries.
Injury crash	A traffic crash that results in one or more injuries that is not fatal.
Moped	A motor-powered cycle with a pedal-activated motor and two brakes horsepower maximum.
Motor vehicle	Any motorized vehicle not operating on rails.

Definition of terms

1999 Florida Traffic

(Continued)

Crash Facts

Motorcycle	A motor vehicle, with a seat or saddle for the driver's use, traveling with no more than three wheels in contact with the ground, excluding a tractor or a moped.
Motorcyclist	The driver of a motorcycle. A passenger on a motorcycle is considered a vehicle passenger.
Property damage only crash	Loss of all or part of an individual's property resulting from a traffic crash not involving injury to a person.
Traffic crash	A crash involving at least one motor vehicle on a roadway that is open to the public.
Traffic fatality	The death of a person as a direct result of a traffic crash within thirty days of the crash occurrence.
Vehicle occupants	Drivers and passengers of automobiles, vans, trucks, buses, and motor homes.

State of Florida Summary**1999 Florida Traffic
Crash Facts****ALL CRASHES**

Compared to 1998, there was a .83% decrease in traffic crashes investigated and reported.

Traffic crashes	243,409
Drivers involved.....	373,693
Average crashes per day	667

FATAL CRASHES AND FATALITIES

Compared to 1998, there was a 1.07% increase in traffic fatalities.

Fatalities.....	2,920
Fatal crashes.....	2,625

INJURY CRASHES

Compared to 1998, there was a 3.98% decrease in traffic injuries.

Possible injuries	126,077
Non-incapacitating injuries	76,147
Incapacitating injuries.....	30,001
Total injuries.....	232,225
Injury crashes.....	143,172

ALCOHOL-RELATED CRASHES AND FATALITIES

32.1% of traffic fatalities and 9.1% of traffic crashes were alcohol-related.

Alcohol-related fatalities	936
Alcohol-related injuries.....	19,073
Alcohol-related crashes.....	22,252
Alcohol-related fatal crashes.....	847
Alcohol-related injury crashes	11,534

CRASH ENVIRONMENTS

60.3% of all crashes occurred in primarily business areas, while 61.0% of fatal crashes were in open country or residential areas.

Crashes in Business Areas.....	146,845
Crashes in Residential Areas.....	69,279
Crashes in Open Country.....	27,285
Fatal Crashes in Business Areas.....	1,023
Fatal Crashes in Residential Areas.....	688
Fatal Crashes in Open Country.....	914

State of Florida Summary**1999 Florida Traffic
Crash Facts****PEDESTRIAN CRASHES**

17.2% of all traffic fatalities were pedestrians.

Pedestrians killed	501
Pedestrians injured	7,536
Pedestrian crashes*	8,157

BICYCLE CRASHES

4.0% of all traffic fatalities were bicycle drivers.

Bicyclists killed	117
Bicyclists injured.....	4,766
Bicycle crashes*	5,295

MOTORCYCLE CRASHES

5.3 % of all traffic fatalities were motorcycle drivers.

Motorcyclists killed	155
Motorcyclists injured.....	3,964
Motorcycle crashes	4,443

*Pedestrian and bicycle crashes included all crashes involving pedestrians or bicycles and are not comparable to crashes by the first harmful event as reported in previous editions.

Safety Equipment Use in Crashes*

1999 Florida Traffic Crash Facts

TABLE 1 Comparative Safety Equipment Use By Drivers

VEHICLE OCCUPANTS	No Injury	%	Possible Injury	%	Non-Incapacitating Injury	%	Incapacitating Injury	%	Fatal	%	% Total	Total
With Safety Belt	171,379	64.68	56,738	21.41	27,348	10.32	9,154	3.45	343	0.13	100.00	264,962
With Safety Belt & Air Bag	26,956	50.13	13,421	24.96	10,092	18.77	3,135	5.83	168	0.31	100.00	53,772
With Air Bag Only	585	29.19	679	33.88	436	21.76	262	13.07	42	2.10	100.00	2,004
Not Using Safety Equipment	18,753	47.37	8,134	20.55	7,378	18.64	4,466	11.28	857	2.16	100.00	39,588
TOTAL	217,673		78,972		45,254		17,017		1,410			360,326

Comparative Safety Equipment Use By Vehicle Occupants Other Than Drivers

VEHICLE OCCUPANTS	No Injury	%	Possible Injury	%	Non-Incapacitating Injury	%	Incapacitating Injury	%	Fatal	%	% Total	Total
With Safety Belt	74,698	62.82	27,799	23.38	12,316	10.36	3,936	3.31	162	0.14	100.00	118,911
With Safety Belt & Air Bag	6,729	49.33	3,508	25.72	2,464	18.06	877	6.43	62	0.45	100.00	13,640
With Air Bag Only	168	30.16	159	28.55	142	25.49	82	14.72	6	1.08	100.00	557
Not Using Safety Equipment	23,876	57.55	7,623	18.37	6,344	15.29	3,199	7.71	446	1.08	100.00	41,488
TOTAL	105,471		39,089		21,266		8,094		676			174,596

TABLE 1A Comparative Safety Equipment Use By Drivers and Other Vehicle Occupants

VEHICLE OCCUPANTS	No Injury	%	Possible Injury	%	Non-Incapacitating Injury	%	Incapacitating Injury	%	Fatal	%	% Total	Total
With Safety Belt	246,077	64.10	84,537	22.02	39,664	10.33	13,090	3.41	505	0.13	100.00	383,873
With Safety Belt & Air Bag	33,685	49.97	16,929	25.11	12,556	18.63	4,012	5.95	230	0.34	100.00	67,412
With Air Bag Only	753	29.40	838	32.72	578	22.57	344	13.43	48	1.87	100.00	2,561
Not Using Safety Equipment	42,629	52.58	15,757	19.43	13,722	16.92	7,665	9.45	1,303	1.61	100.00	81,076
TOTAL	323,144		118,061		66,520		25,111		2,086			534,922

*Does not include cases with safety equipment use or injury level not stated.

Safety Equipment Use in Crashes*

1999 Florida Traffic Crash Facts

TABLE 1B Comparative Safety Equipment Use By Motorcyclists and Their Passengers

MOTORCYCLISTS	No Injury	%	Possible Injury	%	Non-Incapacitating Injury	%	Incapacitating Injury	%	Fatal	%	% Total	Total
With Safety Helmet												
Driver	226	6.80	552	16.62	1,419	42.72	992	29.86	133	4.00	100.00	3,322
Passenger	55	13.00	69	16.31	163	38.53	126	29.79	10	2.36	100.00	423
TOTAL	281		621		1,582		1,118		143			3,745
Without Safety Helmet												
Driver	191	15.90	245	20.40	469	39.05	274	22.81	22	1.83	100.00	1,201
Passenger	52	28.73	43	23.76	57	31.49	29	16.02	0	0.00	100.00	181
TOTAL	243		288		526		303		22			1,382

TABLE 1C Comparative Safety Equipment Use By Bicyclists and Their Passengers

BICYCLISTS	No Injury	%	Possible Injury	%	Non-Incapacitating Injury	%	Incapacitating Injury	%	Fatal	%	% Total	Total
With Safety Helmet												
Driver	25	4.32	150	25.91	312	53.89	86	14.85	6	1.04	100.00	579
Passenger	3	25.00	2	16.67	4	33.33	3	25.00	0	0.00	100.00	12
TOTAL	28		152		316		89		6			591
Without Safety Helmet												
Driver	435	9.19	1,348	28.49	2,050	43.32	789	16.67	110	2.32	100.00	4,732
Passenger	97	51.60	37	19.68	41	21.81	10	5.32	3	1.60	100.00	188
TOTAL	532		1,385		2,091		799		113			4,920

*Does not include cases with safety equipment use or injury level not stated.

NOTE: Injuries reported for motorcyclists and bicyclists include all bodily injuries (head injuries are not separated from other injuries).

Child Passengers and Safety Equipment*

1999 Florida Traffic Crash Facts

**Child Restraint Device and Safety Belt Use
By Age (Under 4 and 4 to 5)**

TABLE 2

Child Restraint Use	Age Group	No Injury	%	Injury	%	Fatal	%	% Total	TOTAL
With Restraint	<4	7,298	77.64	2,096	22.30	6	0.06	100	9,400
	4 to 5	4,548	73.32	1,652	26.63	3	0.05	100	6,203
Without Restraint	<4	573	55.10	458	44.04	9	0.87	100	1,040
	4 to 5	406	53.21	351	46.00	6	0.79	100	763

**Child Passengers Injured or Killed
1990 Through 1999**

TABLE 3

Year	Age Group By Injury Level								TOTAL
	Injury				Fatal				
	<4	%	4 to 5	%	<4	%	4 to 5	%	
1990	3,143	11.40	2,128	10.13	23	11.92	12	11.43	5,306
1991	2,866	10.40	1,861	8.86	18	9.33	9	8.57	4,754
1992	2,882	10.46	1,935	9.21	29	15.03	7	6.67	4,853
1993	2,685	9.74	1,975	9.40	24	12.44	8	7.62	4,692
1994	2,735	9.92	2,173	10.34	21	10.88	16	15.24	4,945
1995	2,652	9.62	2,238	10.65	13	6.74	14	13.33	4,917
1996	2,730	9.91	2,300	10.95	19	9.84	9	8.57	5,058
1997	2,740	9.94	2,215	10.54	12	6.22	9	8.57	4,976
1998	2,572	9.33	2,186	10.40	19	9.84	12	11.43	4,789
1999	2,554	9.27	2,003	9.53	15	7.77	9	8.57	4,581
TOTAL	27,559	100	21,014	100	193	100	105	100	48,871

*Does not include passengers of bicycles, motorcycles, buses, or all-terrain vehicles.

Age of Drivers in Crashes*

1999 Florida Traffic
Crash Facts

TABLE 4 Crash Rates for Florida Resident Drivers in All Crashes By Age Groups

Age Groups	Driver Licenses Issued	Drivers in All Crashes	Rate Per 10,000 Licensed Drivers	Drivers in Fatal Crashes	Rate Per 10,000 Licensed Drivers
Under 15	0	456		3	
15-19	686,287	40,971	597.00	401	5.84
20-24	1,056,064	44,914	425.30	402	3.81
25-29	1,285,248	40,804	317.48	439	3.42
30-34	1,339,361	38,470	287.23	393	2.93
35-39	1,472,163	39,603	269.01	407	2.76
40-44	1,363,124	34,029	249.64	339	2.49
45-49	1,177,600	26,800	227.58	289	2.45
50-54	1,041,053	21,068	202.37	239	2.30
55-59	848,073	15,771	185.96	198	2.33
60-64	714,608	11,854	165.88	132	1.85
65-69	676,061	9,704	143.54	103	1.52
70-74	656,411	8,797	134.02	124	1.89
75-79	543,248	7,231	133.11	136	2.50
80-84	335,725	4,527	134.84	119	3.54
85 and over	203,869	2,975	145.93	85	4.17
Not Stated	0	2,398		18	
TOTAL	13,398,895	350,372		3,827	

TABLE 5 Crash Rates for Florida Resident Drinking Drivers in All Crashes By Age Groups

Age Groups	Driver Licenses Issued	Drinking Drivers in All Crashes	Rate Per 10,000 Licensed Drivers	Drinking Drivers in Fatal Crashes	Rate Per 10,000 Licensed Drivers
Under 15	0	11		0	
15-19	686,287	1,045	15.23	55	0.80
20-24	1,056,064	2,563	24.27	89	0.84
25-29	1,285,248	2,280	17.74	106	0.82
30-34	1,339,361	2,222	16.59	86	0.64
35-39	1,472,163	2,502	17.00	101	0.69
40-44	1,363,124	2,161	15.85	82	0.60
45-49	1,177,600	1,379	11.71	51	0.43
50-54	1,041,053	878	8.43	33	0.32
55-59	848,073	514	6.06	17	0.20
60-64	714,608	365	5.11	12	0.17
65-69	676,061	246	3.64	7	0.10
70-74	656,411	198	3.02	8	0.12
75-79	543,248	108	1.99	5	0.09
80-84	335,725	60	1.79	6	0.18
85 and over	203,869	48	2.35	5	0.25
Not Stated	0	171		4	
TOTAL	13,398,895	16,751		667	

* Does not include drivers of bicycles, mopeds, ATVs, or trains in "all crashes" and in "fatal crashes" categories on both tables.

Selected Age Groups*

1999 Florida Traffic
Crash Facts

TABLE 6
Crash Rates for Florida Resident Drivers
In All Crashes for a Selected Age Group (15 - 29)

Age of Driver	Driver Licenses Issued	Drivers in All Crashes	Rate Per 10,000 Licensed Drivers	Drivers in Fatal Crashes	Rate Per 10,000 Licensed Drivers
Under 15		456		3	
15	57,615	642	111.43	8	1.39
16	119,837	7,426	619.68	57	4.76
17	151,182	9,972	659.60	88	5.82
18	170,400	11,815	693.37	120	7.04
19	187,253	11,116	593.64	128	6.84
20	196,410	10,090	513.72	95	4.84
21	204,515	9,435	461.34	80	3.91
22	218,653	8,933	408.55	91	4.16
23	215,253	8,205	381.18	74	3.44
24	221,233	8,251	372.96	62	2.80
25	234,738	7,887	335.99	84	3.58
26	240,652	8,108	336.92	78	3.24
27	253,503	8,278	326.54	91	3.59
28	275,600	8,467	307.22	89	3.23
29	280,755	8,064	287.23	97	3.45

TABLE 6A
Crash Rates for Florida Resident Drivers
In All Crashes for a Selected Age Group (70 - 85+)

Age of Driver	Driver Licenses Issued	Drivers in All Crashes	Rate Per 10,000 Licensed Drivers	Drivers in Fatal Crashes	Rate Per 10,000 Licensed Drivers
70	134,044	1,806	134.73	25	1.87
71	135,600	1,791	132.08	26	1.92
72	133,998	1,769	132.02	20	1.49
73	128,034	1,706	133.25	26	2.03
74	124,735	1,725	138.29	27	2.16
75	122,114	1,612	132.01	27	2.21
76	114,192	1,486	130.13	31	2.71
77	107,605	1,404	130.48	22	2.04
78	105,385	1,441	136.74	22	2.09
79	93,952	1,288	137.09	34	3.62
80	81,542	1,059	129.87	24	2.94
81	76,524	1,021	133.42	29	3.79
82	67,618	922	136.35	26	3.85
83	58,059	796	137.10	23	3.96
84	51,982	729	140.24	17	3.27
85 and Over	203,869	2,975	145.93	85	4.17

* Does not include drivers of bicycles, mopeds, ATVs, or trains in "all crashes" and in "fatal crashes" categories on both tables.

Selected Age Groups*

1999 Florida Traffic
Crash Facts

TABLE 7
Crash Rates for Florida Resident Drinking Drivers
In All Crashes for a Selected Age Group (15 - 29)

Age of Driver	Driver Licenses Issued	Drinking Drivers in All Crashes	Rate Per 10,000 Licensed Drivers	Drinking Drivers in Fatal Crashes	Rate Per 10,000 Licensed Drivers
Under 15		11		0	
15	57,615	11	1.91	0	0.00
16	119,837	88	7.34	0	0.00
17	151,182	178	11.77	8	0.53
18	170,400	336	19.72	17	1.00
19	187,253	432	23.07	30	1.60
20	196,410	456	23.22	22	1.12
21	204,515	579	28.31	12	0.59
22	218,653	540	24.70	15	0.69
23	215,253	503	23.37	19	0.88
24	221,233	485	21.92	21	0.95
25	234,738	441	18.79	16	0.68
26	240,652	449	18.66	19	0.79
27	253,503	455	17.95	22	0.87
28	275,600	455	16.51	20	0.73
29	280,755	480	17.10	29	1.03

TABLE 7A
Crash Rates for Florida Resident Drinking Drivers
In All Crashes for a Selected Age Group (70 - 85+)

Age of Driver	Driver Licenses Issued	Drinking Drivers in All Crashes	Rate Per 10,000 Licensed Drivers	Drinking Drivers in Fatal Crashes	Rate Per 10,000 Licensed Drivers
70	134,044	43	3.21	1	0.07
71	135,600	48	3.54	3	0.22
72	133,998	36	2.69	0	0.00
73	128,034	41	3.20	3	0.23
74	124,735	30	2.41	1	0.08
75	122,114	25	2.05	2	0.16
76	114,192	24	2.10	0	0.00
77	107,605	22	2.04	0	0.00
78	105,385	18	1.71	2	0.19
79	93,952	19	2.02	1	0.11
80	81,542	12	1.47	1	0.12
81	76,524	16	2.09	1	0.13
82	67,618	9	1.33	0	0.00
83	58,059	13	2.24	1	0.17
84	51,982	10	1.92	3	0.58
85 and Over	203,869	48	2.35	5	0.25

* Does not include drivers of bicycles, mopeds, ATVs, or trains in "all crashes" and in "fatal crashes" categories on both tables.

Driver Profile

1999 Florida Traffic
Crash Facts

TABLE 8 Drivers Killed or Injured By Residence and Gender*

Residence	Male		Female		Total Drivers Killed and Injured				All Drivers
	Drivers Killed	Drivers Injured	Drivers Killed	Drivers Injured	Drivers Killed	% Killed	Drivers Injured	% Injured	
% County of Crash	73.72	81.02	78.99	85.53	1,278	74.87	126,155	83.09	307,772
% Elsewhere In State	20.62	14.21	16.18	11.56	333	19.51	19,697	12.97	48,553
% Non-Resident of State	4.73	3.89	4.59	2.53	80	4.69	4,942	3.25	13,727
% Foreign	0.47	0.56	0.00	0.28	6	0.35	654	0.43	2,366
% Not Stated	0.47	0.33	0.24	0.11	10	0.59	385	0.25	1,275
Total	100	100	100	100	1,707	100	151,833	100	373,693

* Drivers whose gender was not stated are included in the total column for all drivers.

TABLE 9 Drivers Involved in Crashes by Age Groups*

Age	All Drivers	% All Drivers	Drivers Killed	% Drivers Killed	Drivers Injured	% Drivers Injured	% Total
15 & Under	2,704	0.72	27	1.58	2,008	1.32	2.90
16	7,687	2.06	17	1.00	2,965	1.95	2.95
17	10,279	2.75	33	1.93	4,224	2.78	4.72
18	12,256	3.28	51	2.99	4,832	3.18	6.17
19	11,612	3.11	54	3.16	4,806	3.17	6.33
20	10,601	2.84	40	2.34	4,300	2.83	5.18
21 - 24	36,588	9.79	123	7.21	14,822	9.76	16.97
25 - 34	83,490	22.34	309	18.10	33,221	21.88	39.98
35 - 44	77,736	20.80	301	17.63	31,217	20.56	38.19
45 - 54	51,063	13.66	225	13.18	20,816	13.71	26.89
55 - 64	29,924	8.01	151	8.85	12,065	7.95	16.79
65 - 74	20,228	5.41	133	7.79	8,374	5.52	13.31
75+	15,773	4.22	224	13.12	6,827	4.50	17.62
Not Stated	3,752	1.00	19	1.11	1,356	0.89	2.01
Total	373,693	100	1,707	100	151,833	100	

* Includes bicycle drivers.

Persons in Crashes by Age and Gender

1999 Florida Traffic Crash Facts

TABLE 10 Persons Involved In Crashes By Age and Gender
Persons Killed*

Age Groups	Total Killed	Drivers			Total Passengers	Pedestrians			Bicyclists		
		Total	Male	Female		Total	Male	Female	Total	Male	Female
0 - 4	31	0	0	0	22	8	6	2	1	0	1
5 - 9	45	0	0	0	21	19	14	5	5	5	0
10 - 14	71	3	3	0	42	15	10	5	11	7	4
15	30	4	2	2	17	6	5	1	3	3	0
16	49	16	9	7	24	8	8	0	1	1	0
17	56	33	18	15	21	2	2	0	0	0	0
18	85	48	35	13	28	6	3	3	3	3	0
19	79	52	39	13	24	1	1	0	2	2	0
20	64	37	33	4	18	6	4	2	3	2	1
21 - 24	217	120	99	21	74	20	16	4	3	2	1
25 - 34	447	291	230	61	82	56	42	14	18	16	2
35 - 44	448	285	210	75	53	94	73	20	16	13	3
45 - 54	366	196	151	45	53	88	69	19	29	28	1
55 - 64	253	147	111	36	46	56	40	16	4	3	1
65 - 74	246	125	88	37	70	43	31	12	8	7	1
75+	382	219	151	68	103	55	29	26	5	5	0
Not Stated	51	14	11	1	14	18	11	7	5	3	1
Total	2,920	1,590	1,190	398	712	501	364	136	117	100	16

TABLE 11 Persons Injured*

Age Groups	Total Injured	Drivers			Total Passengers	Pedestrians			Bicyclists		
		Total	Male	Female		Total	Male	Female	Total	Male	Female
0 - 4	3,908	6	3	3	3,608	264	164	100	30	23	7
5 - 9	7,011	23	15	8	6,002	605	400	205	381	293	88
10 - 14	8,670	307	199	108	6,793	759	464	295	811	618	193
15	3,024	302	177	125	2,401	173	107	66	148	127	21
16	5,888	2,832	1,387	1,445	2,769	154	92	62	133	114	19
17	7,186	4,116	2,096	2,020	2,836	126	70	56	108	89	19
18	7,580	4,728	2,442	2,286	2,620	128	76	52	104	80	24
19	7,093	4,712	2,555	2,157	2,177	110	73	37	94	70	24
20	6,340	4,208	2,175	2,033	1,906	134	94	40	92	70	22
21 - 24	21,083	14,576	7,629	6,947	5,852	409	252	156	246	187	59
25 - 34	43,725	32,609	17,084	15,524	9,511	993	630	363	612	485	127
35 - 44	40,109	30,486	15,774	14,711	7,753	1,139	745	394	731	576	155
45 - 54	27,237	20,360	10,627	9,733	5,635	786	499	285	456	384	72
55 - 64	16,370	11,793	6,368	5,425	3,792	513	291	220	272	229	43
65 - 74	12,339	8,208	4,604	3,604	3,519	446	242	204	166	134	32
75+	10,366	6,727	3,745	2,982	3,042	497	221	276	100	83	17
Not Stated	4,296	1,074	655	374	2,640	300	201	96	282	213	68
Total	232,225	147,067	77,535	69,485	72,856	7,536	4,621	2,907	4,766	3,775	990

*Persons whose gender was not stated are included in the total columns for both tables. Passengers' gender is not reported.

Motorcyclists And Bicyclists Crash Trends

1999 Florida Traffic Crash Facts

Chart 1

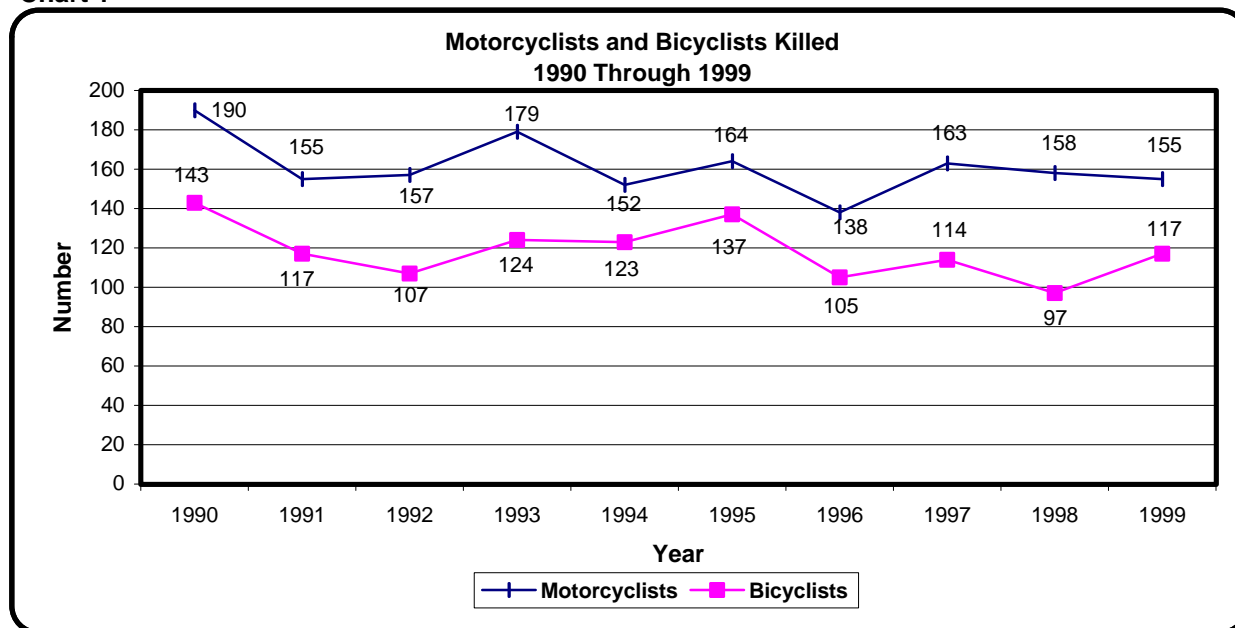
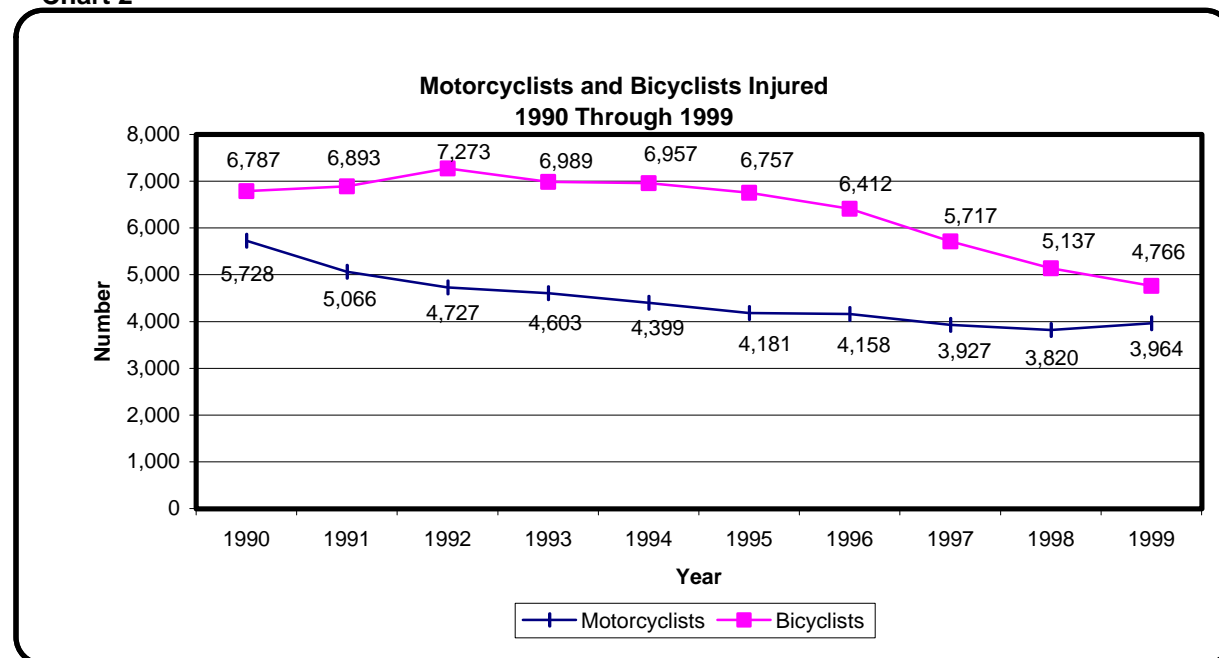


Chart 2



Pedestrian Fatality Trend

1999 Florida Traffic Crash Facts

Chart 3

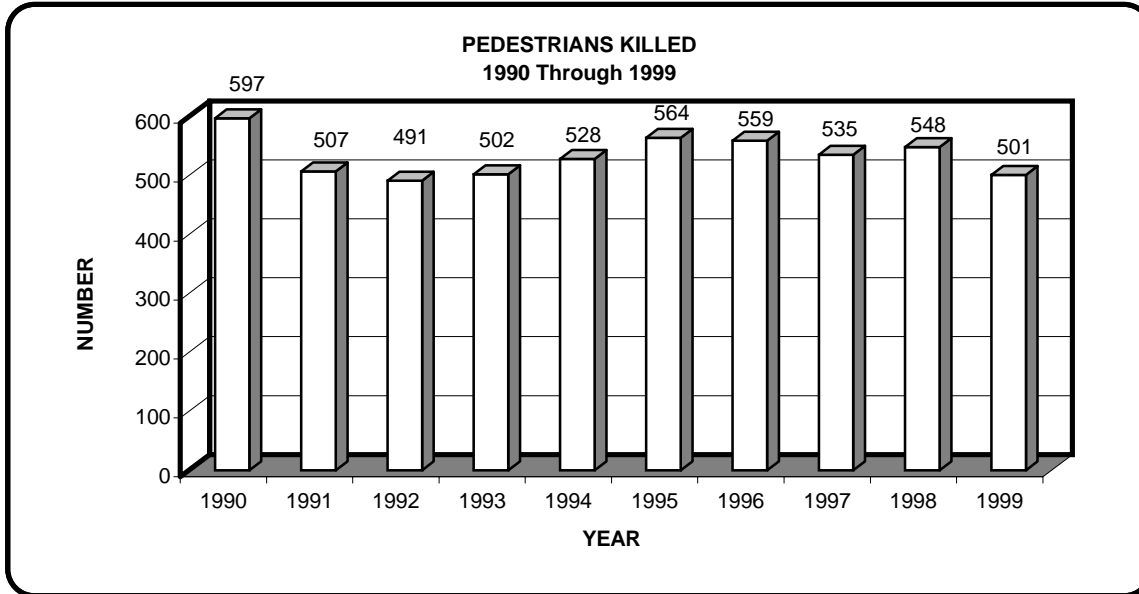
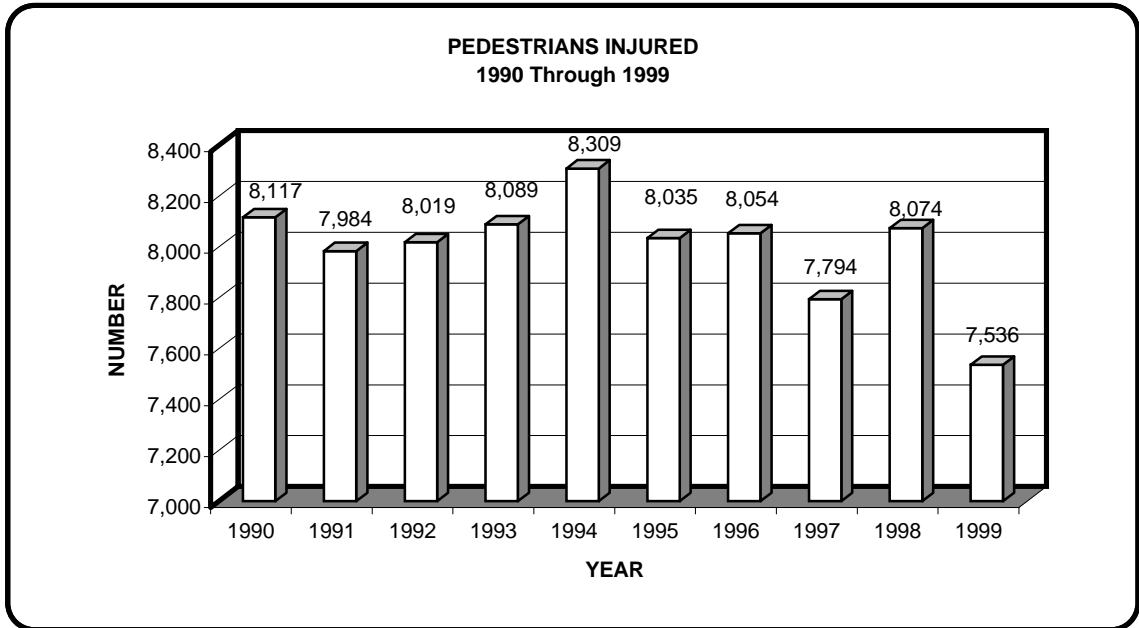


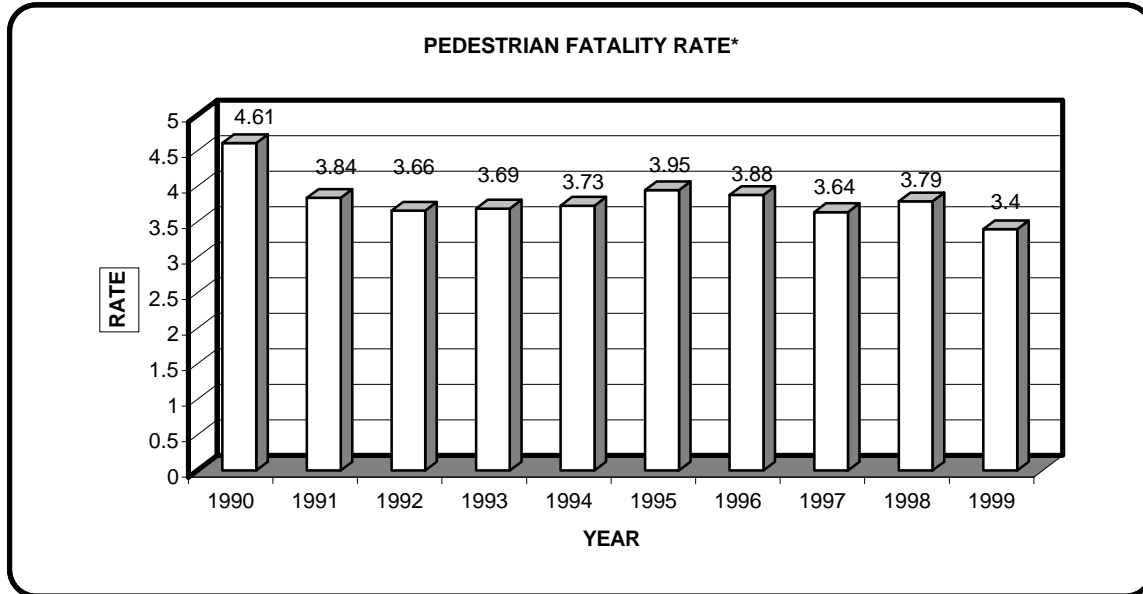
Chart 4



Pedestrian Fatality Trend

1999 Florida Traffic Crash Facts

Chart 5



*Florida pedestrian fatality rate per 100,000 residents.

Pedestrian Behavior*

1999 Florida Traffic
Crash Facts

TABLE 12 Pedestrian Killed in Crashes By Age and Type of Actions

Age Group	Pedestrian Actions												% Total	Total Killed
	Cross Not at Inter-section	%	Cross at Inter-section	%	Walk Along Rd. With Traffic	%	Walk Along Rd. Against Traffic	%	Standing or Playing in Road	%	Other	%		
0 - 4	2	25.00	2	25.00	0	0.00	0	0.00	1	12.50	3	37.50	100	8
5 - 9	10	52.63	3	15.79	0	0.00	0	0.00	3	15.79	3	15.79	100	19
10 - 14	11	73.33	1	6.67	1	6.67	0	0.00	0	0.00	2	13.33	100	15
15 - 19	9	39.13	1	4.35	1	4.35	1	4.35	3	13.04	8	34.78	100	23
20 - 24	7	26.92	3	11.54	4	15.38	0	0.00	3	11.54	9	34.62	100	26
25 - 34	23	41.07	3	5.36	6	10.71	2	3.57	5	8.93	17	30.36	100	56
35 - 44	44	46.81	8	8.51	6	6.38	1	1.06	9	9.57	26	27.66	100	94
45 - 54	45	51.14	8	9.09	4	4.55	1	1.14	10	11.36	20	22.73	100	88
55 - 64	31	55.36	8	14.29	5	8.93	1	1.79	1	1.79	10	17.86	100	56
65+	56	57.14	9	9.18	3	3.06	3	3.06	1	1.02	26	26.53	100	98
Not Stated	11	61.11	2	11.11	1	5.56	0	0.00	0	0.00	4	22.22	100	18
Total	249		48		31		9		36		128			501

TABLE 13 Pedestrians Injured in Crashes By Age and Type of Actions

Age Group	Pedestrian Actions												% Total	Total Injured
	Cross Not at Inter-section	%	Cross at Inter-section	%	Walk Along Rd. With Traffic	%	Walk Along Rd. Against Traffic	%	Standing or Playing in Road	%	Other	%		
0 - 4	109	41.29	22	8.33	3	1.14	2	0.76	35	13.26	93	35.23	100	264
5 - 9	268	44.30	64	10.58	7	1.16	2	0.33	53	8.76	211	34.88	100	605
10 - 14	331	43.61	121	15.94	32	4.22	17	2.24	55	7.25	203	26.75	100	759
15 - 19	217	31.40	87	12.59	58	8.39	29	4.20	41	5.93	259	37.48	100	691
20 - 24	155	28.55	73	13.44	43	7.92	20	3.68	26	4.79	226	41.62	100	543
25 - 34	300	30.21	127	12.79	61	6.14	33	3.32	45	4.53	426	42.90	100	993
35 - 44	392	34.42	154	13.52	61	5.36	28	2.46	56	4.92	448	39.33	100	1,139
45 - 54	269	34.22	127	16.16	34	4.33	20	2.54	30	3.82	306	38.93	100	786
55 - 64	166	32.36	89	17.35	17	3.31	10	1.95	21	4.09	210	40.94	100	513
65+	291	30.86	182	19.30	35	3.71	24	2.55	23	2.44	388	41.15	100	943
Not Stated	112	37.33	28	9.33	12	4.00	6	2.00	25	8.33	117	39.00	100	300
Total	2,610		1,074		363		191		410		2,887			7,536

*Pedestrians whose actions were not stated are included in the total columns for both tables.

Pedestrian Behavior

1999 Florida Traffic
Crash Facts

TABLE 14 Pedestrians in Crashes By Age
and Percent Drinking

Age Group	Number Pedestrians	Number Drinking	Percent Drinking
0 - 4	287	0	0.00
5 - 9	644	4	0.62
10 - 14	819	8	0.98
15 - 19	755	43	5.70
20 - 24	620	79	12.74
25 - 29	531	76	14.31
30 - 34	593	108	18.21
35 - 39	673	144	21.40
40 - 44	649	126	19.41
45 - 49	523	99	18.93
50 - 54	402	79	19.65
55 - 59	327	44	13.46
60 - 64	269	28	10.41
65 - 69	228	13	5.70
70 - 74	276	14	5.07
75 - 79	247	6	2.43
80 - 84	172	5	2.91
85 - 89	111	1	0.90
90 - 94	32	1	3.13
95 - 99	4	0	0.00
Unknown	395	47	11.90
Total	8,557	925	10.81

TABLE 15 Pedestrians in Crashes By Injury
Severity and Percent Drinking

Injury Severity	Number Pedestrians	Number Drinking	Percent Drinking
Unknown	116	5	4.31
No Injury	393	60	15.27
Possible Injury	2,294	129	5.62
Non-Incapacitating Injury	3,249	275	8.46
Incapacitating Injury	1,993	294	14.75
Fatal Injury	501	160	31.94
Non-Traffic Fatality	11	2	18.18
Total	8,557	925	10.81

Truck Passengers

1999 Florida Traffic
Crash Facts

**Passengers Riding in Beds of Light (pickup) Trucks
By Numbers Killed or Injured**

Table 16

Killed/ Injured	0-4	5-9	10- 14	15- 19	20- 24	25- 29	30- 34	35- 39	40- 44	45- 49	50- 54	55- 59	60- 64	65- 69	70- 74	75 and Over	Not Stated	Total
Killed	0	0	4	2	0	1	0	0	0	1	0	0	0	0	0	0	0	8
%	0	0	6.45	1.98	0	4.35	0	0	0	14.3	0	0	0	0	0	0	0	2.52
Injured	4	24	58	99	25	22	20	13	7	6	4	4	2	1	1	1	18	309
%	100	100	93.5	98	100	95.7	100	100	100	85.7	100	100	100	100	100	100	100	97.48
% Total	100	100	100	100	100	100	100	100	100	100	100	100	100	100	100	100	100	100
Total	4	24	62	101	25	23	20	13	7	7	4	4	2	1	1	1	18	317

**Passengers Riding in Beds of All Types of Trucks
By Numbers Killed or Injured**

Table 16A

Killed/ Injured	0-4	5-9	10- 14	15- 19	20- 24	25- 29	30- 34	35- 39	40- 44	45- 49	50- 54	55- 59	60- 64	65- 69	70- 74	75 and Over	Not Stated	Total
Killed	0	0	4	2	0	2	0	0	0	1	1	0	0	0	0	0	1	11
%	0	0	6.35	1.9	0	7.41	0	0	0	9.09	20	0	0	0	0	0	3.8	2.98
Injured	4	29	59	103	34	25	26	21	9	10	4	4	2	1	1	1	25	358
%	100	100	93.7	98.1	100	92.6	100	100	100	90.9	80	100	100	100	100	100	96.2	97.02
% Total	100	100	100	100	100	100	100	100	100	100	100	100	100	100	100	100	100	100
Total	4	29	63	105	34	27	26	21	9	11	5	4	2	1	1	1	26	369

Florida Motoring Environment

1999 Florida Traffic
Crash Facts

TABLE 17 MOTORING ENVIRONMENT

YEAR	LICENSED DRIVERS	REGISTERED VEHICLES ++	VEHICLE MILES*	CRASHES	NON-FATAL INJURIES	DEATHS	MILEAGE DEATH RATE**
1980	7,809,423	7,797,375	75,281	357,720	201,385	2,879	3.8
1981	8,222,403	7,887,881	76,146	368,766	205,437	3,119	4.1
1982	8,598,019	8,622,549	79,497	361,312	195,834	2,710	3.4
1983	8,987,493	9,064,490	81,775	384,614	194,791	2,729	3.3
1984	9,442,763	9,444,964	85,241	237,511	202,889	2,856	3.4
1985	9,630,975	10,827,693	88,057	250,412	216,596	2,870	3.3
1986	9,924,110	11,651,253	87,325	242,381	219,352	2,874	3.3
1987	10,241,063	11,738,273	92,865	240,429	215,886	2,891	3.1
1988	10,648,019	11,997,948	105,030	256,543	230,738	3,152	3
1989	11,109,288	12,276,272	108,876	252,439	230,060	3,033	2.8
1990	11,612,402	12,465,790	109,997	216,245	214,208	2,951	2.7
1991	12,170,821	11,184,146+	113,484	195,312	195,122	2,523	2.2
1992	11,550,126	11,205,298	114,000	196,176	205,432	2,480	2.2
1993	11,767,409	11,159,938	119,768	199,039	212,497	2,719	2.3
1994	11,992,578	11,393,982	120,929	206,183	223,458	2,722	2.3
1995	12,019,156	11,557,811	127,800	228,589	233,900	2,847	2.2
1996	12,343,598	12,003,930	129,637	241,377	243,320	2,806	2.2
1997	12,691,835	12,170,375	133,276	240,639	240,001	2,811	2.1
1998	13,012,132	11,277,808	136,680	245,440	241,863	2,889	2.1
1999	13,398,895	11,611,993	139,329	243,409	232,225	2,920	2.1

* IN MILLIONS (figure for 1999 is an estimate)

** PER 100 MILLION VEHICLE MILES OF TRAVEL

+ DECREASE REFLECTS CHANGE IN ACCOUNTING METHOD

++ DOES NOT INCLUDE COUNT OF TRAILERS WITH TAGS FOR 1998 AND 1999

Holiday Traffic Fatalities**1999 Florida Traffic
Crash Facts****TABLE 18**

HOLIDAY PERIOD		1996	1997	1998	1999
New Year	Hours	96	48	48	96
	Fatalities	46	18	16	31
	Rate*	0.48	0.38	0.33	0.32
	Alcohol Related Fatalities	16	11	11	13
Memorial Day	Hours	96	96	96	96
	Fatalities	30	35	37	25
	Rate*	0.31	0.36	0.39	0.26
	Alcohol Related Fatalities	10	17	17	11
Independence Day	Hours	120	96	72	96
	Fatalities	41	27	19	31
	Rate*	0.34	0.28	0.26	0.32
	Alcohol Related Fatalities	11	10	6	11
Labor Day	Hours	96	96	96	96
	Fatalities	22	26	37	26
	Rate*	0.23	0.27	0.39	0.27
	Alcohol Related Fatalities	11	9	12	10
Thanksgiving	Hours	120	120	120	120
	Fatalities	42	45	36	41
	Rate*	0.35	0.38	0.3	0.34
	Alcohol Related Fatalities	16	15	16	11
Christmas	Hours	48	48	96	72
	Fatalities	20	22	40	28
	Rate*	0.42	0.46	0.42	0.39
	Alcohol Related Fatalities	5	11	19	12
All Days in Year	Hours	8,784	8,760	8,760	8,760
	Fatalities	2,806	2,811	2,889	2,920
	Rate*	0.32	0.32	0.33	0.33
	Alcohol Related Fatalities	944	926	862	936

*FATALITIES PER HOUR

Traffic Crash by Month

1999 Florida Traffic Crash Facts

CHART 6

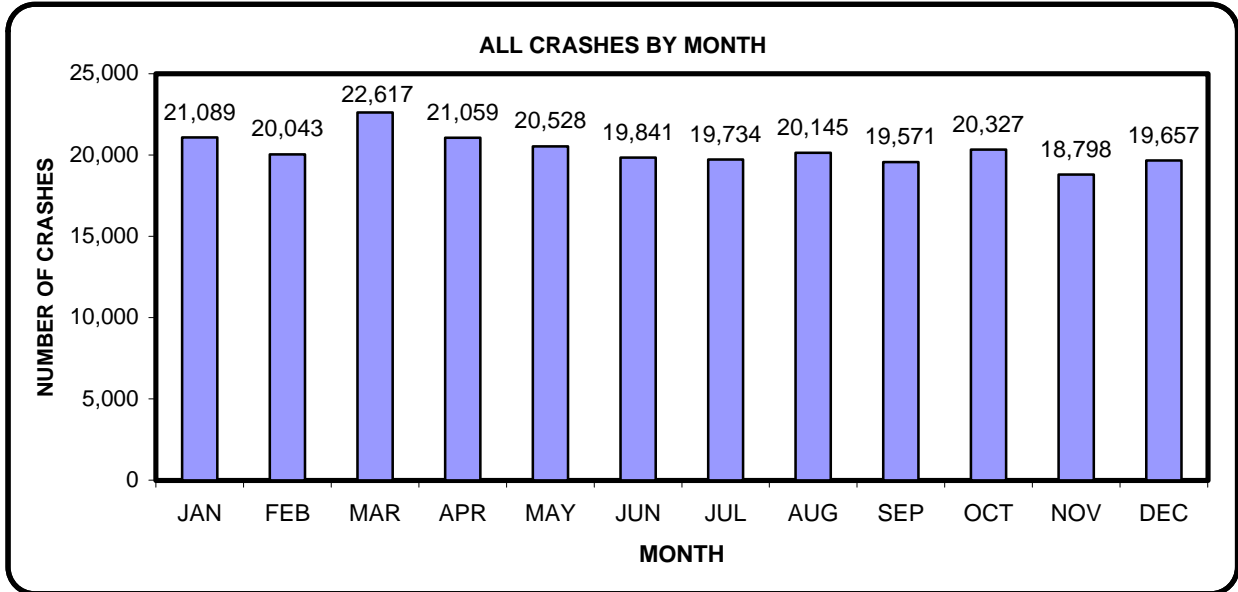
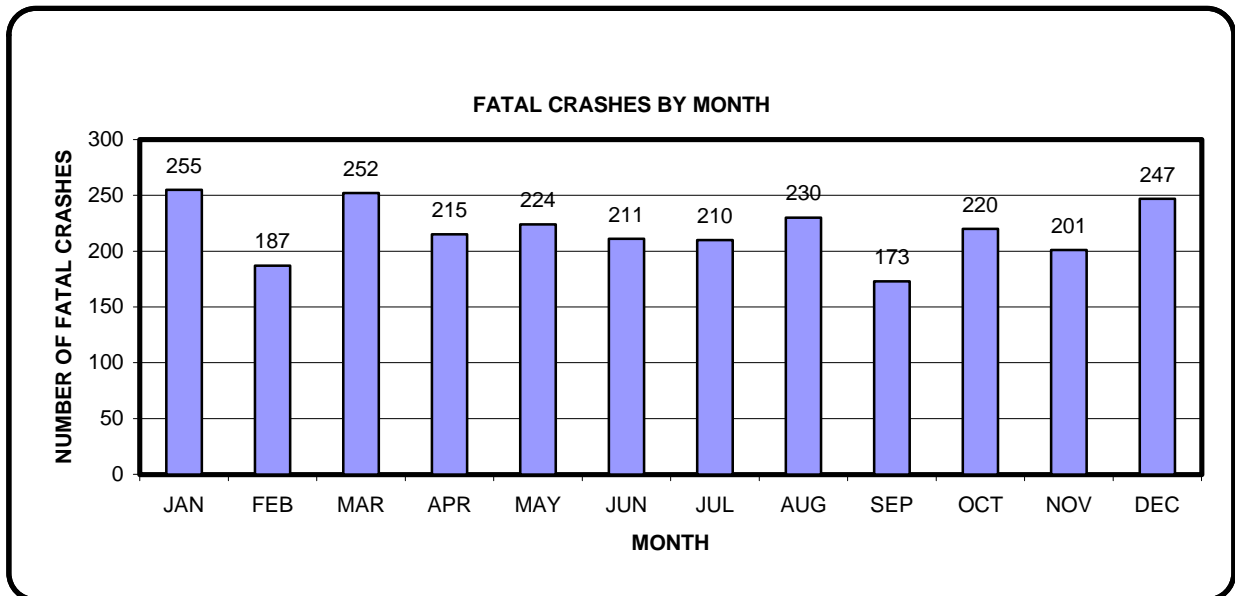


CHART 7



Traffic Crashes by Day of Week/Time of Day

1999 Florida Traffic Crash Facts

TABLE 19
Motor Vehicle Crashes by Day of Week and Time of Day

Time of Crash Hour Beginning	Total		Monday		Tuesday		Wednesday		Thursday		Friday		Saturday		Sunday		
	All	Fatal	All	Fatal	All	Fatal	All	Fatal	All	Fatal	All	Fatal	All	Fatal	All	Fatal	
Before noon	Midnight	5,416	108	580	11	498	14	480	8	614	15	726	12	1,245	28	1,273	20
	1:00	4,500	81	430	6	347	5	378	10	445	2	576	8	1,154	29	1,170	21
	2:00	4,648	108	446	3	352	6	410	12	438	12	618	17	1,253	27	1,131	31
	3:00	3,427	79	330	4	258	8	244	10	316	6	437	8	903	24	939	19
	4:00	2,552	63	240	8	220	7	194	6	268	3	314	6	661	15	655	18
	5:00	2,689	71	351	12	294	11	260	6	321	5	399	12	567	14	497	11
	6:00	5,282	107	804	15	847	15	800	12	929	13	851	24	575	18	476	10
	7:00	9,972	83	1,703	12	1,869	13	1,689	10	1,841	14	1,641	13	734	12	495	9
	8:00	10,333	82	1,734	12	1,829	17	1,819	11	1,739	9	1,724	13	919	14	569	6
	9:00	8,953	86	1,421	13	1,421	12	1,329	14	1,415	5	1,445	10	1,138	16	784	16
	10:00	9,671	101	1,434	18	1,448	16	1,345	11	1,408	18	1,527	15	1,524	14	985	9
11:00	11,115	72	1,609	16	1,629	10	1,493	7	1,564	13	1,830	12	1,816	7	1,174	7	
After noon	Noon	13,472	97	2,015	18	1,939	15	1,928	13	1,907	7	2,215	19	2,022	15	1,446	10
	1:00	13,725	88	2,025	12	2,004	8	1,958	13	1,920	8	2,221	13	2,078	21	1,519	13
	2:00	15,560	124	2,345	19	2,229	14	2,323	17	2,310	19	2,628	22	2,091	17	1,634	16
	3:00	17,665	113	2,693	18	2,581	14	2,614	21	2,614	20	3,191	15	2,207	15	1,765	10
	4:00	18,644	131	2,826	24	2,892	19	2,749	18	2,813	15	3,398	18	2,253	14	1,713	23
	5:00	19,298	139	2,990	17	2,966	22	3,120	14	2,958	16	3,445	25	2,083	24	1,736	21
	6:00	15,824	173	2,277	27	2,267	26	2,304	24	2,387	17	2,698	26	2,083	28	1,808	25
	7:00	11,977	144	1,522	16	1,537	9	1,641	20	1,645	21	2,081	31	1,922	27	1,629	20
	8:00	9,936	156	1,213	17	1,175	14	1,259	19	1,428	25	1,820	33	1,654	24	1,387	24
	9:00	9,460	156	1,109	21	1,183	21	1,181	16	1,305	16	1,755	25	1,665	26	1,262	31
	10:00	8,221	133	872	23	899	11	1,010	18	1,067	12	1,682	25	1,565	28	1,126	16
	11:00	6,907	114	658	12	714	6	782	21	829	15	1,568	29	1,455	17	901	14
	Not Stated	4,162	16	554	2	540	0	550	0	558	2	586	2	678	4	696	6
Total	243,409	2,625	34,181	356	33,938	313	33,860	331	35,039	308	41,376	433	36,245	478	28,770	406	

Contributing Causes**1999 Florida Traffic
Crash Facts****TABLE 20**
**Actions Attributed to Drivers Involved in Fatal, Injury
or Property Damage Only Crashes***

Type of Crashes	Driver Actions											Total
	Speed Too Fast	Failed/ Yield/ Right- of-Way	Disregard Stop Sign	Disregard Other Traffic Control	Drove Left of Center	Improper Over- taking	Follow Too Closely	Alcohol Under Influence	Careless Driving	Mech- anical Defect	Other	
Fatal	472	632	78	119	130	108	7	320	858	28	875	3,627
% of Fatal Crashes	6.61	1.54	2.23	1.34	7.92	1.62	0.10	4.10	1.20	1.42	2.22	
Injury	5,255	32,345	2,724	7,209	1,171	4,814	5,475	4,031	54,540	1,397	29,078	148,039
% of Injury Crashes	73.60	78.80	78.03	81.00	71.32	72.09	76.33	51.70	76.31	70.91	73.90	
Property Damage Only	1,413	8,068	689	1,572	341	1,756	1,691	3,446	16,070	545	9,396	44,987
% of Property Damage Only Crashes	19.79	19.66	19.74	17.66	20.77	26.30	23.57	44.20	22.49	27.66	23.88	
Total	7,140	41,045	3,491	8,900	1,642	6,678	7,173	7,797	71,468	1,970	39,349	196,653
% Total	100	100	100	100	100	100	100	100	100	100	100	

*This table lists contributing causes reported by the investigating officer for drivers in traffic crashes.

There can be up to three contributing causes per driver.

Environmental Causes

1999 Florida Traffic
Crash Facts

TABLE 21 Lighting Conditions at the Time of Crash

Lighting Conditions	All Crashes	Fatal Crashes	Injury Crashes	Property Damage Only Crashes
Daylight	160,100	1,193	100,657	58,250
Dusk	6,717	68	3,916	2,733
Dawn	2,937	63	1,804	1,070
Darkness	69,347	1,285	35,780	32,282
Unknown	4,308	16	1,015	3,277
Total	243,409	2,625	143,172	97,612

TABLE 22 Road Surface Conditions at the Time of Crash

Surface Conditions	All Crashes	Fatal Crashes	Injury Crashes	Property Damage Only Crashes
Dry	204,937	2,324	120,461	82,152
Wet	33,951	275	20,834	12,842
Slippery	1,872	12	1,207	653
Icy	82	2	40	40
Other	2,567	12	630	1,925
Total	243,409	2,625	143,172	97,612

TABLE 23 Type of Vehicle Collision*

Type of Collision	All Crashes	Fatal Crashes	Injury Crashes	Property Damage Only Crashes
Head On	4,268	168	2,966	1,134
Rear End	67,699	191	47,275	20,233
Angle	46,256	510	31,006	14,740
Sideswipe	15,302	59	5,352	9,891
Backed Into	6,461	0	1,210	5,251
Left/Right Turn	26,653	245	18,412	7,996
Other	18,408	129	5,002	13,277
Total	185,047	1,302	111,223	72,522

*Type of collision applies to the first two vehicles in crashes involving two or more vehicles.

County Data

1999 Florida Traffic
Crash Facts

TABLE 24

5 YEAR CRASH HISTORY BY COUNTY

COUNTY	1995	1996	1997	1998	1999	COUNTY	1995	1996	1997	1998	1999
ALACHUA	3,414	3,671	4,074	4,281	3,874	LEVY	303	370	374	409	402
BAKER	226	255	242	192	248	LIBERTY	64	64	65	60	79
BAY	2,085	2,238	2,224	2,306	1,979	MADISON	217	221	232	266	251
BRADFORD	369	324	299	261	223	MANATEE	3,190	3,362	3,366	3,533	3,368
BREVARD	4,650	4,917	4,747	4,484	4,713	MARION	2,967	2,842	2,694	2,855	2,939
BROWARD	25,958	27,508	26,849	27,464	27,435	MARTIN	1,455	1,511	1,498	1,544	1,436
CALHOUN	102	119	123	105	110	MIAMI-DADE	43,233	48,634	47,794	49,421	49,804
CHARLOTTE	1,358	1,497	1,445	1,682	1,580	MONROE	1,123	1,185	1,250	1,275	1,363
CITRUS	1,060	1,121	1,014	994	976	NASSAU	401	443	452	480	542
CLAY	1,006	1,113	995	1,093	1,303	OKALOOSA	1,671	1,793	1,608	1,538	1,747
COLLIER	2,392	2,500	2,516	2,512	2,771	OKEECHOBEE	365	427	342	442	414
COLUMBIA	575	710	736	738	654	ORANGE	12,870	14,398	15,920	16,668	16,604
DE SOTO	315	313	301	344	304	OSCEOLA	1,865	2,027	2,116	2,353	2,272
DIXIE	145	148	161	135	126	PALM BEACH	14,929	14,756	13,921	14,466	14,387
DUVAL	13,053	13,005	13,273	13,332	13,664	PASCO	3,344	4,088	3,833	4,147	4,104
ESCAMBIA	3,985	4,195	4,330	4,097	3,820	PINELLAS	11,919	12,359	12,529	13,192	13,196
FLAGLER	360	385	382	367	382	POLK	6,735	7,357	7,394	7,697	7,220
FRANKLIN	108	126	117	126	98	PUTNAM	869	949	1,039	1,005	1,039
GADSDEN	607	727	706	671	631	ST. JOHNS	1,297	1,448	1,427	1,557	1,607
GILCHRIST	90	115	117	103	127	ST. LUCIE	2,200	2,251	2,091	2,030	2,086
GLADES	93	95	108	132	90	SANTA ROSA	1,036	1,134	1,148	1,232	1,114
GULF	88	82	182	136	143	SARASOTA	3,856	4,670	4,481	4,588	4,229
HAMILTON	126	144	202	167	114	SEMINOLE	3,326	3,616	3,458	3,655	3,284
HARDEE	266	276	218	303	256	SUMTER	394	429	461	537	561
HENDRY	330	340	346	377	364	SUWANNEE	296	380	465	460	470
HERNANDO	993	1,121	1,099	1,154	1,231	TAYLOR	271	263	277	258	242
HIGHLANDS	769	680	637	620	583	UNION	87	91	72	93	88
HILLSBOROUGH	21,071	21,445	21,335	19,286	18,091	VOLUSIA	6,016	6,171	6,403	6,307	6,468
HOLMES	151	150	123	146	133	WAKULLA	194	219	193	237	231
INDIAN RIVER	1,191	1,215	1,215	1,147	1,233	WALTON	384	478	526	504	500
JACKSON	458	535	458	516	492	WASHINGTON	182	202	201	228	196
JEFFERSON	178	175	154	175	163	UNKNOWN	144	283	454	243	127
LAFAYETTE	46	60	47	68	84	STATEWIDE	228,589	241,377	240,639	245,440	243,409
LAKE	1,677	1,828	1,835	2,093	2,239						
LEE	7,170	4,810	4,688	4,691	4,919						
LEON	4,921	5,013	5,257	5,862	5,886						

County Data

1999 Florida Traffic
Crash Facts

TABLE 25 5 YEAR ALCOHOL-RELATED CRASH HISTORY BY COUNTY

COUNTY	1995	1996	1997	1998	1999	COUNTY	1995	1996	1997	1998	1999
ALACHUA	342	368	406	393	385	LEVY	55	68	58	63	77
BAKER	45	44	36	39	47	LIBERTY	19	15	18	13	17
BAY	404	382	403	367	368	MADISON	31	15	23	21	32
BRADFORD	68	52	44	48	42	MANATEE	469	487	513	480	490
BREVARD	776	803	683	660	735	MARION	346	319	293	265	304
BROWARD	2,291	2,243	2,161	2,021	1,984	MARTIN	268	237	246	224	238
CALHOUN	22	29	31	24	30	MIAMI-DADE	2,577	2,661	2,429	2,193	2,036
CHARLOTTE	165	183	162	191	166	MONROE	232	224	233	244	211
CITRUS	186	166	167	159	120	NASSAU	82	85	68	71	66
CLAY	170	169	150	162	156	OKALOOSA	328	380	300	283	298
COLLIER	371	374	384	384	395	OKEECHOBEE	80	71	60	81	59
COLUMBIA	111	127	114	106	91	ORANGE	1,402	1,421	1,462	1,407	1,366
DE SOTO	60	64	56	46	34	OSCEOLA	235	241	250	222	222
DIXIE	29	28	28	39	32	PALM BEACH	1,575	1,557	1,365	1,315	1,298
DUVAL	1,231	1,291	1,208	1,155	1,101	PASCO	417	493	515	430	446
ESCAMBIA	669	664	606	574	527	PINELLAS	1,504	1,420	1,545	1,416	1,486
FLAGLER	65	60	53	51	46	POLK	721	800	824	855	707
FRANKLIN	27	35	30	25	18	PUTNAM	177	152	175	149	149
GADSDEN	117	121	108	112	100	ST. JOHNS	218	229	213	223	217
GILCHRIST	20	21	18	19	22	ST. LUCIE	282	293	245	219	242
GLADES	23	19	23	17	13	SANTA ROSA	182	202	165	171	138
GULF	25	18	33	26	23	SARASOTA	551	587	569	545	511
HAMILTON	28	18	28	28	19	SEMINOLE	357	394	402	385	348
HARDEE	34	33	24	39	26	SUMTER	50	64	67	71	78
HENDRY	68	65	59	62	56	SUWANNEE	56	66	47	65	56
HERNANDO	143	174	146	174	168	TAYLOR	59	51	45	28	37
HIGHLANDS	102	90	95	73	59	UNION	17	15	12	15	12
HILLSBOROUGH	2,070	2,068	2,071	1,746	1,705	VOLUSIA	770	772	788	664	743
HOLMES	25	22	25	29	24	WAKULLA	55	57	40	43	57
INDIAN RIVER	165	153	167	127	138	WALTON	81	108	148	128	98
JACKSON	74	84	66	66	58	WASHINGTON	23	23	34	41	39
JEFFERSON	29	34	17	19	14	UNKNOWN	15	28	47	20	7
LAFAYETTE	12	12	7	17	17						
LAKE	249	231	221	269	245						
LEE	926	649	633	614	685	STATEWIDE	24,873	24,875	24,119	22,741	22,252
LEON	497	446	457	510	518						

County Data

1999 Florida Traffic
Crash Facts

TABLE 26

5 YEAR FATALITY HISTORY BY COUNTY

COUNTY	1995	1996	1997	1998	1999	COUNTY	1995	1996	1997	1998	1999
ALACHUA	31	45	43	52	48	LEVY	5	9	8	10	16
BAKER	5	8	11	6	10	LIBERTY	1	1	2	1	1
BAY	33	32	34	34	28	MADISON	17	5	8	12	10
BRADFORD	7	4	6	16	3	MANATEE	51	55	64	65	58
BREVARD	87	74	84	69	81	MARION	79	49	76	59	74
BROWARD	210	210	227	231	214	MARTIN	26	20	28	17	26
CALHOUN	3	9	2	5	1	MIAMI-DADE	333	326	309	300	316
CHARLOTTE	23	26	26	18	31	MONROE	22	21	17	27	25
CITRUS	35	22	23	36	26	NASSAU	18	13	17	28	18
CLAY	20	20	13	23	16	OKALOOSA	28	29	17	25	16
COLLIER	49	44	55	52	60	OKEECHOBEE	6	12	22	15	7
COLUMBIA	14	27	26	18	18	ORANGE	144	140	126	180	153
DE SOTO	12	9	7	4	14	OSCEOLA	40	43	49	55	50
DIXIE	2	5	9	6	3	PALM BEACH	200	199	180	177	189
DUVAL	117	122	113	101	116	PASCO	67	60	63	71	79
ESCAMBIA	47	40	47	54	38	PINELLAS	122	128	128	124	116
FLAGLER	11	10	13	17	16	POLK	129	103	102	108	123
FRANKLIN	2	1	5	3	1	PUTNAM	21	17	29	21	19
GADSDEN	14	17	22	18	21	ST. JOHNS	20	22	23	30	45
GILCHRIST	3	3	3	4	6	ST. LUCIE	40	43	29	22	31
GLADES	6	14	7	8	8	SANTA ROSA	27	18	26	16	15
GULF	2	3	4	4	1	SARASOTA	46	49	42	51	35
HAMILTON	8	5	11	3	2	SEMINOLE	40	30	41	39	40
HARDEE	8	11	2	10	14	SUMTER	8	24	12	20	33
HENDRY	18	15	15	15	14	SUWANNEE	15	15	13	9	14
HERNANDO	17	39	23	21	25	TAYLOR	9	4	7	9	15
HIGHLANDS	30	20	23	28	30	UNION	1	1	1	2	3
HILLSBOROUGH	203	188	190	208	197	VOLUSIA	80	112	86	86	86
HOLMES	8	5	7	8	7	WAKULLA	7	6	8	8	6
INDIAN RIVER	25	24	25	25	22	WALTON	14	8	21	16	16
JACKSON	12	17	14	25	25	WASHINGTON	9	7	5	10	12
JEFFERSON	6	14	1	7	12	UNKNOWN	0	1	5	0	1
LAFAYETTE	0	5	0	2	2	STATEWIDE	2,847	2,806	2,811	2,889	2,920
LAKE	44	39	37	50	47						
LEE	70	78	89	76	99						
LEON	40	31	30	19	16						

County Data

1999 Florida Traffic
Crash Facts

TABLE 27 5 YEAR ALCOHOL-RELATED FATALITY HISTORY BY COUNTY

COUNTY	1995	1996	1997	1998	1999	COUNTY	1995	1996	1997	1998	1999
ALACHUA	15	16	20	22	12	LEVY	4	4	4	5	10
BAKER	5	0	5	2	6	LIBERTY	1	1	2	0	0
BAY	20	12	11	14	12	MADISON	4	0	1	2	3
BRADFORD	3	3	2	11	0	MANATEE	15	21	32	17	23
BREVARD	36	34	30	25	34	MARION	35	19	32	19	28
BROWARD	55	54	62	44	62	MARTIN	12	3	5	5	6
CALHOUN	3	7	0	3	0	MIAMI-DADE	82	56	59	60	59
CHARLOTTE	8	8	5	2	11	MONROE	13	9	12	5	12
CITRUS	10	8	14	10	5	NASSAU	8	7	8	6	8
CLAY	11	8	4	11	6	OKALOOSA	12	14	5	9	9
COLLIER	16	24	16	12	13	OKEECHOBEE	5	5	12	8	4
COLUMBIA	3	14	11	6	5	ORANGE	55	57	43	67	49
DE SOTO	4	7	3	0	3	OSCEOLA	25	16	15	18	10
DIXIE	1	3	4	3	1	PALM BEACH	66	48	56	57	54
DUVAL	34	40	23	33	37	PASCO	29	23	30	24	36
ESCAMBIA	22	14	22	19	18	PINELLAS	41	31	39	34	40
FLAGLER	3	4	5	7	4	POLK	53	39	39	27	28
FRANKLIN	2	1	3	0	1	PUTNAM	13	7	17	6	8
GADSDEN	11	11	8	7	12	ST. JOHNS	9	8	10	11	13
GILCHRIST	1	1	1	2	2	ST. LUCIE	17	19	9	11	6
GLADES	5	6	4	4	5	SANTA ROSA	15	6	16	8	11
GULF	1	2	1	1	1	SARASOTA	21	19	12	12	12
HAMILTON	5	0	3	2	2	SEMINOLE	18	10	10	13	13
HARDEE	4	3	0	1	2	SUMTER	3	5	4	4	11
HENDRY	8	4	8	5	9	SUWANNEE	7	6	5	1	7
HERNANDO	5	14	8	2	8	TAYLOR	7	1	6	2	8
HIGHLANDS	7	4	11	11	8	UNION	0	1	0	0	0
HILLSBOROUGH	71	64	46	63	78	VOLUSIA	35	43	34	27	34
HOLMES	2	1	1	4	0	WAKULLA	7	2	4	5	3
INDIAN RIVER	15	8	8	2	3	WALTON	4	3	9	7	8
JACKSON	7	6	6	8	6	WASHINGTON	3	4	3	5	4
JEFFERSON	1	8	0	1	5	UNKNOWN	0	0	1	0	0
LAFAYETTE	0	1	0	2	2	STATEWIDE	1,073	944	926	862	936
LAKE	11	14	18	15	12						
LEE	33	40	20	26	29						
LEON	16	13	9	7	5						

County Data

1999 Florida Traffic
Crash Facts

TABLE 28

5 YEAR INJURY HISTORY BY COUNTY

COUNTY	1995	1996	1997	1998	1999	COUNTY	1995	1996	1997	1998	1999
ALACHUA	3,303	3,304	3,495	3,675	3,355	LEVY	371	441	432	601	475
BAKER	260	296	228	248	259	LIBERTY	99	70	84	73	99
BAY	2,170	2,253	2,279	2,180	2,045	MADISON	298	267	296	253	301
BRADFORD	352	297	279	298	237	MANATEE	3,129	3,127	3,426	3,697	3,465
BREVARD	5,332	5,710	5,283	5,062	4,986	MARION	3,936	3,735	3,391	3,604	3,543
BROWARD	25,308	26,720	26,359	26,474	25,936	MARTIN	1,533	1,468	1,576	1,456	1,510
CALHOUN	127	173	162	114	141	MIAMI-DADE	40,357	43,285	42,865	42,526	40,641
CHARLOTTE	1,427	1,675	1,499	1,627	1,516	MONROE	1,191	1,290	1,270	1,268	1,220
CITRUS	1,388	1,460	1,271	1,025	1,124	NASSAU	472	471	493	520	601
CLAY	1,110	1,222	1,089	1,195	1,239	OKALOOSA	2,002	2,092	1,867	1,565	1,760
COLLIER	2,435	2,511	2,555	2,441	2,638	OKEECHOBEE	425	463	356	417	452
COLUMBIA	737	968	944	887	797	ORANGE	15,047	15,739	17,126	17,675	16,974
DE SOTO	379	435	358	425	417	OSCEOLA	2,302	2,382	2,661	2,867	2,693
DIXIE	203	181	193	151	139	PALM BEACH	15,411	15,150	14,155	15,143	14,741
DUVAL	11,810	11,676	11,953	11,600	11,020	PASCO	4,178	5,116	4,947	5,083	4,736
ESCAMBIA	4,486	4,721	4,701	4,462	4,227	PINELLAS	13,074	13,980	13,995	14,119	13,243
FLAGLER	461	488	455	427	426	POLK	7,176	7,924	7,563	7,807	7,379
FRANKLIN	126	130	144	141	98	PUTNAM	907	974	990	976	936
GADSDEN	716	698	693	759	716	ST. JOHNS	1,421	1,542	1,474	1,576	1,624
GILCHRIST	111	142	123	113	142	ST. LUCIE	2,553	2,454	2,281	2,177	2,176
GLADES	114	126	110	168	98	SANTA ROSA	1,369	1,473	1,468	1,549	1,468
GULF	99	104	189	142	157	SARASOTA	3,626	4,550	3,867	4,429	4,180
HAMILTON	149	213	254	166	175	SEMINOLE	3,361	3,701	3,393	3,497	2,874
HARDEE	347	306	220	358	307	SUMTER	526	567	614	683	698
HENDRY	474	349	384	440	427	SUWANNEE	360	475	516	447	445
HERNANDO	1,352	1,436	1,405	1,525	1,526	TAYLOR	307	247	253	240	244
HIGHLANDS	1,011	947	828	808	725	UNION	105	120	95	126	108
HILLSBOROUGH	19,981	20,630	20,424	19,538	17,864	VOLUSIA	5,962	6,048	6,070	5,869	5,784
HOLMES	222	172	147	199	161	WAKULLA	230	273	198	323	294
INDIAN RIVER	1,239	1,342	1,250	1,232	1,211	WALTON	505	630	671	669	671
JACKSON	648	756	642	709	649	WASHINGTON	288	263	255	299	254
JEFFERSON	245	204	223	227	198	UNKNOWN	116	224	389	185	99
LAFAYETTE	64	73	57	71	75	STATEWIDE	233,900	243,320	240,001	241,863	232,225
LAKE	1,865	2,107	2,071	2,150	2,230						
LEE	7,146	4,946	4,662	4,780	4,974						
LEON	4,066	4,008	4,035	4,327	4,302						

County Data

1999 Florida Traffic
Crash Facts

TABLE 29

5 YEAR ALCOHOL-RELATED INJURY HISTORY BY COUNTY

COUNTY	1995	1996	1997	1998	1999	COUNTY	1995	1996	1997	1998	1999
ALACHUA	337	310	328	295	297	LEVY	62	79	69	68	77
BAKER	56	41	34	40	48	LIBERTY	18	15	15	12	13
BAY	355	351	374	309	310	MADISON	48	16	25	16	33
BRADFORD	59	48	49	60	52	MANATEE	379	384	441	416	446
BREVARD	701	781	601	584	586	MARION	375	340	306	253	291
BROWARD	2,035	1,940	1,865	1,723	1,640	MARTIN	208	159	203	176	190
CALHOUN	22	42	36	22	36	MIAMI-DADE	2,274	2,346	2,158	1,913	1,727
CHARLOTTE	122	186	150	168	145	MONROE	198	209	202	174	170
CITRUS	206	169	170	144	109	NASSAU	94	79	55	60	56
CLAY	159	175	137	171	116	OKALOOSA	303	332	280	208	206
COLLIER	347	344	357	285	290	OKEECHOBEE	69	70	56	76	66
COLUMBIA	119	146	100	89	94	ORANGE	1,232	1,321	1,370	1,314	1,183
DE SOTO	63	61	49	52	31	OSCEOLA	196	238	237	221	245
DIXIE	34	28	30	45	25	PALM BEACH	1,462	1,434	1,214	1,197	1,117
DUVAL	1,033	1,034	989	862	825	PASCO	411	510	549	451	407
ESCAMBIA	562	613	536	497	429	PINELLAS	1,351	1,300	1,411	1,226	1,302
FLAGLER	83	70	47	56	46	POLK	684	812	730	793	684
FRANKLIN	30	28	42	27	21	PUTNAM	179	151	154	147	142
GADSDEN	136	113	91	137	113	ST. JOHNS	188	217	199	200	215
GILCHRIST	23	23	14	18	20	ST. LUCIE	263	252	257	199	219
GLADES	25	30	14	18	7	SANTA ROSA	177	205	182	158	141
GULF	24	21	35	20	27	SARASOTA	405	473	473	422	428
HAMILTON	17	18	30	33	22	SEMINOLE	289	326	333	311	238
HARDEE	29	31	12	25	20	SUMTER	43	75	60	71	82
HENDRY	62	46	65	79	69	SUWANNEE	55	81	46	56	67
HERNANDO	121	172	135	190	159	TAYLOR	56	51	57	21	33
HIGHLANDS	105	84	110	65	51	UNION	11	11	21	17	13
HILLSBOROUGH	1,894	1,905	1,839	1,624	1,533	VOLUSIA	707	745	713	577	592
HOLMES	37	18	24	43	20	WAKULLA	45	68	46	56	61
INDIAN RIVER	131	123	164	127	112	WALTON	64	102	154	123	92
JACKSON	75	83	81	82	70	WASHINGTON	26	23	33	48	39
JEFFERSON	40	32	22	18	16	UNKNOWN	10	16	30	15	1
LAFAYETTE	20	12	10	24	9						
LAKE	218	221	187	226	208						
LEE	799	603	588	534	572	STATEWIDE	22,409	22,744	21,772	20,066	19,073
LEON	448	402	378	379	369						

County Data

1999 Florida Traffic
Crash Facts

TABLE 30 5 YEAR PROPERTY DAMAGE ONLY CRASH HISTORY BY COUNTY

COUNTY	1995	1996	1997	1998	1999	COUNTY	1995	1996	1997	1998	1999
ALACHUA	1,248	1,425	1,725	1,846	1,675	LEVY	74	118	128	99	121
BAKER	60	78	91	50	81	LIBERTY	18	18	18	14	15
BAY	691	821	841	971	725	MADISON	37	56	58	85	69
BRADFORD	152	129	123	79	77	MANATEE	1,171	1,338	1,177	1,194	1,249
BREVARD	1,368	1,411	1,445	1,363	1,589	MARION	626	651	655	750	841
BROWARD	9,860	10,497	9,889	10,487	10,869	MARTIN	493	543	536	615	516
CALHOUN	19	23	21	17	21	MIAMI-DADE	18,452	22,196	21,547	23,392	24,774
CHARLOTTE	494	547	562	685	633	MONROE	333	362	380	423	478
CITRUS	249	317	270	341	314	NASSAU	111	146	140	147	183
CLAY	324	356	346	402	537	OKALOOSA	450	485	433	514	610
COLLIER	876	942	928	902	1,131	OKEECHOBEE	102	143	113	177	135
COLUMBIA	117	132	151	178	172	ORANGE	3,626	4,444	5,127	5,457	5,705
DE SOTO	66	73	87	93	83	OSCEOLA	564	614	585	670	717
DIXIE	28	41	46	51	42	PALM BEACH	5,107	5,088	4,709	4,785	5,052
DUVAL	5,377	5,248	5,511	5,617	6,374	PASCO	815	1,039	935	1,110	1,252
ESCAMBIA	1,172	1,247	1,408	1,287	1,228	PINELLAS	3,588	3,656	3,943	4,503	4,935
FLAGLER	88	85	90	91	99	POLK	2,352	2,633	2,727	2,875	2,755
FRANKLIN	31	44	29	43	35	PUTNAM	296	338	382	391	459
GADSDEN	203	293	260	206	224	ST. JOHNS	401	517	525	565	595
GILCHRIST	14	27	34	31	46	ST. LUCIE	685	778	720	710	776
GLADES	23	19	36	33	27	SANTA ROSA	260	289	302	342	242
GULF	25	17	59	45	45	SARASOTA	1,450	1,770	1,817	1,759	1,551
HAMILTON	34	27	47	49	28	SEMINOLE	1,143	1,214	1,194	1,321	1,308
HARDEE	78	82	75	98	81	SUMTER	101	90	111	139	160
HENDRY	73	121	107	121	112	SUWANNEE	83	106	154	174	195
HERNANDO	175	259	235	238	282	TAYLOR	99	111	122	99	86
HIGHLANDS	190	161	125	159	134	UNION	23	21	19	19	16
HILLSBOROUGH	8,362	8,357	8,441	6,947	6,859	VOLUSIA	2,089	2,175	2,372	2,457	2,655
HOLMES	23	34	30	23	19	WAKULLA	48	59	65	50	61
INDIAN RIVER	430	390	467	401	517	WALTON	89	108	122	114	124
JACKSON	103	100	99	97	108	WASHINGTON	30	52	47	44	39
JEFFERSON	28	42	27	39	31	UNKNOWN	61	130	196	121	66
LAFAYETTE	6	15	10	19	32	STATEWIDE	82,164	89,262	89,792	93,520	97,612
LAKE	495	505	569	714	796						
LEE	2,598	1,720	1,620	1,650	1,786						
LEON	2,307	2,389	2,629	3,032	3,060						

County Data

1999 Florida Traffic
Crash Facts

TABLE 31

5 YEAR BICYCLE FATALITY HISTORY BY COUNTY

COUNTY	1995	1996	1997	1998	1999	COUNTY	1995	1996	1997	1998	1999
ALACHUA	2	0	2	1	5	LEVY	0	0	0	0	0
BAKER	0	0	1	0	0	LIBERTY	0	0	0	0	0
BAY	2	1	1	1	2	MADISON	0	0	0	0	0
BRADFORD	0	0	0	0	0	MANATEE	5	2	1	4	3
BREVARD	3	3	7	1	3	MARION	3	4	0	0	3
BROWARD	15	9	10	11	14	MARTIN	3	0	1	1	3
CALHOUN	0	0	0	1	0	MIAMI-DADE	14	7	16	8	11
CHARLOTTE	2	1	2	0	1	MONROE	3	3	0	3	2
CITRUS	1	1	1	2	0	NASSAU	1	0	1	0	0
CLAY	0	2	0	0	0	OKALOOSA	0	1	0	2	2
COLLIER	4	1	3	4	4	OKEECHOBEE	0	0	0	2	1
COLUMBIA	0	0	1	0	0	ORANGE	8	5	3	6	5
DE SOTO	0	0	0	0	1	OSCEOLA	3	0	1	1	2
DIXIE	0	0	0	0	0	PALM BEACH	9	6	5	4	4
DUVAL	7	5	5	3	4	PASCO	5	2	3	2	2
ESCAMBIA	3	0	3	2	0	PINELLAS	5	9	7	7	8
FLAGLER	0	0	0	0	1	POLK	4	4	3	1	3
FRANKLIN	0	0	0	0	0	PUTNAM	2	2	0	1	0
GADSDEN	0	0	0	1	1	ST. JOHNS	0	0	0	0	2
GILCHRIST	0	0	0	0	0	ST. LUCIE	1	2	0	1	2
GLADES	0	0	0	0	0	SANTA ROSA	1	0	3	0	0
GULF	0	0	0	0	0	SARASOTA	5	3	8	4	3
HAMILTON	0	0	0	0	0	SEMINOLE	2	1	2	0	1
HARDEE	0	0	0	0	0	SUMTER	0	0	0	0	0
HENDRY	0	0	1	0	0	SUWANNEE	0	0	0	0	0
HERNANDO	1	1	3	0	2	TAYLOR	1	0	0	0	0
HIGHLANDS	2	0	1	0	1	UNION	0	0	0	0	0
HILLSBOROUGH	11	16	9	10	9	VOLUSIA	3	7	4	4	1
HOLMES	0	0	0	0	0	WAKULLA	0	1	0	0	0
INDIAN RIVER	0	0	0	1	1	WALTON	0	0	0	0	0
JACKSON	1	0	1	0	2	WASHINGTON	0	0	0	0	0
JEFFERSON	0	0	0	0	0	UNKNOWN	0	0	0	0	1
LAFAYETTE	0	0	0	0	0	STATEWIDE	137	105	114	97	117
LAKE	2	1	2	3	0						
LEE	2	4	3	5	7						
LEON	1	1	0	0	0						

County Data

1999 Florida Traffic
Crash Facts

TABLE 32

5 YEAR BICYCLE INJURY HISTORY BY COUNTY

COUNTY	1995	1996	1997	1998	1999	COUNTY	1995	1996	1997	1998	1999
ALACHUA	181	159	147	156	121	LEVY	4	3	5	3	7
BAKER	5	3	0	2	0	LIBERTY	1	1	0	1	0
BAY	53	51	41	29	38	MADISON	3	4	2	2	4
BRADFORD	8	7	4	5	1	MANATEE	118	129	127	108	112
BREVARD	178	187	171	139	134	MARION	59	44	45	38	29
BROWARD	883	850	772	685	596	MARTIN	48	67	50	49	46
CALHOUN	1	1	1	0	0	MIAMI-DADE	859	813	735	620	607
CHARLOTTE	35	32	31	31	29	MONROE	55	88	66	82	64
CITRUS	26	13	15	22	15	NASSAU	6	11	8	12	9
CLAY	29	30	27	18	32	OKALOOSA	54	58	33	28	27
COLLIER	96	103	91	85	91	OKEECHOBEE	6	7	14	2	2
COLUMBIA	9	8	11	9	3	ORANGE	415	396	360	313	301
DE SOTO	18	11	8	9	10	OSCEOLA	52	47	53	49	43
DIXIE	2	0	0	2	2	PALM BEACH	554	512	435	421	356
DUVAL	302	320	257	234	213	PASCO	95	86	83	82	84
ESCAMBIA	89	111	98	67	60	PINELLAS	642	570	539	439	418
FLAGLER	12	9	5	4	5	POLK	182	136	133	141	118
FRANKLIN	2	1	3	1	0	PUTNAM	17	16	16	12	7
GADSDEN	3	8	4	5	10	ST. JOHNS	48	34	34	45	37
GILCHRIST	2	3	0	0	2	ST. LUCIE	59	59	46	30	35
GLADES	0	1	2	0	0	SANTA ROSA	17	15	16	16	8
GULF	0	0	4	0	0	SARASOTA	189	181	168	160	120
HAMILTON	2	0	1	4	0	SEMINOLE	100	104	80	99	83
HARDEE	5	4	1	4	3	SUMTER	9	10	2	6	9
HENDRY	2	2	2	12	8	SUWANNEE	3	2	3	10	3
HERNANDO	20	20	19	25	29	TAYLOR	3	4	1	4	3
HIGHLANDS	18	10	4	7	8	UNION	1	0	0	1	2
HILLSBOROUGH	499	522	430	365	359	VOLUSIA	255	230	231	187	207
HOLMES	1	0	0	0	1	WAKULLA	4	3	0	0	0
INDIAN RIVER	42	48	33	29	31	WALTON	2	1	3	8	3
JACKSON	2	4	3	0	2	WASHINGTON	2	0	1	0	4
JEFFERSON	4	0	1	0	0	UNKNOWN	5	13	15	2	4
LAFAYETTE	0	1	0	0	1	STATEWIDE	6,757	6,412	5,717	5,137	4,766
LAKE	37	25	32	25	24						
LEE	235	152	138	134	123						
LEON	89	72	57	59	63						

County Data

1999 Florida Traffic
Crash Facts

TABLE 33 5 YEAR PEDESTRIAN FATALITY HISTORY BY COUNTY

COUNTY	1995	1996	1997	1998	1999	COUNTY	1995	1996	1997	1998	1999
ALACHUA	6	5	6	3	2	LEVY	0	1	0	0	0
BAKER	1	0	0	1	2	LIBERTY	0	0	0	0	0
BAY	7	7	14	4	6	MADISON	0	0	0	0	0
BRADFORD	2	1	3	3	0	MANATEE	5	16	6	12	8
BREVARD	19	14	10	9	9	MARION	11	5	9	8	8
BROWARD	59	44	52	57	49	MARTIN	3	5	5	2	3
CALHOUN	0	1	1	0	0	MIAMI-DADE	96	94	79	86	82
CHARLOTTE	3	1	5	1	0	MONROE	5	5	2	6	6
CITRUS	3	1	1	5	6	NASSAU	4	0	2	5	1
CLAY	1	4	0	4	2	OKALOOSA	5	9	3	2	2
COLLIER	7	5	5	5	7	OKEECHOBEE	0	2	3	2	0
COLUMBIA	3	6	3	5	2	ORANGE	31	36	38	49	38
DE SOTO	2	2	0	0	1	OSCEOLA	8	9	6	9	4
DIXIE	0	1	0	0	0	PALM BEACH	31	39	21	31	29
DUVAL	14	23	23	29	19	PASCO	13	12	15	17	18
ESCAMBIA	16	10	12	7	12	PINELLAS	38	43	42	34	36
FLAGLER	2	0	0	1	2	POLK	19	13	21	20	16
FRANKLIN	0	0	0	1	0	PUTNAM	6	5	5	0	1
GADSDEN	1	4	3	2	5	ST. JOHNS	5	4	4	5	3
GILCHRIST	0	0	0	0	0	ST. LUCIE	7	3	2	4	3
GLADES	2	1	0	0	2	SANTA ROSA	5	2	3	2	0
GULF	1	1	2	0	0	SARASOTA	10	11	6	9	8
HAMILTON	2	0	0	0	0	SEMINOLE	12	5	10	13	7
HARDEE	2	1	0	1	2	SUMTER	2	2	0	2	1
HENDRY	3	3	2	3	2	SUWANNEE	3	0	0	1	0
HERNANDO	2	6	5	2	1	TAYLOR	4	1	0	1	0
HIGHLANDS	4	1	4	5	4	UNION	0	0	0	0	0
HILLSBOROUGH	29	37	46	38	50	VOLUSIA	14	24	18	18	13
HOLMES	0	0	0	1	1	WAKULLA	1	1	0	0	0
INDIAN RIVER	4	4	4	1	2	WALTON	3	0	0	1	0
JACKSON	0	3	2	1	2	WASHINGTON	1	0	0	0	1
JEFFERSON	1	1	0	0	1	UNKNOWN	0	0	2	0	0
LAFAYETTE	0	2	0	0	0	STATEWIDE	564	559	535	548	501
LAKE	7	8	6	7	4						
LEE	13	12	18	11	18						
LEON	6	3	6	2	0						

County Data

1999 Florida Traffic
Crash Facts

TABLE 34 5 YEAR PEDESTRIAN INJURY HISTORY BY COUNTY

COUNTY	1995	1996	1997	1998	1999	COUNTY	1995	1996	1997	1998	1999
ALACHUA	94	95	87	93	97	LEVY	8	11	3	11	5
BAKER	9	7	4	4	5	LIBERTY	3	0	0	0	3
BAY	67	77	70	83	72	MADISON	5	3	4	5	5
BRADFORD	9	3	5	5	6	MANATEE	143	108	120	126	122
BREVARD	146	173	170	134	171	MARION	83	64	61	78	60
BROWARD	994	953	940	1,023	903	MARTIN	40	45	44	44	55
CALHOUN	1	2	2	1	3	MIAMI-DADE	1,806	1,781	1,690	1,678	1,588
CHARLOTTE	39	39	24	50	27	MONROE	39	43	41	35	45
CITRUS	30	20	21	21	31	NASSAU	13	10	16	13	10
CLAY	34	29	35	35	46	OKALOOSA	65	46	45	45	39
COLLIER	74	90	73	78	79	OKEECHOBEE	9	16	16	17	13
COLUMBIA	12	26	15	22	17	ORANGE	515	559	570	618	610
DE SOTO	14	13	9	9	7	OSCEOLA	68	72	66	82	68
DIXIE	4	6	1	1	2	PALM BEACH	537	616	524	604	565
DUVAL	409	398	412	395	349	PASCO	114	133	125	139	112
ESCAMBIA	132	148	139	145	124	PINELLAS	449	492	467	490	436
FLAGLER	15	12	14	15	12	POLK	198	204	227	218	201
FRANKLIN	5	1	7	4	0	PUTNAM	28	20	28	37	20
GADSDEN	20	19	15	20	9	ST. JOHNS	43	46	45	33	39
GILCHRIST	1	2	2	0	2	ST. LUCIE	73	65	81	80	78
GLADES	4	2	3	3	2	SANTA ROSA	22	35	33	23	28
GULF	1	4	7	2	11	SARASOTA	126	109	132	131	125
HAMILTON	0	2	1	4	1	SEMINOLE	124	131	102	96	103
HARDEE	13	13	2	9	6	SUMTER	12	13	12	6	12
HENDRY	16	22	14	10	10	SUWANNEE	7	6	10	10	6
HERNANDO	36	30	39	39	47	TAYLOR	5	3	11	10	3
HIGHLANDS	20	22	19	17	17	UNION	1	2	1	3	3
HILLSBOROUGH	551	553	546	565	489	VOLUSIA	230	246	267	243	237
HOLMES	1	3	3	2	1	WAKULLA	2	4	6	11	2
INDIAN RIVER	29	39	27	35	38	WALTON	13	7	11	10	7
JACKSON	11	14	11	7	11	WASHINGTON	5	2	2	9	2
JEFFERSON	2	3	0	2	1	UNKNOWN	7	7	12	10	3
LAFAYETTE	0	0	0	0	3	STATEWIDE	8,035	8,054	7,794	8,074	7,536
LAKE	50	60	49	63	45						
LEE	302	147	179	162	192						
LEON	97	128	77	101	95						

Vehicle and Truck Information

1999 Florida Traffic Crash Facts

TABLE 35 Crashes by Vehicle Type

Vehicle Type	All Crashes	Fatal Crashes	Injury Crashes	Property Damage Only Crashes
Automobile	259,942	2,481	186,144	71,317
Passenger Van	28,542	327	20,719	7,496
Light Truck (2 rear tires)	56,894	759	40,471	15,664
Medium Truck (4 rear tires)	5,428	88	3,696	1,644
Heavy Truck	3,264	70	2,092	1,102
Truck-Tractor (cab)	3,785	114	2,379	1,292
Motor Home (RV)	354	10	245	99
Bus	2,428	33	1,495	900
Bicycle	5,351	128	4,847	376
Motorcycle	4,544	172	4,128	244
Moped	425	9	386	30
All Terrain Vehicle	383	8	322	53
Train	70	15	29	26
Other	2,283	46	1,584	653
Total	373,693	4,260	268,537	100,896

TABLE 36 Truck Crashes by Contributing Cause

Contributing Cause	Type of Truck			
	Light Truck (Pickup)	Medium Truck	Heavy Truck	Truck-Tractor (cab)
Careless Driving	12,631	1,173	629	775
Failed/Yield Right-of-Way	5,009	445	211	218
Improper Backing	563	147	113	55
Improper Lane Change	728	132	97	192
Improper Turn	920	95	89	95
Alcohol-Under Influence	1,680	47	9	16
Drugs-Under Influence	52	3	1	0
Alcohol & Drugs-Under Influ.	204	10	1	2
Followed Too Closely	1,206	123	60	75
Disregarded Traffic Signal	1,165	80	50	60
Exceeded Speed Limit	1,331	76	50	41
Disregarded Stop Sign	493	32	16	10
Failed to Maintain Equipment	316	64	53	49
Improper Passing	182	9	10	8
Drove Left of Center	318	27	15	11
Obstructing Traffic	121	48	20	30
Improper Load	74	32	17	22
Disregard Other Traff. Control	96	11	3	2
Driving Wrong Side/Way	120	6	7	1
All Other	3,536	428	244	276
Total	30,745	2,988	1,695	1,938

*There can be up to three contributing causes per driver.

Alcohol-Related Crashes By City/Locality

1999 Florida Traffic Crash Facts

Locality	County	Total Crashes	Alcohol- Related Crashes		Locality	County	Total Crashes	Alcohol- Related Crashes	
			Related Crashes	as % of Total				Related Crashes	as % of Total
Alachua	Alachua	90	9	10.00	Bronson	Levy	16	4	25.00
Alford	Jackson	3	1	33.33	Brooksville	Hernando	149	13	8.72
Altamonte Springs	Seminole	337	37	10.98	Browardale	Broward	4	0	0.00
Anna Maria	Manatee	11	1	9.09	Bunche Park	Miami-Dade	3	0	0.00
Apalachicola	Franklin	16	0	0.00	Bunnell	Flagler	33	2	6.06
Apopka	Orange	212	20	9.43	Bushnell	Sumter	26	2	7.69
Arcadia	De Soto	81	5	6.17	Callahan	Nassau	22	0	0.00
Archer	Alachua	22	4	18.18	Calloway	Bay	100	16	16.00
Astatula	Lake	2	0	0.00	Canova Beach	Brevard	1	0	0.00
Atlantic Beach	Duval	142	21	14.79	Cantonment	Escambia	30	3	10.00
Atlantis	Palm Beach	18	3	16.67	Cape Canaveral	Brevard	87	23	26.44
Auburndale	Polk	271	23	8.49	Cape Coral	Lee	774	95	12.27
Aventura	Miami-Dade	443	10	2.26	Carol City	Miami-Dade	215	8	3.72
Avon Park	Highlands	125	8	6.40	Carrabelle	Franklin	5	1	20.00
Azalea Park	Orange	4	0	0.00	Carver Ranch Estates	Broward	19	2	10.53
Bal Harbor	Miami-Dade	53	1	1.89	Casselberry	Seminole	425	38	8.94
Baldwin	Duval	18	0	0.00	Cecil Field NAS	Duval	3	0	0.00
Bartow	Polk	247	17	6.88	Cedar Grove	Bay	11	3	27.27
Bascom	Jackson	2	0	0.00	Cedar Key	Levy	12	3	25.00
Bay Harbor Islands	Miami-Dade	29	2	6.90	Center Hill	Sumter	4	1	25.00
Bay Lake	Orange	6	0	0.00	Century	Escambia	17	2	11.76
Bell	Gilchrist	1	1	100.00	Chattahoochee	Gadsden	8	0	0.00
Belle Glade	Palm Beach	270	23	8.52	Chiefland	Levy	44	5	11.36
Belle Isle	Orange	1	0	0.00	Chipley	Washington	30	1	3.33
Belleair	Pinellas	12	1	8.33	Clair-Mel	Hillsborough	16	1	6.25
Belleair Beach	Pinellas	12	1	8.33	Clearwater	Pinellas	1747	191	10.93
Belleair Bluffs	Pinellas	33	1	3.03	Clermont	Lake	151	6	3.97
Belleview	Marion	44	3	6.82	Clewiston	Hendry	70	7	10.00
Belvedere Homes	Palm Beach	4	0	0.00	Cloud Lake	Palm Beach	4	0	0.00
Bethune Cookman Coll	Volusia	5	0	0.00	Cocoa	Brevard	476	51	10.71
Biscayne Gardens	Miami-Dade	12	2	16.67	Cocoa Beach	Brevard	223	35	15.70
Biscayne Park	Miami-Dade	14	0	0.00	Cocoa West	Brevard	9	4	44.44
Blountstown	Calhoun	17	2	11.76	Coconut Creek	Broward	410	26	6.34
Boca Chica	Monroe	2	0	0.00	Coconut Grove	Miami-Dade	8	1	12.50
Boca Raton	Palm Beach	1490	81	5.44	Collier Manr/Cresthavn	Broward	7	1	14.29
Bonifay	Holmes	1	0	0.00	Combee Settlement	Polk	2	0	0.00
Bonita Springs	Lee	80	14	17.50	Cooper City	Broward	236	29	12.29
Bowling Green	Hardee	10	1	10.00	Coral Gables	Miami-Dade	783	49	6.26
Boynton Beach	Palm Beach	804	90	11.19	Coral Springs	Broward	1366	83	6.08
Bradenton	Manatee	249	22	8.84	Coral Way Village	Miami-Dade	3	0	0.00
Bradenton Beach	Manatee	16	2	12.50	Corry Field NAS	Escambia	2	0	0.00
Brandon	Hillsborough	197	18	9.14	Cottdonale	Jackson	3	1	33.33
Branford	Suwannee	6	1	16.67	Crawfordville	Wakulla	10	1	10.00
Brent	Escambia	33	6	18.18	Crescent City	Putnam	20	2	10.00
Briyn Breezes	Palm Beach	2	0	0.00	Crestview	Okaloosa	226	23	10.18
Bristol	Liberty	3	0	0.00	Cross City	Dixie	9	2	22.22
Broadview Park	Broward	10	1	10.00	Crystal River	Citrus	139	13	9.35

Alcohol-Related Crashes By City/Locality

1999 Florida Traffic Crash Facts

Locality	County	Total Crashes	Alcohol- Related Crashes	Alcohol- Related Crashes as % of Total	Locality	County	Total Crashes	Alcohol- Related Crashes	Alcohol- Related Crashes as % of Total
Cutler Ridge	Miami-Dade	9	1	11.11	Freeport	Walton	3	1	33.33
Dade City	Pasco	196	8	4.08	Frostproof	Polk	20	4	20.00
Dania Beach	Broward	476	43	9.03	Fruitland Park	Lake	46	6	13.04
Davenport	Polk	11	2	18.18	Ft. Lauderdale	Broward	4391	402	9.16
Davie	Broward	1566	125	7.98	Ft. Meade	Polk	27	5	18.52
Daytona Beach	Volusia	2270	198	8.72	Ft. Myers	Lee	1627	140	8.60
Daytona Beach Airport	Volusia	2	1	50.00	Ft. Myers Beach	Lee	14	1	7.14
Daytona Beach Shores	Volusia	38	11	28.95	Ft. Myers SE	Lee	2	0	0.00
De Bary	Volusia	119	16	13.45	Ft. Myers SW	Lee	16	1	6.25
De Land	Volusia	263	34	12.93	Ft. Myers VII/Pin Mn	Lee	5	0	0.00
De Leon Springs	Volusia	20	3	15.00	Ft. Pierce	St. Lucie	575	56	9.74
Deerfield Beach	Broward	1004	76	7.57	Ft. Pierce NW	St. Lucie	35	6	17.14
Defuniak Springs	Walton	89	8	8.99	Ft. Walton Beach	Okaloosa	261	33	12.64
Delray Beach	Palm Beach	817	71	8.69	Ft. White	Columbia	5	1	20.00
Deltona	Volusia	494	47	9.51	Gainesville	Alachua	1960	185	9.44
Destin	Walton	1	0	0.00	Glen Ridge	Palm Beach	1	0	0.00
Dinsmore	Duval	17	2	11.76	Golden Beach	Miami-Dade	9	0	0.00
Dundee	Polk	44	1	2.27	Golden Glades	Miami-Dade	37	0	0.00
Dunedin	Pinellas	475	44	9.26	Goulds	Miami-Dade	22	2	9.09
Dunnellon	Marion	17	0	0.00	Graceville	Jackson	9	1	11.11
Eagle Lake	Polk	18	2	11.11	Grand Ridge	Jackson	4	0	0.00
Eagle Peak	Polk	4	0	0.00	Green Cove Springs	Clay	112	10	8.93
East Lake Orient Park	Hillsborough	2	0	0.00	Greenacres City	Palm Beach	255	24	9.41
East Naples	Collier	361	65	18.01	Greenville	Madison	3	0	0.00
Eatonville	Orange	5	2	40.00	Gretna	Gadsden	9	1	11.11
Ebro	Washington	2	0	0.00	Groveland	Lake	53	15	28.30
Edgewater	Volusia	205	23	11.22	Gulf Breeze	Santa Rosa	62	15	24.19
Edgewood	Orange	50	4	8.00	Gulf Gate Estates	Sarasota	3	1	33.33
EI Portal	Miami-Dade	7	0	0.00	Gulf Stream	Palm Beach	8	1	12.50
Ellyson Field NAS	Escambia	3	0	0.00	Gulfport	Pinellas	126	14	11.11
Englewood	Charlotte	170	17	10.00	Hacienda	Broward	2	0	0.00
Englewood	Sarasota	4	0	0.00	Haines City	Polk	264	23	8.71
Eustis	Lake	214	30	14.02	Hallandale	Broward	625	24	3.84
Everglades	Collier	1	0	0.00	Hastings	St. Johns	11	1	9.09
FL International Univ.	Miami-Dade	6	1	16.67	Havana	Gadsden	4	1	25.00
FL School for Deaf/Bld	St. Johns	1	0	0.00	Haverhill	Palm Beach	16	2	12.50
Fairview Shores	Orange	1	0	0.00	Hawthorne	Alachua	31	2	6.45
Fanning Springs	Levy	1	0	0.00	Hialeah	Miami-Dade	4124	223	5.41
Fellsmere	Indian River	4	1	25.00	Hialeah Gardens	Miami-Dade	205	16	7.80
Fernandina Beach	Nassau	97	9	9.28	High Springs	Alachua	65	5	7.69
Flagler Beach	Flagler	41	9	21.95	Highland Beach	Palm Beach	18	0	0.00
Florida A&M University	Leon	43	1	2.33	Highland Park Village	Polk	1	0	0.00
Florida Atlantic Univ.	Palm Beach	3	0	0.00	Hilliard	Nassau	18	1	5.56
Florida City	Miami-Dade	7	0	0.00	Hillsboro Beach	Broward	17	1	5.88
Florida Inst. of Tech.	Brevard	1	0	0.00	Hobe Sound	Martin	68	15	22.06
Florida Southern Coll.	Polk	1	1	100.00	Holden Hills	Orange	18	3	16.67
Florida State Univ.	Leon	15	0	0.00	Holly Hill	Volusia	205	28	13.66

Alcohol-Related Crashes By City/Locality

1999 Florida Traffic Crash Facts

Locality	County	Total Crashes	Alcohol-Related		Locality	County	Total Crashes	Alcohol-Related	
			Crashes	as % of Total				Crashes	as % of Total
Hollywood	Broward	2283	161	7.05	Lake City	Columbia	132	9	6.82
Holmes Beach	Manatee	31	5	16.13	Lake Clarke Shores	Palm Beach	8	1	12.50
Homestead	Miami-Dade	353	45	12.75	Lake Forest	Broward	5	1	20.00
Homestead AFB	Miami-Dade	14	0	0.00	Lake Hamilton	Polk	23	3	13.04
Homosassa Springs	Citrus	7	0	0.00	Lake Helen	Volusia	4	2	50.00
Horseshoe Beach	Dixie	1	0	0.00	Lake Holloway	Polk	1	0	0.00
Howey-in-the-Hills	Lake	3	0	0.00	Lake Magdalene	Hillsborough	14	1	7.14
Hypoluxo	Palm Beach	10	3	30.00	Lake Mary	Seminole	289	20	6.92
Immokalee	Collier	224	41	18.30	Lake Park	Palm Beach	112	10	8.93
Indialantic	Brevard	42	8	19.05	Lake Placid	Highlands	22	0	0.00
Indian Creek Village	Miami-Dade	24	2	8.33	Lake Wales	Polk	200	22	11.00
Indian Harbour Beach	Brevard	45	6	13.33	Lake Worth	Palm Beach	822	116	14.11
Indian River Shores	Indian River	12	0	0.00	Lakeland	Polk	1448	142	9.81
Indian Rocks Beach	Pinellas	29	6	20.69	Land O'Lakes	Pasco	26	2	7.69
Indian Shores	Pinellas	22	6	27.27	Lantana	Palm Beach	215	33	15.35
Indiantown	Martin	61	14	22.95	Largo	Pinellas	896	146	16.29
Inglis	Levy	12	4	33.33	Lauderdale Lakes	Broward	562	28	4.98
Interlachen	Putnam	15	2	13.33	Lauderdale-by-the-Sea	Broward	41	4	9.76
Inverness	Citrus	86	10	11.63	Lauderhill	Broward	648	27	4.17
Islamorada	Monroe	88	16	18.18	Laurel Hill	Okaloosa	2	0	0.00
Islandia	Miami-Dade	1	0	0.00	Lawtey	Bradford	6	2	33.33
Jacksonville	Duval	12815	987	7.70	Layton	Monroe	2	0	0.00
Jacksonville Beach	Duval	525	79	15.05	Lazy Lake Village	Broward	3	0	0.00
Jacksonville NAS	Duval	5	0	0.00	Lee Co. Airport PD	Lee	36	3	8.33
Jacksonville Univ.	Duval	5	0	0.00	Lee Field NAS	Clay	1	0	0.00
Jasper	Hamilton	11	5	45.45	Leesburg	Lake	356	26	7.30
Jay	Santa Rosa	4	0	0.00	Lehigh Acres	Lee	52	8	15.38
Jensen Beach	Martin	138	31	22.46	Leisure City	Miami-Dade	3	0	0.00
June Park	Brevard	3	0	0.00	Lighthouse Point	Broward	190	15	7.89
Juno Beach	Palm Beach	26	12	46.15	Live Oak	Suwannee	199	17	8.54
Jupiter	Palm Beach	391	58	14.83	Longboat Key	Manatee	17	0	0.00
Jupiter Island	Martin	5	0	0.00	Longboat Key	Sarasota	35	5	14.29
Kendall	Miami-Dade	73	1	1.37	Longwood	Seminole	161	18	11.18
Kennedy Space Center	Brevard	29	1	3.45	Lynn Haven	Bay	126	7	5.56
Kenneth City	Pinellas	60	5	8.33	Macclenny	Baker	51	3	5.88
Key Biscayne	Miami-Dade	95	4	4.21	Maddill AFB	Hillsborough	3	1	33.33
Key Colony Beach	Monroe	5	0	0.00	Madeira Beach	Pinellas	95	18	18.95
Key Largo	Monroe	199	32	16.08	Madison	Madison	32	3	9.38
Key West	Monroe	505	71	14.06	Maitland	Orange	191	19	9.95
Keystone Heights	Clay	23	2	8.70	Malabar	Brevard	13	8	61.54
Kissimmee	Osceola	622	65	10.45	Malone	Jackson	1	0	0.00
La Belle	Hendry	43	6	13.95	Manalapan	Palm Beach	14	0	0.00
La Crosse	Alachua	5	0	0.00	Mangonia Park	Palm Beach	109	0	0.00
Lady Lake	Lake	107	8	7.48	Marathon	Monroe	140	20	14.29
Lake Alfred	Polk	29	5	17.24	Margate	Broward	566	58	10.25
Lake Buena Vista	Orange	50	4	8.00	Marianna	Jackson	64	1	1.56
Lake Butler	Union	16	1	6.25	Marineland	St. Johns	1	0	0.00

Alcohol-Related Crashes By City/Locality

1999 Florida Traffic Crash Facts

Locality	County	Total Crashes	Alcohol-Related		Locality	County	Total Crashes	Alcohol-Related	
			Crashes	as % of Total				Crashes	as % of Total
Mary Esther	Okaloosa	85	8	9.41	North Lauderdale	Broward	254	17	6.69
Mascotte	Lake	27	3	11.11	North Miami	Miami-Dade	1925	57	2.96
Mayo	Lafayette	6	0	0.00	North Miami Beach	Miami-Dade	929	42	4.52
Mayport NAS	Duval	1	0	0.00	North Naples	Collier	250	34	13.60
Mccoy AFB	Orange	3	1	33.33	North Palm Beach	Palm Beach	160	15	9.38
Medley	Miami-Dade	225	6	2.67	Norwood	Miami-Dade	5	0	0.00
Melbourne	Brevard	672	114	16.96	Oak Hill	Volusia	12	0	0.00
Melbourne Beach	Brevard	23	3	13.04	Oakland	Orange	38	2	5.26
Melbourne Village	Brevard	11	0	0.00	Oakland Park	Broward	1181	86	7.28
Melrose Park	Broward	6	0	0.00	Ocala	Marion	1192	84	7.05
Merritt Island	Brevard	441	66	14.97	Ocean Breeze Park	Martin	2	2	100.00
Mexico Beach	Bay	15	3	20.00	Ocean City	Okaloosa	13	3	23.08
Miami	Miami-Dade	8473	251	2.96	Ocean Ridge	Palm Beach	10	1	10.00
Miami Beach	Miami-Dade	2771	183	6.60	Ocoee	Orange	261	32	12.26
Miami Lakes	Miami-Dade	111	3	2.70	Ojus	Miami-Dade	9	0	0.00
Miami Shores	Miami-Dade	137	7	5.11	Okaloosa Cnty Arpt	Okaloosa	3	0	0.00
Miami Springs	Miami-Dade	92	3	3.26	Okeechobee	Okeechobee	164	11	6.71
Miami TP	Miami-Dade	5	0	0.00	Oldsmar	Pinellas	178	29	16.29
Miami-Dade Co Sch Pl	Miami-Dade	313	12	3.83	Olympia Heights	Miami-Dade	1	0	0.00
Micanopy	Alachua	9	1	11.11	Oneco	Manatee	3	0	0.00
Micc. Indian Res.	Miami-Dade	14	2	14.29	Opa Locka	Miami-Dade	355	12	3.38
Middleburg	Clay	20	2	10.00	Ora Tran A	Orange	1	0	0.00
Midway	Gadsden	1	0	0.00	Orange City	Volusia	196	13	6.63
Milton	Santa Rosa	90	10	11.11	Orange Park	Clay	177	25	14.12
Mims	Brevard	35	9	25.71	Orlando	Orange	5550	378	6.81
Minneola	Lake	13	2	15.38	Orlovista	Orange	4	0	0.00
Miramar	Broward	710	53	7.46	Ormond Beach	Volusia	393	59	15.01
Monticello	Jefferson	5	0	0.00	Ormond by the Sea	Volusia	3	0	0.00
Montverde	Lake	1	0	0.00	Otter Creek	Levy	3	1	33.33
Moore Haven	Glades	9	1	11.11	Oviedo	Seminole	200	7	3.50
Mount Dora	Lake	189	10	5.29	Pahokee	Palm Beach	57	4	7.02
Mount Dora	Orange	1	1	100.00	Palatka	Putnam	448	39	8.71
Mulberry	Polk	42	3	7.14	Palm Bay	Brevard	532	65	12.22
Myrtle Grove	Escambia	60	5	8.33	Palm Beach	Palm Beach	108	16	14.81
N. Redington Beach	Pinellas	6	2	33.33	Palm Beach AFB	Palm Beach	1	0	0.00
Naples	Collier	423	51	12.06	Palm Beach Gardens	Palm Beach	448	44	9.82
Naranja	Miami-Dade	9	2	22.22	Palm Beach School Bd	Palm Beach	2	0	0.00
Neptune Beach	Duval	62	11	17.74	Palm Beach Shores	Palm Beach	3	1	33.33
New Port Richey	Pasco	335	37	11.04	Palm City	Martin	82	12	14.63
New Smyrna Beach	Volusia	303	29	9.57	Palm River/Clair Mel	Hillsborough	7	1	14.29
Newberry	Alachua	46	10	21.74	Palm Shores	Brevard	3	0	0.00
Niceville	Okaloosa	114	16	14.04	Palm Springs	Palm Beach	85	9	10.59
Nokomis/Laurel	Sarasota	2	1	50.00	Palmetto	Manatee	155	39	25.16
North Andrews Garden	Broward	2	0	0.00	Panama City	Bay	773	99	12.81
North Bay	Miami-Dade	3	0	0.00	Panama City Beach	Bay	205	49	23.90
North Bay Village	Miami-Dade	57	5	8.77	Parker	Bay	63	11	17.46
North Ft. Myers	Lee	92	20	21.74	Parkland	Broward	45	5	11.11

Alcohol-Related Crashes By City/Locality

1999 Florida Traffic Crash Facts

Locality	County	Total Crashes	Alcohol- Related Crashes	Alcohol- Related Crashes as % of Total	Locality	County	Total Crashes	Alcohol- Related Crashes	Alcohol- Related Crashes as % of Total
Parrish	Manatee	1	0	0.00	Sarasota	Sarasota	1358	147	10.82
Patrick AFB	Brevard	5	1	20.00	Sarasota S	Sarasota	2	0	0.00
Pembroke Park	Broward	268	17	6.34	Sarasota SE	Sarasota	1	0	0.00
Pembroke Pines	Broward	1692	57	3.37	Sarasota-Manatee Airp	Sarasota	1	0	0.00
Pensacola	Escambia	622	86	13.83	Satellite Beach	Brevard	53	10	18.87
Perrine	Miami-Dade	33	1	3.03	Sea Ranch Lakes	Broward	12	0	0.00
Perry	Taylor	122	11	9.02	Sebastian	Indian River	67	12	17.91
Pierson	Volusia	19	2	10.53	Sebring	Highlands	105	6	5.71
Pine Crest Village	Miami-Dade	6	0	0.00	Seminole	Pinellas	260	22	8.46
Pine Hills	Orange	282	10	3.55	Seminole Indian Res.	Broward	1	0	0.00
Pinellas Park	Pinellas	712	72	10.11	Seminole Park	Pinellas	3	0	0.00
Pinewood	Miami-Dade	9	0	0.00	Seville	Volusia	8	1	12.50
Pinl Co Campus P.D.	Pinellas	1	0	0.00	Sewalls Point	Martin	9	2	22.22
Plant City	Hillsborough	449	28	6.24	Shalimar	Okaloosa	2	1	50.00
Plantation	Broward	1363	78	5.72	Siesta Key	Sarasota	2	0	0.00
Plantation	Monroe	3	0	0.00	Silver Springs Shores	Marion	5	2	40.00
Polk City	Polk	14	0	0.00	Sky Lake	Orange	5	1	20.00
Pompano Beach	Broward	1895	157	8.28	Sneads	Jackson	8	1	12.50
Pompano Beach Hlnds	Broward	1	0	0.00	Sopchoppy	Wakulla	2	1	50.00
Ponce De Leon	Holmes	2	1	50.00	South Bay	Palm Beach	34	7	20.59
Ponce Inlet	Volusia	10	5	50.00	South Daytona	Volusia	153	18	11.76
Ponte Vedra	St. Johns	11	3	27.27	South Miami	Miami-Dade	70	3	4.29
Port Charlotte	Charlotte	280	27	9.64	South Miami Heights	Miami-Dade	1	1	100.00
Port Charlotte	Sarasota	101	10	9.90	South Palm Beach	Palm Beach	4	0	0.00
Port Orange	Volusia	388	57	14.69	South Pasadena	Pinellas	57	10	17.54
Port Richey	Pasco	147	18	12.24	South Patrick Shores	Brevard	5	0	0.00
Port Salerno	Martin	39	18	46.15	Springfield	Bay	85	10	11.76
Port St. Joe	Gulf	23	0	0.00	St. Augustine	St. Johns	202	22	10.89
Port St. Lucie	St. Lucie	746	81	10.86	St. Augustine Beach	St. Johns	26	8	30.77
Punta Gorda	Charlotte	150	18	12.00	St. Cloud	Osceola	232	17	7.33
Quincy	Gadsden	153	13	8.50	St. Pete/Clwrtr Airpt	Pinellas	2	0	0.00
Reddick	Marion	3	0	0.00	St. Petersburg	Pinellas	3617	376	10.40
Redington Beach	Pinellas	14	4	28.57	St. Petersburg Beach	Pinellas	207	27	13.04
Redington Shores	Pinellas	20	6	30.00	Starke	Bradford	68	8	11.76
Richmond Heights	Miami-Dade	250	13	5.20	Stetson University	Volusia	23	2	8.70
Ridgewood Heights	Sarasota	2	1	50.00	Stuart	Martin	440	51	11.59
Riverland	Broward	9	0	0.00	Sunny Isles	Miami-Dade	9	1	11.11
Riviera Beach	Palm Beach	507	33	6.51	Sunrise	Broward	455	36	7.91
Rockledge	Brevard	106	10	9.43	Surfside	Miami-Dade	88	4	4.55
Royal Palm Beach	Palm Beach	233	24	10.30	Sweetwater	Miami-Dade	86	2	2.33
Ruskin	Hillsborough	20	4	20.00	Sweetwater Creek	Hillsborough	1	0	0.00
Safety Harbor	Pinellas	144	17	11.81	Tallahassee	Leon	4670	363	7.77
San Antonio	Pasco	3	0	0.00	Tamarac	Broward	730	44	6.03
Sanford	Seminole	542	43	7.93	Tampa	Hillsborough	6984	603	8.63
Sanibel	Lee	38	3	7.89	Tampa Int'l Airport	Hillsborough	61	3	4.92
Santa Fe Comm. Col.	Alachua	3	1	33.33	Tarpon Springs	Pinellas	405	47	11.60
Santa Rosa Beach	Walton	6	1	16.67	Tavares	Lake	84	10	11.90

Alcohol-Related Crashes By City/Locality

1999 Florida Traffic Crash Facts

Locality	County	Total Crashes	Alcohol- Related Crashes		Locality	County	Total Crashes	Alcohol- Related Crashes	
			Related Crashes	as % of Total				Related Crashes	as % of Total
Tavernier	Monroe	46	7	15.22	Wewahitchka	Gulf	6	1	16.67
Temple Terrace	Hillsborough	225	23	10.22	White Springs	Hamilton	3	0	0.00
Tequesta Village	Palm Beach	27	4	14.81	Whiting Field	Santa Rosa	1	0	0.00
Tice	Lee	14	3	21.43	Wildwood	Sumter	36	6	16.67
Titusville	Brevard	415	37	8.92	Williston	Levy	28	2	7.14
Treasure Island	Pinellas	105	23	21.90	Wilton Manors	Broward	190	23	12.11
Trenton	Gilchrist	8	1	12.50	Windermere	Orange	13	2	15.38
Uleta	Miami-Dade	1	0	0.00	Winter Garden	Orange	159	18	11.32
Umatilla	Lake	3	0	0.00	Winter Haven	Polk	515	41	7.96
Unincorporated County	Miami-Dade	41	1	2.44	Winter Park	Orange	281	38	13.52
Union Park	Orange	2	0	0.00	Winter Springs	Seminole	72	11	15.28
Univ. of Central FL	Orange	24	3	12.50	Yankeetown	Levy	1	1	100.00
Univ. of N. Florida	Duval	30	1	3.33	Yulee	Nassau	16	1	6.25
Univ. of S. Florida	Hillsborough	68	5	7.35	Zephyrhills	Pasco	160	9	5.63
Univ. of W. Florida	Escambia	12	0	0.00	Zolfo Springs	Hardee	10	0	0.00
University of Florida	Alachua	60	7	11.67					
University of Miami	Miami-Dade	6	0	0.00					
University of Tampa	Hillsborough	2	0	0.00					
Valparaiso	Okaloosa	20	1	5.00					
Venice	Sarasota	146	14	9.59					
Venice South	Sarasota	10	0	0.00					
Vernon	Washington	3	1	33.33					
Vero Beach	Indian River	294	26	8.84					
Vero Beach South	Indian River	3	0	0.00					
Virginia Gardens	Miami-Dade	7	0	0.00					
Wahneta	Polk	9	0	0.00					
Waldo	Alachua	12	1	8.33					
Ward Ridge	Gulf	1	1	100.00					
Warrington	Escambia	42	6	14.29					
Watertown	Columbia	1	0	0.00					
Wauchula	Hardee	75	7	9.33					
Wausua	Washington	3	0	0.00					
Webster	Sumter	1	0	0.00					
Weekiwachee	Hernando	4	2	50.00					
Welaka	Putnam	4	2	50.00					
Wellington	Palm Beach	140	15	10.71					
West Bradenton	Manatee	646	62	9.60					
West Eau Gallie	Brevard	1	0	0.00					
West Gate	Palm Beach	3	0	0.00					
West Hollywood	Broward	14	3	21.43					
West Melbourne	Brevard	93	11	11.83					
West Miami	Miami-Dade	82	6	7.32					
West Palm Beach	Palm Beach	1915	139	7.26					
West Pensacola	Escambia	21	3	14.29					
West Winter Haven	Polk	2	1	50.00					
Weston	Broward	218	15	6.88					
Westview	Miami-Dade	1	0	0.00					