



Table of Contents

Source of Data	3
Definition of Terms	4
State of Florida Summary	5-6
Safety Equipment Use in Crashes.....	7-8
Child Passenger and Safety Equipment Use.....	9
Age of Drivers in Crashes	10-11
Crash Rates for Florida Resident Drivers in All Crashes by Age Groups	10
Crash Rates for Florida Resident Drinking Drivers in All Crashes by Age Groups.....	11
Selected Age Groups.....	12-13
Crash Rates for Florida Resident Drivers in All Crashes for a Selected Age Group (15 – 29).....	12
Crash Rates for Florida Resident Drivers in All Crashes for a Selected Age Group (70 – 85+).....	12
Crash Rates for Florida Resident Drinking Drivers in all Crashes for a Selected Age Group (15 – 29)	13
Crash Rates for Florida Resident Drinking Drivers in all Crashes for a Selected Age Group (70 – 85+)	13
Driver Profile	14-15
Drivers Killed or Injured by Residence and Gender.....	14
Drivers Involved in Crashes by Age Groups.....	15
Persons in Crashes by Age	16-17
Persons Killed.....	16
Persons Injured.....	16
Motorcyclist and Bicyclist Crash Trends	18
Motorcyclists and Bicyclists Killed	18
Motorcyclists and Bicyclists Injured	18
Pedestrian Fatality Trend.....	19
Pedestrians Killed	19
Pedestrian Fatality Rate	19
Pedestrian Behavior	20-21
Pedestrians Killed in Crashes by Age and Type of Actions	20
Pedestrians Injured in Crashes by Age and Type of Actions	20
Pedestrians in Crashes by Age and Percent Drinking	21
Pedestrians in Crashes by Injury Severity and Percent Drinking	21
Truck Passengers.....	22
Passengers Riding in Beds of Light (pickup) Trucks by Numbers Killed/Injured	22
Passengers Riding in Beds of All Types of Trucks by Numbers Killed/Injured ...	22
Crash Conditions/Causal Factors/Environment	23-28
Florida Motoring Environment.....	23
Holiday Traffic Fatalities	24
Traffic Crashes by Month.....	25
All Crashes	25
Fatal Crashes.....	25
Traffic Crashes by Day of Week and Time of Day	26
All Crashes/Fatal Crashes.....	26
Contributing Causes	
Actions Attributed to Drivers Involved in Crashes.....	27
Environmental Causes.....	28
Lighting Conditions at the Time of Crash	28
Road Surface Conditions at Time of Crash	28
Type of Vehicle Collision	28


Table of Contents

County Data	29-40
Five Year Crash History by County	30
Five Year Alcohol-Related Crash History by County.....	31
Five Year Fatality History by Country	32
Five Year Alcohol-Related Fatality History by County.....	33
Five Year Injury History by County.....	34
Five Year Alcohol-Related Injury History by County	35
Five Year Property Damage Crash History by County	36
Five Year Bicycle Fatality History by County	37
Five Year Bicycle Injury History by County.....	38
Five Year Pedestrian Fatality History by County.....	39
Five Year Pedestrian Injury History by County	40
Vehicle and Truck Information	41
Fatal and Injury Crashes by Vehicle Type.....	41
Truck Crashes by Contributing Cause	41
Alcohol-Related Crashes by Locality.....	42-46
Traffic Crash Report Form	

► Source of Data

The information contained in this Traffic Crash Facts booklet is extracted from law enforcement agency long-form reports of traffic crashes. A law enforcement officer must submit a long-form crash report when investigating:

Motor vehicle crashes resulting in death or personal injury, or

Motor vehicle crashes in which one or more of the following conditions occur:

Leaving the scene involving damage to an attended vehicle or property (Section 316.061 (1), F.S.);

Driving while under the influence of alcoholic beverages, chemical substances, or controlled substances or with an unlawful blood alcohol level (Section 316.193, F.S.).

An investigating officer *may* report other traffic crashes on the long-form. In particular, applicable statutes specify an officer's discretion to submit a long-form report in crashes where a vehicle is rendered inoperable to the degree that a wrecker is required to remove it from traffic.

Statutory revisions in 1983 and 1989 reduced the number of non-injury crashes required to be reported to the Department. Any presentation of historical data that includes such crashes, such as total traffic crash counts, will reflect these changes. Data on traffic crashes involving death, injury, or other criteria for law enforcement long-form reports as outlined above are not affected.

Please Note:

All 1992 data in this publication have been updated from preliminary figures published in the Department of Highway Safety and Motor Vehicles *Traffic Crash Data*, 1992. Figures from the 1992 publication should not be used for year-to-year comparisons.

► Definitions

The following terms are defined as they apply to the crash data presented in this publication. These definitions may differ from legal or other uses of the same terms.

Alcohol-related traffic crash-	A crash involving a driver and/or pedestrian for whom alcohol use was reported (does not presume intoxication).
Bicycle-	A vehicle propelled solely by human power or a motorized bicycle propelled by a combination of human power and an electric helper motor rated at 200 watts or less (this term does not include a vehicle with a seat height less than 26 inches from the ground when the seat is adjusted to its highest position, or a scooter or similar device).
Bicyclist-	The driver of a bicycle. A passenger on a bicycle is considered a vehicle passenger.
Driver-	Unless otherwise indicated, the operator of a motor vehicle or bicycle. Driver data typically exclude uninjured persons presumed to have been operating hit-and-run, phantom, or properly parked vehicles.
Fatal traffic crash-	A traffic crash that results in one or more fatalities within ninety days of occurrence.
First harmful event-	The first damage-producing event in a traffic crash.
Injury-	Hurt, damage, or loss sustained by a person as a result of a traffic crash.
Moped-	A motor-powered cycle with a pedal-activated motor and two brake horse-power maximum.
Motor vehicle-	Any motorized vehicle not operating on rails.
Motorcycle-	A motor vehicle, with a seat or saddle for the driver's use, traveling with no more than three wheels in contact with the ground, excluding a tractor or a moped.
Motorcyclist-	The driver of a motorcycle. A passenger on a motorcycle is considered a vehicle passenger.
Property damage only-	Loss of all or part of an individual's property resulting from a traffic crash not involving injury to a person.
Traffic crash-	A crash involving at least one motor vehicle on a roadway way that is open to the public.
Traffic fatality-	The death of a person as a direct result of a traffic crash within ninety days of the crash occurrence.
Vehicle occupants-	Drivers and passengers of automobiles, vans, trucks, buses, and motor homes.

► State of Florida Summary

Florida Traffic
Crash Facts 1998

ALL CRASHES

Compared to 1997, there was a 2% increase in traffic crashes investigated and reported.

Traffic crashes	245,440
Drivers involved	390,213
Average crashes per day	672

FATAL CRASHES AND FATALITIES

Compared to 1997, there was a 2.8% increase in traffic fatalities.

Fatalities	2,889
Fatal crashes	2,605

INJURY CRASHES

Compared to 1997, there was a .78% increase in traffic injuries.

Injuries	241,863
Injury crashes.....	149,315

ALCOHOL-RELATED CRASHES AND FATALITIES

29.8% of traffic fatalities and 9.3% of traffic crashes were alcohol-related.

Alcohol-related fatalities	862
Alcohol-related injuries	20,066
Alcohol-related crashes.....	22,741
Alcohol-related fatal crashes	771
Alcohol-related injury crashes.....	12,260

CRASH ENVIRONMENTS

60.1% of all crashes occurred in primarily business areas, while 57.8% of fatal crashes were in open country or residential areas.

Crashes in Business Areas	147,558
Crashes in Residential Areas	69,715
Crashes in Open Country.....	28,167
Fatal Crashes in Business Areas.....	1,100
Fatal Crashes in Residential Areas.....	623
Fatal Crashes in Open Country	882

PEDESTRIAN CRASHES

19.0% of all traffic fatalities were pedestrians.

Pedestrians killed.....	548
Pedestrians injured	8,074
Pedestrian crashes*	8,730

▶ State of Florida Summary

BICYCLE CRASHES

3.4% of all traffic fatalities were bicycle drivers.

Bicycle drivers killed.....	97
Bicycle drivers injured	5,137
Bicycle crashes	5,655

MOTORCYCLE CRASHES

5.5% of all traffic fatalities were motorcycle drivers.

Motorcyclists killed	158
Motorcyclists injured.....	3,820
Motorcycle crashes	4,325

*Pedestrian and bicycle crashes included all crashes involving pedestrians or bicycles and are not comparable to crashes by first harmful event as reported in previous editions.

► Safety Equipment Use in Crashes*

Florida Traffic Crash Facts 1998

TABLE 1 Comparative Safety Equipment Use By Drivers

VEHICLE OCCUPANTS	No Injury	%	Possible Injury	%	Non-Incapacitating Injury	%	Incapacitating Injury	%	Fatal	%	% Total	Total
With Safety Belt	185,636	64.47	63,374	22.01	29,033	10.08	9,541	3.31	366	0.13	100.00	287,950
With Safety Belt & Air Bag	22,056	49.01	11,640	25.86	8,463	18.80	2,690	5.98	157	0.35	100.00	45,006
With Air Bags Only	511	28.22	631	34.84	395	21.81	232	12.81	42	2.32	100.00	1,811
Not Using Safety Equipment	18,937	47.05	8,262	20.53	7,728	19.20	4,499	11.18	825	2.05	100.00	40,251
TOTAL	227,140		83,907		45,619		16,962		1,390			375,018

Comparative Safety Equipment Use By Vehicle Occupants Other Than Drivers

VEHICLE OCCUPANTS	No Injury	%	Possible Injury	%	Non-Incapacitating Injury	%	Incapacitating Injury	%	Fatal	%	% Total	Total
With Safety Belt	77,806	62.15	30,233	24.15	12,847	10.26	4,151	3.32	156	0.12	100.00	125,193
With Safety Belt & Air Bag	5,096	47.69	2,849	26.66	2,014	18.85	672	6.29	54	0.51	100.00	10,685
With Air Bags Only	151	30.38	170	34.21	113	22.74	54	10.87	9	1.81	100.00	497
Not Using Safety Equipment	25,396	57.70	8,222	18.68	6,691	15.20	3,309	7.52	395	0.90	100.00	44,013
TOTAL	108,449		41,474		21,665		8,186		614			180,388

More than 64 percent of the drivers using safety belts only avoided injury (Table 1), compared to 47 percent for those drivers not using safety equipment. For those drivers using safety belts, non-incapacitating injury, incapacitating injury, and fatal injury were 10.08 percent, 3.31 percent, and 0.13 percent respectively. The corresponding figures for drivers not using safety equipment were 19.20 percent, 11.18 percent, and 2.05 percent. The use of safety belts with air bags was more effective than the use of air bags only in preventing injury and reducing incapacitating and fatal injuries, but less effective than safety belt use only. The use of air bags only was the least effective way to avoid traffic injuries because air bags by themselves protect only in frontal crashes. Air bags offer maximum protection when used as supplemental protection for belted front-seat occupants in frontal crashes.

TABLE 1A Comparative Safety Equipment Use By Motorcyclists and Their Passengers

MOTORCYCLIST	No Injury	%	Possible Injury	%	Non-Incapacitating Injury	%	Incapacitating Injury	%	Fatal	%	% Total	Total
With Safety Helmet												
Driver	271	8.17	506	15.26	1,406	42.41	991	29.89	141	4.25	100.00	3,315
Passenger	43	9.19	68	14.53	208	44.44	136	29.06	13	2.78	100.00	468
Total	314		574		1,614		1,127		154			3,783
Without Safety Helmet												
Driver	174	15.68	247	22.25	424	38.20	248	22.34	17	1.53	100.00	1,110
Passenger	41	27.70	36	24.32	41	27.70	28	18.92	2	1.35	100.00	148
TOTAL	215		283		465		276		19			1,258

* Does not include cases with safety equipment use or injury level not stated.


Safety Equipment Use in Crashes*
**Florida Traffic
Crash Facts 1998**
TABLE 1B Comparative Safety Equipment Use By Bicyclists and Their Passengers

BICYCLIST	No Injury	%	Possible Injury	%	Non-Incapacitating Injury	%	Incapacitating Injury	%	Fatal	%	% Total	Total
With Safety Helmet												
Driver	39	6.25	153	24.52	346	55.45	78	12.50	8	1.28	100.00	624
Passenger	2	25.00	0	0.00	5	62.50	1	12.50	0	0.00	100.00	8
Total	41		153		351		79		8			632
Without Safety Helmet												
Driver	369	7.41	1,410	28.30	2,287	45.91	828	16.62	88	1.77	100.00	4,982
Passenger	55	40.74	25	18.52	39	28.89	13	9.63	3	2.22	100.00	135
TOTAL	424		1,435		2,326		841		91			5,117

Note: Injuries reported for motorcyclists and bicyclists include head and other bodily injuries.

* Does not include cases with safety equipment use or injury level not stated.

While the use of protective equipment by motorcyclists and their passengers (Table 1A) is expected to be more effective in preventing incapacitating and fatal injury, the inclusion of all types of bodily injuries for motorcyclists and their passengers fails to show the true effect of safety helmet use. The data for bicyclists (Table 1B) and their passengers are more supportive of the use of safety helmets. However, the independent effect of helmet use again can not be determined due to the inclusion of the severity of injury rather than the type of injury in the data collection instrument, where head injuries can be directly related to the use or lack of use of a helmet.



Child Restraint Device and Safety Belt Use

TABLE 2 By Age (Under 4 and 4 to 5)

Child Restraint Use	Age Group	No Injury	%	Injury	%	Fatal	%	% Total	TOTAL
With Restraint	<4	7,694	78.36	2,115	21.5	10	0.1	100	9,819
	4 to 5	4,980	73.54	1,786	26.4	6	0.1	100	6,772
Without Restraint	<4	657	58.50	457	40.7	9	0.8	100	1,123
	4 to 5	468	53.55	400	45.8	6	0.7	100	874

* Does not include passengers of bicycles, motorcycles, buses, or all-terrain vehicles.

Child Passengers Injured or Killed

TABLE 3 1989 Through 1998

Year	Age Group By Injury Level								TOTAL
	Injury				Fatal				
	<4	%	4 to 5	%	<4	%	4 to 5	%	
1989	3,438	12.09	2,272	10.68	21	10.55	10	9.43	5,741
1990	3,143	11.05	2,128	10.00	23	11.56	12	11.32	5,306
1991	2,866	10.08	1,861	8.74	18	9.05	9	8.49	4,754
1992	2,882	10.13	1,935	9.09	29	14.57	7	6.60	4,853
1993	2,685	9.44	1,975	9.28	24	12.06	8	7.55	4,692
1994	2,735	9.62	2,173	10.21	21	10.55	16	15.09	4,945
1995	2,652	9.32	2,238	10.52	13	6.53	14	13.21	4,917
1996	2,730	9.60	2,300	10.81	19	9.55	9	8.49	5,058
1997	2,740	9.63	2,215	10.41	12	6.03	9	8.49	4,976
1998	2,572	9.04	2,186	10.27	19	9.55	12	11.32	4,789
TOTAL	28,443	100	21,283	100	199	100	106	100	50,031

Table 2 indicates that more than 78 percent of children under 4 years of age avoided injuries during crashes because they were properly restrained, compared to about 58.5 percent who were without restraints. Similarly, 73.5 percent of children within the 4-5 age groups escaped injury compared to 53.5 percent without child restraints. The Injury level for children under 4 and the 4-5 age group, who were properly harnessed, was 21.5 percent and 26.4 percent respectively. The Injury levels for children of the same age groups without restraints were 40.7 percent and 45.8 percent. The fatal injury for children under 4 years of age without restraints was eight times higher than the under 4 years of age with restraints. Similarly, the fatal injury for children in the 4-5 age group without safety restraints was seven times higher than the same age group with safety restraints.

Table 3 provides comparative injury and fatality data for children under the 4 and 4-5 age groups. During 1989 through 1993, the injury level was consistently higher for children under 4 years of age, compared to those between 4-5 years of age. However, that trend reverses itself in 1994 by the increase in the injury level for the 4-5 year age group, compared to children under 4. Similar patterns exist for children involved in fatal crashes. That is, the fatality level is higher for children under 4 during 1989 through 1993, but the trend reverses in 1994 and continues through 1998.



Age of Drivers in Crashes*

Florida Traffic
Crash Facts 1998

TABLE 4 Crash Rates for Florida Resident Drivers in All Crashes By Age Groups

Age Groups	Driver Licenses Issued	Drivers In All Crashes	Rate Per 10,000 Licensed Drivers	Drivers In Fatal Crashes	Rate Per 10,000 Licensed Drivers
Under 15	0	479		11	
15-19	658,246	41,223	626.26	372	5.65
20-24	1,013,843	45,863	452.37	478	4.71
25-29	1,273,455	43,592	342.31	424	3.33
30-34	1,333,360	42,031	315.23	403	3.02
35-39	1,438,129	41,702	289.97	408	2.84
40-44	1,316,224	35,052	266.31	336	2.55
45-49	1,128,320	27,228	241.31	258	2.29
50-54	985,664	21,701	220.17	210	2.13
55-59	804,312	16,170	201.04	179	2.23
60-64	690,642	12,245	177.30	116	1.68
65-69	673,184	10,350	153.75	122	1.81
70-74	657,346	9,698	147.53	148	2.25
75-79	523,692	7,702	147.07	129	2.46
80-84	325,991	5,039	154.57	117	3.59
85 and over	189,724	3,298	173.83	89	4.69
Not Stated	0	2,614		18	
Total	13,012,132	365,987		3,818	

*Does not include drivers of bicycles, mopeds, ATVs, trains "in all crashes" and "in fatal crashes" categories of this table.

In Table 4, Florida residents involved in crashes are separated into four groups. The age group 15-34 has the highest rate of involvement in crashes ranging from 315 to 626, with young drivers under age 25 having higher rates of crash involvement. For the age group 35-59, the rate drops below 300, with the age group 55-59 having a rate of 201 as compared to 289 for the age group 35-39.

The rates drop below 200 for the age group 60-79. However, the rates begin to rise for the age group 80 and above. While the older drivers perform the least amount of driving, compared to young drivers, reduced vision, slowed reaction time, and restricted physical movement contribute to the increase in crash rates for this group.

While the rates for fatal crash involvement are much lower than crash rates, they more or less follow the same pattern as crash rates. That is, the age group 15-34 shows the highest rate of fatal crash involvement ranging from 3 to 5.65 fatalities per 10,000 licensed drivers. The rates for the 35-59 age group drops below 3. Age group 60-69 has the lowest rate for fatal crash involvement while age group 75 and above is at a high risk of fatal crash involvement similar to drivers under 35 years of age. It is obvious that age alone is a poor predictor of individual driving ability. Age, however, coupled with other risk factors, such as inclement weather, traffic conditions, and deteriorating skills associated with aging contribute to the likelihood of fatal crashes involving older drivers.



Age of Drivers in Crashes*

Florida Traffic
Crash Facts 1998

TABLE 5 Crash Rates For Florida Resident Drinking Drivers in All Crashes By Age Groups

Age Groups	Driver Licenses Issued	Drinking Drivers In All Crashes	Rate Per 10,000 Licensed Drivers	Drinking Drivers In Fatal Crashes	Rate Per 10,000 Licensed Drivers
Under 15	0	18		0	
15-19	658,246	1056	16.04	49	0.74
20-24	1,013,843	2427	23.94	99	0.98
25-29	1,273,455	2370	18.61	94	0.74
30-34	1,333,360	2426	18.19	75	0.56
35-39	1,438,129	2671	18.57	94	0.65
40-44	1,316,224	2127	16.16	52	0.40
45-49	1,128,320	1368	12.12	35	0.31
50-54	985,664	898	9.11	35	0.36
55-59	804,312	560	6.96	20	0.25
60-64	690,642	425	6.15	13	0.19
65-69	673,184	307	4.56	9	0.13
70-74	657,346	229	3.48	9	0.14
75-79	523,692	123	2.35	2	0.04
80-84	325,991	61	1.87	2	0.06
85 and over	189,724	59	3.11	2	0.11
Not Stated	0	166		4	
Total	13,012,132	17,291		594	

*Does not include drivers of bicycles, mopeds, ATVs, and trains "in all crashes" and "in fatal crashes" categories of this table.

The age group 15-44, in Table 5, distinguishes itself from the other age groups by a relatively high rate of alcohol involvement. With the exception of the 40-44 year age group, the rate for alcohol involvement drops dramatically from 12 per 10,000 licensed drivers for the 45-49 age group to 1.87 for the 80-84 age group. There is only a slight increase for the 85 and over age group. Table 5 further illustrates that young drivers under the age of 25 have higher rates of fatal crashes involving alcohol than those 25 year and over. This can be attributed to excessive driving during high-risk and alcohol-prone night hours. Young drivers have a relatively low level of driving experience, and any concentration of alcohol can significantly affect their driving performance. Compared to crash rates, involvement of resident drinking drivers in fatal crashes are low. However, a comparison of drinking drivers in fatal crashes shows that drivers under 30 years of age have the highest rate of involvement in alcohol-related fatalities. The rates for the age groups 30-34 and 35-39 are 0.56 and 0.65 respectively. The rates continue to drop for the remaining age groups ending with 0.11 for the 85 and older group.

Tables 6 and 6A illustrate the distribution of motor vehicle crash and fatality involvement for the 29 and under age group and for the 70 and above age group without alcohol involvement. The data in Table 6 supports the findings of Table 4 in which those drivers under 25 had the highest rates of crashes. Similarly, fatality rates for drivers under 25 in Table 6 closely resemble the rates cited for drivers under 25 in Table 4. Age group 70-73 shows a relatively high rate of crash (Table 6A). The crash rate for age group 74-79 tends to drop slightly and begins to rise at 81 with the highest rate for 85 and over. Furthermore, crash and fatality rates in Table 6A closely resemble the rates for the 70 and over age group in Table 4. Tables 7 and 7A provide data for involvement in motor vehicle crashes and fatalities for the 29 and under and the 70 and above age group with alcohol involvement. Age group 18-27 (Table 7) shows a relatively high rate of alcohol-related crash involvement; however, alcohol-related fatal crash is more serious for the 18-25 age group. Compared to the age group under 30, age group 70 and over (Table 7A) has a relatively low rate of alcohol-related crashes. With the exception of age group 70-72 and 85 and over, the alcohol-related crash rates for age group 73-84 is below 3 per 10,000. Involvement in alcohol-related fatal crashes for age group 70 and above remain below the rate of 1 per 10,000.



Selected Age Group*

Florida Traffic
Crash Facts 1998

TABLE 6 Crash Rates for Florida Resident Drivers
In All Crashes for a Selected Age Group (15 - 29)

Age of Driver	Driver Licenses Issued	Drivers in All Crashes	Rate Per 10,000 Licensed Drivers	Drivers In Fatal Crashes	Rate Per 10,000 Licensed Drivers
Under 15	0	479		11	
15	55,516	685	123.39	10	1.80
16	117,808	7,631	647.75	75	6.37
17	144,219	10,051	696.93	77	5.34
18	164,302	11,947	727.14	117	7.12
19	176,401	10,909	618.42	93	5.27
20	185,288	10,020	540.78	94	5.07
21	199,494	9,759	489.19	99	4.96
22	203,531	8,918	438.16	92	4.52
23	207,366	8,706	419.84	96	4.63
24	218,164	8,460	387.78	97	4.45
25	227,459	8,839	388.60	88	3.87
26	243,989	8,852	362.80	92	3.77
27	264,125	8,939	338.44	87	3.29
28	273,915	8,688	317.18	84	3.07
29	263,967	8,274	313.45	73	2.77

TABLE 6A Crash Rates for Florida Resident Drivers
In All Crashes for a Selected Age Group (70 - 85+)

Age of Driver	Driver Licenses Issued	Drivers in All Crashes	Rate Per 10,000 Licensed Drivers	Drivers In Fatal Crashes	Rate Per 10,000 Licensed Drivers
70	137,717	2,075	150.67	26	1.89
71	135,149	2,001	148.06	27	2.00
72	131,380	1,955	148.80	36	2.74
73	126,685	1,892	149.35	29	2.29
74	126,415	1,775	140.41	30	2.37
75	117,197	1,745	148.89	34	2.90
76	112,610	1,666	147.94	23	2.04
77	108,889	1,574	144.55	24	2.20
78	99,922	1,456	145.71	27	2.70
79	85,074	1,261	148.22	21	2.47
80	83,084	1,212	145.88	20	2.41
81	71,418	1,133	158.64	25	3.50
82	64,687	999	154.44	31	4.79
83	55,735	900	161.48	16	2.87
84	51,067	795	155.68	25	4.90
85 and Over	189,724	3,298	173.83	89	4.69

*Does not include drivers of bicycles, mopeds, ATVs, and trains "in all crashes" and "in fatal crashes" categories on both tables.

Selected Age Group*

**Crash Rates for Florida Resident Drinking Drivers
In All Crashes for a Selected Age Group (15 - 29)**

TABLE 7

Age of Driver	Driver Licenses Issued	Drinking Drivers In All Crashes	Rate Per 10,000 Licensed Drivers	Drinking Drivers In Fatal Crashes	Rate Per 10,000 Licensed Drivers
Under 15	0	18		0	
15	55,516	16	2.88	0	0.00
16	117,808	93	7.89	5	0.42
17	144,219	199	13.80	6	0.42
18	164,302	353	21.48	23	1.40
19	176,401	395	22.39	15	0.85
20	185,288	443	23.91	21	1.13
21	199,494	546	27.37	24	1.20
22	203,531	481	23.63	15	0.74
23	207,366	491	23.68	18	0.87
24	218,164	466	21.36	21	0.96
25	227,459	460	20.22	22	0.97
26	243,989	473	19.39	16	0.66
27	264,125	497	18.82	19	0.72
28	273,915	478	17.45	21	0.77
29	263,967	462	17.50	16	0.61

**Crash Rates for Florida Resident Drinking Drivers
In all Crashes for a Selected Age Group (70 - 85+)**

TABLE 7A

Age of Driver	Driver Licenses Issued	Drinking Drivers In All Crashes	Rate Per 10,000 Licensed Drivers	Drinking Drivers In Fatal Crashes	Rate Per 10,000 Licensed Drivers
70	137,717	55	3.99	4	0.29
71	135,149	52	3.85	1	0.07
72	131,380	59	4.49	2	0.15
73	126,685	29	2.29	0	0.00
74	126,415	34	2.69	2	0.16
75	117,197	29	2.47	0	0.00
76	112,610	29	2.58	0	0.00
77	108,889	27	2.48	0	0.00
78	99,922	28	2.80	1	0.10
79	85,074	10	1.18	1	0.12
80	83,084	20	2.41	0	0.00
81	71,418	7	0.98	0	0.00
82	64,687	14	2.16	2	0.31
83	55,735	11	1.97	0	0.00
84	51,067	9	1.76	0	0.00
85 and Over	189,724	59	3.11	2	0.11

*Does not include drivers of bicycles, mopeds, ATVs, and trains "in all crashes" and "in fatal crashes" categories on both tables.

▶ Driver Profile

TABLE 8 Drivers Killed or Injured By Residence and Gender*

Residence	Male		Female		Total Drivers Killed and injured				All Drivers
	Drivers Killed	Drivers Injured	Drivers Killed	Drivers Injured	Drivers Killed	% Killed	Drivers Injured	% Injured	
% County of Crash	1.06	80.09	0.46	85.48	1,242	73.97	131,518	83.47	322,531
% Elsewhere In State	0.28	13.85	0.12	11.19	329	19.59	20,095	12.75	49,761
% Non-Resident of State	0.08	3.76	0.03	2.37	94	5.60	4,966	3.15	14,109
% Foreign	0.004	0.63	0.03	0.28	5	0.30	739	0.47	2,678
% Not Stated	0.009	0.23	0.001	0.08	9	0.54	254	0.16	1,134
Total	1,225	84,300	454	73,272	1,679	100	157,572	100	390,213

* Drivers whose gender was not stated are included in the total column for all drivers.

Regarding gender and residence, a large percentage (73.97) of drivers killed in traffic crashes were from the county in which the crash occurred. Those drivers from elsewhere in the state ranked second (19.59%) behind those residing in the county. Only 5.6 percent of the drivers killed were non-residents of the state. Less than half of one percent of those killed in crashes were foreign drivers visiting Florida. The residences of less than 1 percent of drivers killed were unknown. Injuries followed the same distribution pattern of residence as those killed. In general, more men were involved in injury and fatal crashes than women in all categories of residence with the exception of the county of residence where a larger percentage of women (85.5%) than men (80.1%) were injured.

▶ Driver Profile

TABLE 9 Drivers Involved in Crashes By Age Groups*

Age	All Drivers	% All Drivers	Drivers Killed	% Drivers Killed	Drivers Injured	% Drivers Injured	% Total
15 & Under	2,720	0.70	23	1.37	1,954	1.24	3.31
16	7,928	2.03	24	1.43	3,165	2.01	5.47
17	10,384	2.66	35	2.08	4,087	2.59	7.34
18	12,424	3.18	45	2.68	4,992	3.17	9.03
19	11,387	2.92	45	2.68	4,538	2.88	8.48
20	10,500	2.69	36	2.14	4,223	2.68	7.51
21-24	37,680	9.66	147	8.75	15,138	9.60	28.01
25-34	90,118	23.09	283	16.85	35,776	22.70	62.64
35-44	81,163	20.80	300	17.86	32,384	20.55	59.20
45-54	52,159	13.37	198	11.79	21,379	13.56	38.72
55-64	30,663	7.86	140	8.33	12,374	7.85	24.04
65-74	21,956	5.63	147	8.75	8,961	5.69	20.06
75+	17,140	4.39	243	14.46	7,133	4.53	23.38
Not Stated	3,991	1.02	14	0.83	1,519	0.96	2.82
Total	390,213	100	1,680	100	157,623	100	

* Includes bicycle drivers.

As shown in Table 9 drivers age 15 and under account for less than 1 percent of the total number of drivers in the state, but they constitute 1.37 percent of the drivers killed in traffic crashes. Drivers age 16 through 20 are more likely to be injured than killed in crashes. The fatality for this age group ranges from 1.43 percent to 2.68 percent. While there is a sharp increase in fatalities for the age group 21-54, their injury level remains consistently higher compared to their fatality level. The fatality versus injury level reverses for those 55 years of age and above. That is, this age group is more likely to be killed than injured in traffic crashes. Fatalities for age groups 25-44 and 75 and above remains relatively high compared to other age groups. Of particular interest is the age group 75 and over where they constitute 4.39 percent of the drivers in the state but account for 14.46 percent of drivers killed.

► Persons in Crashes by Age

Florida Traffic
Crash Facts 1998

PERSONS INVOLVED IN CRASHES BY AGE AND GENDER

TABLE 10 Persons Killed*

Age Groups	Total Killed	Drivers			Total Passengers	Pedestrians			Bicyclists		
		Total	Male	Female		Total	Male	Female	Total	Male	Female
0-4	34	0	0	0	22	12	3	9	0	0	0
5-9	41	0	0	0	26	11	6	5	4	3	1
10-14	58	8	8	0	30	17	14	3	3	3	0
15	19	5	4	1	11	0	0	0	3	3	0
16	54	22	13	9	23	7	4	3	2	2	0
17	53	33	23	10	17	1	1	0	2	2	0
18	70	43	32	11	19	6	5	1	2	2	0
19	68	44	28	16	19	4	3	1	1	1	0
20	57	35	27	8	16	5	5	0	1	1	0
21-24	233	147	118	29	60	26	22	4	0	0	0
25-34	432	270	207	63	76	73	58	15	13	12	1
35-44	478	280	196	84	67	111	81	30	20	19	1
45-54	336	183	140	43	52	86	59	26	15	15	0
55-64	238	123	93	30	46	52	38	14	17	15	2
65-74	255	141	84	57	66	42	30	12	6	6	0
75+	410	239	153	86	94	73	50	23	4	3	1
Not Stated	53	10	8	1	17	22	13	9	4	4	0
Total	2,889	1,583	1,134	448	661	548	392	155	97	91	6

TABLE 11 Persons Injured*

Age Groups	Total Injured	Drivers			Total Passengers	Pedestrians			Bicyclists		
		Total	Male	Female		Total	Male	Female	Total	Male	Female
0-4	4,033	0	0	0	3,747	254	159	95	32	22	10
5-9	7,202	14	13	1	6,156	682	446	236	350	256	94
10-14	8,812	283	186	97	6,899	837	521	315	793	611	182
15	3,145	311	191	120	2,453	210	125	84	171	139	32
16	6,211	3,005	1,506	1,499	2,871	175	97	78	160	127	33
17	7,011	3,964	1,948	2,016	2,767	157	95	62	123	98	25
18	7,713	4,868	2,510	2,358	2,562	159	84	75	124	100	24
19	6,931	4,430	2,318	2,111	2,252	141	99	42	108	84	24
20	6,226	4,142	2,160	1,981	1,878	125	80	45	81	60	21
21-24	21,549	14,827	7,765	7,062	5,998	413	268	144	311	241	70
25-34	47,181	35,035	18,320	16,714	10,318	1,087	738	346	741	570	171
35-44	41,901	31,570	16,421	15,148	8,282	1,235	811	422	814	664	149
45-54	28,024	20,910	10,947	9,963	5,853	792	487	303	469	389	80
55-64	17,032	12,130	6,525	5,605	4,135	523	295	227	244	202	42
65-74	13,260	8,808	4,853	3,955	3,850	449	257	192	153	130	23
75+	10,927	7,030	3,930	3,100	3,313	481	214	267	103	90	13
Not Stated	4,705	1,159	650	463	2,832	354	215	138	360	274	86
Total	241,863	152,486	80,243	72,193	76,166	8,074	4,991	3,071	5,137	4,057	1,079

*Persons whose gender was not stated are included in the total columns for both tables. Gender of passengers is not reported.

► Persons in Crashes by Age

Table 10 shows that males are disproportionately represented among bicyclists (93.8%), pedestrians (71.5%), and drivers (71.6%) killed in traffic crashes. Of those killed in these categories, as well as passengers, a high proportion were above 21 years of age. A relatively high proportion of male bicyclists and pedestrians were also among those injured in traffic crashes (Table 11). However, injured drivers are equally distributed among male and female drivers. Again, the majority of bicyclists, pedestrians, and drivers injured are above 21 years of age.



Motorcyclists and Bicyclists Crash Trends

CHART 1

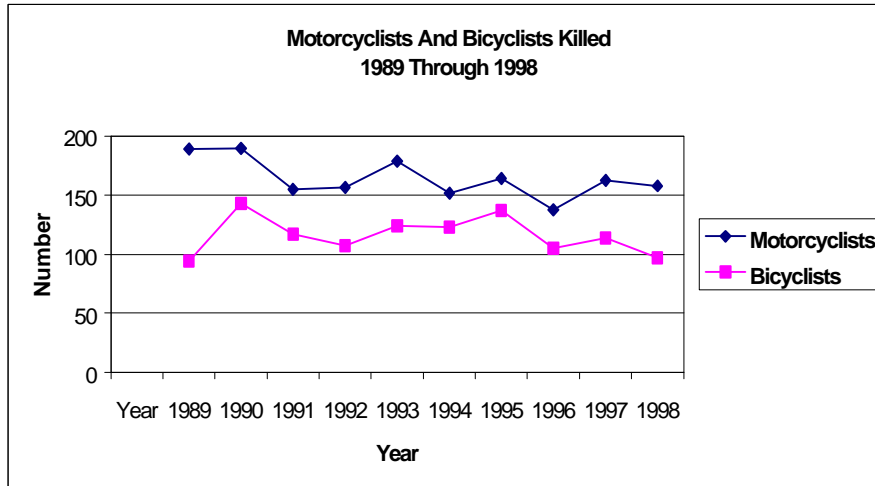
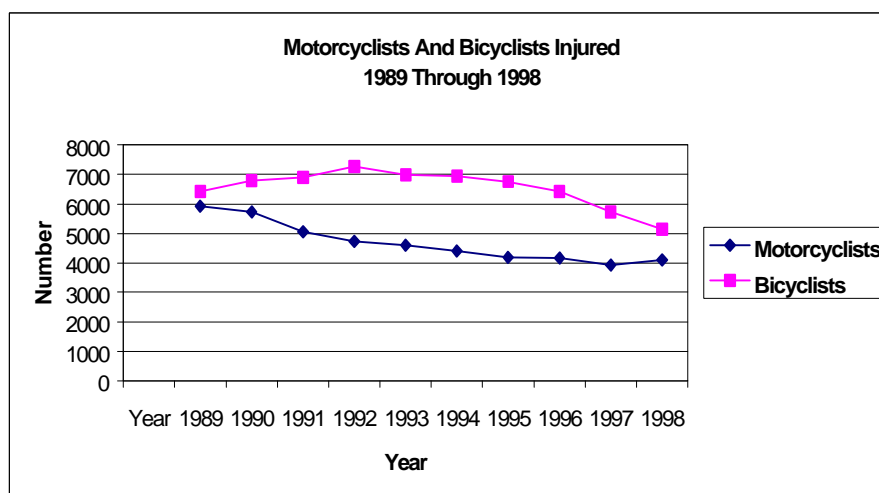


CHART 2



* Passengers are not included in the above charts.

Charts 1 and 2 show a gradual decrease in the number of motorcyclists injured and killed in traffic crashes during the past 10 years. Trend analysis of the data contained in the two charts shows that the drop in the number of motorcyclists killed is faster than the decline in the number of bicyclists killed. A similar pattern is observed for motorcyclists and bicyclists injured in traffic crashes. That is, the number of injured motorcyclists has dropped at a faster pace than the number of injured bicyclists between 1989 and 1998.

▶ Pedestrian Fatality Trend

Florida Traffic
Crash Facts 1998

CHART 3

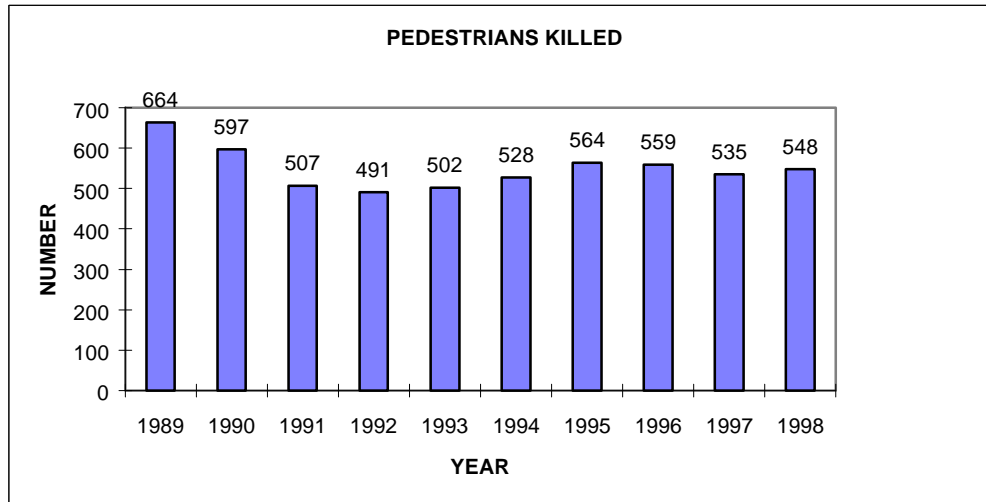
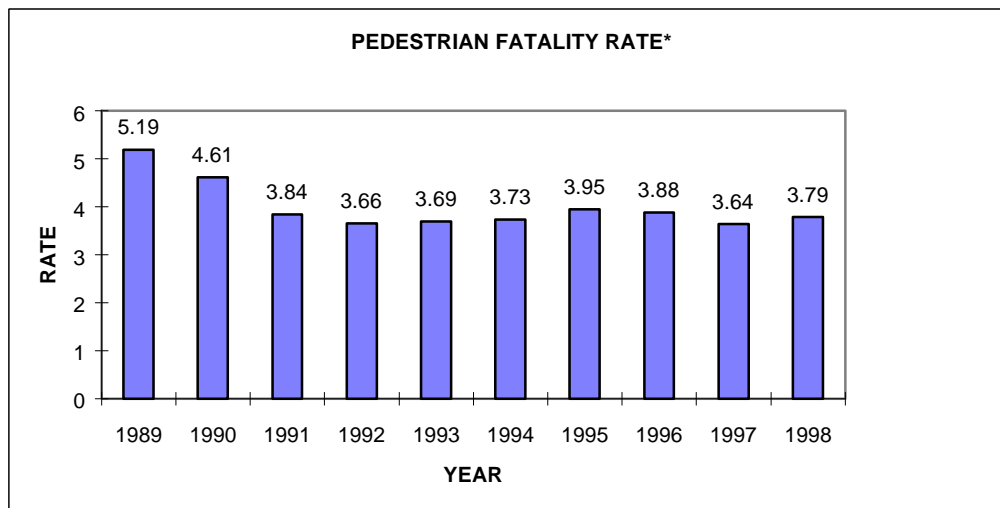


CHART 4



* Florida pedestrian fatality rate per 100,000 residents.

► Pedestrian Behavior

Florida Traffic
Crash Facts 1998

TABLE 12 Pedestrians Killed in Crashes By Age and Type of Actions

Age Group	Pedestrian Actions												% Total	Total Killed
	Cross Not at Inter-section	%	Cross at Inter-section	%	Walking Along Rd. With Traffic	%	Walk Along Rd. Against Traffic	%	Standing or Playing in Road	%	Other	%		
0-4	7	58.3	0	0	0	0	0	0	0	0	5	41.7	100	12
5-9	6	54.5	1	9.09	0	0	1	9.09	1	9.09	2	18.2	100	11
10-14	4	23.5	3	17.6	2	11.8	0	0	4	23.5	4	23.5	100	17
15-19	8	44.4	2	11.1	1	5.56	0	0	2	11.1	5	27.8	100	18
20-24	13	41.9	0	0	7	22.6	0	0	1	3.23	10	32.3	100	31
25-34	30	41.1	7	9.59	6	8.22	2	2.74	4	5.48	24	32.9	100	73
35-44	49	44.1	11	9.91	10	9.01	2	1.8	13	11.7	26	23.4	100	111
45-54	42	48.8	9	10.5	6	6.98	0	0	5	5.81	24	27.9	100	86
55-64	29	55.8	7	13.5	1	1.92	0	0	3	5.77	12	23.1	100	52
65+	66	57.4	21	18.3	3	2.61	1	0.87	0	0	24	20.9	100	115
Not Stated	8	36.4	5	22.7	1	4.55	0	0	2	9.09	6	27.3	100	22
Total	262		66		37		6		35		142			548

As Table 12 shows, among the pedestrians “not crossing at intersection,” age groups under 10 and 45-65 constitute the highest percentage killed. A similar fatality pattern exists for those pedestrians “crossing at intersection.” That is, pedestrians under 15 years of age and those 45-65 constituted a higher percentage of those killed compared to the remainder of the age groups in that category. While it is safer to walk against oncoming traffic, a large percentage of pedestrians ages 20-54 years were killed by walking along the road with traffic. Furthermore, pedestrians under 15 years of age were the most likely to be killed while standing or playing in roadways.

TABLE 13 Pedestrians Injured in Crashes By Age and Type of Actions

Age Group	Pedestrian Actions												% Total	Total Killed
	Cross Not at Inter-section	%	Cross at Inter-section	%	Walking Along Rd. With Traffic	%	Walk Along Rd. Against Traffic	%	Standing or Playing in Road	%	Other	%		
0-4	106	41.7	13	5.12	4	1.57	1	0.39	28	11	102	40.2	100	254
5-9	341	50	61	8.94	9	1.32	3	0.44	75	11	193	28.3	100	682
10-14	358	42.8	130	15.5	44	5.26	25	2.99	61	7.29	219	26.2	100	837
15-19	308	36.6	117	13.9	71	8.43	24	2.85	44	5.23	278	33	100	842
20-24	163	30.3	62	11.5	41	7.62	14	2.6	32	5.95	226	42	100	538
25-34	344	31.6	118	10.9	71	6.53	24	2.21	41	3.77	489	45	100	1087
35-44	426	34.5	149	12.1	66	5.34	32	2.59	48	3.89	514	41.6	100	1235
45-54	260	32.8	121	15.3	39	4.92	23	2.9	33	4.17	316	39.9	100	792
55-64	171	32.7	91	17.4	14	2.68	10	1.91	11	2.1	226	43.2	100	523
65+	282	30.3	189	20.3	38	4.09	26	2.8	29	3.12	366	39.4	100	930
Not Stated	101	28.5	32	9.04	11	3.11	2	0.56	26	7.34	182	51.4	100	354
Total	2860		1083		408		184		428		3111			8074

► Pedestrian Behavior

Among the pedestrians injured (Table 13) while “crossing not at intersections,” those under 15 years of age and age group 35-64 stand out with the highest percentage of injuries. For those pedestrians crossing at intersections, the age groups 10-19 and 45-65 had the highest percentage of injuries. Pedestrians in the 10-44 age groups, walking along the road with traffic, had the highest percentage of injuries compared to those below and above their age group. Pedestrians walking along the road against traffic had the lowest percentage of injuries (Table 13) and fatalities (Table 12) compared to pedestrians in other pedestrian action categories. The percentage of fatalities and injuries were highest for the age group representing 15 years of age and under for the category “standing or playing in road.” With few exceptions, the majority of pedestrians in the “Other” categories (Tables 12 and 13) are adults between 20-44 years of age which include those “Crossing at Mid-block Crosswalk,” “Working on Vehicle in Road,” “Standing in Pedestrian Island,” and “Other Working in Road.” Due to the collapsing of several categories into one “Other” category, the percentages are relatively high compared with pedestrian actions not included in the “Other” category. With regard to alcohol involvement, the majority of pedestrian involvement is between the 20-24 and 55-59 age groups with the heavy concentration in the 25-49 age group (Table 14). Alcohol involvement drops to 6.84 percent for age group 65-69 ending with 1.96 percent for the 85-89 age group. The 5.71 percent alcohol involvement for 90-94 age group appears to be an aberration.

**Pedestrians in Crashes By Age
TABLE 14 And Percent Drinking**

Age Group	Number Pedestrians	Number Drinking	Percent Drinking
0-4	276	4	1.45
5-9	724	6	0.83
10-14	899	14	1.56
15-19	926	51	5.51
20-24	619	78	12.60
25-29	566	98	17.31
30-34	673	133	19.76
35-39	744	153	20.56
40-44	681	144	21.15
45-49	542	111	20.48
50-54	381	52	13.65
55-59	339	42	12.39
60-64	270	29	10.74
65-69	234	16	6.84
70-74	275	16	5.82
75-79	236	9	3.81
80-84	185	3	1.62
85-89	102	2	1.96
90-94	35	2	5.71
95-99	9	0	0.00
Unknown	444	38	8.56
Total	9,160	1,001	

**Pedestrians in Crashes By Injury Severity
TABLE 15 And Percent Drinking**

Injury Severity	Number Pedestrians	Number Drinking	Percent Drinking
Unknown	103	4	3.88
No Injury	418	56	13.40
Possible Injury	2,420	156	6.45
Non-Incapacit. Injury	3,490	300	8.60
Incapacitating Injury	2,164	331	15.30
Fatal Injury	548	150	27.37
Non- Traffic Fatality	17	4	23.53
Total	9,160	1,001	10.93

Truck Passengers

Florida Traffic
Crash Facts 1998

Passengers Riding in Beds of Light (pickup) Trucks

TABLE 16 By Numbers Killed or Injured

Injured/Killed	0-4	5-9	10-14	15-19	21-24	25-29	30-34	35-39	40-44	45-49	50-54	55-59	60-64	65-69	70-74	75 and Over	Not Stated	Total
Injured	4	31	59	105	45	29	28	16	13	14	3	5	1	0	0	1	19	373
%	100	100	98.3	97.2	97.8	100	97	89	93	100	100	100	33	0	0	50	100	
Killed	0	0	1	3	1	0	1	2	1	0	0	0	2	0	0	1	0	12
%	0	0	1.67	2.78	2.17	0	3.4	11	7.1	0	0	0	67	0	0	50	0	
% TOTAL	100	100	100	100	100	100	100	100	100	100	100	100	100	0	0	100	100	
Total	4	31	60	108	46	29	29	18	14	14	3	5	3	0	0	2	19	385

Passengers Riding in Beds of All Types of Trucks

TABLE 16A By Numbers Killed or Injured

Injured/Killed	0-4	5-9	10-14	15-19	21-24	25-29	30-34	35-39	40-44	45-49	50-54	55-59	60-64	65-69	70-74	75 and Over	Not Stated	Total
Injured	4	32	63	115	50	37	40	20	17	17	7	7	1	1	0	1	19	431
%	100	100	98.4	97.5	98	100	98	91	94	100	100	100	33	100	0	50	100	
Killed	0	0	1	3	1	0	1	2	1	0	0	0	2	0	0	1	0	12
%	0	0	1.56	2.54	1.96	0	2.4	9.1	5.6	0	0	0	67	0	0	50	0	
% Total	100	100	100	100	100	100	100	100	100	100	100	100	100	100	0	100	100	
Total	4	32	64	118	51	37	41	22	18	17	7	7	3	1	0	2	19	443

The majority of passengers riding in the beds of trucks were between 5 and 44 years of age (Table 16). Of the total 385 passengers reported riding in the beds of trucks, 3.12 percent were killed as opposed to 96.88 percent being injured. With the exception of age group 60-75 and above, those riding in the beds of light trucks had relatively equal chances of being injured regardless of age. 66.7 percent of those killed were between 15 and 44 years of age. The distribution of injuries and fatalities for passengers riding in beds of all types of trucks follows the same pattern as those riding in the beds of light (pickup) trucks (Table 16A).



Crash Conditions/Causal Factors/Environment

Florida Traffic
Crash Facts 1998

FLORIDA MOTORING ENVIRONMENT

TABLE 17

YEAR	LICENSED DRIVERS	REGISTERED VEHICLES++	VEHICLE MILES*	NON-FATAL			MILEAGE DEATH RATE**
				CRASHES	INJURIES	DEATHS	
1979	7,341,081	7,724,148	74,651	343,542	190,697	2,635	3.5
1980	7,809,423	7,797,375	75,281	357,720	201,385	2,879	3.8
1981	8,222,403	7,887,881	76,146	368,766	205,437	3,119	4.1
1982	8,598,019	8,622,549	79,497	361,312	195,834	2,710	3.4
1983	8,987,493	9,064,490	81,775	384,614	194,791	2,729	3.3
1984	9,442,763	9,444,964	85,241	237,511	202,889	2,856	3.4
1985	9,630,975	10,827,693	88,057	250,412	216,596	2,870	3.3
1986	9,924,110	11,651,253	87,325	242,381	219,352	2,874	3.3
1987	10,241,063	11,738,273	92,865	240,429	215,886	2,891	3.1
1988	10,648,019	11,997,948	105,030	256,543	230,738	3,152	3.0
1989	11,109,288	12,276,272	108,876	252,439	230,060	3,033	2.8
1990	11,612,402	12,465,790	109,997	216,245	214,208	2,951	2.7
1991	12,170,821	11,184,146+	113,484	195,312	195,122	2,523	2.2
1992	11,550,126	11,205,298	114,000	196,176	205,432	2,480	2.2
1993	11,767,409	11,159,938	119,768	199,039	212,497	2,719	2.3
1994	11,992,578	11,393,982	120,929	206,183	223,458	2,722	2.3
1995	12,019,156	11,557,811	127,800	228,589	233,900	2,847	2.2
1996	12,343,598	12,003,930	129,637	241,377	243,320	2,806	2.2
1997	12,691,835	12,170,375	133,276	240,639	240,001	2,811	2.1
1998	13,012,132	11,277,808	136,680	245,440	241,863	2,889	2.1

*IN MILLIONS

**PER 100 MILLION VEHICLE MILES OF TRAVEL

+DECREASE REFLECTS CHANGE IN ACCOUNTING METHOD

++ DOES NOT INCLUDE COUNT OF TRAILERS WITH TAGS FOR 1998.

► Holiday Traffic Fatalities

Florida Traffic
Crash Facts 1998

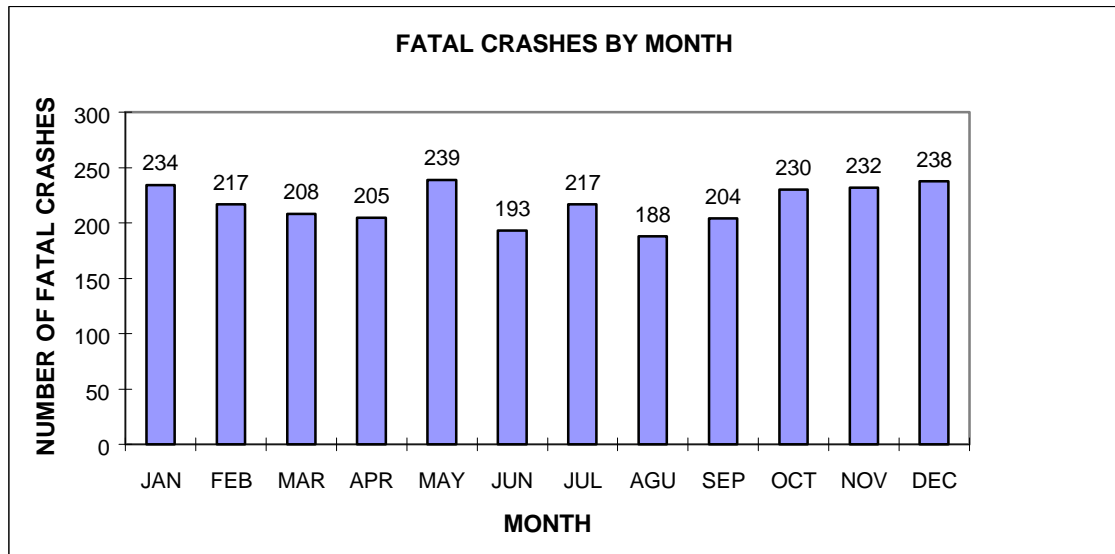
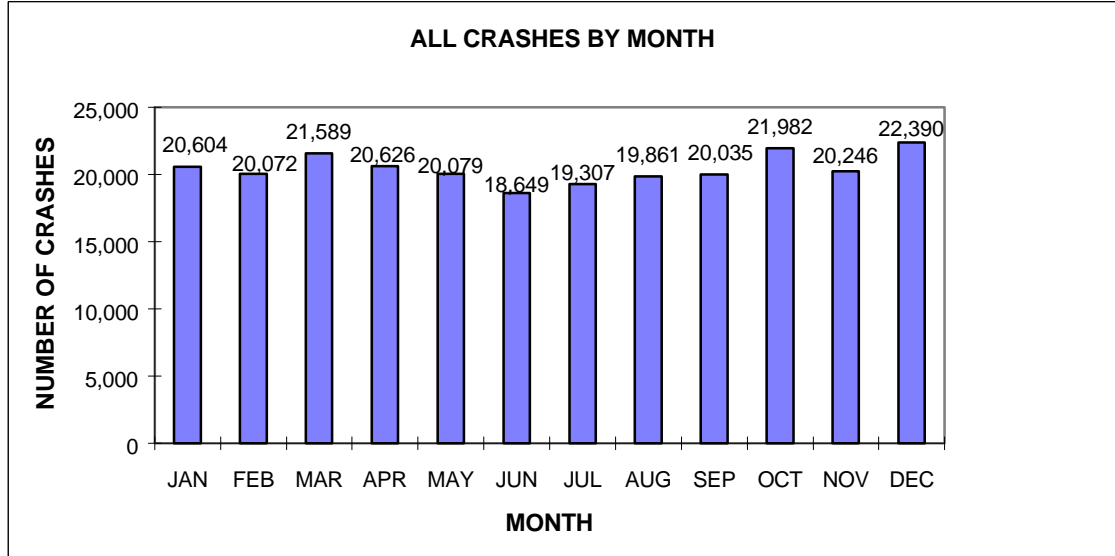
TABLE 18

HOLIDAY PERIOD		1995**	1996	1997	1998
New Year	Hours	78	96	48	48
	Fatalities	21	46	18	16
	Rate*	.27	.48	.38	.33
	Alcohol Related Fatalities	9	16	11	11
Memorial Day	Hours	96	96	96	96
	Fatalities	35	30	35	37
	Rate*	.36	.31	.36	.39
	Alcohol Related Fatalities	17	10	17	17
Independence Day	Hours	120	120	96	72
	Fatalities	49	41	27	19
	Rate*	.41	.34	.28	.26
	Alcohol Related Fatalities	18	11	10	6
Labor Day	Hours	96	96	96	96
	Fatalities	34	22	26	37
	Rate*	.35	.23	.27	.39
	Alcohol Related Fatalities	15	11	9	12
Thanksgiving	Hours	120	120	120	120
	Fatalities	42	42	45	36
	Rate*	.35	.35	.38	.30
	Alcohol Related Fatalities	16	16	15	16
Christmas	Hours	96	48	48	96
	Fatalities	29	20	22	40
	Rate*	.30	.42	.46	.42
	Alcohol Related Fatalities	9	5	11	19
All Days in Year	Hours	8,760	8,784	8,760	8,760
	Fatalities	2,847	2,806	2,811	2,889
	Rate*	.33	.32	.32	.33
	Alcohol Related Fatalities	1,073	944	926	862

*FATALITIES PER HOUR

**AFTER NEW YEAR 1995, HOLIDAY PERIODS BEGIN WITH A FULL DAY. PREVIOUS YEARS' HOLIDAY PERIODS BEGAN 6:00PM THE FIRST DAY.

Traffic Crashes by Month





Traffic Crashes by Day of Week/Time of Day

Florida Traffic
Crash Facts

1998

TABLE 19
Motor Vehicle Crashes by
Day of Week and Time of Day

Time of Crash Hour Beginning	Total		Monday		Tuesday		Wednesday		Thursday		Friday		Saturday		Sunday		
	All	Fatal	All	Fatal	All	Fatal	All	Fatal	All	Fatal	All	Fatal	All	Fatal	All	Fatal	
Before noon	Midnight	5,165	113	554	13	427	8	486	11	560	9	665	15	1,266	35	1,207	22
	1:00	4,513	91	428	11	359	5	397	5	504	11	574	10	1,133	28	1,118	21
	2:00	4,388	91	399	10	336	6	389	11	457	10	552	9	1,173	27	1,082	18
	3:00	3,131	58	271	7	231	4	245	8	330	6	391	6	810	15	853	12
	4:00	2,356	54	219	7	191	6	199	3	272	5	289	9	574	13	612	11
	5:00	2,449	62	307	7	257	5	279	6	321	14	350	10	507	9	428	11
	6:00	5,274	100	848	12	839	18	930	15	899	13	863	18	484	16	411	8
	7:00	10,097	87	1788	8	1881	16	1,867	12	1,790	17	1,674	17	658	7	439	10
	8:00	10,576	68	1806	10	1939	12	1,896	12	1,828	12	1,685	8	876	9	546	5
	9:00	8,937	88	1427	12	1433	14	1,419	16	1,383	13	1,381	12	1,178	14	716	7
	10:00	9,844	86	1524	12	1455	9	1,441	13	1,449	13	1,537	12	1,487	15	951	12
11:00	11,494	86	1638	10	1680	5	1,699	15	1,643	17	1,851	13	1,911	17	1,072	9	
After noon	Noon	14,198	98	2063	14	2034	9	2,029	16	2,131	12	2,282	17	2,085	16	1,574	14
	1:00	14,414	113	2071	16	2069	15	2,051	13	2,155	18	2,306	19	2,154	13	1,608	19
	2:00	15,963	106	2376	20	2410	16	2,402	11	2,419	18	2,687	16	2,106	17	1,563	8
	3:00	18,462	125	2859	16	2836	16	2,756	17	2,849	16	3,302	19	2,122	21	1,738	20
	4:00	19,063	147	2925	24	2879	18	3,009	21	2,909	19	3,424	19	2,182	27	1,735	19
	5:00	19,844	125	3125	15	3187	20	3,110	17	3,064	22	3,558	15	2,015	17	1,785	19
	6:00	15,773	180	2262	26	2388	27	2,345	17	2,292	26	2,690	34	1,977	19	1,819	31
	7:00	11,831	133	1563	21	1568	16	1,607	21	1,595	18	2,028	20	1,846	20	1,624	17
	8:00	9,678	167	1235	12	1205	17	1,286	20	1,359	29	1,688	33	1,594	31	1,311	25
	9:00	9,268	143	1121	22	1152	19	1,227	14	1,281	16	1,731	26	1,567	20	1,189	26
	10:00	8,100	135	842	18	890	9	981	13	1,068	27	1,667	23	1,629	28	1,023	17
	11:00	6,870	127	696	11	707	15	786	13	882	18	1,508	37	1,461	23	830	10
	Not Stated	3,752	22	512	0	524	0	471	4	530	5	491	2	633	4	591	7
Total	245,440	2,605	34,859	334	34,877	305	35,307	324	35,970	384	41,174	419	35,428	461	27,825	378	

▶ Contributing Causes

Florida Traffic
Crash Facts 1998

Actions Attributed to Drivers Involved in Crashes By

TABLE 20 Results (Fatal or Injury) and By Property Damage*

Crashes	Driver Actions											Total
	Speed Too Fast	Failed/Yield Right-of-Way	Disregard Stop Sign	Disregard Other Traffic Control	Drove Left of Center	Improper Over-taking	Follow Too Closely	Alcohol Under Influence	Careless Driving	Mechanical Defect	Other	
Fatal Crashes	478	639	85	136	149	71	10	229	823	23	844	3,487
% Fatal Crashes	6.47	1.42	2.26	1.42	8.41	1.00	0.14	2.81	1.11	1.00	2.00	
Injury Crashes	5,396	34,735	2,899	7,587	1,259	5,098	5,508	4,420	56,330	1,594	30,998	155,824
% Injury Crashes	72.99	77.35	77.06	79.07	71.05	72.09	74.49	54.25	75.93	69.24	73.35	
Property Damage Crashes	1,519	9,532	778	1,872	364	1,903	1,876	3,498	17,035	685	10,421	49,483
% Property Damage Crashes	20.55	21.23	20.68	19.51	20.54	26.91	25.37	42.94	22.96	29.76	24.66	
Total	7,393	44,906	3,762	9,595	1,772	7,072	7,394	8,147	74,188	2,302	42,263	208,794
% Total	100	100	100	100	100	100	100	100	100	100	100	

* This table lists contributing causes reported by the investigating officer for drivers in traffic crashes. There can be up to three contributing causes per driver.

Environmental Causes

TABLE 21 Lighting Conditions at the Time of Crash

Lighting Conditions	All Crashes	Fatal Crashes	Injury Crashes	Property Damage
Daylight	163,291	1,213	105,703	56,375
Dusk	6,731	58	4,130	2,543
Dawn	3,027	63	1,865	1,099
Darkness	67,976	1,254	36,327	30,395
Unknown	4,415	17	1,290	3,108
Total	245,440	2,605	149,315	93,520

TABLE 22 Road Surface Conditions at the Time of Crash

Surface Conditions	All Crashes	Fatal Crashes	Injury Crashes	Property Damage
Dry	206,701	2,273	125,648	78,780
Wet	34,033	310	21,471	12,252
Slippery	2,119	13	1,412	694
Icy	106	1	56	49
Other	2,481	8	728	1,745
Total	245,440	2,605	149,315	93,520

TABLE 23 Type Of Vehicle Collision*

Type of Collision	All Crashes	Fatal Crashes	Injury Crashes	Property Damage
Head On	4,162	167	2,884	1,111
Rear End	69,152	193	49,295	19,664
Angle	49,078	542	32,873	15,663
Sideswipe	14,522	55	5,775	8,692
Backed Into	6,219	0	1,309	4,910
Left/Right Turn	28,241	260	19,574	8,407
Other	16,805	98	5,437	11,270
Total	188,179	1,315	117,147	69,717

* Type of collision applies to the first two vehicles in crashes involving two or more vehicles.

▶ County/City Data

Florida Traffic
Crash Facts 1 9 9 8





County Data

Florida Traffic Crash Facts 1998

TABLE 24 5 YEAR CRASH HISTORY BY COUNTY

COUNTY	1994	1995	1996	1997	1998	COUNTY	1994	1995	1996	1997	1998
ALACHUA	3,349	3,414	3,671	4,074	4,281	LEVY	290	303	370	374	409
BAKER	163	226	255	242	192	LIBERTY	62	64	64	65	60
BAY	1,777	2,085	2,238	2,224	2,306	MADISON	192	217	221	232	266
BRADFORD	367	369	324	299	261	MANATEE	3,009	3,190	3,362	3,366	3,533
BREVARD	4,700	4,650	4,917	4,747	4,484	MARION	2,725	2,967	2,842	2,694	2,855
BROWARD	25,374	25,958	27,508	26,849	27,464	MARTIN	1,316	1,455	1,511	1,498	1,544
CALHOUN	97	102	119	123	105	MIAMI-DADE	36,053	43,233	48,634	47,794	49,421
CHARLOTTE	1,436	1,358	1,497	1,445	1,682	MONROE	1,165	1,123	1,185	1,250	1,275
CITRUS	951	1,060	1,121	1,014	994	NASSAU	398	401	443	452	480
CLAY	803	1,006	1,113	995	1,093	OKALOOSA	1,626	1,671	1,793	1,608	1,538
COLLIER	2,321	2,392	2,500	2,516	2,512	OKEECHOBEE	332	365	427	342	442
COLUMBIA	568	575	710	736	738	ORANGE	12,735	12,870	14,398	15,920	16,668
DE SOTO	297	315	313	301	344	OSCEOLA	1,719	1,865	2,027	2,116	2,353
DIXIE	90	145	148	161	135	PALM BEACH	14,448	14,929	14,756	13,921	14,466
DUVAL	12,233	13,053	13,005	13,273	13,332	PASCO	2,813	3,344	4,088	3,833	4,147
ESCAMBIA	3,612	3,985	4,195	4,330	4,097	PINELLAS	10,971	11,919	12,359	12,529	13,192
FLAGLER	338	360	385	382	367	POLK	5,822	6,735	7,357	7,394	7,697
FRANKLIN	81	108	126	117	126	PUTNAM	885	869	949	1,039	1,005
GADSDEN	613	607	727	706	671	ST. JOHNS	1,321	1,297	1,448	1,427	1,557
GILCHRIST	78	90	115	117	103	ST. LUCIE	2,115	2,200	2,251	2,091	2,030
GLADES	115	93	95	108	132	SANTA ROSA	960	1,036	1,134	1,148	1,232
GULF	71	88	82	182	136	SARASOTA	3,043	3,856	4,670	4,481	4,588
HAMILTON	139	126	144	202	167	SEMINOLE	3,020	3,326	3,616	3,458	3,655
HARDEE	305	266	276	218	303	SUMTER	439	394	429	461	537
HENDRY	363	330	340	346	377	SUWANNEE	298	296	380	465	460
HERNANDO	1,005	993	1,121	1,099	1,154	TAYLOR	291	271	263	277	258
HIGHLANDS	660	769	680	637	620	UNION	83	87	91	72	93
HILLSBOROUGH	16,259	21,071	21,445	21,335	19,286	VOLUSIA	5,987	6,016	6,171	6,403	6,307
HOLMES	151	151	150	123	146	WAKULLA	163	194	219	193	237
INDIAN RIVER	1,091	1,191	1,215	1,215	1,147	WALTON	389	384	478	526	504
JACKSON	482	458	535	458	516	WASHINGTON	146	182	202	201	228
JEFFERSON	167	178	175	154	175	UNKNOWN	204	144	283	454	243
LAFAYETTE	31	46	60	47	68	STATEWIDE	206,183	228,589	241,377	240,639	245,440
LAKE	1,710	1,677	1,828	1,835	2,093						
LEE	4,855	7,170	4,810	4,688	4,691						
LEON	4,511	4,921	5,013	5,257	5,862						


County Data
**Florida Traffic
Crash Facts 1998**
TABLE 25 5 YEAR ALCOHOL-RELATED CRASH HISTORY BY COUNTY

COUNTY	1994	1995	1996	1997	1998	COUNTY	1994	1995	1996	1997	1998
ALACHUA	368	342	368	406	393	LEVY	55	55	68	58	63
BAKER	43	45	44	36	39	LIBERTY	14	19	15	18	13
BAY	396	404	382	403	367	MADISON	25	31	15	23	21
BRADFORD	66	68	52	44	48	MANATEE	448	469	487	513	480
BREVARD	820	776	803	683	660	MARION	399	346	319	293	265
BROWARD	2,262	2,291	2,243	2,161	2,021	MARTIN	251	268	237	246	224
CALHOUN	32	22	29	31	24	MIAMI-DADE	2,496	2,577	2,661	2,429	2,193
CHARLOTTE	214	165	183	162	191	MONROE	262	232	224	233	244
CITRUS	186	186	166	167	159	NASSAU	78	82	85	68	71
CLAY	140	170	169	150	162	OKALOOSA	322	328	380	300	283
COLLIER	418	371	374	384	384	OKEECHOBEE	68	80	71	60	81
COLUMBIA	129	111	127	114	106	ORANGE	1,525	1,402	1,421	1,462	1,407
DE SOTO	64	60	64	56	46	OSCEOLA	248	235	241	250	222
DIXIE	19	29	28	28	39	PALM BEACH	1,614	1,575	1,557	1,365	1,315
DUVAL	1,175	1,231	1,291	1,208	1,155	PASCO	413	417	493	515	430
ESCAMBIA	736	669	664	606	574	PINELLAS	1,557	1,504	1,420	1,545	1,416
FLAGLER	55	65	60	53	51	POLK	756	721	800	824	855
FRANKLIN	26	27	35	30	25	PUTNAM	146	177	152	175	149
GADSDEN	135	117	121	108	112	ST. JOHNS	231	218	229	213	223
GILCHRIST	17	20	21	18	19	ST. LUCIE	249	282	293	245	219
GLADES	27	23	19	23	17	SANTA ROSA	207	182	202	165	171
GULF	16	25	18	33	26	SARASOTA	542	551	587	569	545
HAMILTON	36	28	18	28	28	SEMINOLE	409	357	394	402	385
HARDEE	42	34	33	24	39	SUMTER	71	50	64	67	71
HENDRY	72	68	65	59	62	SUWANNEE	60	56	66	47	65
HERNANDO	166	143	174	146	174	TAYLOR	60	59	51	45	28
HIGHLANDS	93	102	90	95	73	UNION	25	17	15	12	15
HILLSBOROUGH	1,735	2,070	2,068	2,071	1,746	VOLUSIA	890	770	772	788	664
HOLMES	44	25	22	25	29	WAKULLA	49	55	57	40	43
INDIAN RIVER	142	165	153	167	127	WALTON	106	81	108	148	128
JACKSON	87	74	84	66	66	WASHINGTON	33	23	23	34	41
JEFFERSON	32	29	34	17	19	UNKNOWN	23	15	28	47	20
LAFAYETTE	7	12	12	7	17	STATEWIDE	24,987	24,873	24,875	24,119	22,741
LAKE	249	249	231	221	269						
LEE	778	926	649	633	614						
LEON	528	497	446	457	510						



County Data

Florida Traffic Crash Facts 1998

TABLE 26 5 YEAR FATALITY HISTORY BY COUNTY

COUNTY	1994	1995	1996	1997	1998	COUNTY	1994	1995	1996	1997	1998
ALACHUA	42	31	45	43	52	LEVY	6	5	9	8	10
BAKER	5	5	8	11	6	LIBERTY	4	1	1	2	1
BAY	26	33	32	34	34	MADISON	4	17	5	8	12
BRADFORD	7	7	4	6	16	MANATEE	48	51	55	64	65
BREVARD	62	87	74	84	69	MARION	56	79	49	76	59
BROWARD	215	210	210	227	231	MARTIN	32	26	20	28	17
CALHOUN	9	3	9	2	5	MIAMI-DADE	307	333	326	309	300
CHARLOTTE	18	23	26	26	18	MONROE	26	22	21	17	27
CITRUS	21	35	22	23	36	NASSAU	14	18	13	17	28
CLAY	20	20	20	13	23	OKALOOSA	21	28	29	17	25
COLLIER	35	49	44	55	52	OKEECHOBEE	11	6	12	22	15
COLUMBIA	22	14	27	26	18	ORANGE	120	144	140	126	180
DE SOTO	11	12	9	7	4	OSCEOLA	44	40	43	49	55
DIXIE	6	2	5	9	6	PALM BEACH	200	200	199	180	177
DUVAL	111	117	122	113	101	PASCO	74	67	60	63	71
ESCAMBIA	55	47	40	47	54	PINELLAS	106	122	128	128	124
FLAGLER	7	11	10	13	17	POLK	90	129	103	102	108
FRANKLIN	2	2	1	5	3	PUTNAM	25	21	17	29	21
GADSDEN	16	14	17	22	18	ST. JOHNS	12	20	22	23	30
GILCHRIST	3	3	3	3	4	ST. LUCIE	43	40	43	29	22
GLADES	4	6	14	7	8	SANTA ROSA	16	27	18	26	16
GULF	3	2	3	4	4	SARASOTA	44	46	49	42	51
HAMILTON	9	8	5	11	3	SEMINOLE	36	40	30	41	39
HARDEE	7	8	11	2	10	SUMTER	8	8	24	12	20
HENDRY	19	18	15	15	15	SUWANNEE	17	15	15	13	9
HERNANDO	35	17	39	23	21	TAYLOR	6	9	4	7	9
HIGHLANDS	19	30	20	23	28	UNION	4	1	1	1	2
HILLSBOROUGH	198	203	188	190	208	VOLUSIA	108	80	112	86	86
HOLMES	9	8	5	7	8	WAKULLA	7	7	6	8	8
INDIAN RIVER	19	25	24	25	25	WALTON	11	14	8	21	16
JACKSON	14	12	17	14	25	WASHINGTON	6	9	7	5	10
JEFFERSON	7	6	14	1	7	UNKNOWN	0	0	1	5	0
LAFAYETTE	4	0	5	0	2						
LAKE	41	44	39	37	50						
LEE	98	70	78	89	76	STATEWIDE	2,722	2,847	2,806	2,811	2,889
LEON	37	40	31	30	19						


County Data
**Florida Traffic
Crash Facts 1998**
TABLE 27 5 YEAR ALCOHOL-RELATED FATALITY HISTORY BY COUNTY

COUNTY	1994	1995	1996	1997	1998	COUNTY	1994	1995	1996	1997	1998
ALACHUA	19	15	16	20	22	LEVY	2	4	4	4	5
BAKER	4	5	0	5	2	LIBERTY	3	1	1	2	0
BAY	9	20	12	11	14	MADISON	3	4	0	1	2
BRADFORD	2	3	3	2	11	MANATEE	20	15	21	32	17
BREVARD	25	36	34	30	25	MARION	23	35	19	32	19
BROWARD	55	55	54	62	44	MARTIN	12	12	3	5	5
CALHOUN	3	3	7	0	3	MIAMI-DADE	71	82	56	59	60
CHARLOTTE	5	8	8	5	2	MONROE	15	13	9	12	5
CITRUS	11	10	8	14	10	NASSAU	1	8	7	8	6
CLAY	14	11	8	4	11	OKALOOSA	10	12	14	5	9
COLLIER	9	16	24	16	12	OKEECHOBEE	4	5	5	12	8
COLUMBIA	8	3	14	11	6	ORANGE	51	55	57	43	67
DE SOTO	5	4	7	3	0	OSCEOLA	18	25	16	15	18
DIXIE	4	1	3	4	3	PALM BEACH	72	66	48	56	57
DUVAL	35	34	40	23	33	PASCO	21	29	23	30	24
ESCAMBIA	25	22	14	22	19	PINELLAS	33	41	31	39	34
FLAGLER	2	3	4	5	7	POLK	25	53	39	39	27
FRANKLIN	1	2	1	3	0	PUTNAM	15	13	7	17	6
GADSDEN	8	11	11	8	7	ST. JOHNS	4	9	8	10	11
GILCHRIST	0	1	1	1	2	ST. LUCIE	8	17	19	9	11
GLADES	1	5	6	4	4	SANTA ROSA	8	15	6	16	8
GULF	2	1	2	1	1	SARASOTA	18	21	19	12	12
HAMILTON	1	5	0	3	2	SEMINOLE	17	18	10	10	13
HARDEE	3	4	3	0	1	SUMTER	4	3	5	4	4
HENDRY	10	8	4	8	5	SUWANNEE	4	7	6	5	1
HERNANDO	12	5	14	8	2	TAYLOR	4	7	1	6	2
HIGHLANDS	6	7	4	11	11	UNION	1	0	1	0	0
HILLSBOROUGH	80	71	64	46	63	VOLUSIA	43	35	43	34	27
HOLMES	5	2	1	1	4	WAKULLA	4	7	2	4	5
INDIAN RIVER	2	15	8	8	2	WALTON	2	4	3	9	7
JACKSON	5	7	6	6	8	WASHINGTON	3	3	4	3	5
JEFFERSON	5	1	8	0	1						
LAFAYETTE	1	0	1	0	2	UNKNOWN	0	0	0	1	0
LAKE	11	11	14	18	15						
LEE	41	33	40	20	26	STATEWIDE	961	1,073	944	926	862
LEON	13	16	13	9	7						



County Data

Florida Traffic Crash Facts 1998

TABLE 28

5 YEAR INJURY HISTORY BY COUNTY

COUNTY	1994	1995	1996	1997	1998	COUNTY	1994	1995	1996	1997	1998
ALACHUA	3,530	3,303	3,304	3,495	3,675	LEVY	406	371	441	432	601
BAKER	201	260	296	228	248	LIBERTY	79	99	70	84	73
BAY	2,139	2,170	2,253	2,279	2,180	MADISON	245	298	267	296	253
BRADFORD	452	352	297	279	298	MANATEE	3,288	3,129	3,127	3,426	3,697
BREVARD	5,661	5,332	5,710	5,283	5,062	MARION	3,792	3,936	3,735	3,391	3,604
BROWARD	25,734	25,308	26,720	26,359	26,474	MARTIN	1,413	1,533	1,468	1,576	1,456
CALHOUN	112	127	173	162	114	MIAMI-DADE	37,879	40,357	43,285	42,865	42,526
CHARLOTTE	1,540	1,427	1,675	1,499	1,627	MONROE	1,271	1,191	1,290	1,270	1,268
CITRUS	1,263	1,388	1,460	1,271	1,025	NASSAU	507	472	471	493	520
CLAY	1,063	1,110	1,222	1,089	1,195	OKALOOSA	2,067	2,002	2,092	1,867	1,565
COLLIER	2,391	2,435	2,511	2,555	2,441	OKEECHOBEE	476	425	463	356	417
COLUMBIA	783	737	968	944	887	ORANGE	15,108	15,047	15,739	17,126	17,675
DE SOTO	398	379	435	358	425	OSCEOLA	2,347	2,302	2,382	2,661	2,867
DIXIE	100	203	181	193	151	PALM BEACH	15,297	15,411	15,150	14,155	15,143
DUVAL	11,435	11,810	11,676	11,953	11,600	PASCO	3,718	4,178	5,116	4,947	5,083
ESCAMBIA	4,557	4,486	4,721	4,701	4,462	PINELLAS	12,521	13,074	13,980	13,995	14,119
FLAGLER	456	461	488	455	427	POLK	6,579	7,176	7,924	7,563	7,807
FRANKLIN	124	126	130	144	141	PUTNAM	1,010	907	974	990	976
GADSDEN	703	716	698	693	759	ST. JOHNS	1,521	1,421	1,542	1,474	1,576
GILCHRIST	122	111	142	123	113	ST. LUCIE	2,521	2,553	2,454	2,281	2,177
GLADES	162	114	126	110	168	SANTA ROSA	1,305	1,369	1,473	1,468	1,549
GULF	83	99	104	189	142	SARASOTA	3,057	3,626	4,550	3,867	4,429
HAMILTON	205	149	213	254	166	SEMINOLE	3,145	3,361	3,701	3,393	3,497
HARDEE	374	347	306	220	358	SUMTER	627	526	567	614	683
HENDRY	493	474	349	384	440	SUWANNEE	395	360	475	516	447
HERNANDO	1,547	1,352	1,436	1,405	1,525	TAYLOR	288	307	247	253	240
HIGHLANDS	870	1,011	947	828	808	UNION	125	105	120	95	126
HILLSBOROUGH	15,938	19,981	20,630	20,424	19,538	VOLUSIA	5,959	5,962	6,048	6,070	5,869
HOLMES	224	222	172	147	199	WAKULLA	226	230	273	198	323
INDIAN RIVER	1,199	1,239	1,342	1,250	1,232	WALTON	532	505	630	671	669
JACKSON	672	648	756	642	709	WASHINGTON	224	288	263	255	299
JEFFERSON	233	245	204	223	227						
LAFAYETTE	51	64	73	57	71	UNKNOWN	170	116	224	389	185
LAKE	1,893	1,865	2,107	2,071	2,150						
LEE	4,982	7,146	4,946	4,662	4,780	STATEWIDE	223,458	233,900	243,320	240,001	241,863
LEON	3,670	4,066	4,008	4,035	4,327						


County Data
**Florida Traffic
Crash Facts 1998**
TABLE 29 5 YEAR ALCOHOL-RELATED INJURY HISTORY BY COUNTY

COUNTY	1994	1995	1996	1997	1998	COUNTY	1994	1995	1996	1997	1998
ALACHUA	343	337	310	328	295	LEVY	65	62	79	69	68
BAKER	57	56	41	34	40	LIBERTY	16	18	15	15	12
BAY	413	355	351	374	309	MADISON	25	48	16	25	16
BRADFORD	96	59	48	49	60	MANATEE	426	379	384	441	416
BREVARD	889	701	781	601	584	MARION	461	375	340	306	253
BROWARD	2,071	2,035	1,940	1,865	1,723	MARTIN	208	208	159	203	176
CALHOUN	28	22	42	36	22	MIAMI-DADE	2,361	2,274	2,346	2,158	1,913
CHARLOTTE	168	122	186	150	168	MONROE	215	198	209	202	174
CITRUS	204	206	169	170	144	NASSAU	73	94	79	55	60
CLAY	137	159	175	137	171	OKALOOSA	287	303	332	280	208
COLLIER	344	347	344	357	285	OKEECHOBEE	53	69	70	56	76
COLUMBIA	159	119	146	100	89	ORANGE	1,326	1,232	1,321	1,370	1,314
DE SOTO	81	63	61	49	52	OSCEOLA	254	196	238	237	221
DIXIE	18	34	28	30	45	PALM BEACH	1,590	1,462	1,434	1,214	1,197
DUVAL	1,083	1,033	1,034	989	862	PASCO	397	411	510	549	451
ESCAMBIA	717	562	613	536	497	PINELLAS	1,472	1,351	1,300	1,411	1,226
FLAGLER	49	83	70	47	56	POLK	769	684	812	730	793
FRANKLIN	26	30	28	42	27	PUTNAM	147	179	151	154	147
GADSDEN	163	136	113	91	137	ST. JOHNS	226	188	217	199	200
GILCHRIST	20	23	23	14	18	ST. LUCIE	256	263	252	257	199
GLADES	35	25	30	14	18	SANTA ROSA	210	177	205	182	158
GULF	14	24	21	35	20	SARASOTA	398	405	473	473	422
HAMILTON	35	17	18	30	33	SEMINOLE	360	289	326	333	311
HARDEE	30	29	31	12	25	SUMTER	51	43	75	60	71
HENDRY	99	62	46	65	79	SUWANNEE	69	55	81	46	56
HERNANDO	175	121	172	135	190	TAYLOR	45	56	51	57	21
HIGHLANDS	99	105	84	110	65	UNION	18	11	11	21	17
HILLSBOROUGH	1,592	1,894	1,905	1,839	1,624	VOLUSIA	809	707	745	713	577
HOLMES	37	37	18	24	43	WAKULLA	59	45	68	46	56
INDIAN RIVER	109	131	123	164	127	WALTON	104	64	102	154	123
JACKSON	98	75	83	81	82	WASHINGTON	44	26	23	33	48
JEFFERSON	33	40	32	22	18						
LAFAYETTE	13	20	12	10	24	UNKNOWN	12	10	16	30	15
LAKE	222	218	221	187	226						
LEE	672	799	603	588	534	STATEWIDE	23,556	22,409	22,744	21,772	20,066
LEON	421	448	402	378	379						


County Data
**Florida Traffic
Crash Facts 1998**
TABLE 30 5 YEAR PROPERTY DAMAGE CRASH HISTORY BY COUNTY

COUNTY	1994	1995	1996	1997	1998	COUNTY	1994	1995	1996	1997	1998
ALACHUA	1,108	1,248	1,425	1,725	1,846	LEVY	63	74	118	128	99
BAKER	38	60	78	91	50	LIBERTY	12	18	18	18	14
BAY	512	691	821	841	971	MADISON	49	37	56	58	85
BRADFORD	120	152	129	123	79	MANATEE	998	1,171	1,338	1,177	1,194
BREVARD	1,254	1,368	1,411	1,445	1,363	MARION	520	626	651	655	750
BROWARD	9,104	9,860	10,497	9,889	10,487	MARTIN	425	493	543	536	615
CALHOUN	21	19	23	21	17	MIAMI-DADE	13,165	18,452	22,196	21,547	23,392
CHARLOTTE	523	494	547	562	685	MONROE	344	333	362	380	423
CITRUS	196	249	317	270	341	NASSAU	102	111	146	140	147
CLAY	169	324	356	346	402	OKALOOSA	365	450	485	433	514
COLLIER	795	876	942	928	902	OKEECHOBEE	59	102	143	113	177
COLUMBIA	116	117	132	151	178	ORANGE	3,492	3,626	4,444	5,127	5,457
DE SOTO	70	66	73	87	93	OSCEOLA	425	564	614	585	670
DIXIE	21	28	41	46	51	PALM BEACH	4,899	5,107	5,088	4,709	4,785
DUVAL	5,005	5,377	5,248	5,511	5,617	PASCO	638	815	1,039	935	1,110
ESCAMBIA	911	1,172	1,247	1,408	1,287	PINELLAS	2,991	3,588	3,656	3,943	4,503
FLAGLER	62	88	85	90	91	POLK	1,833	2,352	2,633	2,727	2,875
FRANKLIN	17	31	44	29	43	PUTNAM	254	296	338	382	391
GADSDEN	209	203	293	260	206	ST. JOHNS	386	401	517	525	565
GILCHRIST	8	14	27	34	31	ST. LUCIE	663	685	778	720	710
GLADES	24	23	19	36	33	SANTA ROSA	210	260	289	302	342
GULF	10	25	17	59	45	SARASOTA	1,102	1,450	1,770	1,817	1,759
HAMILTON	40	34	27	47	49	SEMINOLE	1,007	1,143	1,214	1,194	1,321
HARDEE	92	78	82	75	98	SUMTER	91	101	90	111	139
HENDRY	87	73	121	107	121	SUWANNEE	56	83	106	154	174
HERNANDO	164	175	259	235	238	TAYLOR	114	99	111	122	99
HIGHLANDS	165	190	161	125	159	UNION	17	23	21	19	19
HILLSBOROUGH	6,228	8,362	8,357	8,441	6,947	VOLUSIA	2,138	2,089	2,175	2,372	2,457
HOLMES	23	23	34	30	23	WAKULLA	34	48	59	65	50
INDIAN RIVER	361	430	390	467	401	WALTON	94	89	108	122	114
JACKSON	106	103	100	99	97	WASHINGTON	23	30	52	47	44
JEFFERSON	32	28	42	27	39	UNKNOWN	92	61	130	196	121
LAFAYETTE	2	6	15	10	19	STATEWIDE	68,546	82,164	89,262	89,792	93,520
LAKE	493	495	505	569	714						
LEE	1,633	2,598	1,720	1,620	1,650						
LEON	2,166	2,307	2,389	2,629	3,032						


County Data
**Florida Traffic
Crash Facts 1998**
TABLE 31 5 YEAR BICYCLE FATALITY HISTORY BY COUNTY

COUNTY	1994	1995	1996	1997	1998	COUNTY	1994	1995	1996	1997	1998
ALACHUA	2	2	0	2	1	LEVY	0	0	0	0	0
BAKER	0	0	0	1	0	LIBERTY	0	0	0	0	0
BAY	2	2	1	1	1	MADISON	0	0	0	0	0
BRADFORD	1	0	0	0	0	MANATEE	1	5	2	1	4
BREVARD	0	3	3	7	1	MARION	3	3	4	0	0
BROWARD	12	15	9	10	11	MARTIN	1	3	0	1	1
CALHOUN	1	0	0	0	1	MIAMI-DADE	16	14	7	16	8
CHARLOTTE	0	2	1	2	0	MONROE	5	3	3	0	3
CITRUS	0	1	1	1	2	NASSAU	1	1	0	1	0
CLAY	0	0	2	0	0	OKALOOSA	1	0	1	0	2
COLLIER	3	4	1	3	4	OKEECHOBEE	0	0	0	0	2
COLUMBIA	0	0	0	1	0	ORANGE	8	8	5	3	6
DE SOTO	0	0	0	0	0	OSCEOLA	1	3	0	1	1
DIXIE	0	0	0	0	0	PALM BEACH	10	9	6	5	4
DUVAL	4	7	5	5	3	PASCO	2	5	2	3	2
ESCAMBIA	2	3	0	3	2	PINELLAS	9	5	9	7	7
FLAGLER	0	0	0	0	0	POLK	5	4	4	3	1
FRANKLIN	0	0	0	0	0	PUTNAM	0	2	2	0	1
GADSDEN	1	0	0	0	1	ST. JOHNS	0	0	0	0	0
GILCHRIST	0	0	0	0	0	ST. LUCIE	1	1	2	0	1
GLADES	0	0	0	0	0	SANTA ROSA	2	1	0	3	0
GULF	0	0	0	0	0	SARASOTA	2	5	3	8	4
HAMILTON	0	0	0	0	0	SEMINOLE	4	2	1	2	0
HARDEE	0	0	0	0	0	SUMTER	1	0	0	0	0
HENDRY	0	0	0	1	0	SUWANNEE	0	0	0	0	0
HERNANDO	0	1	1	3	0	TAYLOR	0	1	0	0	0
HIGHLANDS	0	2	0	1	0	UNION	0	0	0	0	0
HILLSBOROUGH	9	11	16	9	10	VOLUSIA	3	3	7	4	4
HOLMES	0	0	0	0	0	WAKILLA	0	0	1	0	0
INDIAN RIVER	1	0	0	0	1	WALTON	0	0	0	0	0
JACKSON	0	1	0	1	0	WASHINGTON	0	0	0	0	0
JEFFERSON	0	0	0	0	0						
LAFAYETTE	0	0	0	0	0	UNKNOWN	0	0	0	0	0
LAKE	2	2	1	2	3						
LEE	6	2	4	3	5	STATEWIDE	123	137	105	114	97
LEON	1	1	1	0	0						


County Data
**Florida Traffic
Crash Facts 1998**
TABLE 32 5 YEAR BICYCLE INJURY HISTORY BY COUNTY

COUNTY	1994	1995	1996	1997	1998	COUNTY	1994	1995	1996	1997	1998
ALACHUA	203	181	159	147	156	LEVY	4	4	3	5	3
BAKER	2	5	3	0	2	LIBERTY	0	1	1	0	1
BAY	51	53	51	41	29	MADISON	4	3	4	2	2
BRADFORD	3	8	7	4	5	MANATEE	109	118	129	127	108
BREVARD	219	178	187	171	139	MARION	55	59	44	45	38
BROWARD	976	883	850	772	685	MARTIN	56	48	67	50	49
CALHOUN	0	1	1	1	0	MIAMI-DADE	857	859	813	735	620
CHARLOTTE	58	35	32	31	31	MONROE	103	55	88	66	82
CITRUS	22	26	13	15	22	NASSAU	13	6	11	8	12
CLAY	41	29	30	27	18	OKALOOSA	46	54	58	33	28
COLLIER	128	96	103	91	85	OKEECHOBEE	7	6	7	14	2
COLUMBIA	16	9	8	11	9	ORANGE	444	415	396	360	313
DE SOTO	16	18	11	8	9	OSCEOLA	62	52	47	53	49
DIXIE	2	2	0	0	2	PALM BEACH	539	554	512	435	421
DUVAL	326	302	320	257	234	PASCO	111	95	86	83	82
ESCAMBIA	92	89	111	98	67	PINELLAS	644	642	570	539	439
FLAGLER	10	12	9	5	4	POLK	176	182	136	133	141
FRANKLIN	0	2	1	3	1	PUTNAM	27	17	16	16	12
GADSDEN	8	3	8	4	5	ST. JOHNS	49	48	34	34	45
GILCHRIST	0	2	3	0	0	ST. LUCIE	66	59	59	46	30
GLADES	2	0	1	2	0	SANTA ROSA	18	17	15	16	16
GULF	2	0	0	4	0	SARASOTA	164	189	181	168	160
HAMILTON	0	2	0	1	4	SEMINOLE	121	100	104	80	99
HARDEE	7	5	4	1	4	SUMTER	5	9	10	2	6
HENDRY	9	2	2	2	12	SUWANNEE	4	3	2	3	10
HERNANDO	15	20	20	19	25	TAYLOR	4	3	4	1	4
HIGHLANDS	13	18	10	4	7	UNION	1	1	0	0	1
HILLSBOROUGH	415	499	522	430	365	VOLUSIA	283	255	230	231	187
HOLMES	0	1	0	0	0	WAKILLA	3	4	3	0	0
INDIAN RIVER	43	42	48	33	29	WALTON	1	2	1	3	8
JACKSON	5	2	4	3	0	WASHINGTON	2	2	0	1	0
JEFFERSON	1	4	0	1	0	UNKNOWN	6	5	13	15	2
LAFAYETTE	2	0	1	0	0	STATEWIDE	6,957	6,757	6,412	5,717	5,137
LAKE	41	37	25	32	25						
LEE	167	235	152	138	134						
LEON	78	89	72	57	59						



County Data

Florida Traffic
Crash Facts 1998

TABLE 33 5 YEAR PEDESTRIAN FATALITY HISTORY BY COUNTY

COUNTY	1994	1995	1996	1997	1998	COUNTY	1994	1995	1996	1997	1998
ALACHUA	4	6	5	6	3	LEVY	1	0	1	0	0
BAKER	0	1	0	0	1	LIBERTY	1	0	0	0	0
BAY	4	7	7	14	4	MADISON	0	0	0	0	0
BRADFORD	2	2	1	3	3	MANATEE	13	5	16	6	12
BREVARD	10	19	14	10	9	MARION	11	11	5	9	8
BROWARD	55	59	44	52	57	MARTIN	5	3	5	5	2
CALHOUN	0	0	1	1	0	MIAMI-DADE	87	96	94	79	86
CHARLOTTE	1	3	1	5	1	MONROE	5	5	5	2	6
CITRUS	2	3	1	1	5	NASSAU	1	4	0	2	5
CLAY	3	1	4	0	4	OKALOOSA	5	5	9	3	2
COLLIER	6	7	5	5	5	OKEECHOBEE	0	0	2	3	2
COLUMBIA	2	3	6	3	5	ORANGE	31	31	36	38	49
DE SOTO	0	2	2	0	0	OSCEOLA	6	8	9	6	9
DIXIE	1	0	1	0	0	PALM BEACH	29	31	39	21	31
DUVAL	20	14	23	23	29	PASCO	15	13	12	15	17
ESCAMBIA	12	16	10	12	7	PINELLAS	28	38	43	42	34
FLAGLER	1	2	0	0	1	POLK	11	19	13	21	20
FRANKLIN	0	0	0	0	1	PUTNAM	3	6	5	5	0
GADSDEN	3	1	4	3	2	ST. JOHNS	1	5	4	4	5
GILCHRIST	0	0	0	0	0	ST. LUCIE	7	7	3	2	4
GLADES	1	2	1	0	0	SANTA ROSA	3	5	2	3	2
GULF	1	1	1	2	0	SARASOTA	12	10	11	6	9
HAMILTON	0	2	0	0	0	SEMINOLE	10	12	5	10	13
HARDEE	4	2	1	0	1	SUMTER	1	2	2	0	2
HENDRY	1	3	3	2	3	SUWANNEE	2	3	0	0	1
HERNANDO	6	2	6	5	2	TAYLOR	0	4	1	0	1
HIGHLANDS	1	4	1	4	5	UNION	0	0	0	0	0
HILLSBOROUGH	42	29	37	46	38	VOLUSIA	21	14	24	18	18
HOLMES	0	0	0	0	1	WAKULLA	1	1	1	0	0
INDIAN RIVER	3	4	4	4	1	WALTON	3	3	0	0	1
JACKSON	1	0	3	2	1	WASHINGTON	0	1	0	0	0
JEFFERSON	0	1	1	0	0	UNKNOWN	0	0	0	2	0
LAFAYETTE	0	0	2	0	0	STATEWIDE	528	564	559	535	548
LAKE	3	7	8	6	7						
LEE	21	13	12	18	11						
LEON	5	6	3	6	2						


County Data
**Florida Traffic
Crash Facts 1998**
TABLE 34 5 YEAR PEDESTRIAN INJURY HISTORY BY COUNTY

COUNTY	1994	1995	1996	1997	1998	COUNTY	1994	1995	1996	1997	1998
ALACHUA	92	94	95	87	93	LEVY	7	8	11	3	11
BAKER	9	9	7	4	4	LIBERTY	4	3	0	0	0
BAY	74	67	77	70	83	MADISON	4	5	3	4	5
BRADFORD	10	9	3	5	5	MANATEE	136	143	108	120	126
BREVARD	186	146	173	170	134	MARION	91	83	64	61	78
BROWARD	1,097	994	953	940	1,023	MARTIN	51	40	45	44	44
CALHOUN	2	1	2	2	1	MIAMI-DADE	1,825	1,806	1,781	1,690	1,678
CHARLOTTE	50	39	39	24	50	MONROE	53	39	43	41	35
CITRUS	26	30	20	21	21	NASSAU	12	13	10	16	13
CLAY	33	34	29	35	35	OKALOOSA	46	65	46	45	45
COLLIER	83	74	90	73	78	OKEECHOBEE	7	9	16	16	17
COLUMBIA	19	12	26	15	22	ORANGE	549	515	559	570	618
DE SOTO	13	14	13	9	9	OSCEOLA	73	68	72	66	82
DIXIE	4	4	6	1	1	PALM BEACH	557	537	616	524	604
DUVAL	420	409	398	412	395	PASCO	103	114	133	125	139
ESCAMBIA	168	132	148	139	145	PINELLAS	506	449	492	467	490
FLAGLER	8	15	12	14	15	POLK	221	198	204	227	218
FRANKLIN	1	5	1	7	4	PUTNAM	31	28	20	28	37
GADSDEN	15	20	19	15	20	ST. JOHNS	37	43	46	45	33
GILCHRIST	1	1	2	2	0	ST. LUCIE	83	73	65	81	80
GLADES	5	4	2	3	3	SANTA ROSA	19	22	35	33	23
GULF	1	1	4	7	2	SARASOTA	134	126	109	132	131
HAMILTON	4	0	2	1	4	SEMINOLE	128	124	131	102	96
HARDEE	12	13	13	2	9	SUMTER	13	12	13	12	6
HENDRY	21	16	22	14	10	SUWANNEE	9	7	6	10	10
HERNANDO	35	36	30	39	39	TAYLOR	5	5	3	11	10
HIGHLANDS	23	20	22	19	17	UNION	1	1	2	1	3
HILLSBOROUGH	504	551	553	546	565	VOLUSIA	241	230	246	267	243
HOLMES	3	1	3	3	2	WAKULLA	2	2	4	6	11
INDIAN RIVER	33	29	39	27	35	WALTON	11	13	7	11	10
JACKSON	12	11	14	11	7	WASHINGTON	2	5	2	2	9
JEFFERSON	6	2	3	0	2	UNKNOWN	6	7	7	12	10
LAFAYETTE	0	0	0	0	0	STATEWIDE	8,309	8,035	8,054	7,794	8,074
LAKE	51	50	60	49	63						
LEE	210	302	147	179	162						
LEON	111	97	128	77	101						



Vehicle and Truck Information

Florida Traffic
Crash Facts 1998

TABLE 35 Fatal and Injury Crashes by Vehicle Type

Vehicle Type	All Crashes	Fatal Crashes	Injury Crashes	Property Damage
Automobile	274,563	2,569	197,264	74,730
Passenger Van	29,174	292	21,105	7,777
Light Truck (2 rear tires)	57,839	711	40,900	16,228
Medium Truck (4 rear tires)	5,645	105	3,811	1,729
Heavy Truck	3,220	67	2,154	999
Truck-Tractor(Cab)	3,900	98	2,540	1,262
Motor Home (RV)	368	6	246	116
Bus	2,338	33	1,485	820
Bicycle	5,705	104	5,247	354
Motorcycle	4,427	180	3,996	251
Moped	416	6	380	30
All Terrain Vehicle	344	7	282	55
Train	72	4	40	28
Other	2,202	42	1,517	643
Total	390,213	4,224	280,967	105,022

TABLE 36 Truck Crashes By Contributing Cause

Contributing Cause	Type of Truck			
	Light Truck(Pickup)	Medium Truck	Truck (Heavy)	Truck Tractor (Cab)
Careless Driving	12,852	1,169	597	754
Failed/Yield Right-of-Way	5,292	460	210	192
Improper Backing	603	195	122	66
Improper Lane Change	751	138	102	225
Improper Turn	911	121	66	98
Alco-Under Influence	1,743	38	15	11
Drugs-Under Influence	41	1	0	2
Alco & Drugs-Under Influ.	202	7	2	2
Followed Too Closely	1,242	127	80	67
Disregarded Traffic Signal	1,180	110	62	47
Exceeded Speed limit	1,360	79	41	48
Disregarded Stop Sign	494	35	8	15
Failed to Maintain Equip.	368	86	84	73
Improper Passing	203	15	7	16
Drove Left of Center	320	30	13	25
Obstructing Traffic	119	27	14	23
Improper Load	82	23	24	35
Disregard Other Traff. Control	75	14	5	6
Driving Wrong Side/Way	129	6	2	7
All Other	3,540	460	274	299
Total	31,507	3,141	1,728	2,011

Alcohol-Related Crashes by Locality

Florida Traffic Crash Facts

1998

Locality	County	Total Crashes	Alcohol- Related Crashes		Locality	County	Total Crashes	Alcohol- Related Crashes	
			Related Crashes	as % of Total				Related Crashes	as % of Total
Alachua	Alachua	120	10	8.33	Carol City	Miami-Dade	209	10	4.78
Altamonte Springs	Seminole	339	60	17.70	Carrabelle	Franklin	10	1	10.00
Anna Maria	Manatee	7	2	28.57	Carver Ranch Estates	Broward	8	1	12.50
Apalachicola	Franklin	17	0	0.00	Casselberry	Seminole	544	54	9.93
Apopka	Orange	197	19	9.64	Cecil Field NAS	Duval	4	1	25.00
Arcadia	De Soto	95	10	10.53	Cedar Grove	Bay	24	3	12.50
Archer	Alachua	25	5	20.00	Cedar Hmck/Brad S	Manatee	2	0	0.00
Atlantic Beach	Duval	170	22	12.94	Cedar Key	Levy	11	2	18.18
Atlantis	Palm Beach	11	1	9.09	Center Hill	Sumter	2	1	50.00
Auburndale	Polk	233	22	9.44	Century	Escambia	11	0	0.00
Avon Park	Highlands	105	8	7.62	Chattahoochee	Gadsden	13	3	23.08
Azalea Park	Orange	1	0	0.00	Chiefland	Levy	30	2	6.67
Bal Harbor	Miami-Dade	71	3	4.23	Chipley	Washington	49	2	4.08
Baldwin	Duval	17	2	11.76	Clair-Mel	Hillsborough	17	0	0.00
Bartow	Polk	236	17	7.20	Clearwater	Pinellas	1,708	185	10.83
Bascom	Jackson	1	0	0.00	Clermont	Lake	148	8	5.41
Bay Harbor Islands	Miami-Dade	31	5	16.13	Clewiston	Hendry	90	10	11.11
Bay Lake	Orange	1	0	0.00	Cloud Lake	Palm Beach	5	0	0.00
Belle Glade	Palm Beach	294	28	9.52	Cocoa	Brevard	398	25	6.28
Belle Isle	Orange	2	1	50.00	Cocoa Beach	Brevard	206	46	22.33
Belleair	Pinellas	18	2	11.11	Cocoa West	Brevard	2	0	0.00
Belleair Beach	Pinellas	17	1	5.88	Coconut Creek	Broward	400	26	6.50
Belleair Bluffs	Pinellas	35	1	2.86	Collier Manr/Cresthavn	Broward	14	1	7.14
Bellevue	Marion	54	6	11.11	Conway	Orange	3	0	0.00
Belvedere Homes	Palm Beach	2	0	0.00	Cooper City	Broward	248	26	10.48
Bethune Cookman Coll.	Volusia	2	0	0.00	Coral Gables	Miami-Dade	896	56	6.25
Biscayne Gardens	Miami-Dade	21	1	4.76	Coral Springs	Broward	1,087	48	4.42
Biscayne Park	Miami-Dade	13	2	15.38	Coral Way Village	Miami-Dade	4	0	0.00
Blountstown	Calhoun	16	1	6.25	Cottondale	Jackson	8	1	12.50
Boca Chica NAS	Monroe	3	1	33.33	Crawfordville	Wakulla	3	0	0.00
Boca Raton	Palm Beach	1,349	98	7.26	Crescent City	Putnam	22	0	0.00
Bonifay	Holmes	5	2	40.00	Crestview	Okaloosa	204	20	9.80
Bonita Springs	Lee	114	18	15.79	Cross City	Dixie	12	1	8.33
Boynton Beach	Palm Beach	887	89	10.03	Crystal River	Citrus	129	15	11.63
Bradenton	Manatee	205	18	8.78	Cutler Ridge	Miami-Dade	22	0	0.00
Bradenton Beach	Manatee	3	1	33.33	Dade City	Pasco	147	7	4.76
Brandon	Hillsborough	200	11	5.50	Dade County School PD	Miami-Dade	81	6	7.41
Branford	Suwannee	1	0	0.00	Dania Beach	Broward	397	32	8.06
Brent	Escambia	19	3	15.79	Davenport	Polk	10	1	10.00
Briny Breezes	Palm Beach	2	0	0.00	Davie	Broward	1,522	123	8.08
Bristol	Liberty	1	1	100.00	Daytona Beach	Volusia	2,272	189	8.32
Broadview Park	Broward	12	2	16.67	Daytona Beach Shores	Volusia	45	12	26.67
Bronson	Levy	12	1	8.33	De Bary	Volusia	96	12	12.50
Brooksville	Hernando	94	10	10.64	De Land	Volusia	282	35	12.41
Browardale	Broward	5	1	20.00	De Leon Springs	Volusia	27	5	18.52
Browns Village	Miami-Dade	4	0	0.00	Deerfield Beach	Broward	922	62	6.72
Bunnell	Flagler	18	0	0.00	Defuniak Springs	Walton	74	5	6.76
Bushnell	Sumter	19	2	10.53	Delray Beach	Palm Beach	816	60	7.35
Callahan	Nassau	19	2	10.53	Deltona	Volusia	518	41	7.92
Calloway	Bay	110	13	11.82	Doctors Inlet	Clay	1	0	0.00
Canova Beach	Brevard	1	0	0.00	Dundee	Polk	1	0	0.00
Cantonment	Escambia	12	3	25.00	Dunedin	Pinellas	456	56	12.28
Cape Canaveral	Brevard	70	19	27.14	Dunnellon	Marion	11	1	9.09
Cape Coral	Lee	724	88	12.15	Eagle Lake	Polk	30	1	3.33

Alcohol-Related Crashes by Locality

Florida Traffic Crash Facts

1998

Locality	County	Total Crashes	Alcohol-Related Crashes		Locality	County	Total Crashes	Alcohol-Related Crashes	
			Related Crashes	as % of Total				Related Crashes	as % of Total
East Lake Orient Park	Hillsborough	1	0	0.00	Havana	Gadsden	6	1	16.67
East Naples	Collier	301	42	13.95	Haverhill	Palm Beach	4	0	0.00
East Richey Lakes	Pasco	1	0	0.00	Hawthorne	Alachua	33	4	12.12
Ebro	Washington	1	1	100.00	Hialeah	Miami-Dade	3,702	220	5.94
Eckerd College	Pinellas	1	0	0.00	Hialeah Gardens	Miami-Dade	208	18	8.65
Edgewater	Volusia	172	22	12.79	High Springs	Alachua	68	10	14.71
Edgewood	Orange	42	6	14.29	Highland Beach	Palm Beach	25	4	16.00
Eglin AFB	Okaloosa	1	0	0.00	Hilliard	Nassau	5	0	0.00
Egypt Lake	Hillsborough	1	0	0.00	Hillsboro Beach	Broward	14	0	0.00
El Portal	Miami-Dade	3	0	0.00	Hobe Sound	Martin	60	12	20.00
Ellyson Field NAS	Escambia	1	0	0.00	Holden Hills	Orange	3	0	0.00
Englewood	Charlotte	92	12	13.04	Holly Hill	Volusia	177	14	7.91
Eustis	Lake	207	21	10.14	Hollywood	Broward	2,461	161	6.54
Everglades	Collier	5	1	20.00	Hollywood Ridge Farm	Broward	2	0	0.00
Fellsmere	Indian River	4	0	0.00	Holmes Beach	Manatee	18	4	22.22
Fernandina Beach	Nassau	93	10	10.75	Homestead	Miami-Dade	315	47	14.92
Fla. Memorial College	Saint Johns	5	1	20.00	Homestead AFB	Miami-Dade	8	1	12.50
Flagler Beach	Flagler	29	10	34.48	Homosassa Springs	Citrus	11	2	18.18
Florida A&M University	Leon	48	0	0.00	Howey-in-the-Hills	Lake	7	1	14.29
Florida Atlantic Univ.	Palm Beach	10	1	10.00	Hypoluxo	Palm Beach	11	0	0.00
Florida City	Miami-Dade	4	1	25.00	Immokalee	Collier	236	51	21.61
Florida Inst. of Tech.	Brevard	1	0	0.00	Indianantic	Brevard	51	7	13.73
Florida State Univ.	Leon	21	3	14.29	Indian Creek Village	Miami-Dade	15	0	0.00
Fort Meade	Polk	46	4	8.70	Indian Harbour Beach	Brevard	31	4	12.90
Fort Myers	Lee	1,351	127	9.40	Indian River Shores	Indian River	9	1	11.11
Fort Myers Beach	Lee	21	5	23.81	Indian Rocks Beach	Pinellas	23	3	13.04
Fort Myers SE	Lee	5	0	0.00	Indian Shores	Pinellas	19	7	36.84
Fort Myers SW	Lee	14	1	7.14	Indiantown	Martin	60	23	38.33
Fort Pierce	Saint Lucie	648	49	7.56	Interlachen	Putnam	45	6	13.33
Fort Pierce NW	Saint Lucie	37	3	8.11	Inverness	Citrus	39	0	0.00
Fort White	Columbia	4	0	0.00	Islamorada	Monroe	71	11	15.49
Freeport	Walton	5	2	40.00	Islandia	Miami-Dade	4	0	0.00
Frostproof	Polk	17	2	11.76	Jacksonville	Duval	12,442	1025	8.24
Fruitland Park	Lake	63	5	7.94	Jacksonville Beach	Duval	500	78	15.60
Ft. Lauderdale	Broward	4,235	459	10.84	Jacksonville NAS	Duval	7	2	28.57
Ft. Myers Vii/Pin Mn	Lee	2	0	0.00	Jacksonville Univ.	Duval	4	0	0.00
Ft. Walton Beach	Okaloosa	236	29	12.29	Jasper	Hamilton	10	1	10.00
Gainesville	Alachua	2,093	186	8.89	Jay	Santa Rosa	3	0	0.00
Gifford	Indian River	1	0	0.00	Jennings	Hamilton	1	0	0.00
Golden Beach	Miami-Dade	9	0	0.00	Jensen Beach	Martin	160	20	12.50
Golden Glades	Miami-Dade	30	1	3.33	June Park	Brevard	1	0	0.00
Goulds	Miami-Dade	22	0	0.00	Juno Beach	Palm Beach	28	5	17.86
Graceville	Jackson	17	2	11.76	Jupiter	Palm Beach	370	67	18.11
Grand Ridge	Jackson	6	1	16.67	Jupiter Inlet Clny	Palm Beach	1	0	0.00
Green Cove Springs	Clay	72	6	8.33	Jupiter Island	Martin	7	0	0.00
Greenacres City	Palm Beach	263	21	7.98	Kendall	Miami-Dade	184	7	3.80
Gretna	Gadsden	9	2	22.22	Kennedy Space Center	Brevard	22	2	9.09
Groveland	Lake	31	3	9.68	Kenneth City	Pinellas	56	2	3.57
Gulf Breeze	Santa Rosa	78	11	14.10	Key Biscayne	Miami-Dade	76	3	3.95
Gulf Gate Estates	Sarasota	1	0	0.00	Key Colony Beach	Monroe	4	1	25.00
Gulf Stream	Palm Beach	15	3	20.00	Key Largo	Monroe	192	32	16.67
Gulfport	Pinellas	114	17	14.91	Key West	Monroe	481	85	17.67
Hacienda	Broward	1	0	0.00	Keystone Heights	Clay	7	1	14.29
Haines City	Polk	231	25	10.82	Kissimmee	Osceola	590	47	7.97
Hallandale	Broward	677	31	4.58	La Belle	Hendry	35	3	8.57
Hastings	Saint Johns	10	1	10.00	La Crosse	Alachua	3	1	33.33

Alcohol-Related Crashes by Locality

Florida Traffic Crash Facts

1998

Locality	County	Total Crashes	Alcohol- related Crashes		Locality	County	Total Crashes	Alcohol- related Crashes	
			Related Crashes	as % of Total				Related Crashes	as % of Total
Lady Lake	Lake	101	12	11.88	Medley	Miami-Dade	173	5	2.89
Lake Alfred	Polk	51	7	13.73	Melbourne	Brevard	577	74	12.82
Lake Buena Vista	Orange	63	3	4.76	Melbourne Beach	Brevard	15	3	20.00
Lake Butler	Union	11	1	9.09	Melrose Park	Broward	7	1	14.29
Lake Carroll	Hillsborough	4	0	0.00	Merritt Island	Brevard	475	62	13.05
Lake City	Columbia	141	12	8.51	Mexico Beach	Bay	16	1	6.25
Lake Clarke Shores	Palm Beach	32	0	0.00	Miami	Miami-Dade	9,955	364	3.66
Lake Forest	Broward	2	1	50.00	Miami Beach	Miami-Dade	2,539	230	9.06
Lake Hamilton	Polk	30	4	13.33	Miami Lakes	Miami-Dade	104	1	0.96
Lake Helen	Volusia	14	3	21.43	Miami Shores	Miami-Dade	147	3	2.04
Lake Holloway	Polk	1	0	0.00	Miami Springs	Miami-Dade	77	3	3.90
Lake Magdalene	Hillsborough	5	1	20.00	Micanopy	Alachua	10	2	20.00
Lake Mary	Seminole	268	18	6.72	Micc. Indian Res.	Miami-Dade	14	6	42.86
Lake Park	Palm Beach	118	4	3.39	Middleburg	Clay	19	3	15.79
Lake Placid	Highlands	25	5	20.00	Milton	Santa Rosa	79	3	3.80
Lake Wales	Polk	184	17	9.24	Mims	Brevard	39	6	15.38
Lake Worth	Palm Beach	868	76	8.76	Minneola	Lake	10	0	0.00
Lakeland	Polk	1,475	168	11.39	Miramar	Broward	640	52	8.13
Land O'Lakes	Pasco	14	1	7.14	Monticello	Jefferson	19	4	21.05
Lantana	Palm Beach	205	23	11.22	Moore Haven	Glades	15	0	0.00
Largo	Pinellas	864	117	13.54	Mount Dora	Lake	220	27	12.27
Lauderdale Lakes	Broward	538	26	4.83	Mulberry	Polk	56	1	1.79
Lauderdale-by-the-Sea	Broward	55	2	3.64	Myrtle Grove	Escambia	55	3	5.45
Lauderhill	Broward	731	39	5.34	Naples	Collier	319	50	15.67
Laurel Hill	Okaloosa	3	2	66.67	Naranja	Miami-Dade	14	1	7.14
Lawtey	Bradford	3	0	0.00	Neptune Beach	Duval	105	20	19.05
Layton	Monroe	5	2	40.00	New Port Richey	Pasco	329	46	13.98
Lazy Lake Village	Broward	8	0	0.00	New Smyrna Beach	Volusia	294	27	9.18
Lealman	Pinellas	1	0	0.00	Newberry	Alachua	55	7	12.73
Lee Co. Airport Police	Lee	36	3	8.33	Niceville	Okaloosa	77	15	19.48
Leesburg	Lake	276	25	9.06	North Andrews Gardens	Broward	4	0	0.00
Lehigh Acres	Lee	51	6	11.76	North Bay Village	Miami-Dade	36	3	8.33
Leisure City	Miami-Dade	8	0	0.00	North Fort Myers	Lee	103	11	10.68
Lighthouse Point	Broward	160	14	8.75	North Lauderdale	Broward	257	13	5.06
Live Oak	Suwannee	183	17	9.29	North Miami	Miami-Dade	1,443	29	2.01
Lockhart	Orange	4	0	0.00	North Miami Beach	Miami-Dade	898	45	5.01
Longboat Key	Manatee	12	3	25.00	North Naples	Collier	194	28	14.43
Longboat Key	Sarasota	35	2	5.71	North Palm Beach	Palm Beach	125	10	8.00
Longwood	Seminole	199	19	9.55	North Redington Beach	Pinellas	8	2	25.00
Lynn Haven	Bay	133	11	8.27	Norwood	Miami-Dade	7	0	0.00
Macclenny	Baker	42	4	9.52	Oak Hill	Volusia	5	0	0.00
Macdill AFB	Hillsborough	8	3	37.50	Oakland	Orange	24	4	16.67
Madeira Beach	Pinellas	108	22	20.37	Oakland Park	Broward	1,201	100	8.33
Madison	Madison	43	0	0.00	Ocala	Marion	1,169	78	6.67
Maitland	Orange	169	22	13.02	Ocean City	Okaloosa	16	0	0.00
Malabar	Brevard	8	1	12.50	Ocean Ridge	Palm Beach	10	2	20.00
Malone	Jackson	6	0	0.00	Ocoee	Orange	303	34	11.22
Manalapan	Palm Beach	7	0	0.00	Ojus	Miami-Dade	7	0	0.00
Mangonia Park	Palm Beach	114	3	2.63	Okaloosa Cnty Arpt	Okaloosa	3	0	0.00
Marathon	Monroe	108	20	18.52	Okeechobee	Okeechobee	188	20	10.64
Margate	Broward	566	59	10.42	Oldsmar	Pinellas	171	16	9.36
Marianna	Jackson	62	0	0.00	Olympia Heights	Miami-Dade	2	0	0.00
Mary Esther	Okaloosa	54	9	16.67	Oneco	Manatee	1	0	0.00
Mascotte	Lake	24	5	20.83	Opa Locka	Miami-Dade	364	13	3.57
Mayo	Lafayette	4	0	0.00	Orange City	Volusia	134	8	5.97
Mccoy AFB	Orange	3	0	0.00	Orange Park	Clay	62	5	8.06

Alcohol-Related Crashes by Locality

Florida Traffic Crash Facts

1998

Locality	County	Total Crashes	Alcohol-Related Crashes		Locality	County	Total Crashes	Alcohol-Related Crashes	
			Related Crashes	as % of Total				Related Crashes	as % of Total
Orlando	Orange	5,145	324	6.30	Ridgewood Heights	Sarasota	1	0	0.00
Orlando AFB	Orange	1	0	0.00	Riverland	Broward	6	2	33.33
Orlovista	Orange	9	1	11.11	Riviera Beach	Palm Beach	544	38	6.99
Ormond Beach	Volusia	385	48	12.47	Rockledge	Brevard	81	18	22.22
Ormond by the Sea	Volusia	10	1	10.00	Royal Palm Beach	Palm Beach	219	19	8.68
Otter Creek	Levy	1	0	0.00	Ruskin	Hillsborough	21	3	14.29
Oviedo	Seminole	212	11	5.19	Safety Harbor	Pinellas	154	16	10.39
Pahokee	Palm Beach	51	6	11.76	San Antonio	Pasco	2	0	0.00
Palatka	Putnam	360	31	8.61	Sanford	Seminole	573	54	9.42
Palm Bay	Brevard	517	75	14.51	Sanibel	Lee	27	4	14.81
Palm Beach	Palm Beach	116	15	12.93	Sarasota	Sarasota	1,472	170	11.55
Palm Beach Gardens	Palm Beach	487	42	8.62	Sarasota S	Sarasota	2	0	0.00
Palm Beach Shores	Palm Beach	6	1	16.67	Satellite Beach	Brevard	50	8	16.00
Palm City	Martin	68	17	25.00	Sea Ranch Lakes	Broward	19	1	5.26
Palm River/Clair Mel	Hillsborough	9	1	11.11	Sebastian	Indian River	71	10	14.08
Palm Shores	Brevard	4	1	25.00	Sebring	Highlands	95	8	8.42
Palm Springs	Palm Beach	68	10	14.71	Seminole	Pinellas	221	19	8.60
Palmetto	Manatee	133	20	15.04	Seminole Park	Pinellas	2	0	0.00
Palmetto Estates	Miami-Dade	1	0	0.00	Seville	Volusia	9	0	0.00
Panama City	Bay	979	94	9.60	Sewalls Point	Martin	12	2	16.67
Panama City Beach	Bay	222	58	26.13	Shalimar	Okaloosa	3	0	0.00
Parker	Bay	70	11	15.71	Siesta Key	Sarasota	5	0	0.00
Parkland	Broward	41	7	17.07	Silver Springs Shores	Marion	3	3	100.00
Parrish	Manatee	1	0	0.00	Sky Lake	Orange	7	0	0.00
Patrick AFB	Brevard	4	0	0.00	Sneads	Jackson	8	1	12.50
Paxton	Walton	3	1	33.33	Sopchoppy	Wakulla	1	0	0.00
Pembroke Park	Broward	341	25	7.33	South Bay	Palm Beach	39	3	7.69
Pembroke Pines	Broward	1,637	71	4.34	South Daytona	Volusia	155	27	17.42
Pensacola	Escambia	603	96	15.92	South Miami	Miami-Dade	202	6	2.97
Perrine	Miami-Dade	52	4	7.69	South Miami Heights	Miami-Dade	1	0	0.00
Perry	Taylor	150	10	6.67	South Palm Beach	Palm Beach	11	2	18.18
Pierson	Volusia	10	0	0.00	South Pasadena	Pinellas	55	2	3.64
Pine Hills	Orange	287	24	8.36	South Patrick Shores	Brevard	13	2	15.38
Pinellas Park	Pinellas	872	86	9.86	Springfield	Bay	76	12	15.79
Pinewood	Miami-Dade	12	0	0.00	St. Augustine	Saint Johns	166	13	7.83
Pini Co Campus P.D.	Pinellas	5	1	20.00	St. Augustine Beach	Saint Johns	44	7	15.91
Plant City	Hillsborough	493	29	5.88	St. Cloud	Osceola	256	26	10.16
Plantation	Broward	1,348	67	4.97	St. Leo	Pasco	2	0	0.00
Polk City	Polk	15	2	13.33	St. Marks	Wakulla	1	0	0.00
Pompano Beach	Broward	1,991	172	8.64	St. Petersburg	Pinellas	3,861	405	10.49
Pompano Beach Hlnds	Broward	6	0	0.00	St. Petersburg Beach	Pinellas	170	24	14.12
Ponce De Leon	Holmes	1	0	0.00	Starke	Bradford	50	7	14.00
Ponce Inlet	Volusia	7	1	14.29	Steinhatchee	Taylor	5	1	20.00
Port Charlotte	Charlotte	292	26	8.90	Stetson University	Volusia	9	0	0.00
Port Charlotte	Sarasota	82	10	12.20	Stuart	Martin	474	51	10.76
Port Orange	Volusia	398	54	13.57	Sunny Isles	Miami-Dade	8	0	0.00
Port Richey	Pasco	143	23	16.08	Sunrise	Broward	787	54	6.86
Port Salerno	Martin	55	10	18.18	Surfside	Miami-Dade	74	3	4.05
Port St. Joe	Gulf	29	5	17.24	Sweetwater	Miami-Dade	56	5	8.93
Port St. Lucie	Saint Lucie	587	73	12.44	Tallahassee	Leon	4,657	340	7.30
Progress Village	Hillsborough	2	0	0.00	Tamarac	Broward	862	38	4.41
Punta Gorda	Charlotte	136	6	4.41	Tampa	Hillsborough	9,462	776	8.20
Quincy	Gadsden	159	12	7.55	Tarpon Springs	Pinellas	363	38	10.47
Redington Beach	Pinellas	4	0	0.00	Tavares	Lake	82	10	12.20
Redington Shores	Pinellas	24	7	29.17	Tavernier	Monroe	54	12	22.22
Richmond Heights	Miami-Dade	181	8	4.42	Temple Terrace	Hillsborough	186	17	9.14

Alcohol-Related Crashes by Locality

Florida Traffic Crash Facts

1998

Locality	County	Total Crashes	Alcohol-Related Crashes	
			Related Crashes	as % of Total
Tequesta Village	Palm Beach	47	8	17.02
Tice	Lee	13	2	15.38
Titusville	Brevard	447	33	7.38
Treasure Island	Pinellas	72	15	20.83
Trenton	Gilchrist	1	0	0.00
Uleta	Miami-Dade	2	0	0.00
Umatilla	Lake	22	4	18.18
Univ. of Central Fla.	Orange	25	0	0.00
Univ. of North Florida	Duval	20	0	0.00
Univ. of S. Florida	Hillsborough	27	1	3.70
Univ. of West Florida	Escambia	13	1	7.69
University of Florida	Alachua	66	4	6.06
University of Miami	Miami-Dade	3	1	33.33
University of Tampa	Hillsborough	5	1	20.00
Valparaiso	Okaloosa	19	1	5.26
Venice	Sarasota	130	8	6.15
Venice South	Sarasota	2	0	0.00
Vernon	Washington	3	1	33.33
Vero Beach	Indian River	251	28	11.16
Vero Beach South	Indian River	7	1	14.29
Virginia Gardens	Miami-Dade	9	1	11.11
Wabasso	Indian River	2	0	0.00
Wahneta	Polk	7	2	28.57
Waldo	Alachua	14	1	7.14
Ward Ridge	Gulf	1	0	0.00
Warrington	Escambia	63	6	9.52
Wauchula	Hardee	89	12	13.48
Webster	Sumter	2	0	0.00
West Bradenton	Manatee	582	56	9.62
West Gate	Palm Beach	2	0	0.00
West Hollywood	Broward	17	0	0.00
West Melbourne	Brevard	67	6	8.96
West Miami	Miami-Dade	68	4	5.88
West Palm Beach	Palm Beach	2,008	181	9.01
West Pensacola	Escambia	13	1	7.69
West Winter Haven	Polk	3	0	0.00
Weston	Broward	156	10	6.41
Westview	Miami-Dade	3	0	0.00
Wewahitchka	Gulf	5	1	20.00
White Springs	Hamilton	3	1	33.33
Whiting Field	Santa Rosa	1	0	0.00
Wildwood	Sumter	28	6	21.43
Williston	Levy	41	1	2.44
Wilton Manors	Broward	213	19	8.92
Windermere	Orange	9	0	0.00
Winter Garden	Orange	158	20	12.66
Winter Haven	Polk	647	55	8.50
Winter Park	Orange	278	30	10.79
Winter Springs	Seminole	85	7	8.24
Yulee	Nassau	7	0	0.00
Zephyrhills	Pasco	156	6	3.85
Zolfo Springs	Hardee	1	0	0.00