

# ► Table of Contents

**Florida Traffic  
Crash Facts 1 9 9 7**

Source of Data .....	2
Definition of Terms .....	3
State of Florida Summary .....	4
Florida Traffic Trends .....	6
<b>When Crashes Occur .....</b>	<b>7 - 10</b>
Traffic Crashes by Month .....	7
Crashes by Day of Week .....	8
Crashes by Time of Day .....	9
Holiday Traffic Fatalities .....	10
<b>Persons Involved in Crashes .....</b>	<b>11 - 20</b>
Sex of Drivers in Crashes .....	11
Age of Drivers in Crashes .....	12
Selected Age Groups .....	13
Safety Equipment Use .....	14
Child Passengers .....	15
Motorcyclist Fatality Trends .....	16
Bicyclist Crash Trends .....	17
Pedestrian Fatality Trends .....	18
Pedestrian Crash Rates by Sex and Age .....	19
Pedestrian Behavior in Crashes .....	20
Passengers Riding in the Body of Light (Pickup) Trucks .....	20
<b>Causal Factors in Crashes .....</b>	<b>21 - 23</b>
Contributing Causes .....	21
Alcohol-Related Crash Trends .....	22
Alcohol and Drug Use .....	23
<b>County/Locality Data .....</b>	<b>25 - 33</b>
Fatality Trend by County .....	26
Crash Trend by County .....	27
Alcohol-Related Fatalities by County .....	28
Alcohol-Related Crashes by County .....	29
Alcohol-Related Crashes by Locality .....	30
<b>Annual Standard Summary .....</b>	<b>35 - 45</b>

APPENDIX: Florida Traffic Crash Report Form

## ► Source of Data

The information contained in this Traffic Crash Facts booklet is extracted from law enforcement agency long-form reports of traffic crashes. A law enforcement officer must submit a long-form crash report when investigating:

Motor vehicle crashes resulting in death or personal injury, or

Motor vehicle crashes in which one or more of the following conditions occur:

Leaving the scene involving damage to an attended vehicle or property (Section 316.061 (1), F.S.);

Driving while under the influence of alcoholic beverages, chemical substances, or controlled substances or with an unlawful blood alcohol level (Section 316.193, F.S.).

An investigating officer *may* report other traffic crashes on the long-form. In particular, applicable statutes specify an officer's discretion to submit a long-form report in crashes where a vehicle is rendered inoperable to the degree that a wrecker is required to remove it from traffic.

Statutory revisions in 1983 and 1989 reduced the number of non-injury crashes required to be reported to the Department. Any presentation of historical data that includes such crashes, such as total traffic crash counts, will reflect these changes. Data on traffic crashes involving death, injury, or other criteria for law enforcement long-form reports as outlined above are not affected.

Please note:

All 1992 data in this publication have been updated from preliminary figures published in the Department of Highway Safety and Motor Vehicles *Traffic Crash Data, 1992*. Figures from the 1992 publication should not be used for year-to-year comparisons.

# ► Definition of Terms

The following terms are defined as they apply to the crash data presented in this publication. These definitions may differ from legal or other uses of the same terms.

- Alcohol-related traffic crash-** A crash involving a driver and/or pedestrian for whom alcohol use was reported (does not presume intoxication).
- Bicycle-** A vehicle propelled solely by human power or a motorized bicycle propelled by a combination of human power and an electric helper motor rated at 200 watts or less (this term does not include a vehicle with a seat height less than 26 inches from the ground when the seat is adjusted to its highest position, or a scooter or similar device).
- Bicyclist-** The driver of a bicycle. A passenger on a bicycle is considered a vehicle passenger.
- Driver-** Unless otherwise indicated, the operator of a motor vehicle or bicycle. Driver data typically exclude uninjured persons presumed to have been operating hit-and-run, phantom, or properly parked vehicles.
- Fatal traffic crash-** A traffic crash that results in one or more fatalities within ninety days of occurrence.
- First harmful event-** The first damage-producing event in a traffic crash.
- Moped-** A motor-powered cycle with a pedal-activated motor and two brake horse-power maximum.
- Motor vehicle-** Any motorized vehicle not operating on rails.
- Motorcycle-** A motor vehicle, with a seat or saddle for the driver's use, traveling with no more than three wheels in contact with the ground, excluding a tractor or a moped.
- Motorcyclist-** The driver of a motorcycle. A passenger on a motorcycle is considered a vehicle passenger.
- Traffic crash-** A crash involving at least one motor vehicle on a trafficway that is open to the public.
- Traffic fatality-** The death of a person as a direct result of a traffic crash within ninety days of the crash occurrence.
- Vehicle occupants-** Drivers and passengers of automobiles, vans, trucks, buses, and motor homes.

# ► State of Florida Summary

Florida Traffic  
Crash Facts 1 9 9 7

## ALL CRASHES

Compared to 1996, there was a 0.3% decrease in traffic crashes investigated and reported.

Traffic crashes .....	240,639
Drivers involved .....	385,964
Average crashes per day .....	659

## FATAL CRASHES AND FATALITIES

Compared to 1996, there was a 0.2% increase in traffic fatalities.

Fatalities .....	2,811
Fatal crashes .....	2,542

## INJURY CRASHES

Compared to 1996, there was a 1.4% decrease in traffic injuries.

Injuries .....	240,001
Injury crashes .....	148,305

## ALCOHOL-RELATED CRASHES AND FATALITIES

32.9% of traffic fatalities and 10.0% of traffic crashes were alcohol-related.

Alcohol-related fatalities .....	926
Alcohol-related injuries .....	21,772
Alcohol-related crashes .....	24,119
Alcohol-related fatal crashes .....	826
Alcohol-related injury crashes .....	13,204

## CRASH ENVIRONMENTS

60.0% of all crashes occurred in primarily business areas, while 58.3% of fatal crashes were in open country or residential areas.

Crashes in Business Areas .....	144,483
Crashes in Residential Areas .....	68,907
Crashes in Open Country .....	27,249
Fatal Crashes in Business Areas .....	1,061
Fatal Crashes in Residential Areas .....	651
Fatal Crashes in Open Country .....	830

# ► State of Florida Summary

Florida Traffic  
Crash Facts 1 9 9 7

## SAFETY EQUIPMENT

83.6% of motor vehicle occupants, bicyclists, and motorcyclists involved in crashes were reported using safety equipment, while 16.3% were reported not using safety equipment. Safety equipment use was not reported for 0.2%.

Vehicle Occupants Using Safety Belts .....	462,525
Vehicle Occupants Using Child Safety Seats .....	11,801
Vehicle Occupants Using Air Bags (Only) .....	2,249
Vehicle Occupants Not Using Safety Equipment .....	86,477
Bicyclists with Safety Helmet .....	536
Bicyclists without Safety Helmet .....	5,780
Motorcyclists with Safety Helmet .....	3,386
Motorcyclists without Safety Helmet .....	1,217
Safety Equipment Use Not Stated .....	978

## PEDESTRIAN CRASHES

19.0% of all traffic fatalities were pedestrians.

Pedestrians killed .....	535
Pedestrians injured .....	7,794
Pedestrian crashes* .....	8,372

## BICYCLE CRASHES

4.1% of all traffic fatalities were bicycle drivers.

Bicycle drivers killed .....	114
Bicycle drivers injured .....	5,717
Bicycle crashes* .....	6,343

## MOTORCYCLE CRASHES

5.8% of all traffic fatalities were motorcycle drivers.

Motorcyclists killed .....	163
Motorcyclists injured .....	3,927
Motorcycle crashes .....	4,473

\* Pedestrian and bicycle crashes include all crashes involving pedestrians or bicycles and are not comparable to crashes by first harmful event as reported in previous editions.

# ▶ Florida Traffic Trends

Florida Traffic  
Crash Facts 1997

YEAR	LICENSED DRIVERS	REGISTERED VEHICLES	VEHICLE MILES*	CRASHES	NON-FATAL INJURIES	DEATHS	MILEAGE DEATH RATE**
1978	6,915,219	8,079,308	71,437	326,119	181,019	2,305	3.2
1979	7,341,081	7,724,148	74,651	343,542	190,697	2,635	3.5
1980	7,809,423	7,797,375	75,281	357,720	201,385	2,879	3.8
1981	8,222,403	7,887,881	76,146	368,766	205,437	3,119	4.1
1982	8,598,019	8,622,549	79,497	361,312	195,834	2,710	3.4
1983	8,987,493	9,064,490	81,775	384,614	194,791	2,729	3.3
1984	9,442,763	9,444,964	85,241	237,511	202,889	2,856	3.4
1985	9,630,975	10,827,693	88,057	250,412	216,596	2,870	3.3
1986	9,924,110	11,651,253	87,325	242,381	219,352	2,874	3.3
1987	10,241,063	11,738,273	92,865	240,429	215,886	2,891	3.1
1988	10,648,019	11,997,948	105,030	256,543	230,738	3,152	3.0
1989	11,109,288	12,276,272	108,876	252,439	230,060	3,033	2.8
1990	11,612,402	12,465,790	109,997	216,245	214,208	2,951	2.7
1991	12,170,821	11,184,146†	113,484	195,312	195,122	2,523	2.2
1992	11,550,126†	11,205,298	114,000	196,176	205,432	2,480	2.2
1993	11,767,409	11,159,938	119,768	199,039	212,454	2,719	2.3
1994	11,992,578	11,393,982	120,929	206,183	223,458	2,722	2.3
1995	12,019,156	11,557,811‡	127,800	228,589	233,900	2,847	2.2
1996	12,343,598	12,003,930	129,637	241,377	243,320	2,806	2.2
1997	12,691,835	12,170,375	133,276	240,639	240,001	2,811	2.1

\*IN MILLIONS

\*\*PER 100 MILLION VEHICLE MILES OF TRAVEL

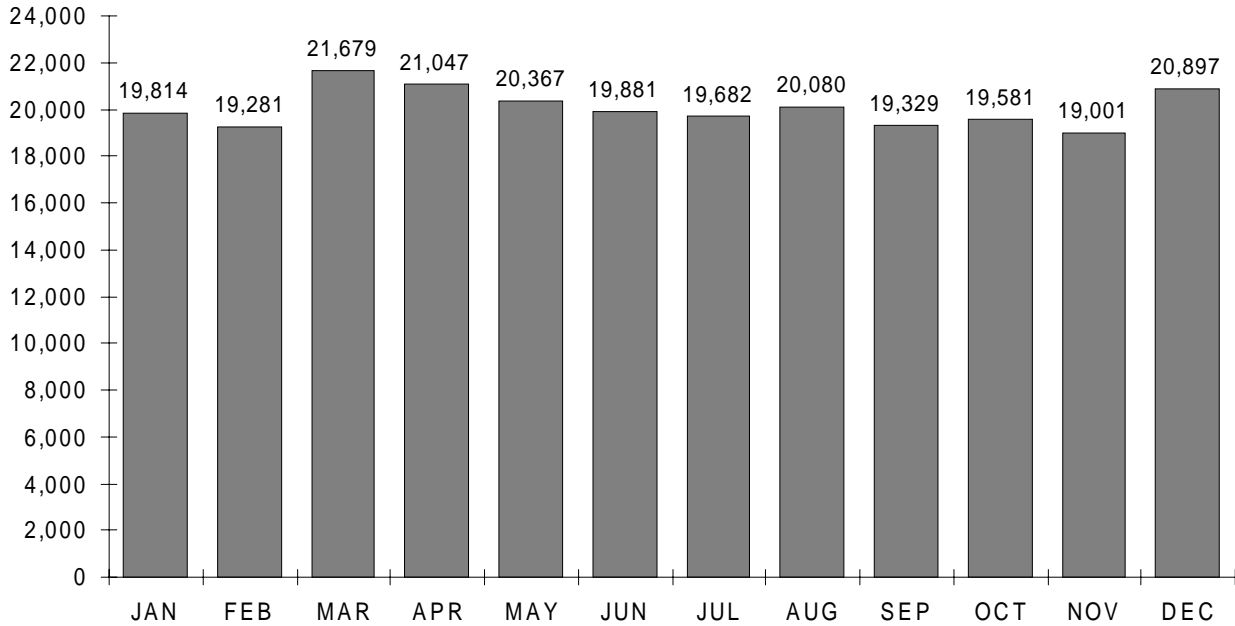
†DECREASE REFLECTS CHANGE IN ACCOUNTING METHOD

‡REVISED

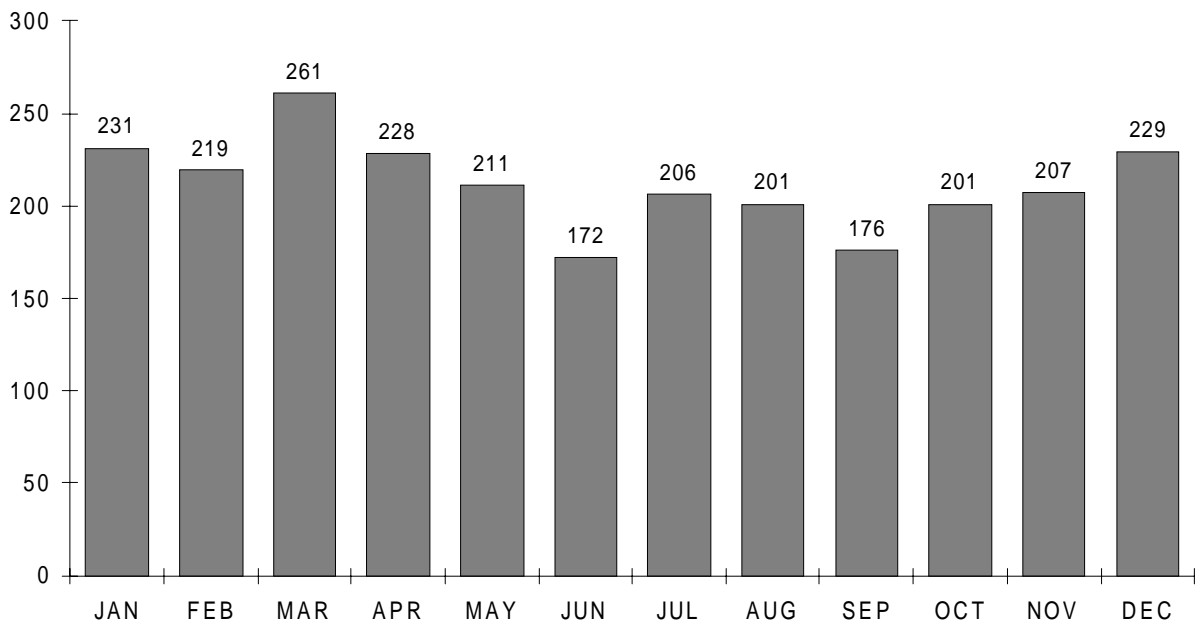
# ► Traffic Crashes by Month

Florida Traffic  
Crash Facts 1 9 9 7

## ALL CRASHES



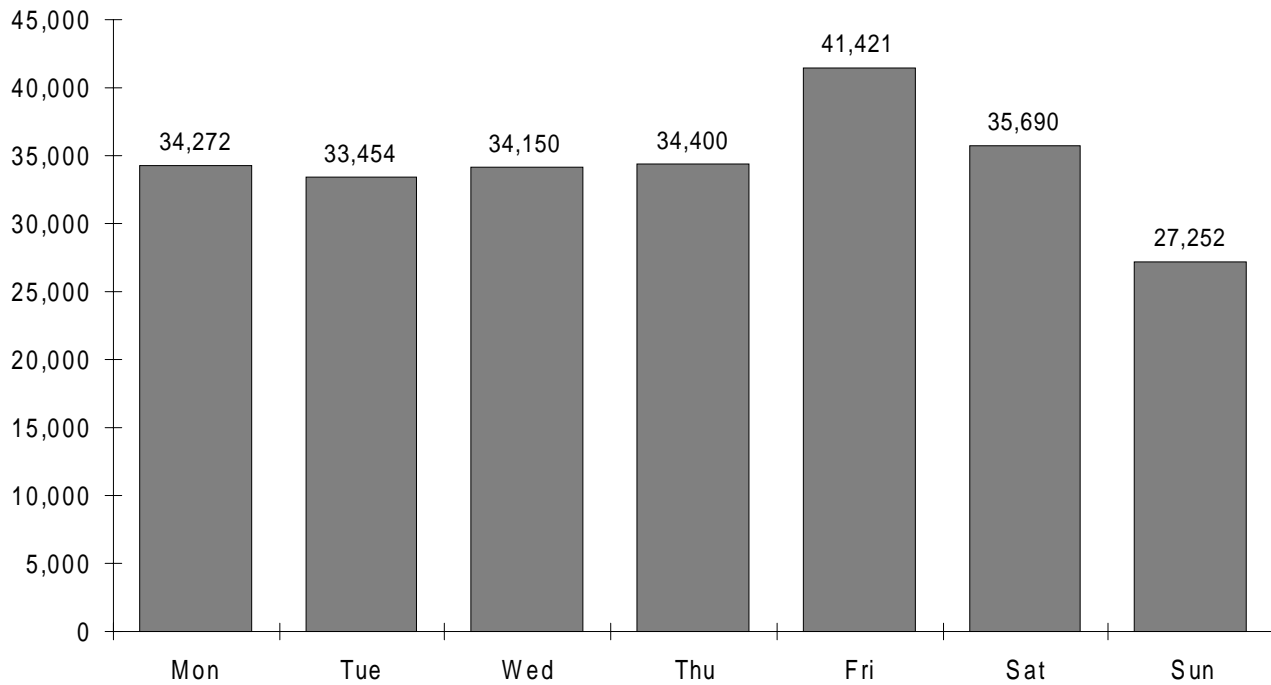
## FATAL CRASHES



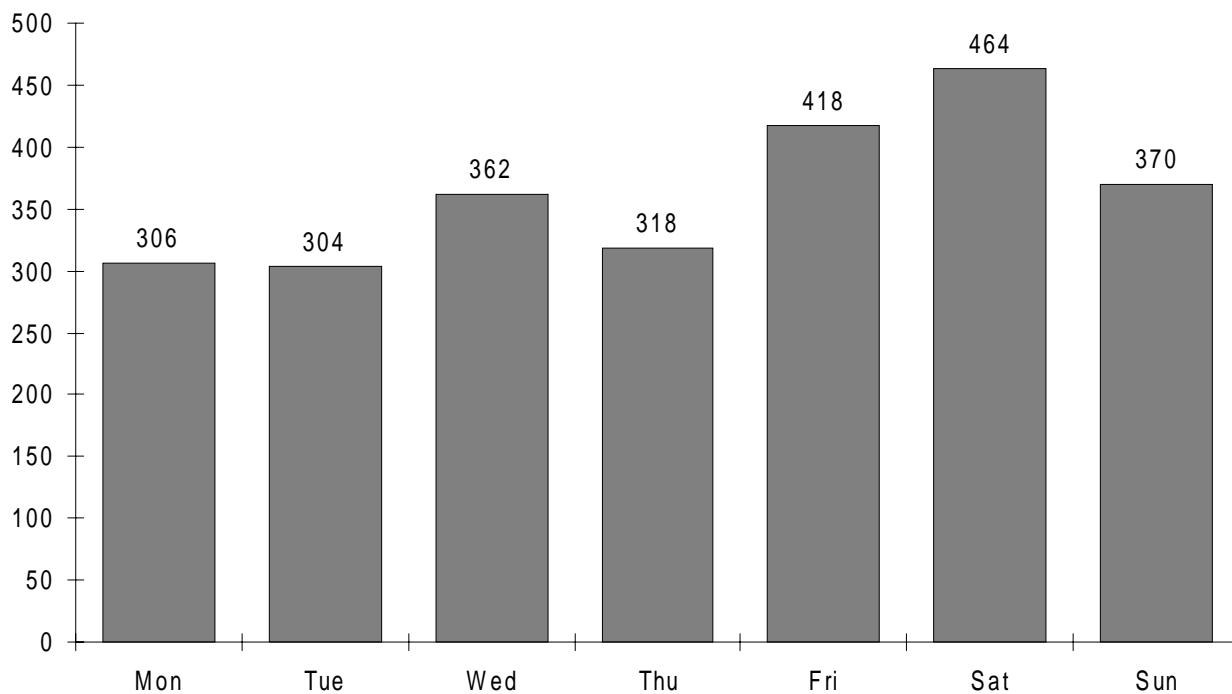
# ▶ Crashes by Day of Week

Florida Traffic  
Crash Facts 1 9 9 7

## ALL CRASHES



## FATAL CRASHES

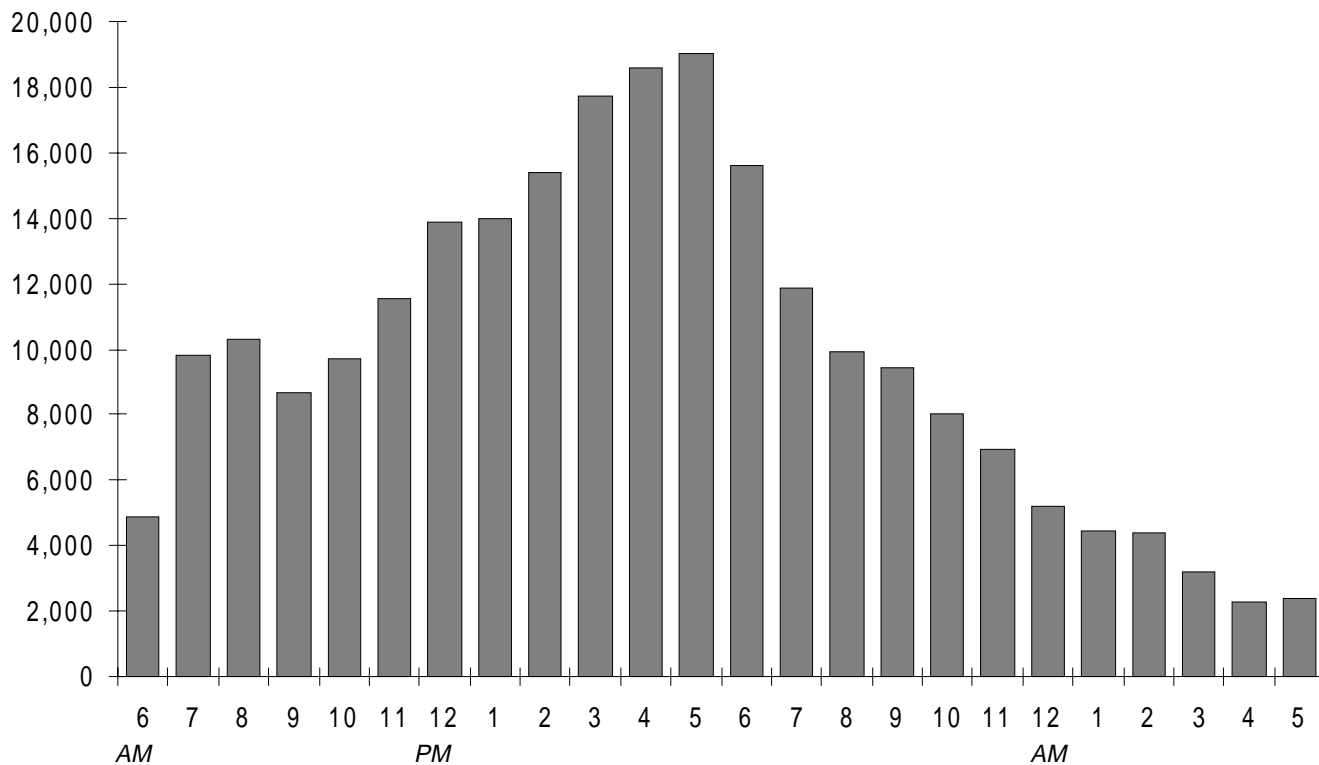




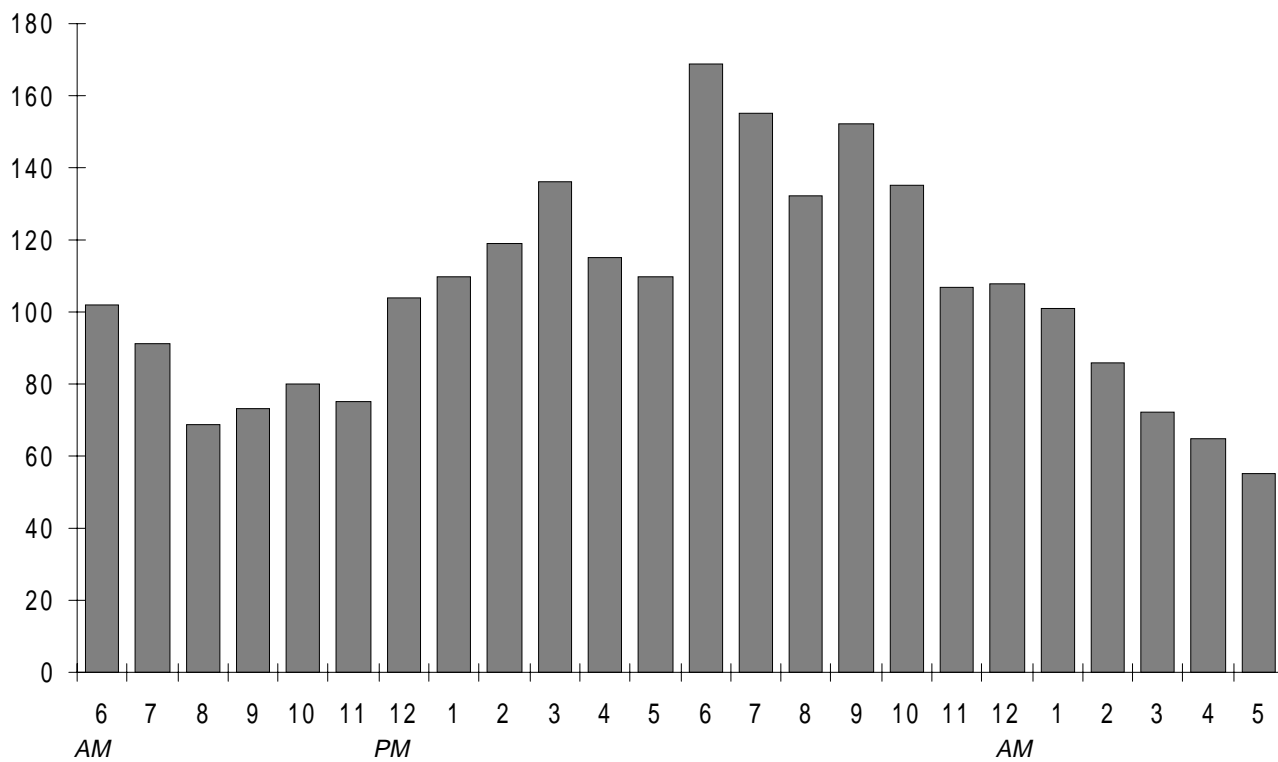
# ▶ Crashes by Time of Day

Florida Traffic  
Crash Facts 1 9 9 7

### ALL CRASHES



### FATAL CRASHES



# ► Holiday Traffic Fatalities

Florida Traffic  
Crash Facts 1997

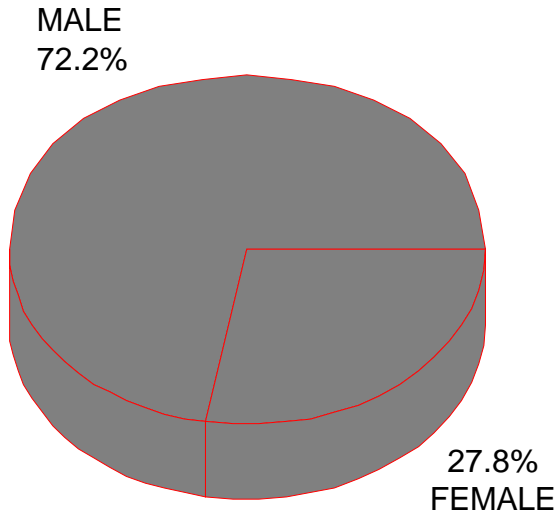
HOLIDAY PERIOD		1994	1995**	1996	1997
<b>New Year</b>	HOURS	78	78	96	48
	FATALITIES	29	21	46	18
	RATE*	.37	.27	.48	.38
<b>Memorial Day</b>	HOURS	78	96	96	96
	FATALITIES	24	35	30	35
	RATE*	.31	.36	.31	.36
<b>Independence Day</b>	HOURS	78	120	120	96
	FATALITIES	28	49	41	27
	RATE*	.36	.41	.34	.28
<b>Labor Day</b>	HOURS	78	96	96	96
	FATALITIES	28	34	22	26
	RATE*	.36	.35	.23	.27
<b>Thanksgiving</b>	HOURS	102	120	120	120
	FATALITIES	39	42	42	45
	RATE*	.38	.35	.35	.38
<b>Christmas</b>	HOURS	78	96	48	48
	FATALITIES	37	29	20	22
	RATE*	.47	.30	.42	.46
<b>All Days in Year</b>	HOURS	8,760	8,760	8,784	8,760
	FATALITIES	2,722	2,847	2,806	2,811
	RATE*	.31	.33	.32	.32

\*FATALITIES PER HOUR

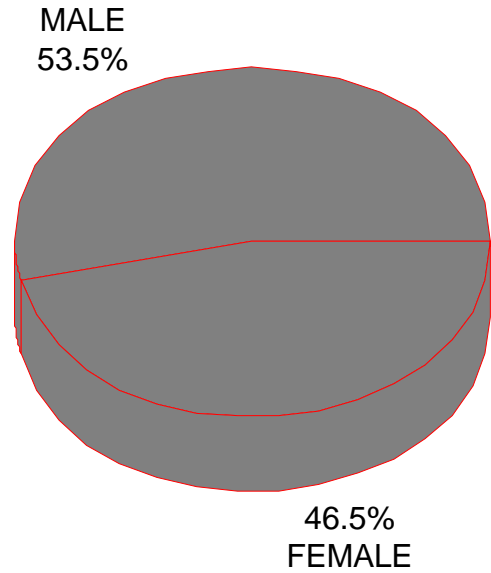
\*\*AFTER NEW YEAR 1995, HOLIDAY PERIODS BEGIN WITH A FULL DAY.  
OTHER YEARS' HOLIDAY PERIODS BEGIN 6:00 PM THE FIRST DAY.

# ► Sex of Drivers in Crashes

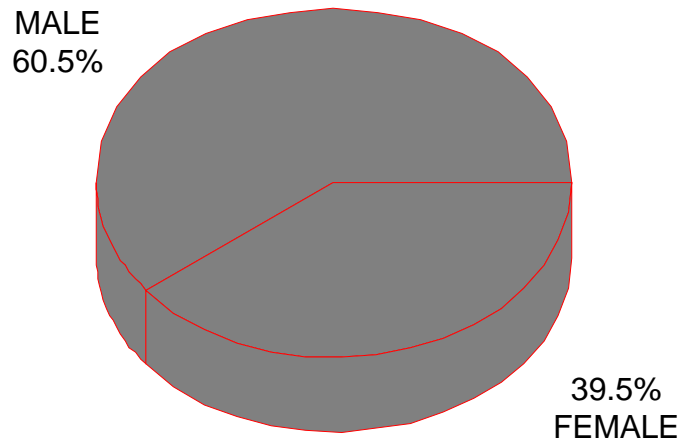
Florida Traffic  
Crash Facts 1 9 9 7



***DRIVERS KILLED***



***DRIVERS INJURED***



***DRIVERS IN ALL CRASHES***

Note: Charts do not include drivers whose sex was not stated.

# ► Age of Drivers in Crashes

Florida Traffic  
Crash Facts 1 9 9 7

## FLORIDA RESIDENT DRIVERS IN ALL CRASHES BY AGE

	DRIVER LICENSES ISSUED	PERCENT	IN ALL CRASHES	PERCENT	DRINKING DRIVERS	PERCENT
Under 15	0	0.00%	2,033	0.55%	39	0.20%
15 to 19	629,058	4.96%	40,584	11.03%	1,166	6.11%
20 to 24	985,419	7.76%	46,405	12.62%	2,612	13.70%
25 to 29	1,265,491	9.97%	44,413	12.07%	2,680	14.05%
30 to 34	1,350,011	10.64%	43,969	11.95%	2,864	15.02%
35 to 39	1,407,078	11.09%	40,810	11.09%	2,906	15.24%
40 to 44	1,271,751	10.02%	34,433	9.36%	2,200	11.54%
45 to 49	1,094,659	8.62%	27,022	7.35%	1,513	7.93%
50 to 54	939,823	7.40%	20,873	5.67%	946	4.96%
55 to 59	757,857	5.97%	15,516	4.22%	648	3.40%
60 to 64	664,767	5.24%	11,978	3.26%	426	2.23%
65 to 69	681,533	5.37%	10,488	2.85%	312	1.64%
70 to 74	651,246	5.13%	9,744	2.65%	200	1.05%
75 to 79	510,174	4.02%	7,459	2.03%	137	0.72%
80 to 84	308,284	2.43%	4,917	1.34%	88	0.46%
85 and over	174,684	1.38%	3,301	0.90%	96	0.50%
Not Stated	0	0.00%	3,907	1.06%	239	1.25%
Total	12,691,835	100.00%	367,852	100.00%	19,072	100.00%

## FLORIDA RESIDENT DRIVERS IN FATAL CRASHES BY AGE

	DRIVER LICENSES ISSUED	PERCENT	IN FATAL CRASHES	PERCENT	DRINKING DRIVERS	PERCENT
Under 15	0	0.00%	24	0.64%	2	0.29%
15 to 19	629,058	4.96%	381	10.20%	47	6.84%
20 to 24	985,419	7.76%	446	11.94%	122	17.76%
25 to 29	1,265,491	9.97%	416	11.14%	103	14.99%
30 to 34	1,350,011	10.64%	373	9.99%	80	11.64%
35 to 39	1,407,078	11.09%	393	10.52%	100	14.56%
40 to 44	1,271,751	10.02%	327	8.76%	62	9.02%
45 to 49	1,094,659	8.62%	240	6.43%	39	5.68%
50 to 54	939,823	7.40%	219	5.87%	38	5.53%
55 to 59	757,857	5.97%	187	5.01%	28	4.08%
60 to 64	664,767	5.24%	130	3.48%	15	2.18%
65 to 69	681,533	5.37%	115	3.08%	11	1.60%
70 to 74	651,246	5.13%	123	3.29%	4	0.58%
75 to 79	510,174	4.02%	132	3.54%	14	2.04%
80 to 84	308,284	2.43%	110	2.95%	11	1.60%
85 and over	174,684	1.38%	79	2.12%	6	0.87%
Not Stated	0	0.00%	39	1.04%	5	0.73%
Total	12,691,835	100.00%	3,734	100.00%	687	100.00%

# Selected Age Groups\*

Florida Traffic  
Crash Facts 1 9 9 7

Age of Driver	Driver Licenses Issued	%	Drivers In All Crashes	%	Drinking Drivers In All Crashes	%	Drivers In Fatal Crashes	%	Drinking Drivers In Fatal Crashes	%
Under 15	0	0.00%	2,033	0.55%	39	0.20%	24	0.64%	2	0.29%
15	54,967	0.43%	981	0.27%	33	0.17%	12	0.32%	2	0.29%
16	112,673	0.89%	7,353	2.00%	115	0.60%	58	1.55%	5	0.73%
17	139,145	1.10%	9,950	2.70%	222	1.16%	95	2.54%	15	2.18%
18	155,109	1.22%	11,391	3.10%	345	1.81%	126	3.37%	13	1.89%
19	167,164	1.32%	10,909	2.97%	451	2.36%	90	2.41%	12	1.75%
20	181,554	1.43%	9,991	2.72%	452	2.37%	89	2.38%	21	3.06%
21	186,530	1.47%	9,382	2.55%	570	2.99%	86	2.30%	28	4.08%
22	198,908	1.57%	9,139	2.48%	571	2.99%	103	2.76%	29	4.22%
23	205,728	1.62%	8,768	2.38%	505	2.65%	90	2.41%	29	4.22%
24	212,699	1.68%	9,125	2.48%	514	2.70%	78	2.09%	15	2.18%
25	232,530	1.83%	9,222	2.51%	555	2.91%	73	1.96%	17	2.47%
26	257,715	2.03%	9,341	2.54%	607	3.18%	88	2.36%	19	2.77%
27	266,122	2.10%	9,093	2.47%	516	2.71%	98	2.62%	24	3.49%
28	256,736	2.02%	8,548	2.32%	502	2.63%	87	2.33%	23	3.35%
29	252,388	1.99%	8,209	2.23%	500	2.62%	70	1.87%	20	2.91%
70	137,656	1.08%	2,107	0.57%	51	0.27%	29	0.78%	1	0.15%
71	133,029	1.05%	1,938	0.53%	43	0.23%	25	0.67%	2	0.29%
72	130,298	1.03%	2,026	0.55%	42	0.22%	22	0.59%	1	0.15%
73	128,871	1.02%	1,851	0.50%	30	0.16%	24	0.64%	0	0.00%
74	121,392	0.96%	1,822	0.50%	34	0.18%	23	0.62%	0	0.00%
75	115,600	0.91%	1,731	0.47%	35	0.18%	22	0.59%	2	0.29%
76	113,890	0.90%	1,578	0.43%	21	0.11%	28	0.75%	4	0.58%
77	103,365	0.81%	1,543	0.42%	32	0.17%	28	0.75%	2	0.29%
78	90,484	0.71%	1,329	0.36%	32	0.17%	26	0.70%	4	0.58%
79	86,835	0.68%	1,278	0.35%	17	0.09%	28	0.75%	2	0.29%
80	77,132	0.61%	1,229	0.33%	25	0.13%	22	0.59%	3	0.44%
81	68,353	0.54%	1,118	0.30%	23	0.12%	19	0.51%	4	0.58%
82	61,652	0.49%	953	0.26%	18	0.09%	20	0.54%	1	0.15%
83	54,730	0.43%	817	0.22%	11	0.06%	21	0.56%	2	0.29%
84	46,417	0.37%	800	0.22%	11	0.06%	28	0.75%	1	0.15%
85 and Over	174,684	1.38%	3,301	0.90%	96	0.50%	79	2.12%	6	0.87%

\* License data on pages 12 and 13 are numbers of Florida driver licenses.  
Driver data are Florida-resident drivers in crashes.

# ► Safety Equipment Use\*

Florida Traffic  
Crash Facts 1 9 9 7

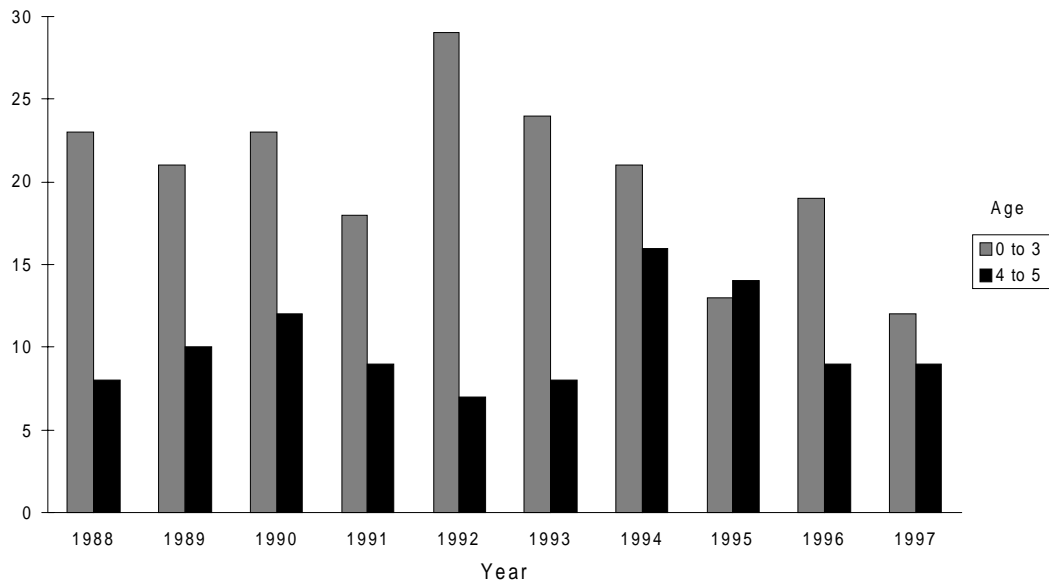
	No Injury	Possible Injury	Non-Incapacitating Injury	Incapacitating Injury	Fatal	% of Fatalities	Total
<b>VEHICLE OCCUPANT</b>							
With Safety Belts	267,425	95,983	43,029	15,112	594	30.2%	422,143
With Safety Belts & Air Bags	19,087	10,459	7,971	2,672	146	7.4%	40,335
With Air Bags (Only)	617	751	536	294	49	2.5%	2,247
With Child Safety Restraint	8,746	2,131	727	174	14	0.7%	11,792
Not Using Safety Equipment	45,344	16,782	14,892	8,230	1,161	59.1%	86,409
<b>TOTAL</b>	<b>341,219</b>	<b>126,106</b>	<b>67,155</b>	<b>26,482</b>	<b>1,964</b>	<b>100.0%</b>	<b>562,926</b>
<b>MOTORCYCLIST</b>							
With Safety Helmet	263	530	1,443	1,010	139	85.3%	3,385
Without Safety Helmet	249	262	428	252	24	14.7%	1,215
<b>TOTAL</b>	<b>512</b>	<b>792</b>	<b>1,871</b>	<b>1,262</b>	<b>163</b>	<b>100.0%</b>	<b>4,600</b>
<b>BICYCLIST</b>							
With Safety Helmet	25	158	265	85	3	2.6%	536
Without Safety Helmet	481	1,667	2,590	928	111	97.4%	5,777
<b>TOTAL</b>	<b>506</b>	<b>1,825</b>	<b>2,855</b>	<b>1,013</b>	<b>114</b>	<b>100.0%</b>	<b>6,313</b>

\*Does not include cases with safety equipment use or injury level not stated.

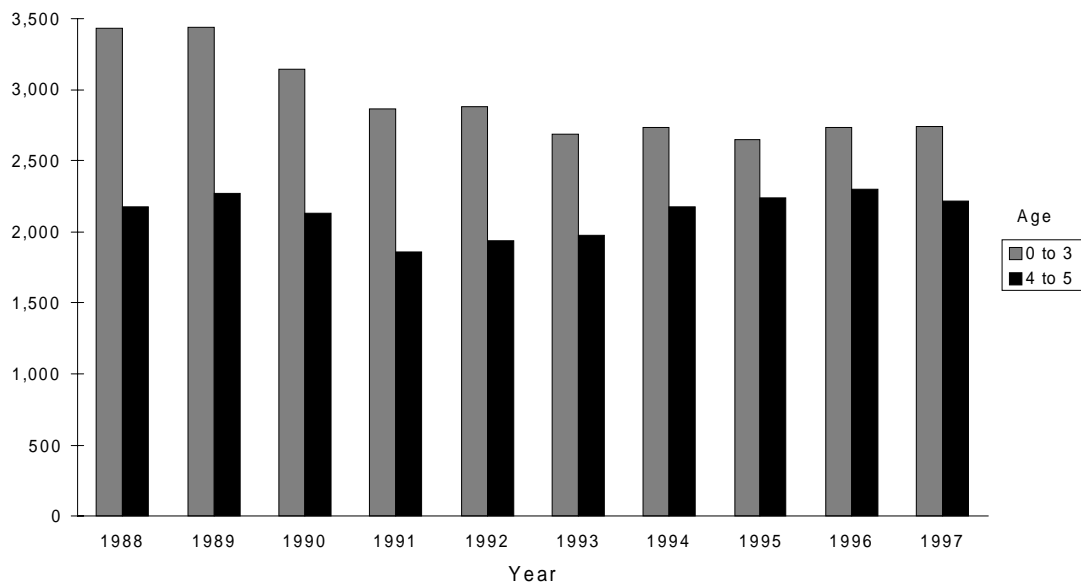
# ▶ Child Passengers\*

Florida Traffic  
Crash Facts 1 9 9 7

### Child Passengers Killed



### Child Passengers Injured

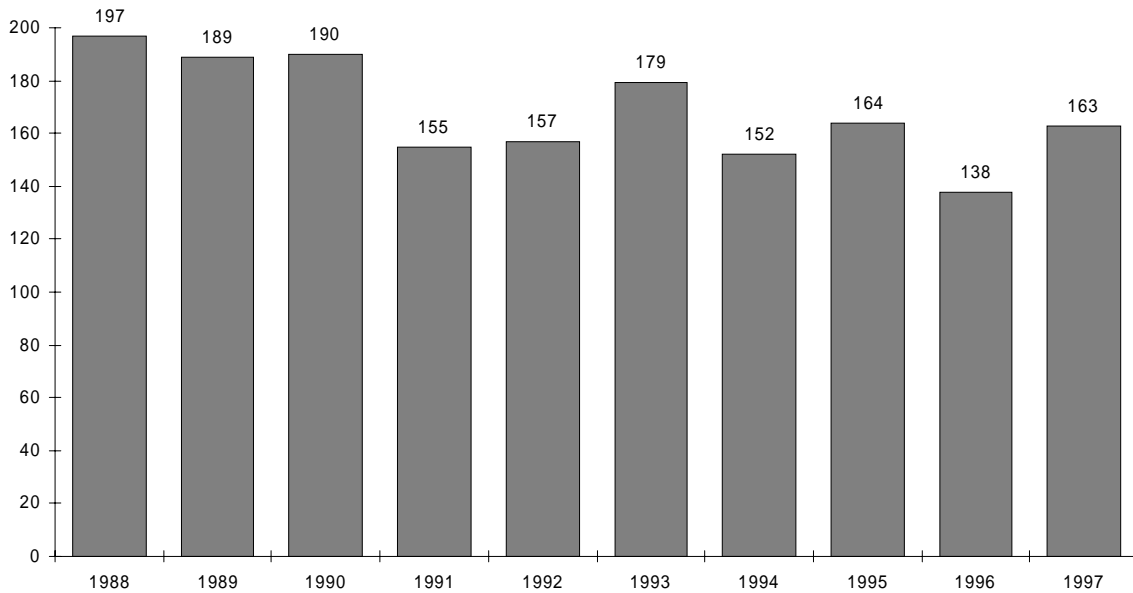


\*Does not include passengers of bicycles, motorcycles, buses, or all-terrain vehicles.

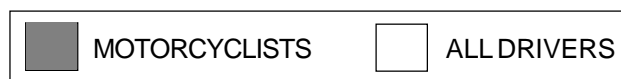
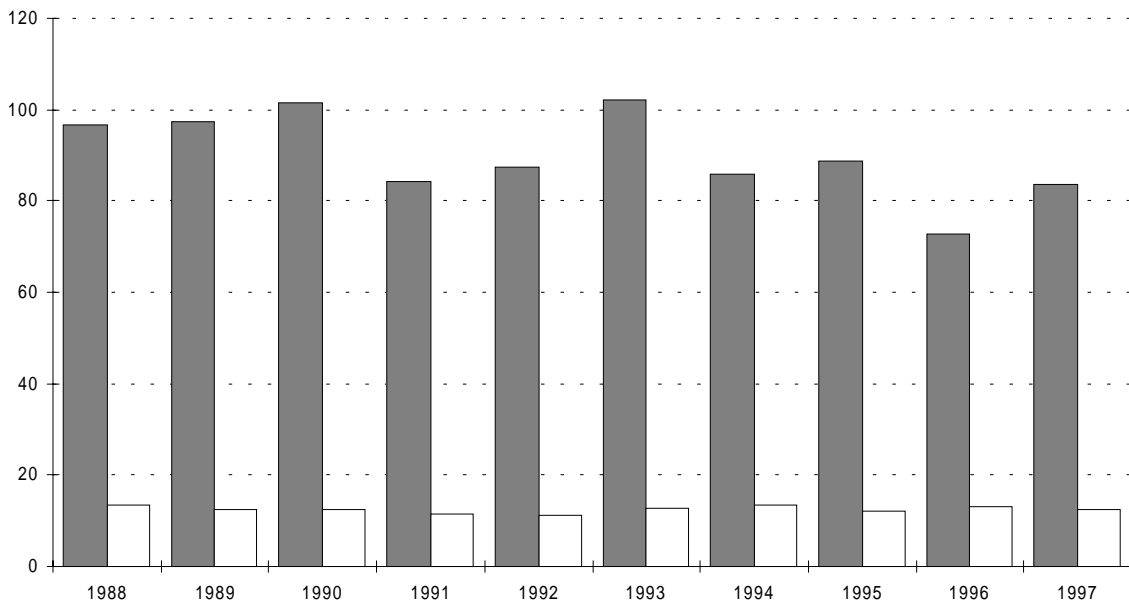
# Motorcyclist Fatality Trends

Florida Traffic Crash Facts 1997

### MOTORCYCLISTS KILLED



### MOTORCYCLIST FATALITY RATE\* (COMPARED TO ALL MOTOR VEHICLE DRIVERS)



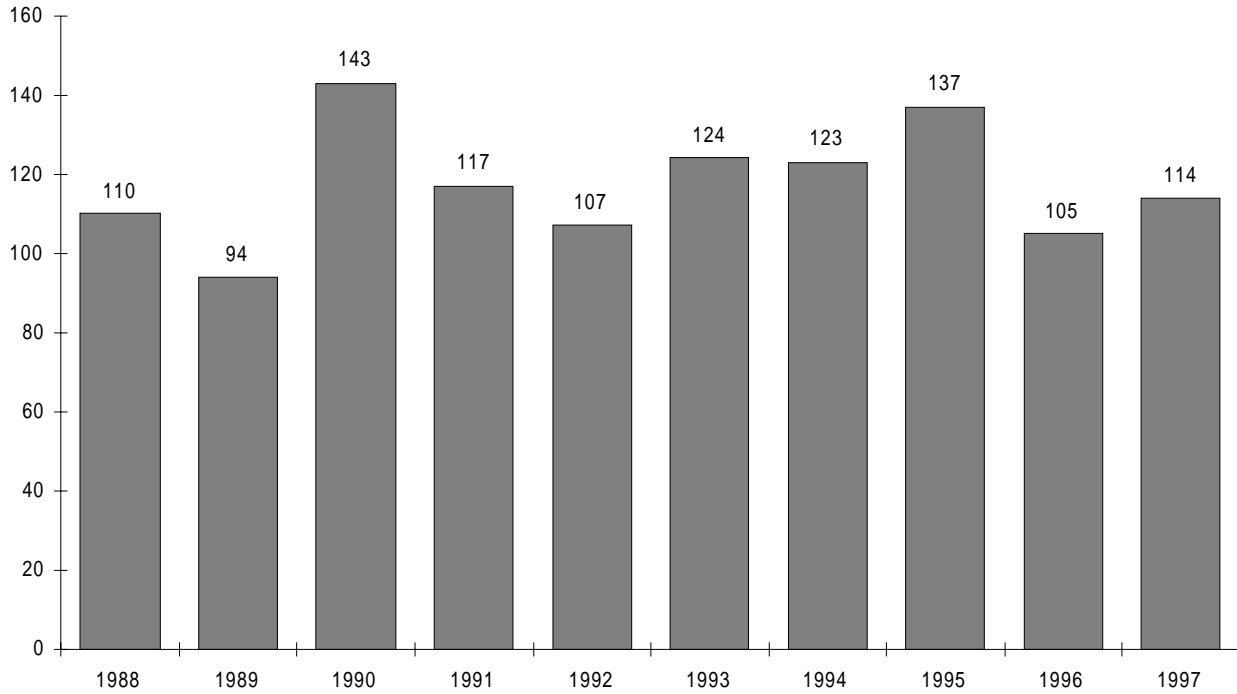
\* PER 100,000 REGISTERED VEHICLES



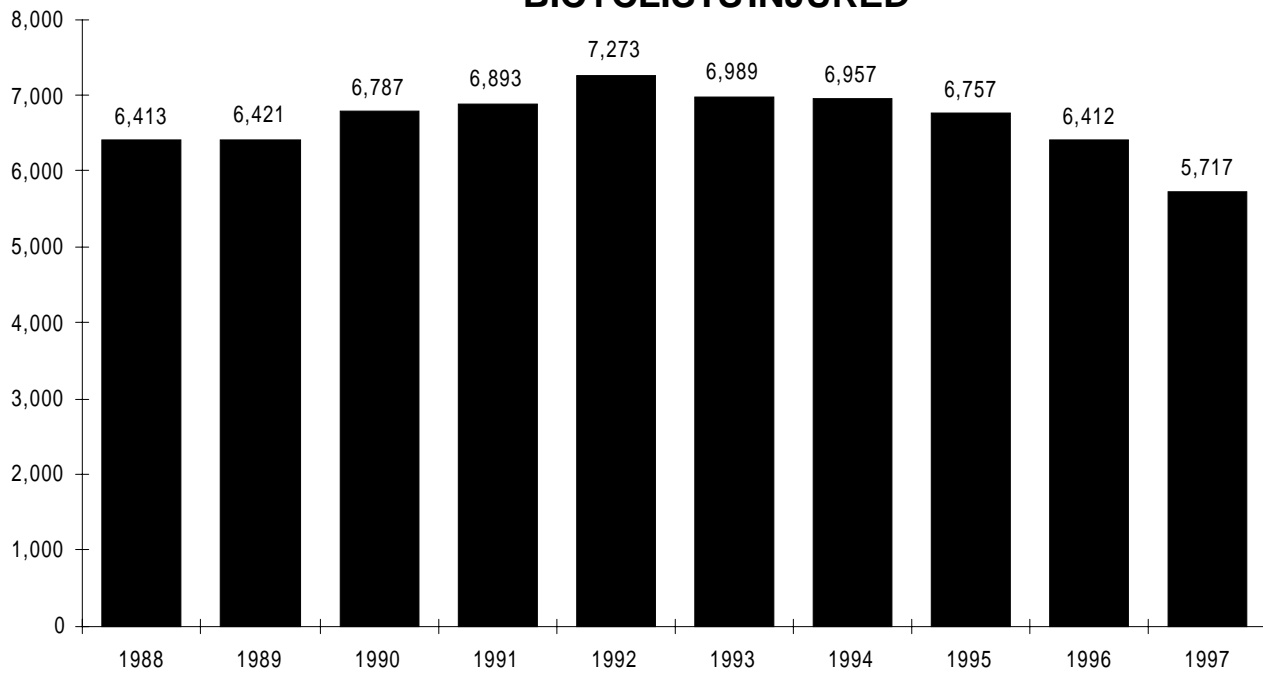
# ► Bicyclist Crash Trends

Florida Traffic  
Crash Facts 1 9 9 7

## BICYCLISTS KILLED



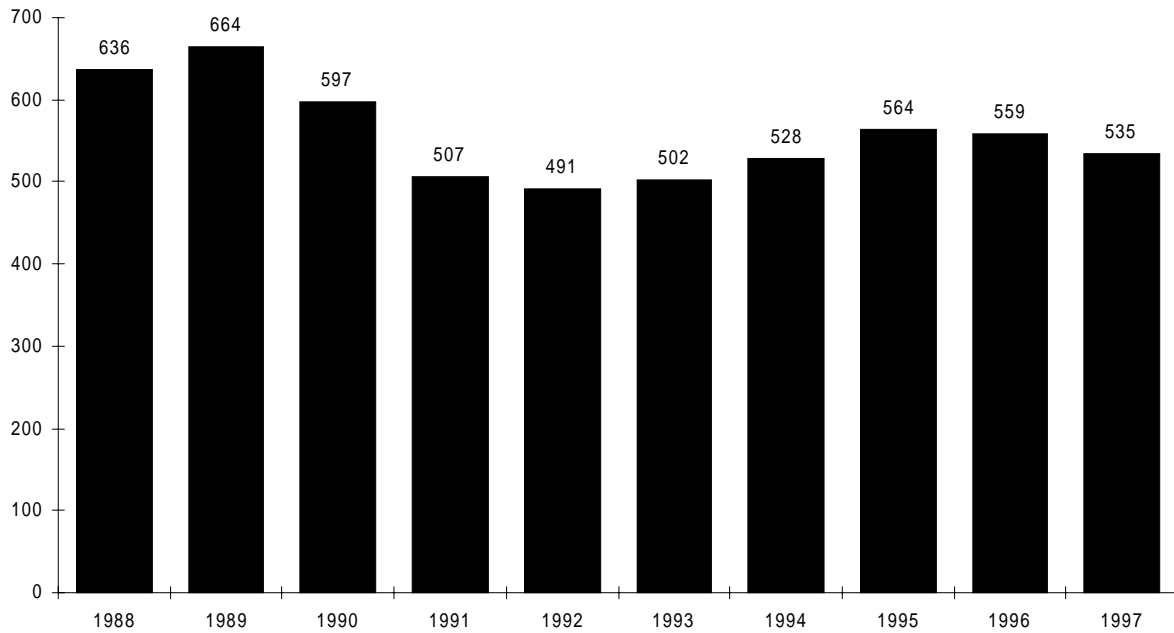
## BICYCLISTS INJURED



# ▶ Pedestrian Fatality Trends

Florida Traffic  
Crash Facts 1997

### PEDESTRIANS KILLED



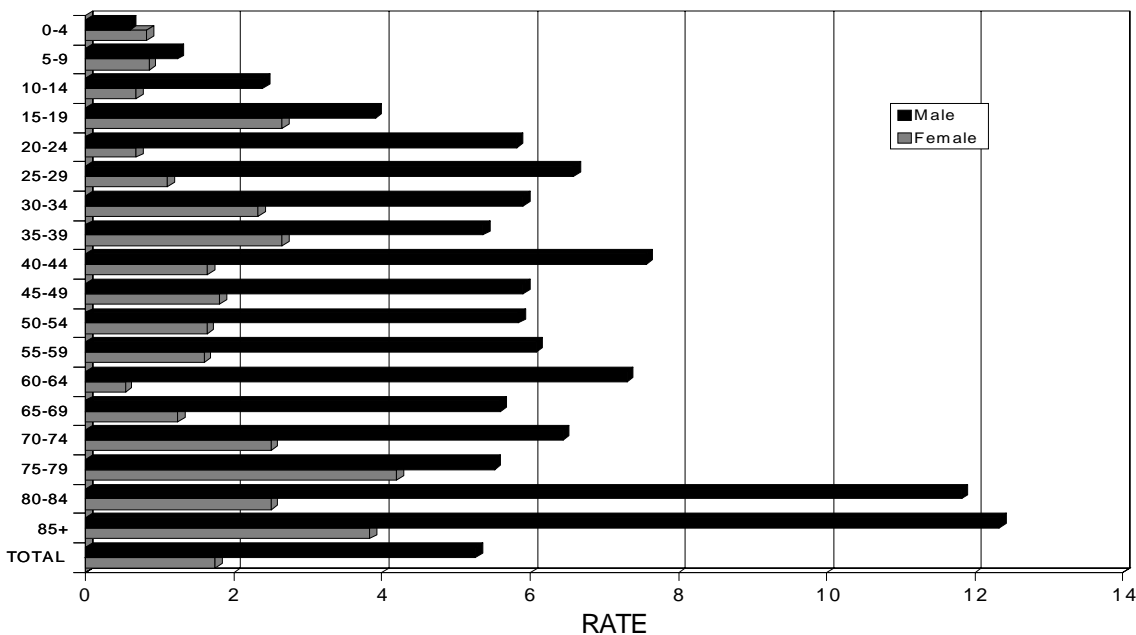
### PEDESTRIAN FATALITY RATE\*



\*FLORIDA RESIDENT PEDESTRIAN FATALITIES PER 100,000 RESIDENTS

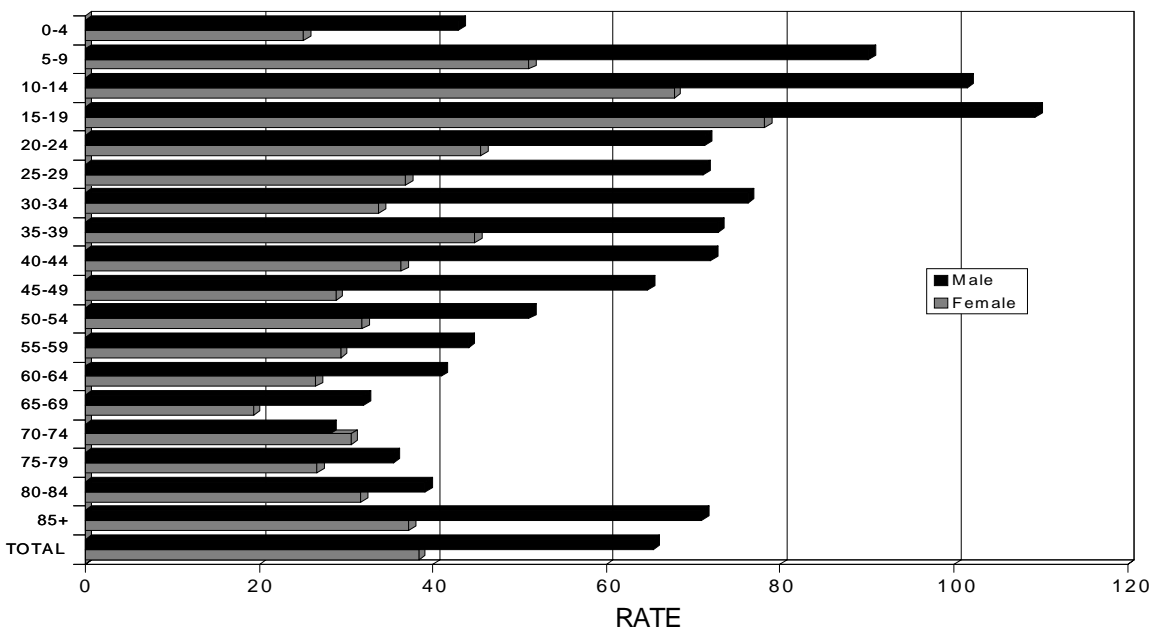
# ► Pedestrian Crash Rates

## PEDESTRIAN FATALITY RATE\* BY SEX AND AGE



\*RESIDENT PEDESTRIANS KILLED PER 100,000 POPULATION IN AGE GROUP

## PEDESTRIAN INJURY RATE\* BY SEX AND AGE



\*RESIDENT PEDESTRIANS INJURED PER 100,000 POPULATION IN AGE GROUP

# ► Pedestrian Behavior and Pickup Truck Passengers

Florida Traffic  
Crash Facts 1 9 9 7

## Pedestrian Behavior in Crashes

Action	Total	%	Pedestrian		Injured	
			Fatalities	%	Pedestrians	%
Crossing At Intersection	1,128	16.6	58	10.8	1,067	12.8
Crossing Not At Intersection	1,361	20.0	281	52.5	3,210	38.5
Walking With Traffic	490	7.2	48	9.0	472	5.7
Walking Against Traffic	214	3.2	7	1.3	196	2.4
Standing Or Playing In Road	534	7.9	35	6.5	497	6.0
Pushing Or Working On Vehicle	39	0.6	1	0.2	38	0.5
Other Working In Road	125	1.8	3	0.6	120	1.4
Other	2,899	42.7	102	19.1	2,729	32.8
<b>Total</b>	<b>6,790</b>	<b>100.0</b>	<b>535</b>	<b>100.0</b>	<b>8,329</b>	<b>100.0</b>

## Passengers Riding in Body of Light (Pickup) Trucks

Age	Total	Injured	Killed
0 to 4	21	7	0
5 to 9	67	22	0
10 to 14	129	62	1
15 to 19	244	124	0
21 to 24	94	40	2
25 to 29	43	23	1
30 to 34	48	27	1
35 to 39	34	13	1
40 to 44	23	12	0
45 to 49	14	8	1
50 to 54	8	4	0
55 to 59	5	3	0
60 to 64	3	1	1
65 to 69	0	0	0
70 to 74	1	0	0
75 to 79	1	1	0
80 to 84	0	0	0
85 and Over	0	0	0
Not Stated	18	5	0
<b>Total</b>	<b>753</b>	<b>352</b>	<b>8</b>

## ► Contributing Causes

Florida Traffic  
Crash Facts 1 9 9 7

This table lists contributing causes reported by the investigating officer for drivers in traffic crashes. There can be up to three contributing causes per driver. Percentage figures compare the relative frequency of these causes.

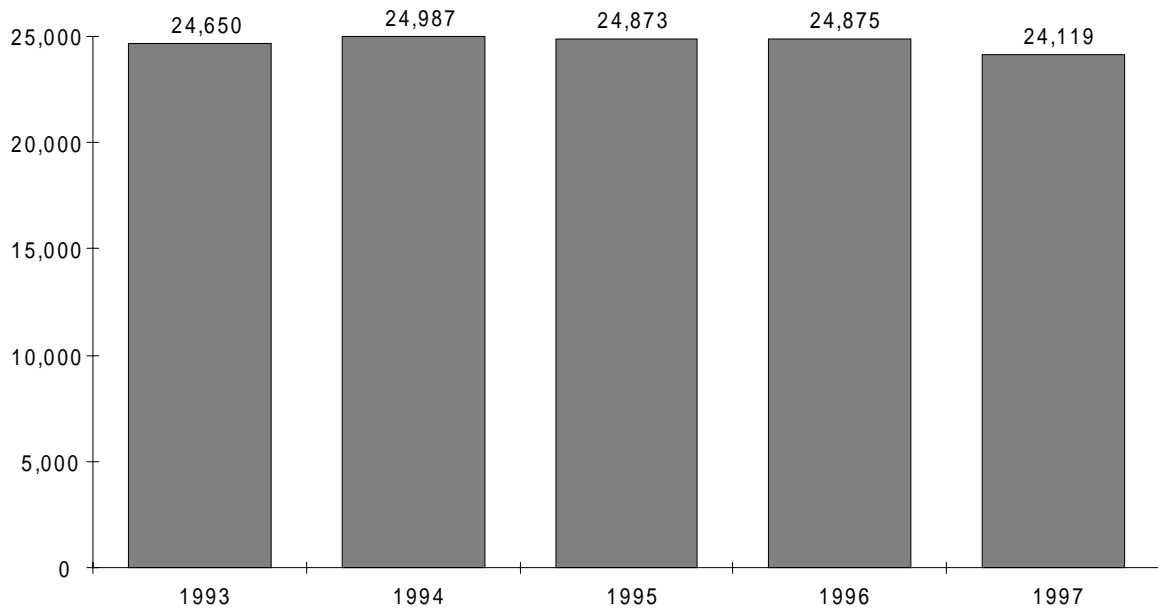
Reported Contributing Causes	Frequency	
	In All Crashes	In Fatal Crashes
No Improper Driving/Action *	49.85%	37.35%
Careless Driving	17.94%	16.22%
Failed to Yield Right-of-Way	10.81%	9.76%
Disregarded Traffic Signal	2.21%	2.13%
Speed Too Fast	1.99%	9.67%
Followed Too Closely	1.86%	0.13%
Alcohol - Under Influence	1.79%	3.71%
Improper Turn	1.73%	1.41%
Improper Lane Change	1.39%	1.28%
Disregarded Stop Sign	0.93%	1.56%
Driving Wrong Side/Way	0.77%	3.79%
Improper Backing	0.77%	0.13%
Failed To Maintain Equipment/Vehicle	0.57%	0.68%
Improper Passing	0.31%	0.92%
Alcohol & Drugs - Under Influence	0.21%	0.40%
Drugs - Under Influence	0.05%	0.06%
All Other	6.80%	10.80%

\* Drivers in this category typically represent those involved in crashes attributed to other drivers. At least one involved driver is reported contributory in about 95% of crashes.

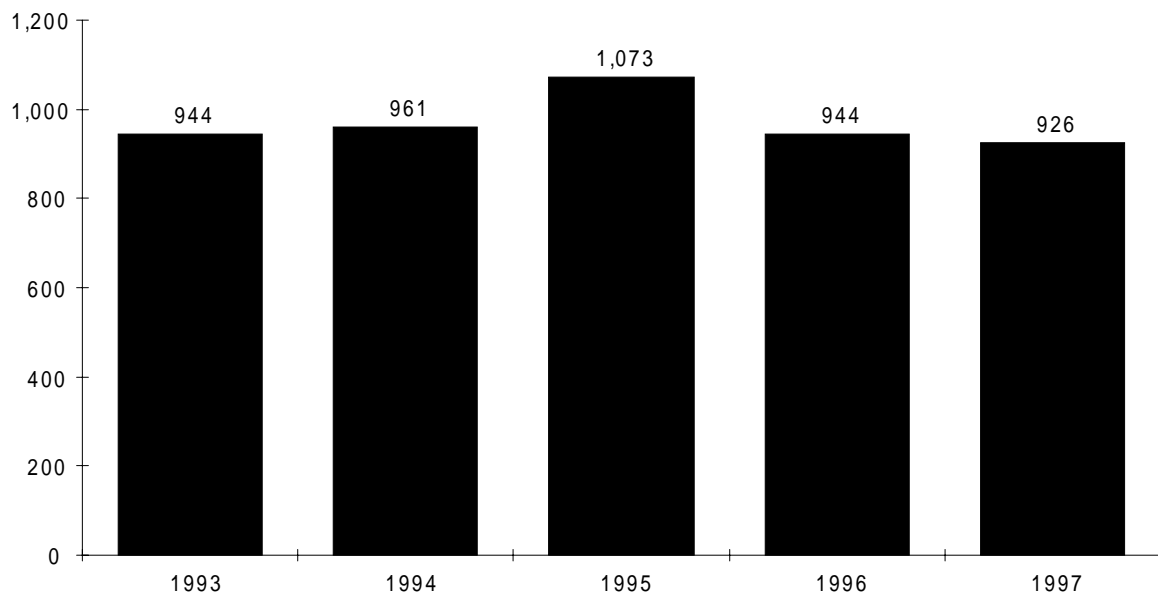
# ▶ Alcohol-Related Crash Trends

Florida Traffic  
Crash Facts 1997

## ALCOHOL-RELATED CRASHES



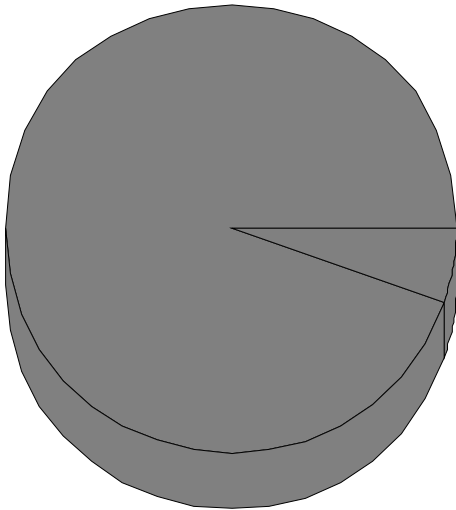
## ALCOHOL-RELATED FATALITIES



# ▶ Alcohol And Drug Use

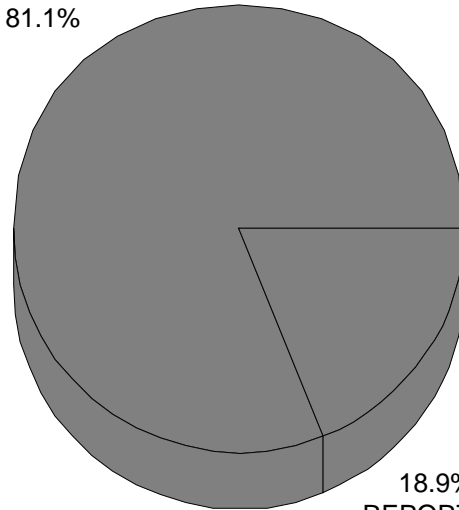
## DRIVERS

NO  
REPORTED  
USE  
94.7%



ALL CRASHES

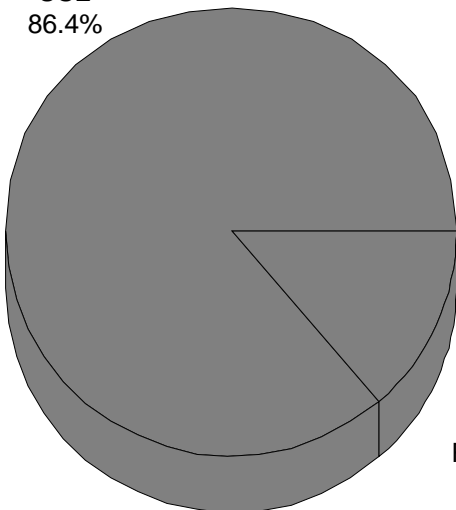
NO  
REPORTED  
USE  
81.1%



FATAL CRASHES

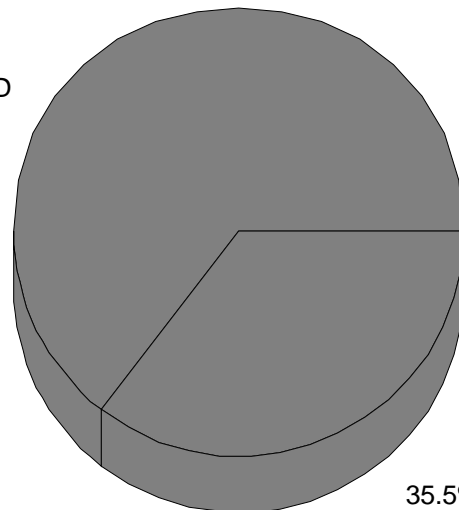
## PEDESTRIANS

NO  
REPORTED  
USE  
86.4%



ALL CRASHES

NO  
REPORTED  
USE  
64.5%



FATAL CRASHES

# ► County/City Data

Florida Traffic  
Crash Facts 1 9 9 7





# ► Fatality Trend by County

Florida Traffic  
Crash Facts 1 9 9 7

COUNTY	1993	1994	1995	1996	1997	COUNTY	1993	1994	1995	1996	1997
ALACHUA	42	42	31	45	43	LEVY	4	6	5	9	8
BAKER	4	5	5	8	11	LIBERTY	0	4	1	1	2
BAY	17	26	33	32	34	MADISON	7	4	17	5	8
BRADFORD	10	7	7	4	6	MANATEE	42	48	51	55	64
BREVARD	68	62	87	74	84	MARION	79	56	79	49	76
BROWARD	210	215	210	210	227	MARTIN	21	32	26	20	28
CALHOUN	2	9	3	9	2	MIAMI-DADE	365	307	333	326	309
CHARLOTTE	26	18	23	26	26	MONROE	25	26	22	21	17
CITRUS	23	21	35	22	23	NASSAU	14	14	18	13	17
CLAY	16	20	20	20	13	OKALOOSA	24	21	28	29	17
COLLIER	46	35	49	44	55	OKEECHOBEE	16	11	6	12	22
COLUMBIA	26	22	14	27	26	ORANGE	117	120	144	140	126
DE SOTO	15	11	12	9	7	OSCEOLA	25	44	40	43	49
DIXIE	9	6	2	5	9	PALMBEACH	187	200	200	199	180
DUVAL	103	111	117	122	113	PASCO	67	74	67	60	63
ESCAMBIA	40	55	47	40	47	PINELLAS	100	106	122	128	128
FLAGLER	10	7	11	10	13	POLK	118	90	129	103	102
FRANKLIN	2	2	2	1	5	PUTNAM	18	25	21	17	29
GADSDEN	16	16	14	17	22	ST. JOHNS	25	12	20	22	23
GILCHRIST	5	3	3	3	3	ST. LUCIE	29	43	40	43	29
GLADES	7	4	6	14	7	SANTA ROSA	26	16	27	18	26
GULF	4	3	2	3	4	SARASOTA	35	44	46	49	42
HAMILTON	8	9	8	5	11	SEMINOLE	30	36	40	30	41
HARDEE	13	7	8	11	2	SUMTER	15	8	8	24	12
HENDRY	8	19	18	15	15	SUWANNEE	12	17	15	15	13
HERNANDO	32	35	17	39	23	TAYLOR	3	6	9	4	7
HIGHLANDS	35	19	30	20	23	UNION	6	4	1	1	1
HILLSBOROUGH	168	198	203	188	190	VOLUSIA	100	108	80	112	86
HOLMES	12	9	8	5	7	WAKULLA	8	7	7	6	8
INDIANRIVER	20	19	25	24	25	WALTON	18	11	14	8	21
JACKSON	12	14	12	17	14	WASHINGTON	12	6	9	7	5
JEFFERSON	10	7	6	14	1	UNKNOWN	1	0	0	1	5
LAFAYETTE	2	4	0	5	0						
LAKE	38	41	44	39	37						
LEE	82	98	70	78	89						
LEON	29	37	40	31	30	STATEWIDE	2,719	2,722	2,847	2,806	2,811

# ► Crash Trend by County

Florida Traffic  
Crash Facts 1997

COUNTY	1993	1994	1995	1996	1997	COUNTY	1993	1994	1995	1996	1997
ALACHUA	3,336	3,349	3,414	3,671	4,074	LEVY	263	290	303	370	374
BAKER	169	163	226	255	242	LIBERTY	37	62	64	64	65
BAY	1,718	1,777	2,085	2,238	2,224	MADISON	227	192	217	221	232
BRADFORD	332	367	369	324	299	MANATEE	2,946	3,009	3,190	3,362	3,366
BREVARD	4,557	4,700	4,650	4,917	4,747	MARION	2,512	2,725	2,967	2,842	2,694
BROWARD	23,805	25,374	25,958	27,508	26,849	MARTIN	1,231	1,316	1,455	1,511	1,498
CALHOUN	113	97	102	119	123	MIAMI-DADE	36,325	36,053	43,233	48,634	47,794
CHARLOTTE	1,339	1,436	1,358	1,497	1,445	MONROE	1,254	1,165	1,123	1,185	1,250
CITRUS	899	951	1,060	1,121	1,014	NASSAU	472	398	401	443	452
CLAY	675	803	1,006	1,113	995	OKALOOSA	1,633	1,626	1,671	1,793	1,608
COLLIER	2,057	2,321	2,392	2,500	2,516	OKEECHOBEE	400	332	365	427	342
COLUMBIA	541	568	575	710	736	ORANGE	11,891	12,735	12,870	14,398	15,920
DE SOTO	265	297	315	313	301	OSCEOLA	1,514	1,719	1,865	2,027	2,116
DIXIE	129	90	145	148	161	PALM BEACH	13,388	14,448	14,929	14,756	13,921
DUVAL	11,575	12,233	13,053	13,005	13,273	PASCO	2,778	2,813	3,344	4,088	3,833
ESCAMBIA	3,448	3,612	3,985	4,195	4,330	PINELLAS	10,471	10,971	11,919	12,359	12,529
FLAGLER	307	338	360	385	382	POLK	5,510	5,822	6,735	7,357	7,394
FRANKLIN	75	81	108	126	117	PUTNAM	764	885	869	949	1,039
GADSDEN	609	613	607	727	706	ST. JOHNS	1,273	1,321	1,297	1,448	1,427
GILCHRIST	65	78	90	115	117	ST. LUCIE	2,011	2,115	2,200	2,251	2,091
GLADES	117	115	93	95	108	SANTA ROSA	872	960	1,036	1,134	1,148
GULF	94	71	88	82	182	SARASOTA	2,900	3,043	3,856	4,670	4,481
HAMILTON	128	139	126	144	202	SEMINOLE	2,302	3,020	3,326	3,616	3,458
HARDEE	274	305	266	276	218	SUMTER	344	439	394	429	461
HENDRY	350	363	330	340	346	SUWANNEE	291	298	296	380	465
HERNANDO	910	1,005	993	1,121	1,099	TAYLOR	263	291	271	263	277
HIGHLANDS	733	660	769	680	637	UNION	76	83	87	91	72
HILLSBOROUGH	17,168	16,259	21,071	21,445	21,335	VOLUSIA	5,902	5,987	6,016	6,171	6,403
HOLMES	123	151	151	150	123	WAKULLA	140	163	194	219	193
INDIAN RIVER	1,079	1,091	1,191	1,215	1,215	WALTON	412	389	384	478	526
JACKSON	452	482	458	535	458	WASHINGTON	156	146	182	202	201
JEFFERSON	170	167	178	175	154	UNKNOWN	190	204	144	283	454
LAFAYETTE	41	31	46	60	47	STATEWIDE	199,039	206,183	228,589	241,377	240,639
LAKE	1,537	1,710	1,677	1,828	1,835						
LEE	4,937	4,855	7,170	4,810	4,688						
LEON	4,164	4,511	4,921	5,013	5,257						

# ▶ Alcohol-Related Fatalities by County

Florida Traffic  
Crash Facts 1 9 9 7

COUNTY	Total Fatalities	Alcohol-Related Fatalities	Alcohol-Related Fatalities as Percent of Total	COUNTY	Total Fatalities	Alcohol-Related Fatalities	Alcohol-Related Fatalities as Percent of Total
ALACHUA	43	20	46.51	LEVY	8	4	50.00
BAKER	11	5	45.45	LIBERTY	2	2	100.00
BAY	34	11	32.35	MADISON	8	1	12.50
BRADFORD	6	2	33.33	MANATEE	64	32	50.00
BREVARD	84	30	35.71	MARION	76	32	42.11
BROWARD	227	62	27.31	MARTIN	28	5	17.86
CALHOUN	2	0	0.00	MIAMI-DADE	309	59	19.09
CHARLOTTE	26	5	19.23	MONROE	17	12	70.59
CITRUS	23	14	60.87	NASSAU	17	8	47.06
CLAY	13	4	30.77	OKALOOSA	17	5	29.41
COLLIER	55	16	29.09	OKEECHOBEE	22	12	54.55
COLUMBIA	26	11	42.31	ORANGE	126	43	34.13
DE SOTO	7	3	42.86	OSCEOLA	49	15	30.61
DIXIE	9	4	44.44	PALM BEACH	180	56	31.11
DUVAL	113	23	20.35	PASCO	63	30	47.62
ESCAMBIA	47	22	46.81	PINELLAS	128	39	30.47
FLAGLER	13	5	38.46	POLK	102	39	38.24
FRANKLIN	5	3	60.00	PUTNAM	29	17	58.62
GADSDEN	22	8	36.36	ST. JOHNS	23	10	43.48
GILCHRIST	3	1	33.33	ST. LUCIE	29	9	31.03
GLADES	7	4	57.14	SANTA ROSA	26	16	61.54
GULF	4	1	25.00	SARASOTA	42	12	28.57
HAMILTON	11	3	27.27	SEMINOLE	41	10	24.39
HARDEE	2	0	0.00	SUMTER	12	4	33.33
HENDRY	15	8	53.33	SUWANNEE	13	5	38.46
HERNANDO	23	8	34.78	TAYLOR	7	6	85.71
HIGHLANDS	23	11	47.83	UNION	1	0	0.00
HILLSBOROUGH	190	46	24.21	VOLUSIA	86	34	39.53
HOLMES	7	1	14.29	WAKULLA	8	4	50.00
INDIANRIVER	25	8	32.00	WALTON	21	9	42.86
JACKSON	14	6	42.86	WASHINGTON	5	3	60.00
JEFFERSON	1	0	0.00	UNKNOWN	5	1	20.00
LAFAYETTE	0	0	0.00	STATEWIDE	2,811	926	32.94
LAKE	37	18	48.65				
LEE	89	20	22.47				
LEON	30	9	30.00				

# Alcohol-Related Crashes by County

COUNTY	Total Crashes	Alcohol-Related Crashes	Alcohol-Related Crashes as Percent of Total	COUNTY	Total Crashes	Alcohol-Related Crashes	Alcohol-Related Crashes as Percent of Total
ALACHUA	4,074	406	9.97	LEVY	374	58	15.51
BAKER	242	36	14.88	LIBERTY	65	18	27.69
BAY	2,224	403	18.12	MADISON	232	23	9.91
BRADFORD	299	44	14.72	MANATEE	3,366	513	15.24
BREVARD	4,747	683	14.39	MARION	2,694	293	10.88
BROWARD	26,849	2,161	8.05	MARTIN	1,498	246	16.42
CALHOUN	123	31	25.20	MIAMI-DADE	47,794	2,429	5.08
CHARLOTTE	1,445	162	11.21	MONROE	1,250	233	18.64
CITRUS	1,014	167	16.47	NASSAU	452	68	15.04
CLAY	995	150	15.08	OKALOOSA	1,608	300	18.66
COLLIER	2,516	384	15.26	OKEECHOBEE	342	60	17.54
COLUMBIA	736	114	15.49	ORANGE	15,920	1,462	9.18
DE SOTO	301	56	18.60	OSCEOLA	2,116	250	11.81
DIXIE	161	28	17.39	PALM BEACH	13,921	1,365	9.81
DUVAL	13,273	1,208	9.10	PASCO	3,833	515	13.44
ESCAMBIA	4,330	606	14.00	PINELLAS	12,529	1,545	12.33
FLAGLER	382	53	13.87	POLK	7,394	824	11.14
FRANKLIN	117	30	25.64	PUTNAM	1,039	175	16.84
GADSDEN	706	108	15.30	ST. JOHNS	1,427	213	14.93
GILCHRIST	117	18	15.38	ST. LUCIE	2,091	245	11.72
GLADES	108	23	21.30	SANTA ROSA	1,148	165	14.37
GULF	182	33	18.13	SARASOTA	4,481	569	12.70
HAMILTON	202	28	13.86	SEMINOLE	3,458	402	11.63
HARDEE	218	24	11.01	SUMTER	461	67	14.53
HENDRY	346	59	17.05	SUWANNEE	465	47	10.11
HERNANDO	1,099	146	13.28	TAYLOR	277	45	16.25
HIGHLANDS	637	95	14.91	UNION	72	12	16.67
HILLSBOROUGH	21,335	2,071	9.71	VOLUSIA	6,403	788	12.31
HOLMES	123	25	20.33	WAKULLA	193	40	20.73
INDIAN RIVER	1,215	167	13.74	WALTON	526	148	28.14
JACKSON	458	66	14.41	WASHINGTON	201	34	16.92
JEFFERSON	154	17	11.04	UNKNOWN	454	47	10.35
LAFAYETTE	47	7	14.89	STATEWIDE	240,639	24,119	10.02
LAKE	1,835	221	12.04				
LEE	4,688	633	13.50				
LEON	5,257	457	8.69				

# ▶ Alcohol-Related Crashes by Locality

Florida Traffic 1 9 9 7  
Crash Facts

Locality	County	Total Crashes	Alcohol-Related Crashes	Alcohol-Related Crashes as % of Total	Locality	County	Total Crashes	Alcohol-Related Crashes	Alcohol-Related Crashes as % of Total
ALACHUA	ALACHUA	142	17	11.97	CLAIR-MEL	HILLSBOROUGH	14	3	21.43
ALFORD	JACKSON	3	0	0.00	CLEARWATER	PINELLAS	1,722	186	10.80
ALTAMONTE SPRINGS	SEMINOLE	418	61	14.59	CLERMONT	LAKE	144	7	4.86
ANNA MARIA	MANATEE	5	1	20.00	CLEWISTON	HENDRY	69	8	11.59
APALACHICOLA	FRANKLIN	19	4	21.05	COCOA	BREVARD	415	29	6.99
APOPKA	ORANGE	187	17	9.09	COCOA BEACH	BREVARD	226	41	18.14
ARCADIA	DE SOTO	75	6	8.00	COCOA WEST	BREVARD	3	0	0.00
ARCHER	ALACHUA	25	5	20.00	COCONUT CREEK	BROWARD	429	32	7.46
ATLANTIC BEACH	DUVAL	177	26	14.69	COLLIER MANR/CRESTHAVN	BROWARD	20	3	15.00
ATLANTIS	PALM BEACH	8	3	37.50	COMBEE SETTLEMENT	POLK	1	0	0.00
AUBURNDALE	POLK	260	30	11.54	CONWAY	ORANGE	12	1	8.33
AVON PARK	HIGHLANDS	103	7	6.80	COOPER CITY	BROWARD	220	24	10.91
AZALEA PARK	ORANGE	5	0	0.00	CORAL GABLES	MIAMI-DADE	903	43	4.76
BAL HARBOR	MIAMI-DADE	56	3	5.36	CORAL SPRINGS	BROWARD	986	77	7.81
BALDWIN	DUVAL	10	0	0.00	CORAL WAY VILLAGE	MIAMI-DADE	4	0	0.00
BARTOW	POLK	201	20	9.95	CORRY FIELD NAS	ESCAMBIA	1	0	0.00
BASCOM	JACKSON	2	0	0.00	COTTONDALE	JACKSON	3	1	33.33
BAY HARBOR ISLANDS	MIAMI-DADE	30	5	16.67	CRAWFORDVILLE	WAKULLA	3	0	0.00
BAY LAKE	ORANGE	1	0	0.00	CRESCENT CITY	PUTNAM	19	2	10.53
BAYSHORE GARDENS	MANATEE	1	0	0.00	CRESTVIEW	OKALOOSA	187	11	5.88
BELLE GLADE	PALM BEACH	275	22	8.00	CROSS CITY	DIXIE	18	2	11.11
BELLEAIR	PINELLAS	15	2	13.33	CRYSTAL RIVER	CITRUS	110	16	14.55
BELLEAIR BEACH	PINELLAS	15	5	33.33	CUTLER RIDGE	MIAMI-DADE	44	2	4.55
BELLEAIR BLUFFS	PINELLAS	45	4	8.89	DADE CITY	PASCO	119	5	4.20
BELLEVUE	MARION	56	2	3.57	DANIA	BROWARD	382	36	9.42
BELVEDERE HOMES	PALM BEACH	7	0	0.00	DAVENPORT	POLK	7	1	14.29
BISCAYNE GARDENS	MIAMI-DADE	20	0	0.00	DAVIE	BROWARD	1,430	143	10.00
BISCAYNE PARK	MIAMI-DADE	17	0	0.00	DAYTONA BEACH	VOLUSIA	2,491	250	10.04
BLOUNTSTOWN	CALHOUN	23	4	17.39	DAYTONA BEACH AIRPORT	VOLUSIA	1	0	0.00
BOCA CHICA NAS	MONROE	1	0	0.00	DAYTONA BEACH SHORES	VOLUSIA	42	8	19.05
BOCA RATON	PALM BEACH	1,546	104	6.73	DE BARY	VOLUSIA	56	6	10.71
BONITA SPRINGS	LEE	95	14	14.74	DE LAND	VOLUSIA	294	36	12.24
BOWLING GREEN	HARDEE	6	0	0.00	DE LEON SPRINGS	VOLUSIA	14	2	14.29
BOYNTON BEACH	PALM BEACH	764	93	12.17	DEERFIELD BEACH	BROWARD	975	89	9.13
BRADENTON	MANATEE	218	26	11.93	DEFUNIAK SPRINGS	WALTON	93	10	10.75
BRADENTON BEACH	MANATEE	7	0	0.00	DELRAY BEACH	PALM BEACH	765	80	10.46
BRANDON	HILLSBOROUGH	138	12	8.70	DELTONA	VOLUSIA	398	33	8.29
BRANFORD	SUWANNEE	1	0	0.00	DUNDEE	POLK	6	0	0.00
BRENT	ESCAMBIA	43	1	2.33	DUNEDIN	PINELLAS	470	45	9.57
BRINY BREEZES	PALM BEACH	4	1	25.00	DUNNELLON	MARION	10	0	0.00
BRISTOL	LIBERTY	1	0	0.00	EAGLE LAKE	POLK	19	0	0.00
BROADVIEW PARK	BROWARD	31	4	12.90	EAST NAPLES	COLLIER	431	66	15.31
BRONSON	LEVY	15	4	26.67	EATONVILLE	ORANGE	2	0	0.00
BROOKSVILLE	HERNANDO	96	9	9.38	EBRO	WASHINGTON	6	2	33.33
BROWARDALE	BROWARD	1	0	0.00	ECKERD COLLEGE	PINELLAS	1	1	100.00
BROWNS VILLAGE	MIAMI-DADE	1	0	0.00	EDGEWATER	VOLUSIA	170	30	17.65
BUNCHE PARK	MIAMI-DADE	2	1	50.00	EDGEWOOD	ORANGE	51	5	9.80
BUNNELL	FLAGLER	31	4	12.90	EGLIN AFB	OKALOOSA	2	0	0.00
BUSHNELL	SUMTER	15	0	0.00	EGYPT LAKE	HILLSBOROUGH	1	0	0.00
CALLAHAN	NASSAU	21	0	0.00	EL PORTAL	MIAMI-DADE	22	3	13.64
CALLOWAY	BAY	105	19	18.10	ENGLEWOOD	CHARLOTTE	88	8	9.09
CANOVA BEACH	BREVARD	3	0	0.00	ENGLEWOOD	SARASOTA	6	0	0.00
CANTONMENT	ESCAMBIA	12	3	25.00	EUSTIS	LAKE	183	19	10.38
CAPE CANAVERAL	BREVARD	89	21	23.60	EVERGLADES	COLLIER	6	0	0.00
CAPE CORAL	LEE	791	99	12.52	FAIRVIEW SHORES	ORANGE	1	1	100.00
CAROL CITY	MIAMI-DADE	231	10	4.33	FELLSMERE	INDIAN RIVER	5	1	20.00
CARRABELLE	FRANKLIN	3	1	33.33	FERNANDINA BEACH	NASSAU	86	9	10.47
CARVER RANCH ESTATES	BROWARD	7	0	0.00	FLA. MEMORIAL COLLEGE	ST. JOHNS	7	1	14.29
CASSELBERRY	SEMINOLE	504	50	9.92	FLAGLER BEACH	FLAGLER	35	5	14.29
CECIL FIELD NAS	DUVAL	5	0	0.00	FLORIDA A&M UNIVERSITY	LEON	49	1	2.04
CEDAR GROVE	BAY	13	4	30.77	FLORIDA ATLANTIC UNIV.	PALM BEACH	12	1	8.33
CEDAR HMMCK/BRAD S	MANATEE	2	0	0.00	FLORIDA CITY	MIAMI-DADE	12	2	16.67
CEDAR KEY	LEVY	2	1	50.00	FLORIDA SOUTHERN COLL.	POLK	1	1	100.00
CENTURY	ESCAMBIA	14	1	7.14	FLORIDA STATE UNIV.	LEON	23	1	4.35
CHATTAHOOCHEE	GADSDEN	13	1	7.69	FORT MEADE	POLK	41	6	14.63
CHIEFLAND	LEVY	47	7	14.89	FORT MYERS	LEE	1,292	130	10.06
CHIPLEY	WASHINGTON	15	0	0.00	FORT MYERS BEACH	LEE	26	3	11.54

# ► Alcohol-Related Crashes by Locality

Florida Traffic 1 9 9 7  
Crash Facts

Locality	County	Total Crashes	Alcohol-Related Crashes	Alcohol-Related Crashes as % of Total
FORT MYERS SE	LEE	5	0	0.00
FORT MYERS SW	LEE	9	0	0.00
FORT PIERCE	ST. LUCIE	705	87	12.34
FORT PIERCE NW	ST. LUCIE	32	3	9.38
FORT WHITE	COLUMBIA	5	1	20.00
FREESPORT	WALTON	5	0	0.00
FROSTPROOF	POLK	30	1	3.33
FRUITLAND PARK	LAKE	60	13	21.67
FT. LAUDERDALE	BROWARD	4,352	455	10.45
FT. MYERS VIL/PIN MN	LEE	3	0	0.00
FT. WALTON BEACH	OKALOOSA	227	37	16.30
GAINESVILLE	ALACHUA	2,014	175	8.69
GIFFORD	INDIAN RIVER	2	0	0.00
GOLDEN BEACH	MIAMI-DADE	10	0	0.00
GOLDEN GLADES	MIAMI-DADE	44	1	2.27
GOULDS	MIAMI-DADE	43	7	16.28
GRACEVILLE	JACKSON	19	3	15.79
GRAND RIDGE	JACKSON	2	0	0.00
GREEN COVE SPRINGS	CLAY	48	8	16.67
GREENACRES CITY	PALM BEACH	246	24	9.76
GRETNA	GADSDEN	4	0	0.00
GROVELAND	LAKE	31	3	9.68
GULF BREEZE	SANTA ROSA	89	11	12.36
GULF GATE ESTATES	SARASOTA	1	0	0.00
GULF STREAM	PALM BEACH	20	1	5.00
GULFPORT	PINELLAS	96	15	15.63
HACIENDA	BROWARD	7	0	0.00
HAINES CITY	POLK	237	24	10.13
HALLANDALE	BROWARD	702	55	7.83
HASTINGS	ST. JOHNS	19	4	21.05
HAVANA	GADSDEN	7	1	14.29
HAVERTHILL	PALM BEACH	8	0	0.00
HAWTHORNE	ALACHUA	31	3	9.68
HIALEAH	MIAMI-DADE	3,838	273	7.11
HIALEAH GARDENS	MIAMI-DADE	195	13	6.67
HIGH SPRINGS	ALACHUA	55	5	9.09
HIGHLAND BEACH	PALM BEACH	15	0	0.00
HILLIARD	NASSAU	6	3	50.00
HILLSBORO BEACH	BROWARD	17	2	11.76
HOBE SOUND	MARTIN	41	9	21.95
HOLDEN HILLS	ORANGE	13	0	0.00
HOLLY HILL	VOLUSIA	186	32	17.20
HOLLYWOOD	BROWARD	2,723	168	6.17
HOLLYWOOD RIDGE FARM	BROWARD	4	2	50.00
HOLMES BEACH	MANATEE	49	11	22.45
HOMESTEAD	MIAMI-DADE	299	54	18.06
HOMOSASSA SPRINGS	CITRUS	4	1	25.00
HOWEY-IN-THE-HILLS	LAKE	11	3	27.27
HYPOLUXO	PALM BEACH	13	1	7.69
IMMOKALEE	COLLIER	272	53	19.49
INDIALANTIC	BREVARD	53	10	18.87
INDIAN CREEK VILLAGE	MIAMI-DADE	27	0	0.00
INDIAN HARBOUR BEACH	BREVARD	42	3	7.14
INDIAN RIVER SHORES	INDIAN RIVER	2	0	0.00
INDIAN ROCKS BEACH	PINELLAS	51	10	19.61
INDIAN SHORES	PINELLAS	23	9	39.13
INDIANTOWN	MARTIN	43	17	39.53
INGLIS	LEVY	7	2	28.57
INTERLACHEN	PUTNAM	42	7	16.67
INVERNESS	CITRUS	41	7	17.07
ISLAMORADA	MONROE	52	15	28.85
JACKSONVILLE	DUVAL	12,408	1,059	8.53
JACKSONVILLE BEACH	DUVAL	474	94	19.83
JACKSONVILLE NAS	DUVAL	3	1	33.33
JACKSONVILLE UNIV.	DUVAL	6	0	0.00
JASPER	HAMILTON	12	0	0.00
JAY	SANTA ROSA	2	0	0.00

Locality	County	Total Crashes	Alcohol-Related Crashes	Alcohol-Related Crashes as % of Total
JENSEN BEACH	MARTIN	116	27	23.28
JUNE PARK	BREVARD	3	0	0.00
JUNO BEACH	PALM BEACH	33	5	15.15
JUPITER	PALM BEACH	423	57	13.48
JUPITER INLET CLNY	PALM BEACH	1	0	0.00
JUPITER ISLAND	MARTIN	5	0	0.00
KENDALL	MIAMI-DADE	362	28	7.73
KENNEDY SPACE CENTER	BREVARD	38	4	10.53
KENNETH CITY	PINELLAS	82	8	9.76
KEY BISCAYNE	MIAMI-DADE	83	6	7.23
KEY COLONY BEACH	MONROE	7	0	0.00
KEY LARGO	MONROE	180	34	18.89
KEY WEST	MONROE	477	65	13.63
KEYSTONE HEIGHTS	CLAY	5	1	20.00
KISSIMMEE	OSCEOLA	499	77	15.43
LA BELLE	HENDRY	47	8	17.02
LA CROSSE	ALACHUA	1	0	0.00
LADY LAKE	LAKE	76	6	7.89
LAKE ALFRED	POLK	47	8	17.02
LAKE BUENA VISTA	ORANGE	66	2	3.03
LAKE BUTLER	UNION	8	2	25.00
LAKE CARROLL	HILLSBOROUGH	1	0	0.00
LAKE CITY	COLUMBIA	170	22	12.94
LAKE CLARKE SHORES	PALM BEACH	23	2	8.70
LAKE FOREST	BROWARD	5	0	0.00
LAKE HAMILTON	POLK	40	8	20.00
LAKE HELEN	VOLUSIA	10	5	50.00
LAKE HOLLOWAY	POLK	7	1	14.29
LAKE MAGDALENE	HILLSBOROUGH	5	0	0.00
LAKE MARY	SEMINOLE	293	15	5.12
LAKE PARK	PALM BEACH	103	10	9.71
LAKE PLACID	HIGHLANDS	16	2	12.50
LAKE WALES	POLK	189	25	13.23
LAKE WORTH	PALM BEACH	755	81	10.73
LAKELAND	POLK	1,513	175	11.57
LAND O'LAKES	PASCO	19	2	10.53
LANTANA	PALM BEACH	171	25	14.62
LARGO	PINELLAS	718	129	17.97
LAUDERDALE LAKES	BROWARD	503	42	8.35
LAUDERDALE-BY-THE-SEA	BROWARD	51	7	13.73
LAUDERHILL	BROWARD	538	27	5.02
LAUREL HILL	OKALOOSA	1	0	0.00
LAWTEY	BRADFORD	8	0	0.00
LAYTON	MONROE	1	1	100.00
LAZY LAKE VILLAGE	BROWARD	7	0	0.00
LEALMAN	PINELLAS	8	0	0.00
LEE CO. AIRPORT POLICE	LEE	30	3	10.00
LEESBURG	LAKE	293	30	10.24
LEHIGH ACRES	LEE	67	7	10.45
LEISURE CITY	MIAMI-DADE	9	0	0.00
LIGHTHOUSE POINT	BROWARD	184	27	14.67
LIVE OAK	SUWANNEE	190	11	5.79
LONGBOAT KEY	MANATEE	9	0	0.00
LONGBOAT KEY	SARASOTA	27	2	7.41
LONGWOOD	SEMINOLE	185	22	11.89
LYNN HAVEN	BAY	123	15	12.20
MACCLENNY	BAKER	41	4	9.76
MACDILL AFB	HILLSBOROUGH	7	2	28.57
MADEIRA BEACH	PINELLAS	89	21	23.60
MADISON	MADISON	32	1	3.13
MAITLAND	ORANGE	187	20	10.70
MALABAR	BREVARD	14	3	21.43
MALONE	JACKSON	3	0	0.00
MANALAPAN	PALM BEACH	7	3	42.86
MANGONIA PARK	PALM BEACH	119	5	4.20
MARATHON	MONROE	113	19	16.81
MARGATE	BROWARD	505	53	10.50

# ► Alcohol-Related Crashes by Locality

Florida Traffic 1 9 9 7  
Crash Facts

Locality	County	Total Crashes	Alcohol-Related Crashes	Alcohol-Related Crashes as % of Total
MARIANNA	JACKSON	57	9	15.79
MARY ESTHER	OKALOOSA	41	4	9.76
MASCOTTE	LAKE	31	4	12.90
MAYO	LAFAYETTE	3	0	0.00
MAYPORT NAS	DUVAL	1	0	0.00
MCCOY AFB	ORANGE	2	0	0.00
MEDLEY	MIAMI-DADE	147	6	4.08
MELBOURNE	BREVARD	663	110	16.59
MELBOURNE BEACH	BREVARD	15	0	0.00
MELROSE PARK	BROWARD	1	0	0.00
MEMPHIS	MANATEE	9	0	0.00
MERRITT ISLAND	BREVARD	437	54	12.36
MEXICO BEACH	BAY	12	2	16.67
MIAMI	MIAMI-DADE	8,658	442	5.11
MIAMI BEACH	MIAMI-DADE	2,733	226	8.27
MIAMI LAKES	MIAMI-DADE	67	5	7.46
MIAMI SHORES	MIAMI-DADE	141	5	3.55
MIAMI SPRINGS	MIAMI-DADE	95	4	4.21
MICANOPY	ALACHUA	7	1	14.29
MICC. INDIAN RES.	MIAMI-DADE	7	2	28.57
MIDDLEBURG	CLAY	19	2	10.53
MILTON	SANTA ROSA	75	4	5.33
MIMS	BREVARD	43	12	27.91
MINNEOLA	LAKE	12	2	16.67
MIRAMAR	BROWARD	604	57	9.44
MONTICELLO	JEFFERSON	6	0	0.00
MOORE HAVEN	GLADES	7	2	28.57
MOUNT DORA	LAKE	182	23	12.64
MULBERRY	POLK	46	1	2.17
MYRTLE GROVE	ESCAMBIA	91	3	3.30
NAPLES	COLLIER	287	38	13.24
NARANJA	MIAMI-DADE	23	1	4.35
NEPTUNE BEACH	DUVAL	102	19	18.63
NEW PORT RICHEY	PASCO	282	42	14.89
NEW SMYRNA BEACH	VOLUSIA	267	34	12.73
NEWBERRY	ALACHUA	48	5	10.42
NICEVILLE	OKALOOSA	96	12	12.50
NOKOMIS/LAUREL	SARASOTA	1	0	0.00
NORTH ANDREWS GARDENS	BROWARD	19	2	10.53
NORTH BAY VILLAGE	MIAMI-DADE	61	5	8.20
NORTH FORT MYERS	LEE	193	35	18.13
NORTH LAUDERDALE	BROWARD	231	19	8.23
NORTH MIAMI	MIAMI-DADE	1,558	53	3.40
NORTH MIAMI BEACH	MIAMI-DADE	911	45	4.94
NORTH NAPLES	COLLIER	124	14	11.29
NORTH PALM BEACH	PALM BEACH	125	14	11.20
NORTH PORT	SARASOTA	64	13	20.31
NORTH REDINGTON BEACH	PINELLAS	12	0	0.00
OAK HILL	VOLUSIA	11	0	0.00
OAKLAND	ORANGE	28	3	10.71
OAKLAND PARK	BROWARD	1,305	116	8.89
OCALA	MARION	1,014	75	7.40
OCEAN BREEZE PARK	MARTIN	2	0	0.00
OCEAN CITY	OKALOOSA	19	5	26.32
OCEAN RIDGE	PALM BEACH	19	0	0.00
OCOEE	ORANGE	328	29	8.84
OJUS	MIAMI-DADE	4	0	0.00
OKEECHOBEE	OKEECHOBEE	127	15	11.81
OLDSMAR	PINELLAS	212	30	14.15
OLYMPIA HEIGHTS	MIAMI-DADE	3	1	33.33
ONECO	MANATEE	7	1	14.29
OPA LOCKA	MIAMI-DADE	330	6	1.82
ORANGE CITY	VOLUSIA	151	13	8.61
ORANGE PARK	CLAY	98	5	5.10
ORLANDO	ORANGE	5,234	345	6.59
ORLOVISTA	ORANGE	8	0	0.00
ORMOND BEACH	VOLUSIA	344	39	11.34
ORMOND BY THE SEA	VOLUSIA	10	1	10.00

Locality	County	Total Crashes	Alcohol-Related Crashes	Alcohol-Related Crashes as % of Total
OTTER CREEK	LEVY	1	0	0.00
OVIEDO	SEMINOLE	190	12	6.32
PAHOKEE	PALM BEACH	43	10	23.26
PALATKA	PUTNAM	335	32	9.55
PALMBAY	BREVARD	384	68	17.71
PALM BEACH	PALM BEACH	126	13	10.32
PALM BEACH GARDENS	PALM BEACH	430	45	10.47
PALM BEACH SHORES	PALM BEACH	7	2	28.57
PALM CITY	MARTIN	57	13	22.81
PALM RIVER/CLAIR MEL	HILLSBOROUGH	4	0	0.00
PALM SHORES	BREVARD	8	5	62.50
PALM SPRINGS	PALM BEACH	71	11	15.49
PALMETTO	MANATEE	129	20	15.50
PALMETTO ESTATES	MIAMI-DADE	1	0	0.00
PANAMACITY	BAY	927	123	13.27
PANAMA CITY BEACH	BAY	180	42	23.33
PARKER	BAY	78	13	16.67
PARKLAND	BROWARD	43	3	6.98
PARRISH	MANATEE	2	0	0.00
PATRICK AFB	BREVARD	5	1	20.00
PAXTON	WALTON	3	1	33.33
PEMBROKE PARK	BROWARD	174	15	8.62
PEMBROKE PINES	BROWARD	1,480	68	4.59
PENSACOLA	ESCAMBIA	767	97	12.65
PERRINE	MIAMI-DADE	44	6	13.64
PERRY	TAYLOR	156	16	10.26
PIERSON	VOLUSIA	14	2	14.29
PINE HILLS	ORANGE	174	12	6.90
PINELLAS PARK	PINELLAS	817	106	12.97
PINEWOOD	MIAMI-DADE	4	1	25.00
PINL CO CAMPUS P.D.	PINELLAS	3	0	0.00
PLANT CITY	HILLSBOROUGH	592	42	7.09
PLANTATION	BROWARD	1,370	74	5.40
POLK CITY	POLK	18	3	16.67
POMPANO BEACH	BROWARD	2,179	166	7.62
POMPANO BEACH HLNDS	BROWARD	7	0	0.00
PONCE INLET	VOLUSIA	6	1	16.67
PORT CHARLOTTE	CHARLOTTE	270	28	10.37
PORT ORANGE	VOLUSIA	463	59	12.74
PORT RICHEY	PASCO	140	24	17.14
PORT SALERNO	MARTIN	51	19	37.25
PORT ST. JOE	GULF	25	3	12.00
PORT ST. LUCIE	ST. LUCIE	624	75	12.02
PROGRESS VILLAGE	HILLSBOROUGH	2	0	0.00
PUNTA GORDA	CHARLOTTE	168	16	9.52
QUINCY	GADSDEN	184	15	8.15
REDINGTON BEACH	PINELLAS	7	2	28.57
REDINGTON SHORES	PINELLAS	19	6	31.58
RICHMOND HEIGHTS	MIAMI-DADE	102	6	5.88
RIDGEWOOD HEIGHTS	SARASOTA	2	0	0.00
RIVERLAND	BROWARD	4	0	0.00
RIVIERA BEACH	PALM BEACH	456	51	11.18
ROCKLEDGE	BREVARD	130	9	6.92
ROCKY CREEK	HILLSBOROUGH	1	1	100.00
ROYAL PALM BEACH	PALM BEACH	201	17	8.46
RUSKIN	HILLSBOROUGH	16	1	6.25
SAFETY HARBOR	PINELLAS	138	23	16.67
SAMOSET	MANATEE	4	0	0.00
SANFORD	SEMINOLE	517	61	11.80
SANIBEL	LEE	59	8	13.56
SARASOTA	SARASOTA	1,605	169	10.53
SARASOTA S	SARASOTA	9	2	22.22
SATELLITE BEACH	BREVARD	56	11	19.64
SEA RANCH LAKES	BROWARD	7	0	0.00
SEBASTIAN	INDIAN RIVER	78	14	17.95
SEBRING	HIGHLANDS	113	6	5.31
SEMINOLE	PINELLAS	231	19	8.23
SEMINOLE PARK	PINELLAS	2	0	0.00

# ▶ Alcohol-Related Crashes by Locality

Florida Traffic  
Crash Facts 1 9 9 7

Locality	County	Total Crashes	Alcohol-Related Crashes	Alcohol-Related Crashes as % of Total
SEVILLE	VOLUSIA	9	2	22.22
SEWALLS POINT	MARTIN	18	2	11.11
SIESTA KEY	SARASOTA	2	1	50.00
SILVER SPRINGS SHORES	MARION	2	0	0.00
SKY LAKE	ORANGE	9	2	22.22
SNEADS	JACKSON	12	1	8.33
SOUTH BAY	PALM BEACH	33	1	3.03
SOUTH DAYTONA	VOLUSIA	115	21	18.26
SOUTH MIAMI	MIAMI-DADE	204	5	2.45
SOUTH PALM BEACH	PALM BEACH	11	2	18.18
SOUTH PASADENA	PINELLAS	63	5	7.94
SOUTH PATRICK SHORES	BREVARD	8	2	25.00
SOUTH PENINSULA	VOLUSIA	1	1	100.00
SPRINGFIELD	BAY	85	14	16.47
ST. AUGUSTINE	ST. JOHNS	156	17	10.90
ST. AUGUSTINE BEACH	ST. JOHNS	51	22	43.14
ST. CLOUD	OSCEOLA	237	19	8.02
ST. LEO	PASCO	3	0	0.00
ST. MARKS	WAKULLA	1	0	0.00
ST. PETERSBURG	PINELLAS	3,356	428	12.75
ST. PETERSBURG BEACH	PINELLAS	176	26	14.77
STARKE	BRADFORD	120	10	8.33
STEINHATCHEE	TAYLOR	4	0	0.00
STETSON UNIVERSITY	VOLUSIA	9	0	0.00
STUART	MARTIN	567	76	13.40
SUNNY ISLES	MIAMI-DADE	3	0	0.00
SUNRISE	BROWARD	587	37	6.30
SURFSIDE	MIAMI-DADE	81	10	12.35
SWEETWATER	MIAMI-DADE	35	1	2.86
TALLAHASSEE	LEON	4,145	311	7.50
TAMARAC	BROWARD	960	47	4.90
TAMPA	HILLSBOROUGH	10,358	881	8.51
TARPON SPRINGS	PINELLAS	372	37	9.95
TAVARES	LAKE	74	4	5.41
TAVERNIER	MONROE	48	7	14.58
TEMPLE TERRACE	HILLSBOROUGH	179	23	12.85
TEQUESTA VILLAGE	PALM BEACH	42	5	11.90
TICE	LEE	19	3	15.79
TITUSVILLE	BREVARD	563	66	11.72
TREASURE ISLAND	PINELLAS	111	30	27.03
TRENTON	GILCHRIST	3	0	0.00
TYNDALL AFB	BAY	3	0	0.00
ULETA	MIAMI-DADE	4	0	0.00
UMATILLA	LAKE	21	2	9.52
UNIV. OF CENTRAL FLA.	ORANGE	15	3	20.00
UNIV. OF NORTH FLORIDA	DUVAL	21	0	0.00
UNIV. OF S. FLORIDA	HILLSBOROUGH	58	2	3.45
UNIV. OF WEST FLORIDA	ESCAMBIA	6	0	0.00
UNIVERSITY OF FLORIDA	ALACHUA	71	3	4.23
UNIVERSITY OF MIAMI	MIAMI-DADE	17	0	0.00
UNIVERSITY OF TAMPA	HILLSBOROUGH	7	1	14.29
VALPARAISO	OKALOOSA	16	3	18.75
VENICE	SARASOTA	165	16	9.70
VERNON	WASHINGTON	5	0	0.00
VERO BEACH	INDIAN RIVER	298	35	11.74
VERO BEACH SOUTH	INDIAN RIVER	5	3	60.00
VIRGINIA GARDENS	MIAMI-DADE	10	0	0.00
WABASSO	INDIAN RIVER	5	0	0.00
WAHNETA	POLK	2	0	0.00
WALDO	ALACHUA	21	3	14.29
WARD RIDGE	GULF	1	0	0.00
WARRINGTON	ESCAMBIA	104	11	10.58
WAUCHULA	HARDEE	46	2	4.35
WEBSTER	SUMTER	1	0	0.00
WELAKA	PUTNAM	3	2	66.67
WEST BRADENTON	MANATEE	783	74	9.45
WEST GATE	PALM BEACH	4	0	0.00
WEST HOLLYWOOD	BROWARD	11	0	0.00

Locality	County	Total Crashes	Alcohol-Related Crashes	Alcohol-Related Crashes as % of Total
WEST MELBOURNE	BREVARD	98	11	11.22
WEST MIAMI	MIAMI-DADE	70	5	7.14
WEST PALM BEACH	PALM BEACH	1,751	143	8.17
WEST PENSACOLA	ESCAMBIA	36	5	13.89
WEST WINTER HAVEN	POLK	3	0	0.00
WESTON	BROWARD	131	5	3.82
WEWAHITCHKA	GULF	4	1	25.00
WHITE SPRINGS	HAMILTON	6	0	0.00
WILDWOOD	SUMTER	37	6	16.22
WILLISTON	LEVY	41	4	9.76
WILTON MANORS	BROWARD	176	23	13.07
WINDERMERE	ORANGE	6	1	16.67
WINSTON	POLK	1	0	0.00
WINTER GARDEN	ORANGE	178	18	10.11
WINTER HAVEN	POLK	658	41	6.23
WINTER PARK	ORANGE	341	47	13.78
WINTER SPRINGS	SEMINOLE	62	4	6.45
YULEE	NASSAU	13	2	15.38
ZEPHYRHILLS	PASCO	170	12	7.06