

# ▶ Table of Contents

Florida Traffic  
Crash Facts 1 9 9 6

Source of Data .....	2
Definition of Terms .....	3
State of Florida Summary .....	4
Florida Traffic Trends .....	6
<b>When Crashes Occur .....</b>	<b>7 - 10</b>
Traffic Crashes by Month .....	7
Crashes by Day of Week .....	8
Crashes by Time of Day .....	9
Holiday Traffic Fatalities .....	10
<b>Persons Involved in Crashes .....</b>	<b>11 - 20</b>
Sex of Drivers in Crashes .....	11
Age of Drivers in Crashes .....	12
Selected Age Groups .....	13
Safety Equipment Use .....	14
Child Safety Restraint Use .....	15
Motorcyclist Fatality Trends .....	16
Bicyclist Crash Trends .....	17
Pedestrian Fatality Trends .....	18
Pedestrian Crash Rates by Sex and Age .....	19
Pedestrian Behavior in Crashes .....	20
Passengers Riding in the Body of Light (Pickup) Trucks .....	20
<b>Causal Factors in Crashes .....</b>	<b>21 - 23</b>
Contributing Causes .....	21
Alcohol-Related Crash Trends .....	22
Alcohol and Drug Use .....	23
<b>County/City Data .....</b>	<b>25 - 33</b>
Fatality Trend by County .....	26
Crash Trend by County .....	27
Alcohol-Related Fatalities by County .....	28
Alcohol-Related Crashes by County .....	29
Alcohol-Related Crashes by City .....	30
<b>Annual Standard Summary .....</b>	<b>35 - 45</b>

APPENDIX: Florida Traffic Crash Report Form

## ► Source of Data

Florida Traffic  
Crash Facts 1996

The information contained in this Traffic Crash Facts booklet is extracted from law enforcement agency long-form reports of traffic crashes. A law enforcement officer must submit a long-form crash report when investigating:

Motor vehicle crashes resulting in death or personal injury, or

Motor vehicle crashes in which one or more of the following conditions occur:

Leaving the scene involving damage to an attended vehicle or property (Section 316.061 (1), F.S.);

Driving while under the influence of alcoholic beverages, chemical substances, or controlled substances or with an unlawful blood alcohol level (Section 316.193, F.S.).

An investigating officer *may* report other traffic crashes on the long-form. In particular, applicable statutes specify an officer's discretion to submit a long-form report in crashes where a vehicle is rendered inoperable to the degree that a wrecker is required to remove it from traffic.

Statutory revisions in 1983 and 1989 had the effect of reducing the number of non-injury crashes required to be reported to the Department. Any presentation of historical data that includes such crashes, such as total traffic crash counts, will reflect these changes. Data on traffic crashes involving death, injury, or other criteria for law enforcement long-form reports as outlined above are not affected.

Please note:

All 1992 data in this publication have been updated from preliminary figures published in the Department of Highway Safety and Motor Vehicles *Traffic Crash Data, 1992*. Figures from the 1992 publication should not be used for year-to-year comparisons.

# ► Definition of Terms

The following terms are defined as they apply to the crash data presented in this publication. These definitions may differ from legal or other uses of the same terms.

- Alcohol-related traffic crash-** A crash involving a driver and/or pedestrian for whom alcohol use was reported (does not presume intoxication).
- Bicycle-** A vehicle propelled solely by human power or a motorized bicycle propelled by a combination of human power and an electric helper motor rated at not more than 200 watts (this term does not include a vehicle with a seat height of no more than 25 inches from the ground when the seat is adjusted to its highest position, or a scooter or similar device).
- Bicyclist-** The driver of a bicycle. A passenger on a bicycle is considered a vehicle passenger.
- Driver-** Unless otherwise indicated, the operator of a motor vehicle or bicycle. Driver data typically exclude uninjured persons presumed to have been operating hit-and-run, phantom, or properly parked vehicles.
- Fatal traffic crash-** A traffic crash that results in one or more fatalities within ninety days of occurrence.
- Moped-** A motor-powered cycle with a pedal-activated motor and 2 brake horse-power maximum.
- Motor vehicle-** Any motorized vehicle not operating on rails.
- Motorcycle-** A motor vehicle, with a seat or saddle for the driver's use, traveling with no more than three wheels in contact with the ground, excluding a tractor or a moped.
- Motorcyclist-** The driver of a motorcycle. A passenger on a motorcycle is considered a vehicle passenger.
- Traffic crash-** A crash involving at least one motor vehicle on a trafficway that is open to the public. The term "crash" in this publication is equivalent to the term "accident" as used in previous editions and standard summary tables.
- Traffic fatality-** The death of a person as a direct result of a traffic crash within ninety days of the crash occurrence.
- Vehicle occupants-** Drivers and passengers of automobiles, vans, trucks, buses, and motor homes.

# ► State of Florida Summary

Florida Traffic  
Crash Facts 1996

## ALL CRASHES

Compared to 1995, there was a 5.6% increase in traffic crashes investigated and reported.

Traffic crashes .....	241,377
Drivers involved .....	384,652
Average crashes per day .....	660

## FATAL CRASHES AND FATALITIES

Compared to 1995, there was a 1.4% decrease in traffic fatalities.

Fatalities .....	2,806
Fatal crashes .....	2,550

## INJURY CRASHES

Compared to 1995, there was a 4.0% increase in traffic injuries.

Injuries .....	243,320
Injury crashes .....	149,565

## ALCOHOL-RELATED CRASHES AND FATALITIES

33.6% of traffic fatalities and 10.3% of traffic crashes were alcohol-related.

Alcohol-related fatalities .....	944
Alcohol-related injuries .....	22,744
Alcohol-related crashes .....	24,875
Alcohol-related fatal crashes .....	853
Alcohol-related injury crashes .....	13,827

## CRASH ENVIRONMENTS

59.6% of all crashes occurred in primarily business areas, while 57.8% of fatal crashes were in open country or residential areas.

Crashes in Business Areas .....	143,852
Crashes in Residential Areas .....	71,265
Crashes in Open Country .....	26,260
Fatal Crashes in Business Areas .....	1,075
Fatal Crashes in Residential Areas .....	668
Fatal Crashes in Open Country .....	807

# ► State of Florida Summary

Florida Traffic  
Crash Facts 1 9 9 6

## SAFETY EQUIPMENT

82.9% of motor vehicle occupants, bicyclists, and motorcyclists involved in crashes were reported using safety equipment, while 17.0% were reported not using safety equipment. Safety equipment use was not reported for 0.2%.

Vehicle Occupants Using Safety Belts .....	458,725
Vehicle Occupants Using Child Safety Seats .....	11,119
Vehicle Occupants Using Air Bags (Only) .....	1,771
Vehicle Occupants Not Using Safety Equipment .....	89,601
Bicyclists with Safety Helmet .....	407
Bicyclists without Safety Helmet .....	6,618
Motorcyclists with Safety Helmet .....	3,556
Motorcyclists without Safety Helmet .....	1,194
Safety Equipment Use Not Stated .....	973

## PEDESTRIAN CRASHES

19.9% of all traffic fatalities were pedestrians.

Pedestrians killed .....	559
Pedestrians injured .....	8,054
Pedestrian crashes (by First Harmful Event) .....	7,508

## BICYCLE CRASHES

3.7% of all traffic fatalities were bicycle drivers.

Bicycle drivers killed .....	105
Bicycle drivers injured .....	6,412
Bicycle crashes (by First Harmful Event) .....	5,304

## MOTORCYCLE CRASHES

4.9% of all traffic fatalities were motorcycle drivers.

Motorcyclists killed .....	138
Motorcyclists injured .....	4,158

# ▶ Florida Traffic Trends

Florida Traffic  
Crash Facts 1996

YEAR	LICENSED DRIVERS	REGISTERED VEHICLES	VEHICLE MILES*	CRASHES	NON-FATAL INJURIES	DEATHS	MILEAGE DEATH RATE**
1977	6,607,213	7,845,529	67,007	284,965	160,096	2,066	3.1
1978	6,915,219	8,079,308	71,437	326,119	181,019	2,305	3.2
1979	7,341,081	7,724,148	74,651	343,542	190,697	2,635	3.5
1980	7,809,423	7,797,375	75,281	357,720	201,385	2,879	3.8
1981	8,222,403	7,887,881	76,146	368,766	205,437	3,119	4.1
1982	8,598,019	8,622,549	79,497	361,312	195,834	2,710	3.4
1983	8,987,493	9,064,490	81,775	384,614	194,791	2,729	3.3
1984	9,442,763	9,444,964	85,241	237,511	202,889	2,856	3.4
1985	9,630,975	10,827,693	88,057	250,412	216,596	2,870	3.3
1986	9,924,110	11,651,253	87,325	242,381	219,352	2,874	3.3
1987	10,241,063	11,738,273	92,865	240,429	215,886	2,891	3.1
1988	10,648,019	11,997,948	105,030	256,543	230,738	3,152	3.0
1989	11,109,288	12,276,272	108,876	252,439	230,060	3,033	2.8
1990	11,612,402	12,465,790	109,997	216,245	214,208	2,951	2.7
1991	12,170,821	11,184,146 <sup>†</sup>	113,484	195,312	195,122	2,523	2.2
1992	11,550,126 <sup>†</sup>	11,205,298	114,000	196,176	205,432	2,480	2.2
1993	11,767,409	11,159,938	119,768	199,039	212,454	2,719	2.3
1994	11,992,578	11,393,982	120,929	206,183	223,458	2,722	2.3
1995	12,019,156	11,557,811 <sup>††</sup>	127,800	228,589	233,900	2,847	2.2
1996	12,343,598	12,003,930	129,637	241,377	243,320	2,806	2.2

\*IN MILLIONS

\*\*PER 100 MILLION VEHICLE MILES OF TRAVEL

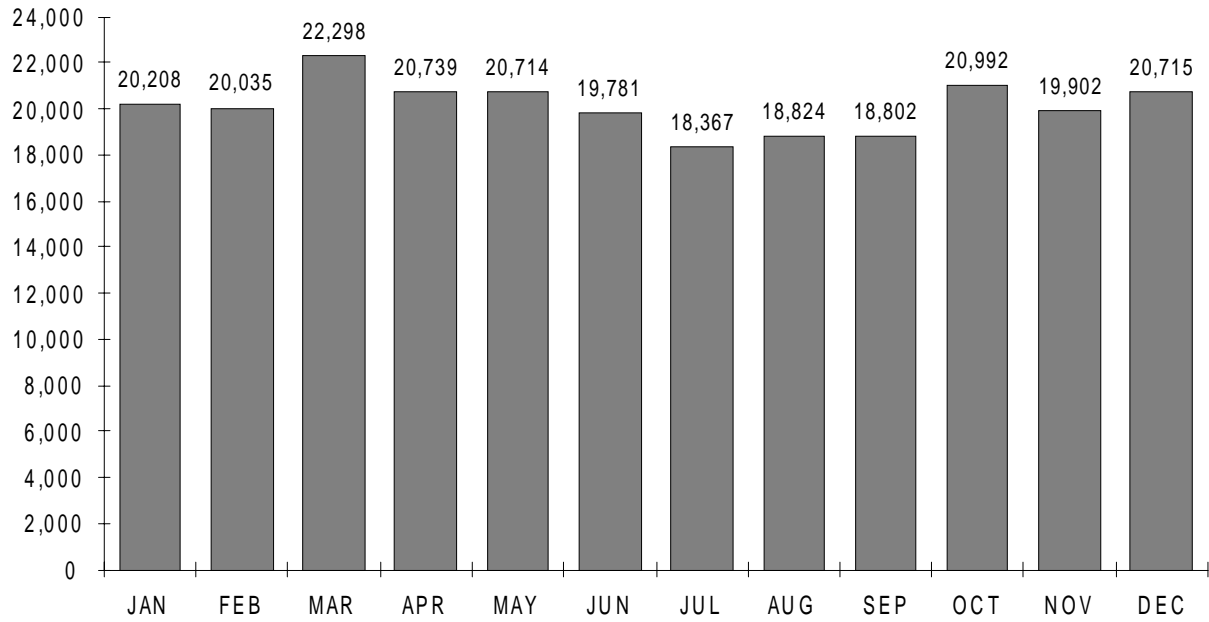
†DECREASE REFLECTS CHANGE IN ACCOUNTING METHOD

††REVISED

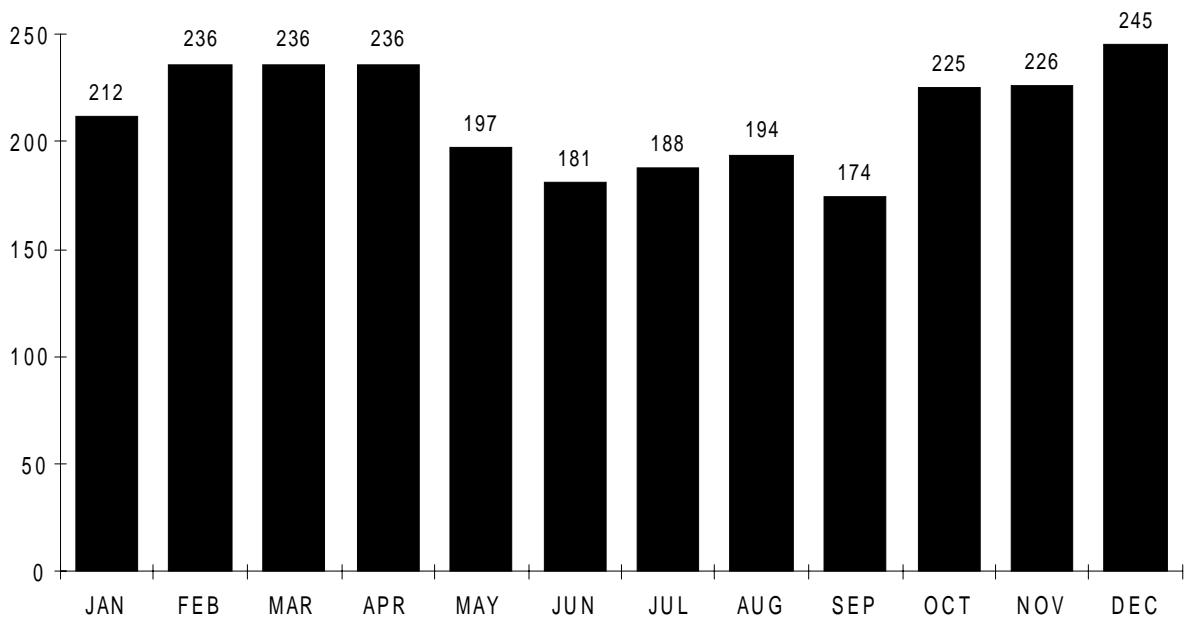
# ► Traffic Crashes by Month

Florida Traffic  
Crash Facts 1996

## ALL CRASHES



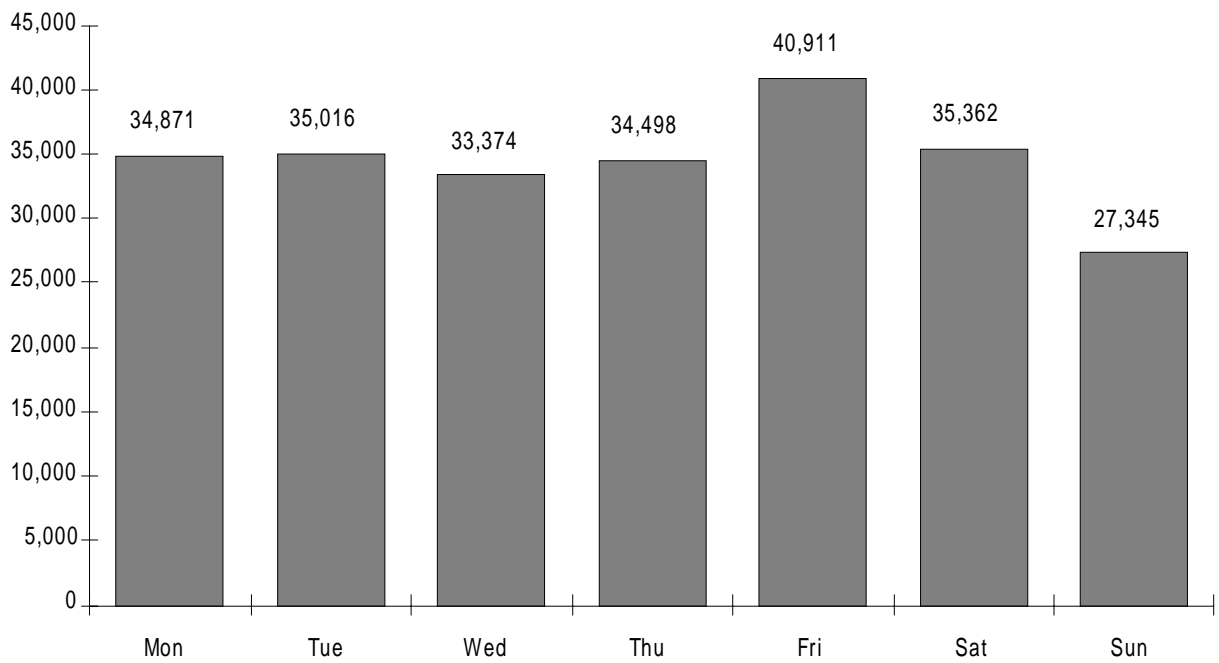
## FATAL CRASHES



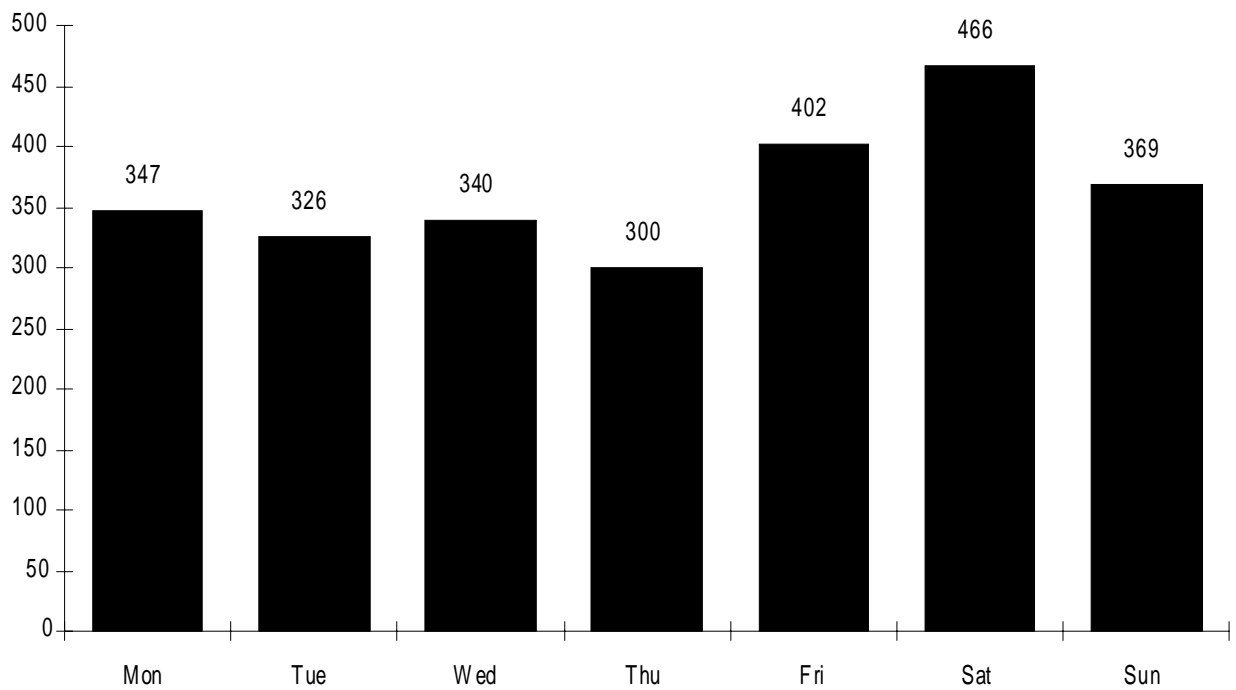
# ▶ Crashes by Day of Week

Florida Traffic  
Crash Facts 1996

## ALL CRASHES



## FATAL CRASHES

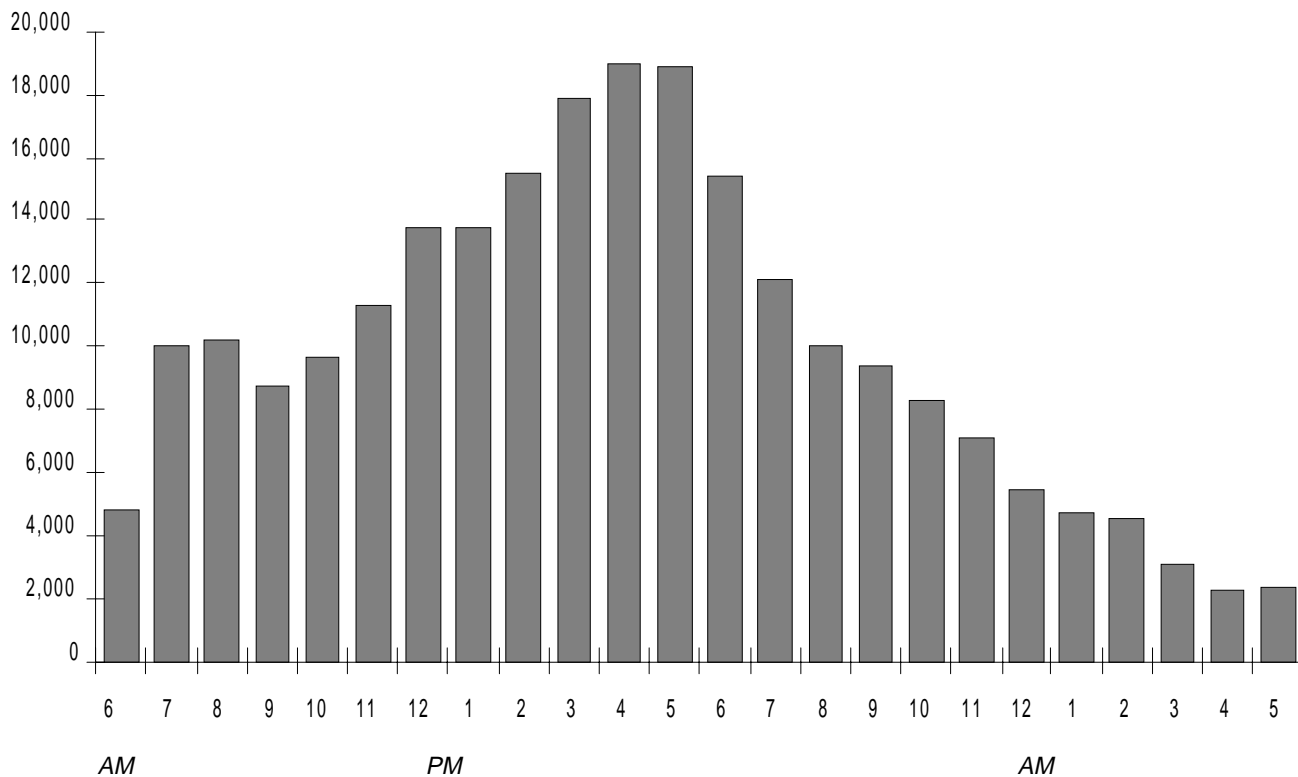




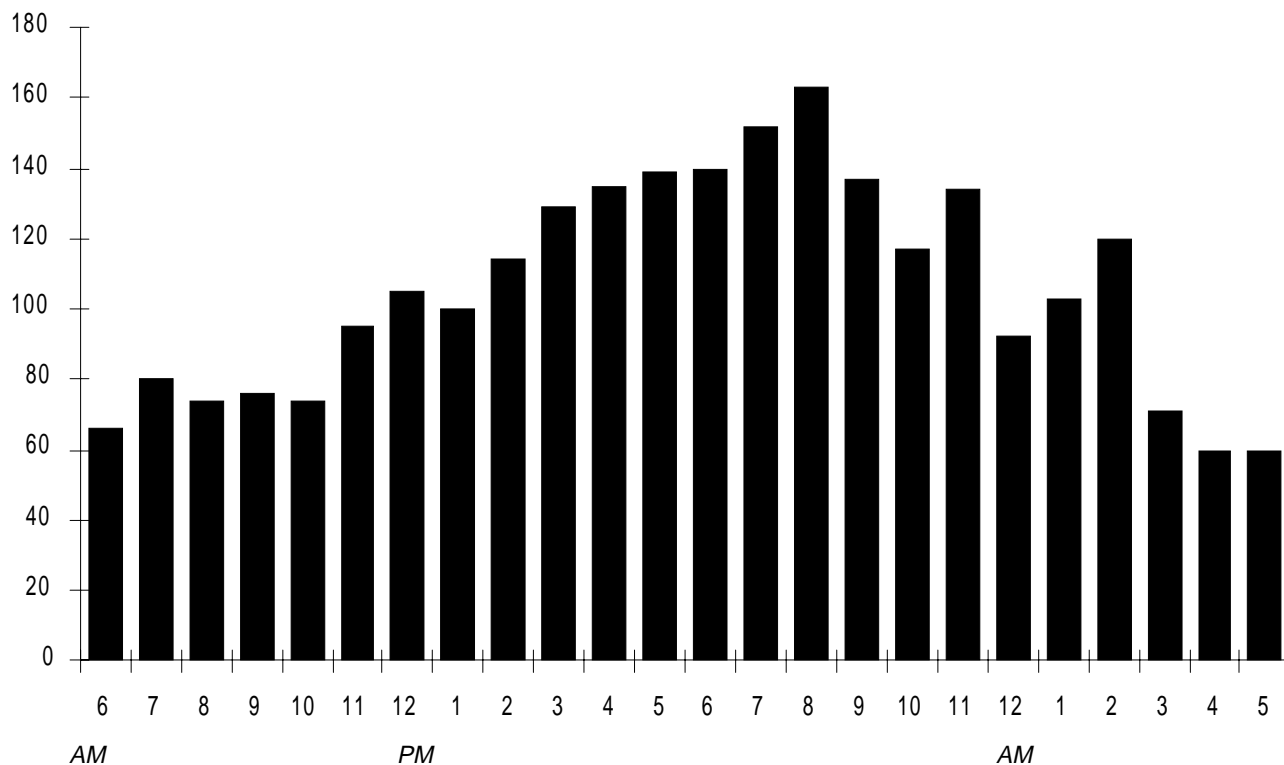
# ▶ Crashes by Time of Day

Florida Traffic  
Crash Facts 1996

## ALL CRASHES



## FATAL CRASHES



# ► Holiday Traffic Fatalities

Florida Traffic  
Crash Facts 1996

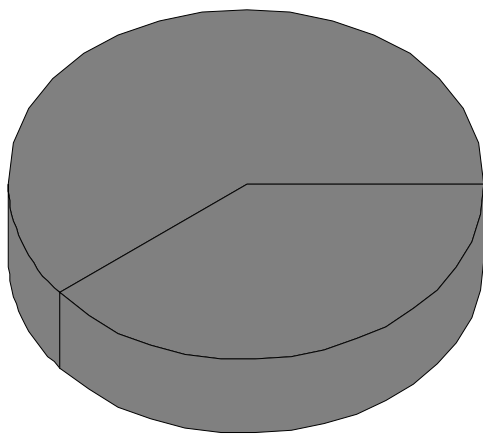
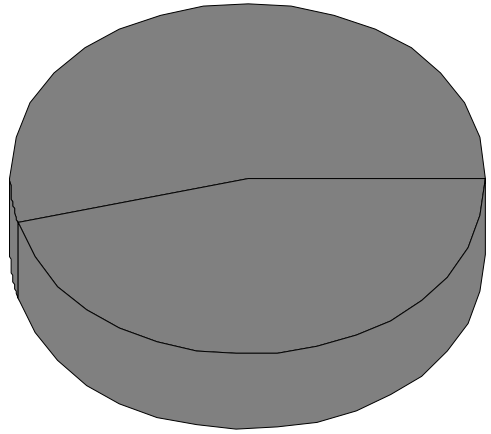
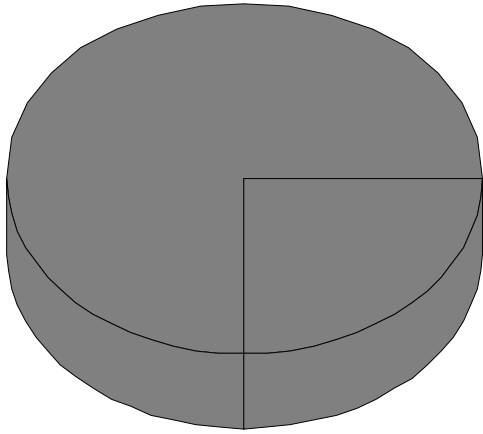
HOLIDAY PERIOD		1993	1994	1995**	1996
<b>New Year</b>	HOURS	102	78	78	96
	FATALITIES	42 <sup>†</sup>	29	21	46
	RATE*	.41 <sup>†</sup>	.37	.27	.48
<b>Memorial Day</b>	HOURS	78	78	96	96
	FATALITIES	24	24	35	30
	RATE*	.31	.31	.36	.31
<b>Independence Day</b>	HOURS	78	78	120	120
	FATALITIES	30	28	49	41
	RATE*	.38	.36	.41	.34
<b>Labor Day</b>	HOURS	78	78	96	96
	FATALITIES	30	28	34	22
	RATE*	.38	.36	.35	.23
<b>Thanksgiving</b>	HOURS	102	102	120	120
	FATALITIES	39	39	42	42
	RATE*	.38	.38	.35	.35
<b>Christmas</b>	HOURS	78	78	96	48
	FATALITIES	33	37	29	20
	RATE*	.42	.47	.30	.42
<b>All Days in Year</b>	HOURS	8,760	8,760	8,760	8,784
	FATALITIES	2,719	2,722	2,847	2,806
	RATE*	.31	.31	.33	.32

\*FATALITIES PER HOUR

\*\*AFTER NEW YEAR 1995, HOLIDAY PERIODS BEGIN WITH A FULL DAY.

OTHER YEARS' HOLIDAY PERIODS BEGIN 6:00 PM THE FIRST DAY.

†REVISED



# ► Age of Drivers in Crashes

Florida Traffic  
Crash Facts 1996

## FLORIDA RESIDENT DRIVERS IN ALL CRASHES BY AGE

	DRIVER LICENSES ISSUED	PERCENT	IN ALL CRASHES	PERCENT	DRINKING DRIVERS	PERCENT
UNDER 15	0	0.00%	2,365	0.64%	25	0.13%
15 TO 19	597,903	4.84%	40,361	11.00%	1,094	5.61%
20 TO 24	972,042	7.87%	47,439	12.93%	2,743	14.06%
25 TO 29	1,250,846	10.13%	44,974	12.26%	2,920	14.96%
30 TO 34	1,371,155	11.11%	44,437	12.11%	3,112	15.95%
35 TO 39	1,374,072	11.13%	40,992	11.17%	2,933	15.03%
40 TO 44	1,219,916	9.88%	33,081	9.02%	2,216	11.36%
45 TO 49	1,071,192	8.68%	26,390	7.19%	1,451	7.44%
50 TO 54	877,400	7.11%	19,339	5.27%	850	4.36%
55 TO 59	708,502	5.74%	14,701	4.01%	583	2.99%
60 TO 64	648,959	5.26%	11,939	3.25%	428	2.19%
65 TO 69	680,682	5.51%	10,906	2.97%	352	1.80%
70 TO 74	638,923	5.18%	9,726	2.65%	277	1.42%
75 TO 79	488,123	3.95%	7,744	2.11%	153	0.78%
80 TO 84	289,999	2.35%	4,830	1.32%	62	0.32%
85 AND OVER	153,884	1.25%	3,476	0.95%	93	0.48%
NOT STATED	0	0.00%	4,138	1.13%	221	1.13%
TOTAL	12,343,598		366,838		19,513	

## FLORIDA RESIDENT DRIVERS IN FATAL CRASHES BY AGE

	DRIVER LICENSES ISSUED	PERCENT	IN FATAL CRASHES	PERCENT	DRINKING DRIVERS	PERCENT
UNDER 15	0	0.00%	26	0.69%	0	0.00%
15 TO 19	597,903	4.84%	370	9.78%	34	5.11%
20 TO 24	972,042	7.87%	476	12.59%	103	15.47%
25 TO 29	1,250,846	10.13%	436	11.53%	104	15.62%
30 TO 34	1,371,155	11.11%	430	11.37%	106	15.92%
35 TO 39	1,374,072	11.13%	359	9.49%	107	16.07%
40 TO 44	1,219,916	9.88%	322	8.51%	79	11.86%
45 TO 49	1,071,192	8.68%	251	6.64%	37	5.56%
50 TO 54	877,400	7.11%	206	5.45%	28	4.20%
55 TO 59	708,502	5.74%	161	4.26%	19	2.85%
60 TO 64	648,959	5.26%	137	3.62%	13	1.95%
65 TO 69	680,682	5.51%	133	3.52%	15	2.25%
70 TO 74	638,923	5.18%	129	3.41%	9	1.35%
75 TO 79	488,123	3.95%	139	3.68%	6	0.90%
80 TO 84	289,999	2.35%	108	2.86%	2	0.30%
85 AND OVER	153,884	1.25%	66	1.75%	1	0.15%
NOT STATED	0	0.00%	33	0.87%	3	0.45%
TOTAL	12,343,598		3,782		666	



Age of Driver	Driver Licenses Issued	%	Drivers In All Crashes	%	Drinking Drivers In All Crashes	%	Drivers In Fatal Crashes	%	Drinking Drivers In Fatal Crashes	%
Under 15	0	0.00%	2,365	0.64%	25	0.13%	26	0.69%	0	0.00%
15	49,418	0.35%	1,040	0.28%	21	0.11%	20	0.53%	0	0.00%
16	106,514	0.82%	7,808	2.13%	113	0.58%	78	2.06%	7	1.05%
17	130,622	1.02%	9,806	2.67%	210	1.08%	82	2.17%	12	1.80%
18	147,013	1.20%	10,968	2.99%	357	1.83%	104	2.75%	7	1.05%
19	164,336	1.28%	10,739	2.93%	393	2.01%	86	2.27%	8	1.20%
20	170,215	1.39%	9,715	2.65%	472	2.42%	95	2.51%	15	2.25%
21	183,400	1.53%	9,666	2.63%	608	3.12%	95	2.51%	21	3.15%
22	199,463	1.64%	9,246	2.52%	516	2.64%	104	2.75%	22	3.30%
23	200,942	1.73%	9,266	2.53%	531	2.72%	97	2.56%	19	2.85%
24	218,022	1.94%	9,546	2.60%	616	3.16%	85			

---

\*License data on pages 12 and 13 are numbers of Florida driver licenses.  
 Driver data are Florida resident drivers in crashes.

# ► Safety Equipment Use\*

Florida Traffic  
Crash Facts 1 9 9 6

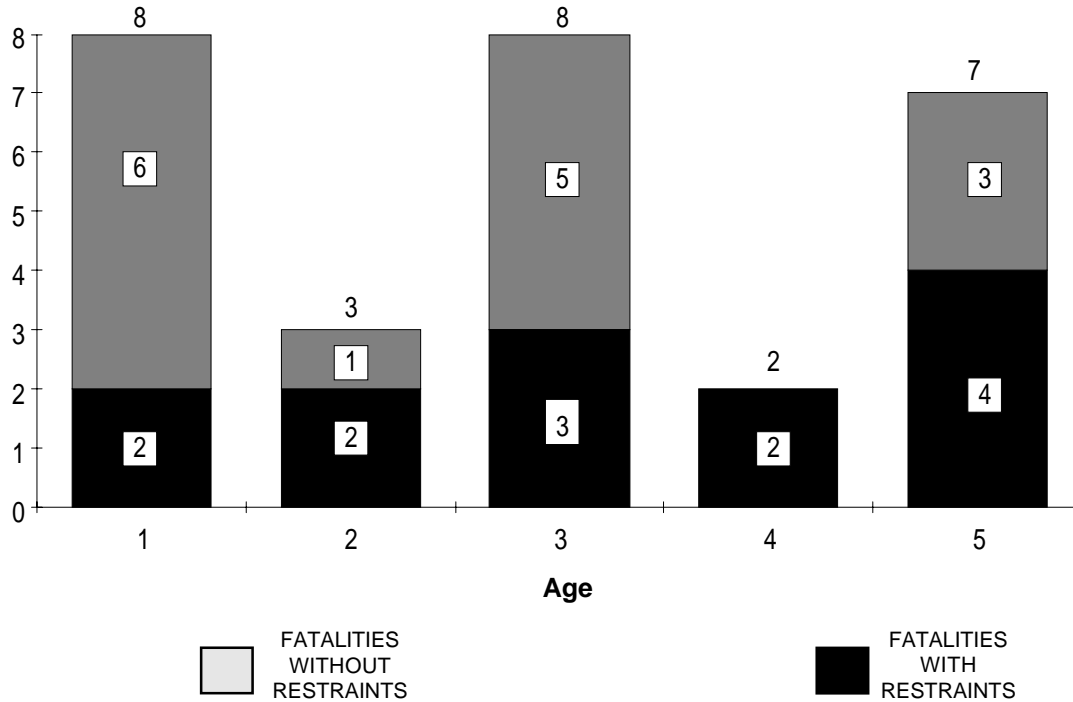
VEHICLE OCCUPANT	No Injury	Possible Injury	Non-Incapacitating Injury	Incapacitating Injury	Fatal	% of Fatalities	Total
With Safety Belts	267,891	98,372	45,011	15,565	533	27.2%	427,372
With Safety Belts & Air Bags	14,464	8,258	6,374	2,061	121	6.2%	31,278
With Air Bags (Only)	512	552	444	218	40	2.0%	1,766
With Child Safety Restraint	8,356	1,927	682	125	17	0.9%	11,107
Not Using Safety Equipment	45,861	17,687	16,036	8,706	1,250	63.7%	89,540
<b>TOTAL</b>	<b>337,084</b>	<b>126,796</b>	<b>68,547</b>	<b>26,675</b>	<b>1,961</b>	<b>100.0%</b>	<b>561,063</b>
<b>MOTORCYCLIST</b>							
With Safety Helmet	241	618	1,509	1,071	115	83.3%	3,554
Without Safety Helmet	213	274	442	240	23	16.7%	1,192
<b>TOTAL</b>	<b>454</b>	<b>892</b>	<b>1,951</b>	<b>1,311</b>	<b>138</b>	<b>100.0%</b>	<b>4,746</b>
<b>BICYCLIST</b>							
With Safety Helmet	24	106	201	69	7	6.7%	407
Without Safety Helmet	489	1,978	2,969	1,083	98	93.3%	6,617
<b>TOTAL</b>	<b>513</b>	<b>2,084</b>	<b>3,170</b>	<b>1,152</b>	<b>105</b>	<b>100.0%</b>	<b>7,024</b>

\*Does not include cases with safety equipment use or injury level not stated.

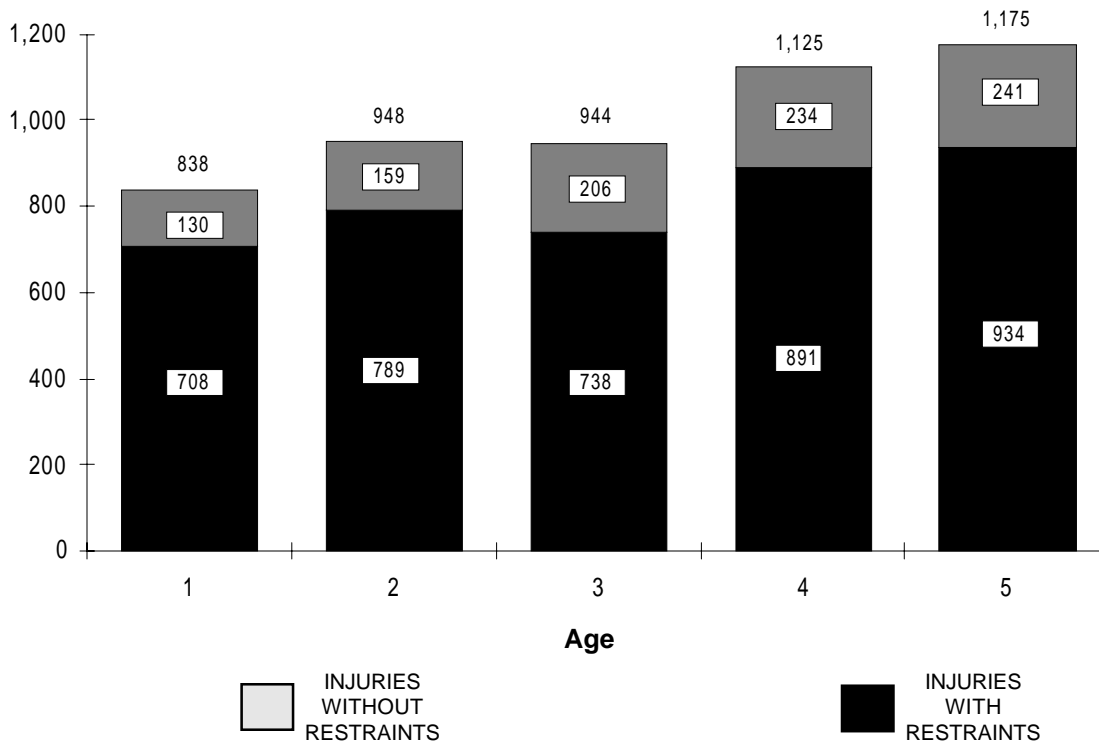
# ▶ Child Safety Restraint Use

Florida Traffic Crash Facts 1996

### TRAFFIC FATALITIES INVOLVING CHILDREN IN PASSENGER VEHICLES



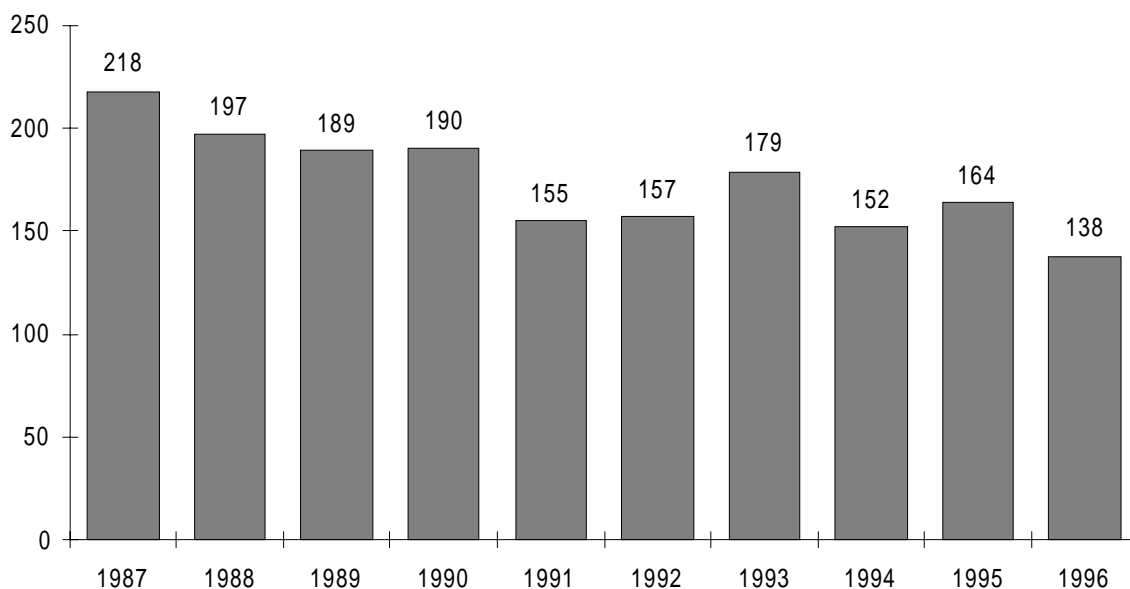
### TRAFFIC INJURIES INVOLVING CHILDREN IN PASSENGER VEHICLES



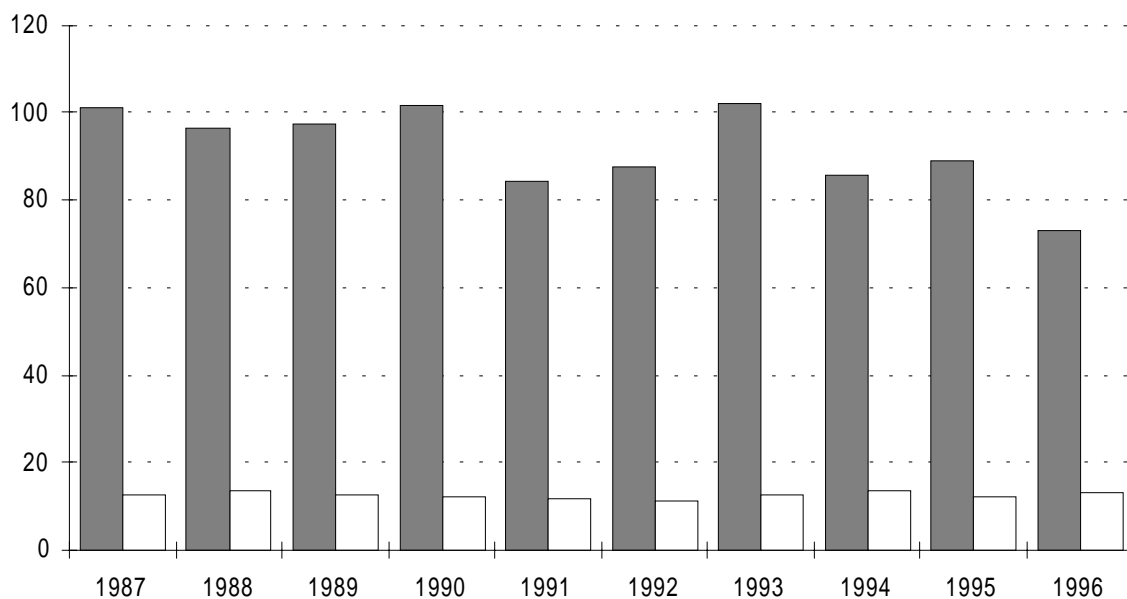
# Motorcyclist Fatality Trends

Florida Traffic  
Crash Facts 1996

### MOTORCYCLISTS KILLED



### MOTORCYCLIST FATALITY RATE\* (COMPARED TO ALL MOTOR VEHICLE DRIVERS)



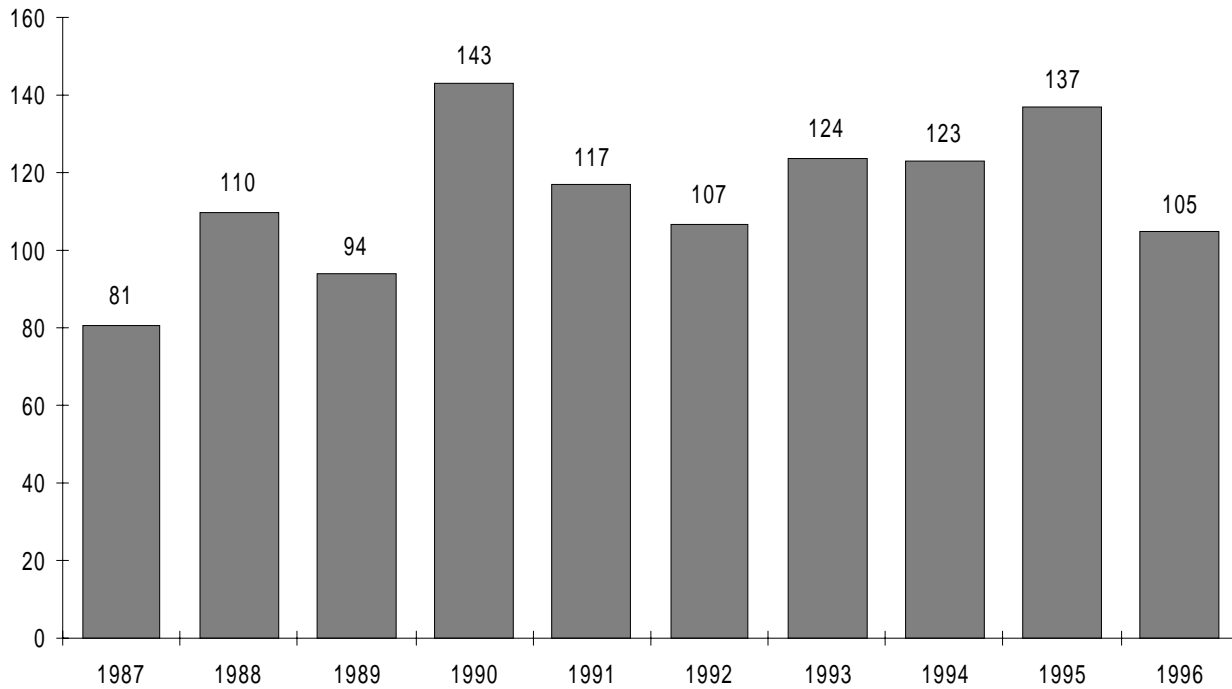
\*PER 100,000 REGISTERED VEHICLES



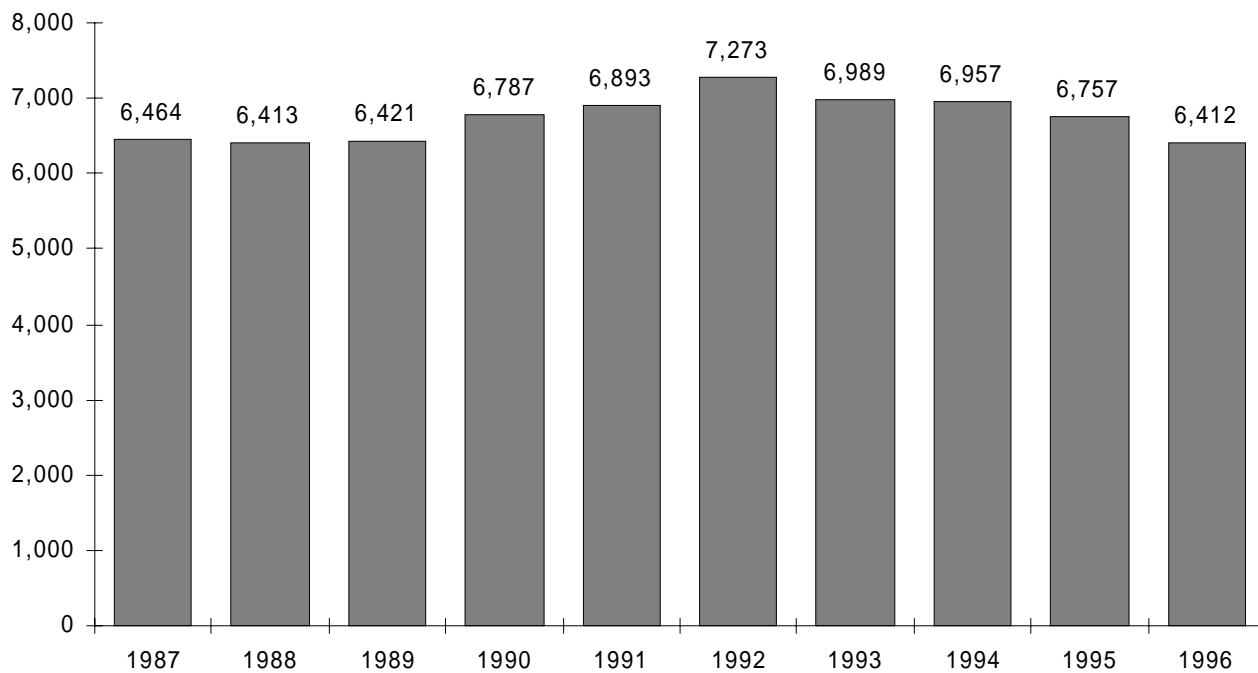
# ► Bicyclist Crash Trends

Florida Traffic  
Crash Facts 1996

## BICYCLISTS KILLED



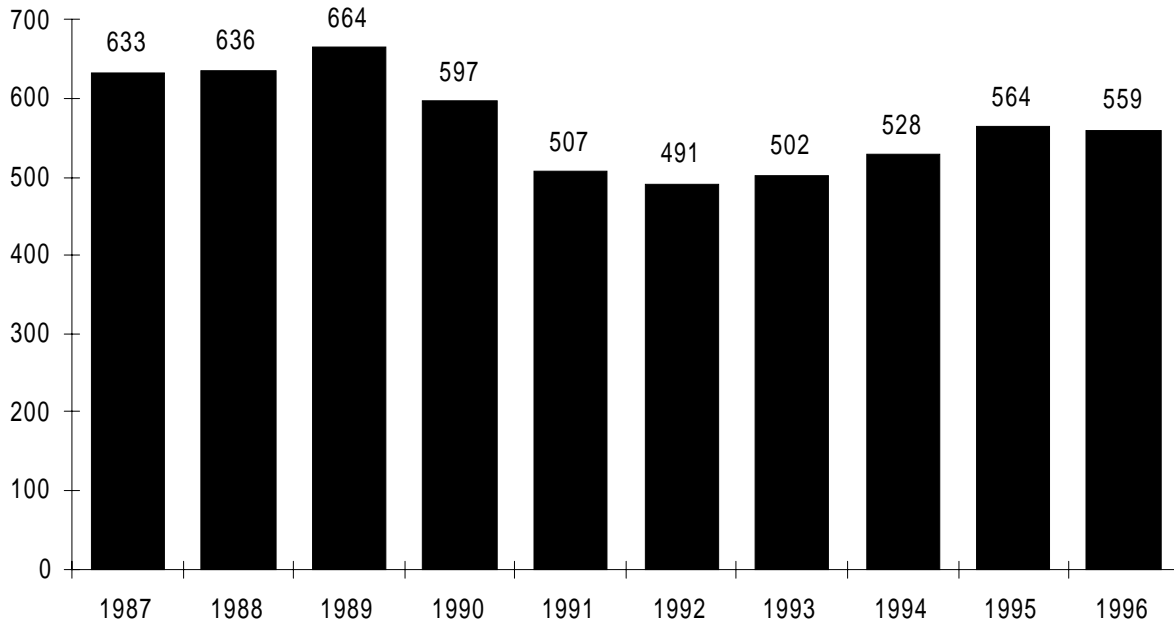
## BICYCLISTS INJURED



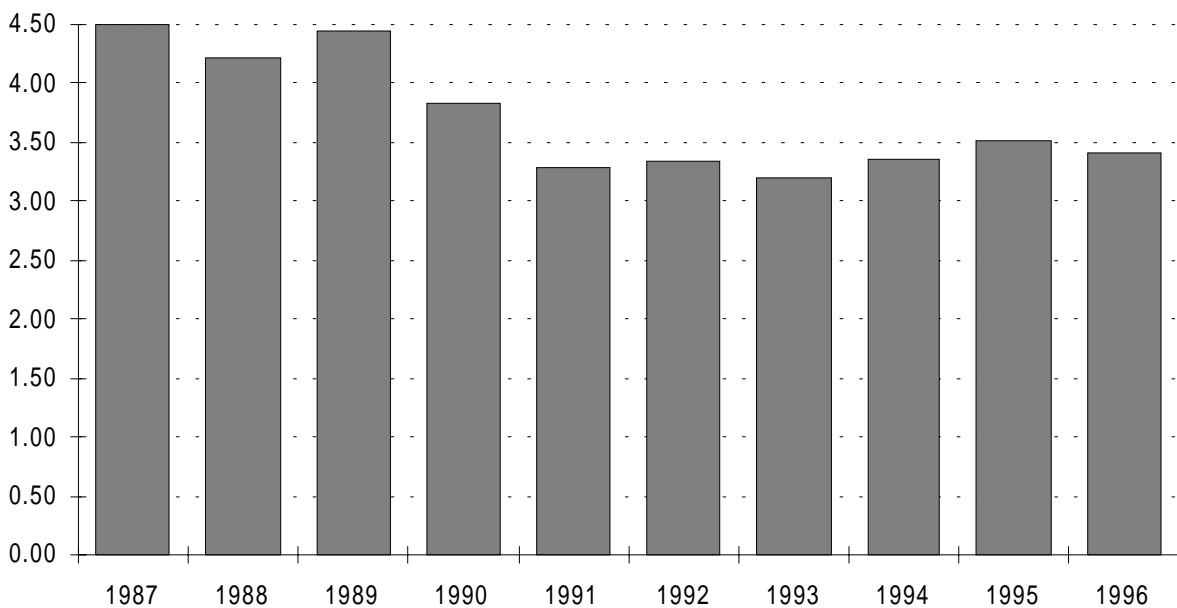
# ► Pedestrian Fatality Trends

Florida Traffic  
Crash Facts 1996

## PEDESTRIANS KILLED



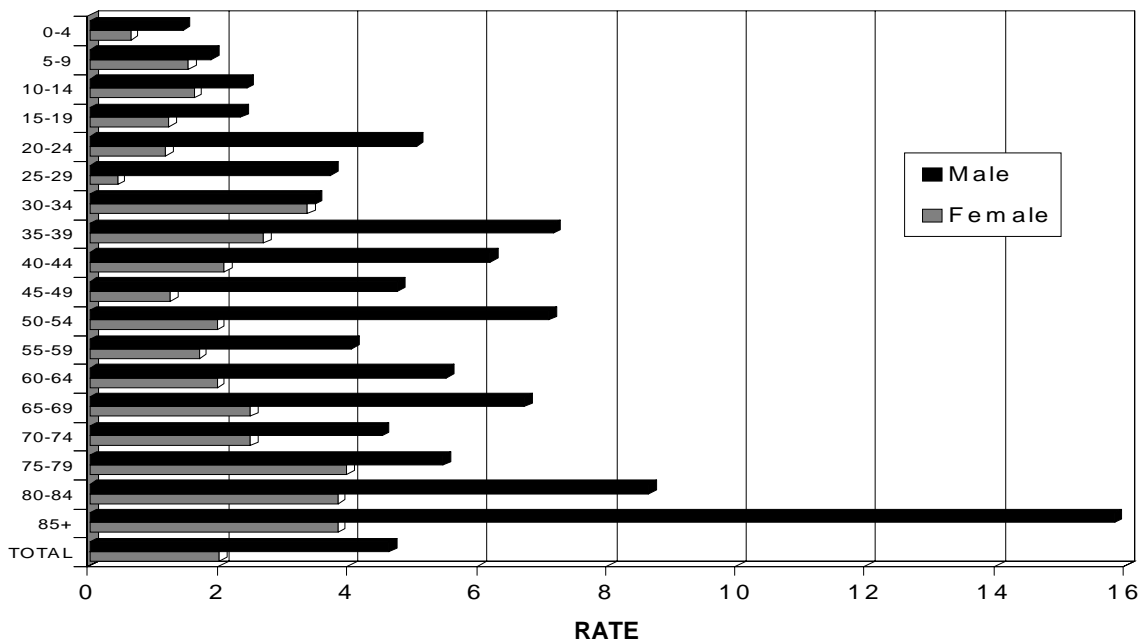
## PEDESTRIAN FATALITY RATE\*



\*FLORIDA RESIDENT PEDESTRIAN FATALITIES PER 100,000 RESIDENTS

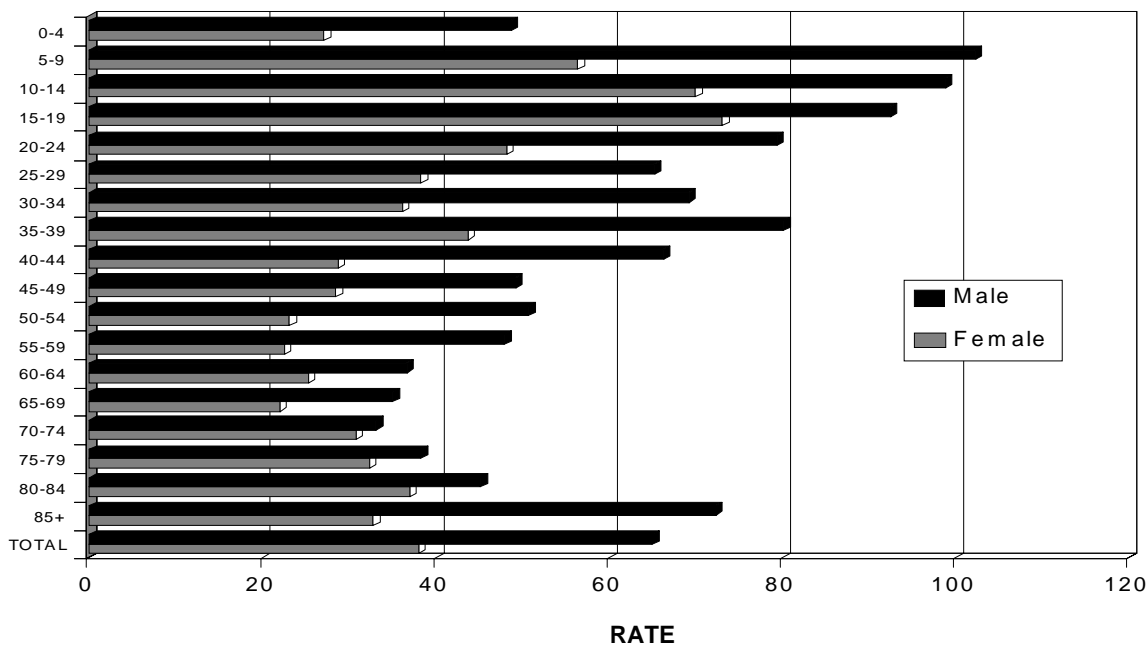
# ► Pedestrian Crash Rates

## PEDESTRIAN FATALITY RATE\* BY SEX AND AGE



\*RESIDENT PEDESTRIANS KILLED PER 100,000 POPULATION IN AGE GROUP

## PEDESTRIAN INJURY RATE\* BY SEX AND AGE



\*RESIDENT PEDESTRIANS INJURED PER 100,000 POPULATION IN AGE GROUP

# ► Pedestrian Behavior and Pickup Truck Passengers

Florida Traffic  
Crash Facts 1 9 9 6

## Pedestrian Behavior in Crashes

Action	Fatalities	%	Fatalities & Injuries	%
Crossing At Intersection	75	13.4	1,160	13.5
Crossing Not At Intersection	290	51.9	3,197	37.1
Walking With Traffic	37	6.6	509	5.9
Walking Against Traffic	9	1.6	175	2.0
Standing Or Playing In Road	39	7.0	601	7.0
Pushing Or Working On Vehicle	2	0.4	50	0.6
Other Working In Road	3	0.5	132	1.5
Other	104	18.6	2,789	32.4
Not Stated	0	0.0	1	0.0
Total	559	100.0	8,614	100.0

## Passengers Riding in Body of Light (Pickup) Trucks

Age	In Crashes	Injured	Killed
0 to 4	24	15	0
5 to 9	90	45	3
10 to 14	162	72	3
15 to 19	273	157	1
20 to 24	110	60	2
25 to 29	50	28	0
30 to 34	50	27	1
35 to 39	37	19	1
40 to 44	22	8	0
45 to 49	15	9	1
50 to 54	9	8	0
55 to 59	7	5	0
60 to 64	4	2	0
65 to 69	3	3	0
70 to 74	3	1	0
75 to 79	1	0	0
80 to 84	2	2	0
85 and Over	0	0	0
Not Stated	38	9	0
Total	900	470	12

## ► Contributing Causes

Florida Traffic  
Crash Facts 1 9 9 6

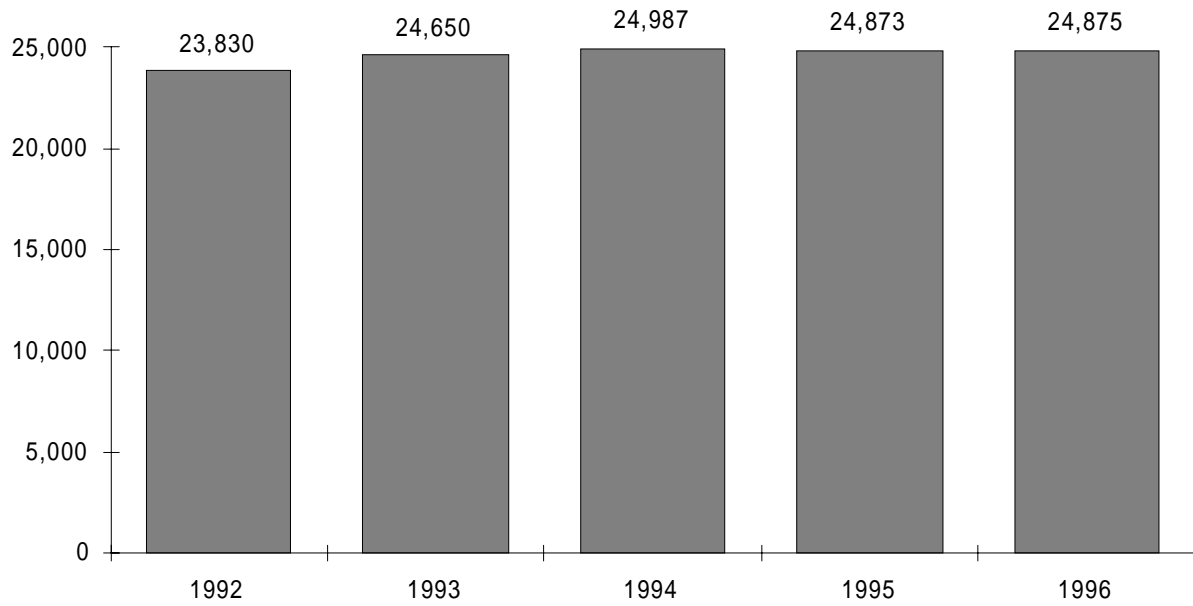
This table lists contributing causes reported by the investigating officer for drivers in traffic crashes. There can be up to three contributing causes per driver. Percentage figures compare the relative frequency of these causes.

Reported Contributing Cause	Frequency	
	In All Crashes	In Fatal Crashes
No Improper Driving/Action*	49.70%	35.73%
Careless Driving	17.35%	15.07%
Failed to Yield Right-of-Way	11.14%	9.65%
Disregarded Traffic Signal	2.19%	2.29%
Speed Too Fast	2.18%	11.12%
Alcohol - Under Influence	2.15%	5.00%
Followed Too Closely	1.75%	0.06%
Improper Turn	1.73%	1.49%
Improper Lane Change	1.37%	1.10%
Disregarded Stop Sign	0.99%	1.69%
Driving Wrong Side/Way	0.84%	4.80%
Improper Backing	0.78%	0.16%
Failed To Maintain Equipment/Vehicle	0.62%	0.64%
Improper Passing	0.31%	0.76%
Alcohol & Drugs - Under Influence	0.24%	0.80%
Drugs - Under Influence	0.04%	0.10%
All Other	6.60%	9.53%

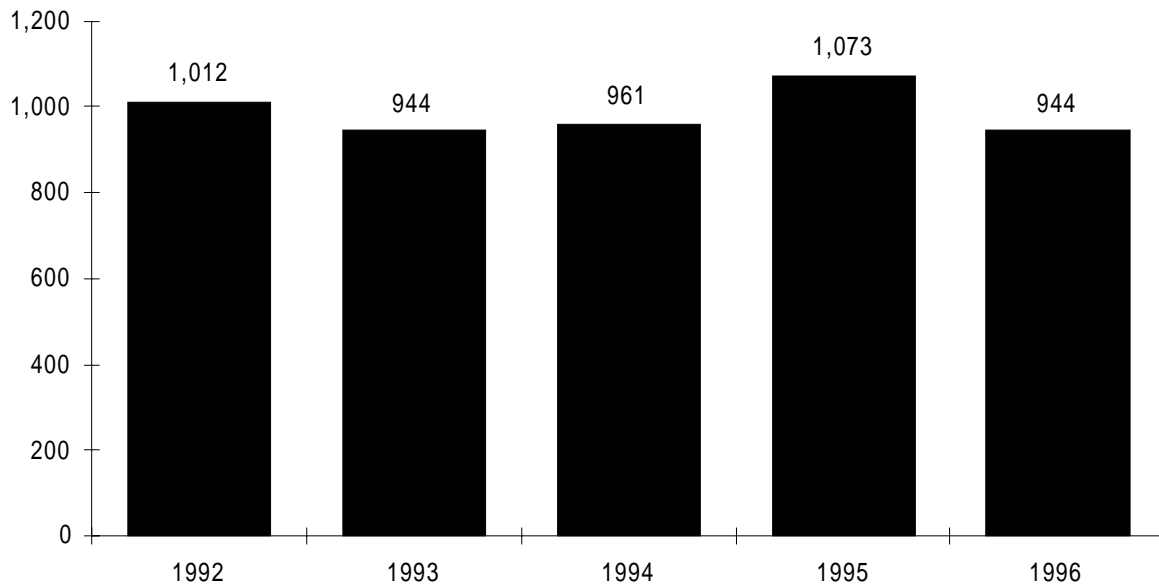
\*Drivers in this category typically represent those involved in crashes attributed to other drivers. At least one involved driver is reported contributory in about 95% of crashes.

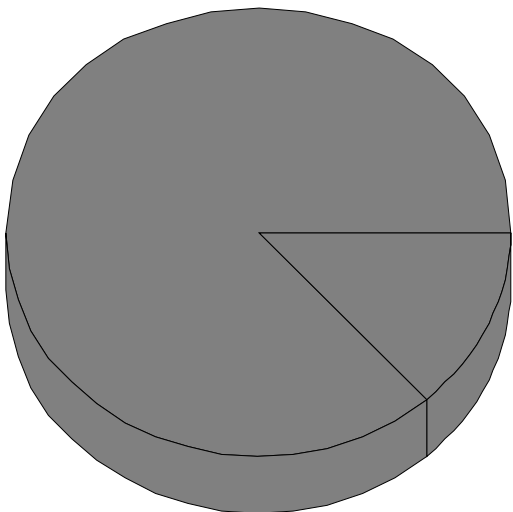
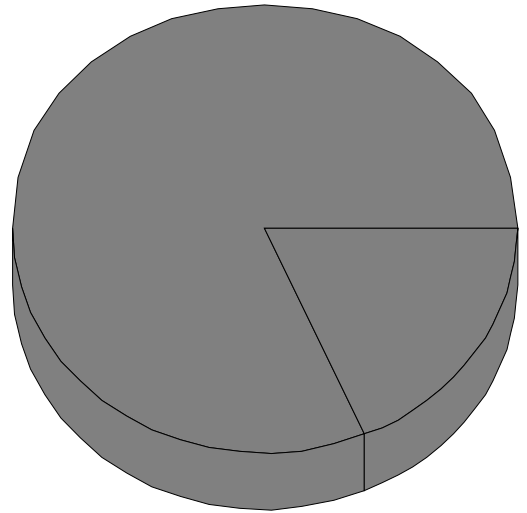
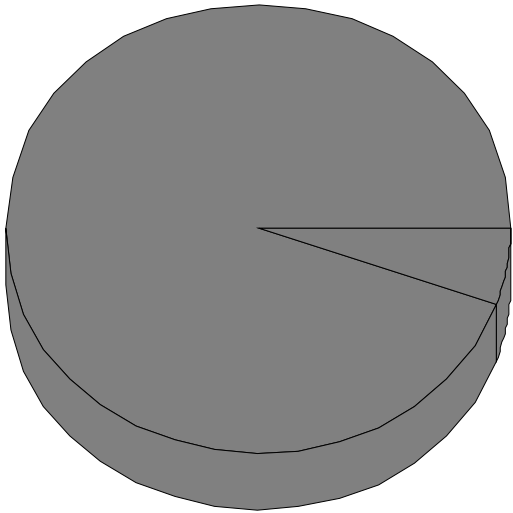
# ▶ Alcohol-Related Crash Trends | Florida Traffic Crash Facts 1996

## ALCOHOL-RELATED CRASHES



## ALCOHOL-RELATED FATALITIES







**Leave blank!**





# ► Fatality Trend by County

Florida Traffic  
Crash Facts 1996

COUNTY	1992	1993	1994	1995	1996	COUNTY	1992	1993	1994	1995	1996
ALACHUA	40	42	42	31	45	LEON	38	29	37	40	31
BAKER	6	4	5	5	8	LEVY	11	4	6	5	9
BAY	21	17	26	33	32	LIBERTY	2	0	4	1	1
BRADFORD	7	10	7	7	4	MADISON	6	7	4	17	5
BREVARD	71	68	62	87	74	MANATEE	28	42	48	51	55
BROWARD	180	210	215	210	210	MARION	64	79	56	79	49
CALHOUN	4	2	9	3	9	MARTIN	17	21	32	26	20
CHARLOTTE	20	26	18	23	26	MONROE	30	25	26	22	21
CITRUS	18	23	21	35	22	NASSAU	27	14	14	18	13
CLAY	11	16	20	20	20	OKALOOSA	24	24	21	28	29
COLLIER	46	46	35	49	44	OKEECHOBEE	6	16	11	6	12
COLUMBIA	14	26	22	14	27	ORANGE	102	117	120	144	140
DADE	319	365	307	333	326	OSCEOLA	35	25	44	40	43
DE SOTO	13	15	11	12	9	PALM BEACH	164	187	200	200	199
DIXIE	6	9	6	2	5	PASCO	45	67	74	67	60
DUVAL	93	103	111	117	122	PINELLAS	108	100	106	122	128
ESCAMBIA	39	40	55	47	40	POLK	102	118	90	129	103
FLAGLER	13	10	7	11	10	PUTNAM	18	18	25	21	17
FRANKLIN	3	2	2	2	1	ST. JOHNS	26	25	12	20	22
GADSDEN	20	16	16	14	17	ST. LUCIE	34	29	43	40	43
GILCHRIST	5	5	3	3	3	SANTA ROSA	21	26	16	27	18
GLADES	5	7	4	6	14	SARASOTA	43	35	44	46	49
GULF	3	4	3	2	3	SEMINOLE	27	30	36	40	30
HAMILTON	4	8	9	8	5	SUMTER	19	15	8	8	24
HARDEE	10	13	7	8	11	SUWANNEE	11	12	17	15	15
HENDRY	15	8	19	18	15	TAYLOR	6	3	6	9	4
HERNANDO	28	32	35	17	39	UNION	1	6	4	1	1
HIGHLANDS	19	35	19	30	20	VOLUSIA	66	100	108	80	112
HILLSBOROUGH	182	168	198	203	188	WAKULLA	4	8	7	7	6
HOLMES	5	12	9	8	5	WALTON	19	18	11	14	8
INDIAN RIVER	9	20	19	25	24	WASHINGTON	7	12	6	9	7
JACKSON	15	12	14	12	17						
JEFFERSON	7	10	7	6	14	STATEWIDE*	2,480	2,719	2,722	2,847	2,806
LAFAYETTE	0	2	4	0	5						
LAKE	33	38	41	44	39						
LEE	85	82	98	70	78						

\*Statewide totals include fatalities with county unknown.

# ► Crash Trend by County

Florida Traffic  
Crash Facts 1 9 9 6

COUNTY	1992	1993	1994	1995	1996	COUNTY	1992	1993	1994	1995	1996
ALACHUA	2,990	3,336	3,349	3,414	3,671	LEON	4,194	4,164	4,511	4,921	5,013
BAKER	95	169	163	226	255	LEVY	251	263	290	303	370
BAY	1,753	1,718	1,777	2,085	2,238	LIBERTY	34	37	62	64	64
BRADFORD	357	332	367	369	324	MADISON	174	227	192	217	221
BREVARD	4,625	4,557	4,700	4,650	4,917	MANATEE	2,745	2,946	3,009	3,190	3,362
BROWARD	22,370	23,805	25,374	25,958	27,508	MARION	2,753	2,512	2,725	2,967	2,842
CALHOUN	110	113	97	102	119	MARTIN	1,206	1,231	1,316	1,455	1,511
CHARLOTTE	1,355	1,339	1,436	1,358	1,497	MONROE	1,169	1,254	1,165	1,123	1,185
CITRUS	873	899	951	1,060	1,121	NASSAU	476	472	398	401	443
CLAY	788	675	803	1,006	1,113	OKALOOSA	1,617	1,633	1,626	1,671	1,793
COLLIER	2,017	2,057	2,321	2,392	2,500	OKEECHOBEE	355	400	332	365	427
COLUMBIA	447	541	568	575	710	ORANGE	12,069	11,891	12,735	12,870	14,398
DADE	36,717	36,325	36,053	43,233	48,634	OSCEOLA	1,664	1,514	1,719	1,865	2,027
DE SOTO	333	265	297	315	313	PALM BEACH	13,201	13,388	14,448	14,929	14,756
DIXIE	98	129	90	145	148	PASCO	2,515	2,778	2,813	3,344	4,088
DUVAL	11,055	11,575	12,233	13,053	13,005	PINELLAS	10,354	10,471	10,971	11,919	12,359
ESCAMBIA	3,572	3,448	3,612	3,985	4,195	POLK	5,116	5,510	5,822	6,735	7,357
FLAGLER	264	307	338	360	385	PUTNAM	752	764	885	869	949
FRANKLIN	77	75	81	108	126	ST. JOHNS	1,330	1,273	1,321	1,297	1,448
GADSDEN	568	609	613	607	727	ST. LUCIE	1,940	2,011	2,115	2,200	2,251
GILCHRIST	63	65	78	90	115	SANTA ROSA	866	872	960	1,036	1,134
GLADES	86	117	115	93	95	SARASOTA	2,913	2,900	3,043	3,856	4,670
GULF	70	94	71	88	82	SEMINOLE	2,394	2,302	3,020	3,326	3,616
HAMILTON	114	128	139	126	144	SUMTER	363	344	439	394	429
HARDEE	268	274	305	266	276	SUWANNEE	260	291	298	296	380
HENDRY	352	350	363	330	340	TAYLOR	230	263	291	271	263
HERNANDO	895	910	1,005	993	1,121	UNION	60	76	83	87	91
HIGHLANDS	687	733	660	769	680	VOLUSIA	5,986	5,902	5,987	6,016	6,171
HILLSBOROUGH	17,289	17,168	16,259	21,071	21,445	WAKULLA	166	140	163	194	219
HOLMES	142	123	151	151	150	WALTON	369	412	389	384	478
INDIAN RIVER	957	1,079	1,091	1,191	1,215	WASHINGTON	166	156	146	182	202
JACKSON	461	452	482	458	535						
JEFFERSON	156	170	167	178	175	STATEWIDE*	196,176	199,039	206,183	228,589	241,377
LAFAYETTE	37	41	31	46	60						
LAKE	1,545	1,537	1,710	1,677	1,828						
LEE	4,759	4,937	4,855	7,170	4,810						

\*Statewide totals include crashes with county unknown.



# ▶ Alcohol-Related Crashes by County

Florida Traffic  
Crash Facts 1 9 9 6

COUNTY	Total Crashes	Alcohol-Related Crashes	Alcohol-Related Crashes as Percent of Total	COUNTY	Total Crashes	Alcohol-Related Crashes	Alcohol-Related Crashes as Percent of Total
ALACHUA	3,671	368	10.02	LEON	5,013	446	8.90
BAKER	255	44	17.25	LEVY	370	68	18.38
BAY	2,238	382	17.07	LIBERTY	64	15	23.44
BRADFORD	324	52	16.05	MADISON	221	15	6.79
BREVARD	4,917	803	16.33	MANATEE	3,362	487	14.49
BROWARD	27,508	2,243	8.15	MARION	2,842	319	11.22
CALHOUN	119	29	24.37	MARTIN	1,511	237	15.68
CHARLOTTE	1,497	183	12.22	MONROE	1,185	224	18.90
CITRUS	1,121	166	14.81	NASSAU	443	85	19.19
CLAY	1,113	169	15.18	OKALOOSA	1,793	380	21.19
COLLIER	2,500	374	14.96	OKEECHOBEE	427	71	16.63
COLUMBIA	710	127	17.89	ORANGE	14,398	1,421	9.87
DADE	48,634	2,661	5.47	OSCEOLA	2,027	241	11.89
DE SOTO	313	64	20.45	PALM BEACH	14,756	1,557	10.55
DIXIE	148	28	18.92	PASCO	4,088	493	12.06
DUVAL	13,005	1,291	9.93	PINELLAS	12,359	1,420	11.49
ESCAMBIA	4,195	664	15.83	POLK	7,357	800	10.87
FLAGLER	385	60	15.58	PUTNAM	949	152	16.02
FRANKLIN	126	35	27.78	ST. JOHNS	1,448	229	15.81
GADSDEN	727	121	16.64	ST. LUCIE	2,251	293	13.02
GILCHRIST	115	21	18.26	SANTA ROSA	1,134	202	17.81
GLADES	95	19	20.00	SARASOTA	4,670	587	12.57
GULF	82	18	21.95	SEMINOLE	3,616	394	10.90
HAMILTON	144	18	12.50	SUMTER	429	64	14.92
HARDEE	276	33	11.96	SUWANNEE	380	66	17.37
HENDRY	340	65	19.12	TAYLOR	263	51	19.39
HERNANDO	1,121	174	15.52	UNION	91	15	16.48
HIGHLANDS	680	90	13.24	VOLUSIA	6,171	772	12.51
HILLSBOROUGH	21,445	2,068	9.64	WAKULLA	219	57	26.03
HOLMES	150	22	14.67	WALTON	478	108	22.59
INDIAN RIVER	1,215	153	12.59	WASHINGTON	202	23	11.39
JACKSON	535	84	15.70				
JEFFERSON	175	34	19.43				
LAFAYETTE	60	12	20.00	STATEWIDE*	241,377	24,875	10.31
LAKE	1,828	231	12.64				
LEE	4,810	649	13.49				

\*Statewide totals include crashes with county unknown.

# ▶ Alcohol-Related Crashes by City

Florida Traffic  
Crash Facts 1 9 9 6

City	County	Total Crashes	Alcohol-Related Crashes	Alcohol-Related Crashes as % of Total	City	County	Total Crashes	Alcohol-Related Crashes	Alcohol-Related Crashes as % of Total
ALACHUA	ALACHUA	74	8	10.81	CLAIR-MEL	HILLSBOROUGH	25	2	8.00
ALFORD	JACKSON	1	0	0.00	CLEARWATER	PINELLAS	1724	188	10.90
ALTAMONTE SPRINGS	SEMINOLE	592	51	8.61	CLERMONT	LAKE	118	6	5.08
ALTHA	CALHOUN	1	1	100.00	CLEWISTON	HENDRY	83	7	8.43
ANNA MARIA	MANATEE	15	0	0.00	CLOUD LAKE	PALMBEACH	3	0	0.00
APALACHICOLA	FRANKLIN	27	5	18.52	COCOA	BREVARD	376	33	8.78
APOPKA	ORANGE	222	21	9.46	COCOA BEACH	BREVARD	261	40	15.33
ARCADIA	DE SOTO	79	19	24.05	COCOA WEST	BREVARD	14	1	7.14
ARCHER	ALACHUA	16	1	6.25	COCONUT CREEK	BROWARD	485	35	7.22
ATLANTIC BEACH	DUVAL	131	22	16.79	COLEMAN	SUMTER	1	0	0.00
ATLANTIS	PALMBEACH	5	1	20.00	COLLIER MANR/CRESTHAV	BROWARD	8	2	25.00
AUBURNDALE	POLK	270	29	10.74	COMBEE SETTLEMENT	POLK	1	0	0.00
AVON PARK	HIGHLANDS	119	9	7.56	CONWAY	ORANGE	5	0	0.00
AZALEA PARK	ORANGE	5	0	0.00	COOPER CITY	BROWARD	159	14	8.81
BAL HARBOR	DADE	67	7	10.45	CORAL GABLES	DADE	1033	66	6.39
BALDWIN	DUVAL	9	1	11.11	CORAL SPRINGS	BROWARD	1227	83	6.76
BARTOW	POLK	266	17	6.39	CORAL WAY VILLAGE	DADE	11	0	0.00
BAY HARBOR ISLANDS	DADE	43	4	9.30	COTTONDALE	JACKSON	3	1	33.33
BAYSHORE GARDENS	MANATEE	2	0	0.00	CRAWFORDVILLE	WAKULLA	3	0	0.00
BELLE GLADE	PALMBEACH	319	29	9.09	CRESCENT CITY	PUTNAM	21	2	9.52
BELLEAIR	PINELLAS	20	4	20.00	CRESTVIEW	OKALOOSA	147	17	11.56
BELLEAIR BEACH	PINELLAS	18	7	38.89	CROSS CITY	DIXIE	22	2	9.09
BELLEAIR BLUFFS	PINELLAS	30	2	6.67	CRYSTAL RIVER	CITRUS	127	11	8.66
BELLEVIEW	MARION	79	3	3.80	CUTLER RIDGE	DADE	48	5	10.42
BELVEDERE HOMES	PALMBEACH	5	1	20.00	CYPRESS GARDENS	POLK	1	0	0.00
BISCAYNE GARDENS	DADE	15	1	6.67	DADE CITY	PASCO	142	8	5.63
BISCAYNE PARK	DADE	32	3	9.38	DANIA	BROWARD	436	48	11.01
BLOUNTSTOWN	CALHOUN	16	1	6.25	DAVENPORT	POLK	1	1	100.00
BOCA CHICA NAS	MONROE	2	0	0.00	DAVIE	BROWARD	1388	128	9.22
BOCA RATON	PALMBEACH	1784	130	7.29	DAYTONA BEACH	VOLUSIA	2326	219	9.42
BONIFAY	HOLMES	1	0	0.00	DAYTONA BEACH AIRPORT	VOLUSIA	6	0	0.00
BONITA SPRINGS	LEE	94	16	17.02	DAYTONA BEACH SHORES	VOLUSIA	68	11	16.18
BOWLING GREEN	HARDEE	4	1	25.00	DE BARY	VOLUSIA	50	9	18.00
BOYNTON BEACH	PALMBEACH	778	82	10.54	DE LAND	VOLUSIA	323	42	13.00
BRADENTON	MANATEE	252	20	7.94	DE LEON SPRINGS	VOLUSIA	10	2	20.00
BRADENTON BEACH	MANATEE	6	2	33.33	DEERFIELD BEACH	BROWARD	848	66	7.78
BRANDON	HILLSBOROUGH	129	9	6.98	DEFUNIAK SPRINGS	WALTON	82	11	13.41
BRANFORD	SUWANNEE	2	1	50.00	DELRAY BEACH	PALMBEACH	797	68	8.53
BRENT	ESCAMBIA	85	6	7.06	DELTONA	VOLUSIA	329	40	12.16
BRINY BREEZES	PALMBEACH	3	0	0.00	DUNDEE	POLK	24	2	8.33
BRISTOL	LIBERTY	3	0	0.00	DUNEDIN	PINELLAS	470	42	8.94
BROADVIEW PARK	BROWARD	17	0	0.00	DUNNELLON	MARION	1	0	0.00
BRONSON	LEVY	15	2	13.33	EAGLE LAKE	POLK	27	1	3.70
BROOKSVILLE	HERNANDO	122	11	9.02	EAST AUBURNDALE	POLK	1	0	0.00
BROWARDALE	BROWARD	2	1	50.00	EAST LAKE ORIENT PARK	HILLSBOROUGH	4	1	25.00
BROWNS VILLAGE	DADE	1	0	0.00	EAST NAPLES	COLLIER	353	49	13.88
BUNCHE PARK	DADE	1	0	0.00	EATONVILLE	ORANGE	26	3	11.54
BUNNELL	FLAGLER	36	5	13.89	EBRO	WASHINGTON	3	0	0.00
BUSHNELL	SUMTER	15	3	20.00	ECKERD COLLEGE	PINELLAS	1	0	0.00
CALLAHAN	NASSAU	24	5	20.83	EDGEWATER	VOLUSIA	175	27	15.43
CALLOWAY	BAY	127	17	13.39	EDGEWOOD	ORANGE	44	3	6.82
CANOVA BEACH	BREVARD	2	0	0.00	EGLIN	OKALOOSA	1	0	0.00
CANTONMENT	ESCAMBIA	26	3	11.54	EGLIN AFB	OKALOOSA	1	1	100.00
CAPE CANAVERAL	BREVARD	82	26	31.71	EGYPT LAKE	HILLSBOROUGH	4	0	0.00
CAPE CORAL	LEE	851	95	11.16	EL PORTAL	DADE	20	0	0.00
CAROL CITY	DADE	196	9	4.59	ELLYSON FIELD NAS	ESCAMBIA	3	0	0.00
CARRABELLE	FRANKLIN	9	4	44.44	ENGLEWOOD	CHARLOTTE	89	13	14.61
CARVER RANCH ESTATES	BROWARD	9	1	11.11	ENGLEWOOD	SARASOTA	1	1	100.00
CASSELBERRY	SEMINOLE	491	67	13.65	EUSTIS	LAKE	179	18	10.06
CECIL FIELD NAS	DUVAL	1	1	100.00	EVERGLADES	COLLIER	2	1	50.00
CEDAR GROVE	BAY	32	6	18.75	FELLSMERE	INDIAN RIVER	5	2	40.00
CEDAR HMMCK/BRADS	MANATEE	1	0	0.00	FERNANDINA BEACH	NASSAU	79	3	3.80
CENTER HILL	SUMTER	1	0	0.00	FLA. MEMORIAL COLLEGE	ST. JOHNS	2	0	0.00
CENTURY	ESCAMBIA	8	0	0.00	FLAGLER BEACH	FLAGLER	41	10	24.39
CHATTAHOOCHEE	GADSDEN	31	4	12.90	FLORIDA A&M UNIVERSIT	LEON	45	1	2.22
CHIEFLAND	LEVY	44	9	20.45	FLORIDA ATLANTIC UNIV	PALMBEACH	22	1	4.55
CHIPLEY	WASHINGTON	41	2	4.88	FLORIDA CITY	DADE	7	1	14.29

# ► Alcohol-Related Crashes by City

Florida Traffic  
Crash Facts 1996

City	County	Total Crashes	Alcohol-Related Crashes	Alcohol-Related Crashes as % of Total	City	County	Total Crashes	Alcohol-Related Crashes	Alcohol-Related Crashes as % of Total
FLORIDA INST. OF TECH	BREVARD	1	0	0.00	INVERNESS	CITRUS	57	7	12.28
FLORIDA SOUTHERN COLL	POLK	2	0	0.00	ISLAMORADA	MONROE	48	7	14.58
FLORIDA STATE UNIV.	LEON	17	3	17.65	ISLANDIA	DADE	2	0	0.00
FORT MEADE	POLK	49	6	12.24	JACKSONVILLE	DUVAL	12200	1159	9.50
FORT MYERS	LEE	1321	136	10.30	JACKSONVILLE BEACH	DUVAL	429	70	16.32
FORT MYERS BEACH	LEE	24	9	37.50	JACKSONVILLE NAS	DUVAL	16	0	0.00
FORT MYERS SE	LEE	11	1	9.09	JACKSONVILLE UNIV.	DUVAL	3	1	33.33
FORT MYERS SW	LEE	13	3	23.08	JASPER	HAMILTON	15	2	13.33
FORT PIERCE	ST. LUCIE	675	71	10.52	JENNINGS	HAMILTON	2	0	0.00
FORT PIERCE NW	ST. LUCIE	22	1	4.55	JENSEN BEACH	MARTIN	111	19	17.12
FORT WHITE	COLUMBIA	6	1	16.67	JUNE PARK	BREVARD	2	0	0.00
FREEPORT	WALTON	8	2	25.00	JUNO BEACH	PALM BEACH	33	4	12.12
FROSTPROOF	POLK	19	1	5.26	JUPITER	PALM BEACH	512	63	12.30
FRUITLAND PARK	LAKE	52	5	9.62	JUPITER ISLAND	MARTIN	5	0	0.00
FT. LAUDERDALE	BROWARD	4812	503	10.45	KENDALL	DADE	283	10	3.53
FT. MYERS VIL/PIN MN	LEE	11	0	0.00	KENNEDY SPACE CENTER	BREVARD	33	1	3.03
FT. WALTON BEACH	OKALOOSA	286	53	18.53	KENNETH CITY	PINELLAS	56	4	7.14
GAINESVILLE	ALACHUA	1988	165	8.30	KEY BISCAYNE	DADE	63	2	3.17
GIFFORD	INDIAN RIVER	2	0	0.00	KEY COLONY BEACH	MONROE	4	0	0.00
GOLDEN BEACH	DADE	10	0	0.00	KEY LARGO	MONROE	201	33	16.42
GOLDEN GLADES	DADE	45	3	6.67	KEY WEST	MONROE	349	60	17.19
GOULDS	DADE	43	7	16.28	KEYSTONE HEIGHTS	CLAY	13	0	0.00
GRAND RIDGE	JACKSON	6	2	33.33	KISSIMEE	OSCEOLA	574	69	12.02
GREEN COVE SPRINGS	CLAY	47	3	6.38	LA BELLE	HENDRY	57	13	22.81
GREENACRES CITY	PALM BEACH	262	21	8.02	LA CROSSE	ALACHUA	2	1	50.00
GREENVILLE	MADISON	2	0	0.00	LADY LAKE	LAKE	70	8	11.43
GRETNA	GADSDEN	3	1	33.33	LAKE ALFRED	POLK	32	5	15.63
GROVELAND	LAKE	18	2	11.11	LAKE BUENA VISTA	ORANGE	48	6	12.50
GULF BREEZE	SANTA ROSA	77	9	11.69	LAKE BUTLER	UNION	17	1	5.88
GULF GATE ESTATES	SARASOTA	2	0	0.00	LAKE CARROLL	HILLSBOROUGH	1	0	0.00
GULF STREAM	PALM BEACH	8	0	0.00	LAKE CITY	COLUMBIA	141	22	15.60
GULFPORT	PINELLAS	119	13	10.92	LAKE CLARKE SHORES	PALM BEACH	16	2	12.50
HACIENDA	BROWARD	4	1	25.00	LAKE FOREST	BROWARD	3	0	0.00
HAINES CITY	POLK	298	20	6.71	LAKE HAMILTON	POLK	24	3	12.50
HALLANDALE	BROWARD	582	37	6.36	LAKE HELEN	VOLUSIA	12	5	41.67
HASTINGS	ST. JOHNS	6	0	0.00	LAKE HOLLOWAY	POLK	4	1	25.00
HAVANA	GADSDEN	25	5	20.00	LAKE MAGDALENE	HILLSBOROUGH	16	3	18.75
HAVERHILL	PALM BEACH	16	1	6.25	LAKE MARY	SEMINOLE	212	21	9.91
HAWTHORNE	ALACHUA	22	3	13.64	LAKE PARK	PALM BEACH	114	7	6.14
HIALEAH	DADE	5089	290	5.70	LAKE PLACID	HIGHLANDS	26	2	7.69
HIALEAH GARDENS	DADE	236	18	7.63	LAKE WALES	POLK	144	15	10.42
HIGH SPRINGS	ALACHUA	46	9	19.57	LAKE WORTH	PALM BEACH	758	111	14.64
HIGHLAND BEACH	PALM BEACH	16	0	0.00	LAKELAND	POLK	1625	153	9.42
HILLIARD	NASSAU	9	0	0.00	LAND O'LAKES	PASCO	43	5	11.63
HILLSBORO BEACH	BROWARD	20	2	10.00	LANTANA	PALM BEACH	219	31	14.16
HOBE SOUND	MARTIN	50	12	24.00	LARGO	PINELLAS	768	141	18.36
HOLDEN HILLS	ORANGE	3	0	0.00	LAUDERDALE LAKES	BROWARD	514	30	5.84
HOLLY HILL	VOLUSIA	183	28	15.30	LAUDERDALE-BY-THE-SEA	BROWARD	68	6	8.82
HOLLYWOOD	BROWARD	2946	209	7.09	LAUDERHILL	BROWARD	567	32	5.64
HOLLYWOOD RIDGE FARM	BROWARD	6	0	0.00	LAUREL HILL	OKALOOSA	3	0	0.00
HOLMES BEACH	MANATEE	55	14	25.45	LAWTEY	BRADFORD	2	0	0.00
HOMESTEAD	DADE	392	42	10.71	LAYTON	MONROE	3	0	0.00
HOMESTEAD AFB	DADE	7	0	0.00	LAZY LAKE VILLAGE	BROWARD	3	1	33.33
HOMOSASSA SPRINGS	CITRUS	7	1	14.29	LEE CO. AIRPORT POLIC	LEE	43	2	4.65
HORSESHOE BEACH	DIXIE	1	0	0.00	LEESBURG	LAKE	306	32	10.46
HOWEY-IN-THE-HILLS	LAKE	9	2	22.22	LEHIGH ACRES	LEE	56	12	21.43
HYPOLUXO	PALM BEACH	6	0	0.00	LEISURE CITY	DADE	10	0	0.00
IMMOKALEE	COLLIER	244	52	21.31	LETO	HILLSBOROUGH	1	1	100.00
INDIALANTIC	BREVARD	48	4	8.33	LIGHTHOUSE POINT	BROWARD	159	14	8.81
INDIAN CREEK VILLAGE	DADE	10	2	20.00	LIVE OAK	SUWANNEE	127	14	11.02
INDIAN HARBOUR BEACH	BREVARD	28	10	35.71	LONGBOAT KEY	MANATEE	13	2	15.38
INDIAN RIVER SHORES	INDIAN RIVER	1	0	0.00	LONGBOAT KEY	SARASOTA	22	1	4.55
INDIAN ROCKS BEACH	PINELLAS	51	11	21.57	LONGWOOD	SEMINOLE	187	16	8.56
INDIAN SHORES	PINELLAS	26	7	26.92	LYNN HAVEN	BAY	153	13	8.50
INDIANTOWN	MARTIN	41	15	36.59	MACCLENNY	BAKER	62	9	14.52
INGLIS	LEVY	10	3	30.00	MACDILL AFB	HILLSBOROUGH	3	1	33.33
INTERLACHEN	PUTNAM	42	3	7.14	MADEIRA BEACH	PINELLAS	73	9	12.33

# ▶ Alcohol-Related Crashes by City

Florida Traffic  
Crash Facts 1996

City	County	Total Crashes	Alcohol-Related Crashes	Alcohol-Related Crashes as % of Total	City	County	Total Crashes	Alcohol-Related Crashes	Alcohol-Related Crashes as % of Total
MADISON	MADISON	35	1	2.86	OLYMPIA HEIGHTS	DADE	2	1	50.00
MAITLAND	ORANGE	210	23	10.95	ONECO	MANATEE	18	0	0.00
MALABAR	BREVARD	17	7	41.18	OPA LOCKA	DADE	357	13	3.64
MALONE	JACKSON	4	0	0.00	ORANGE CITY	VOLUSIA	118	7	5.93
MANALAPAN	PALM BEACH	9	1	11.11	ORANGE PARK	CLAY	95	7	7.37
MANGONIA PARK	PALM BEACH	106	9	8.49	ORLANDO	ORANGE	5127	348	6.79
MARATHON	MONROE	128	19	14.84	ORLOVISTA	ORANGE	4	0	0.00
MARGATE	BROWARD	646	46	7.12	ORMOND BEACH	VOLUSIA	337	46	13.65
MARIANNA	JACKSON	102	8	7.84	ORMOND BY THE SEA	VOLUSIA	24	1	4.17
MARY ESTHER	OKALOOSA	39	5	12.82	OTTER CREEK	LEVY	4	1	25.00
MASCOTTE	LAKE	17	3	17.65	OVIEDO	SEMINOLE	202	9	4.46
MAYO	LAFAYETTE	12	0	0.00	PAHOKEE	PALM BEACH	54	5	9.26
MCCOY AFB	ORANGE	2	1	50.00	PALATKA	PUTNAM	341	28	8.21
MEDLEY	DADE	150	6	4.00	PALMBAY	BREVARD	465	81	17.42
MELBOURNE	BREVARD	772	110	14.25	PALM BEACH	PALM BEACH	145	21	14.48
MELBOURNE BEACH	BREVARD	17	7	41.18	PALM BEACH GARDENS	PALM BEACH	402	51	12.69
MELROSE PARK	BROWARD	1	0	0.00	PALM BEACH SHORES	PALM BEACH	38	3	7.89
MEMPHIS	MANATEE	5	0	0.00	PALM CITY	MARTIN	71	16	22.54
MERRITT ISLAND	BREVARD	456	82	17.98	PALM RIVER/CLAIR MEL	HILLSBOROUGH	10	1	10.00
MEXICO BEACH	BAY	10	0	0.00	PALM SHORES	BREVARD	3	2	66.67
MIAMI	DADE	9499	527	5.55	PALM SPRINGS	PALM BEACH	80	8	10.00
MIAMI BEACH	DADE	2493	245	9.83	PALMETTO	MANATEE	249	26	10.44
MIAMI LAKES	DADE	48	1	2.08	PANAMA CITY	BAY	868	105	12.10
MIAMI SHORES	DADE	182	9	4.95	PANAMA CITY BEACH	BAY	201	46	22.89
MIAMI SPRINGS	DADE	81	8	9.88	PARKER	BAY	63	5	7.94
MICANOPY	ALACHUA	10	3	30.00	PARKLAND	BROWARD	27	3	11.11
MICC. INDIAN RES.	DADE	14	5	35.71	PATRICK AFB	BREVARD	2	0	0.00
MIDDLEBURG	CLAY	11	4	36.36	PAXTON	WALTON	2	1	50.00
MILTON	SANTA ROSA	112	11	9.82	PEMBROKE PARK	BROWARD	170	20	11.76
MIMS	BREVARD	52	14	26.92	PEMBROKE PINES	BROWARD	1351	69	5.11
MINNEOLA	LAKE	9	1	11.11	PENSACOLA	ESCAMBIA	782	121	15.47
MIRAMAR	BROWARD	569	47	8.26	PERRINE	DADE	57	6	10.53
MONTICELLO	JEFFERSON	8	2	25.00	PERRY	TAYLOR	159	22	13.84
MOORE HAVEN	GLADES	6	2	33.33	PIERSON	VOLUSIA	15	2	13.33
MOUNT DORA	LAKE	188	21	11.17	PINE HILLS	ORANGE	133	4	3.01
MULBERRY	POLK	41	1	2.44	PINELLAS PARK	PINELLAS	766	89	11.62
MYRTLE GROVE	ESCAMBIA	52	10	19.23	PINEWOOD	DADE	7	2	28.57
NAPLES	COLLIER	395	35	8.86	PINL CO CAMPUS P.D.	PINELLAS	1	0	0.00
NARANJA	DADE	18	1	5.56	PLANT CITY	HILLSBOROUGH	628	52	8.28
NEPTUNE BEACH	DUVAL	102	21	20.59	PLANTATION	BROWARD	1463	85	5.81
NEW PORT RICHEY	PASCO	303	39	12.87	POLK CITY	POLK	20	3	15.00
NEW SMYRNA BEACH	VOLUSIA	307	33	10.75	POMPANO BEACH	BROWARD	2229	173	7.76
NEWBERRY	ALACHUA	46	6	13.04	POMPANO BEACH HLNDS	BROWARD	3	0	0.00
NICEVILLE	OKALOOSA	99	13	13.13	PONCE DE LEON				
NOKOMIS/LAUREL	SARASOTA	1	0	0.00					
NORTH ANDREWS GARDENS	BROWARD	4	1	25.00					
NORTH BAY VILLAGE	DADE	49	6	12.24					
NORTH FORT MYERS	LEE	99	16	16.16					
NORTH LAUDERDALE	BROWARD	235	20	8.51					
NORTH MIAMI	DADE	1427	42	2.94					
NORTH MIAMI BEACH	DADE	968	64	6.61					
NORTH NAPLES	COLLIER	219	35	15.98					
NORTH PALM BEACH	PALM BEACH	118	14	11.86					
NORTH PORT	SARASOTA	72	13	18.06					
NORTH REDINGTON BEACH	PINELLAS	8	1	12.50					
NORWOOD	DADE	1	0	0.00					
OAK HILL	VOLUSIA	10	2	20.00					
OAKLAND	ORANGE	30	4	13.33					
OAKLAND PARK	BROWARD	1310	106	8.09					
OCALA	MARION	1027	89	8.67					
OCEAN CITY	OKALOOSA	23	2	8.70					
OCEAN RIDGE	PALM BEACH	9	0	0.00					
OCEAN RIDGE PARK	MARTIN	2	0	0.00					
OCOEE	ORANGE	287	32	11.15					
OJUS	DADE	1	0	0.00					
OKALOOSA CNTY ARPT	OKALOOSA	2	0	0.00					
OKEECHOBEE	OKEECHOBEE	158	20	12.66					
OLDSMAR	PINELLAS	163	20	12.27					



# ▶ Alcohol-Related Crashes by City

Florida Traffic  
Crash Facts 1 9 9 6

City	County	Total Crashes	Alcohol-Related Crashes	Alcohol-Related Crashes as % of Total
SANIBEL	LEE	65	5	7.69
SANTA ROSA BEACH	WALTON	3	0	0.00
SARASOTA	SARASOTA	1574	186	11.82
SARASOTA S	SARASOTA	2	1	50.00
SARASOTA SE	SARASOTA	2	0	0.00
SATELLITE BEACH	BREVARD	60	12	20.00
SEA RANCH LAKES	BROWARD	24	3	12.50
SEBASTIAN	INDIAN RIVER	110	18	16.36
SEBRING	HIGHLANDS	135	14	10.37
SEMINOLE	PINELLAS	237	17	7.17
SEMINOLE PARK	PINELLAS	4	0	0.00
SEVILLE	VOLUSIA	7	2	28.57
SEWALLS POINT	MARTIN	17	3	17.65
SIESTA KEY	SARASOTA	1	0	0.00
SILVER SPRINGS SHORES	MARION	1	0	0.00
SKY LAKE	ORANGE	5	0	0.00
SNEADS	JACKSON	18	3	16.67
SOPCHOPPY	WAKULLA	3	0	0.00
SOUTH BAY	PALM BEACH	36	2	5.56
SOUTH DAYTONA	VOLUSIA	124	17	13.71
SOUTH MIAMI	DADE	233	8	3.43
SOUTH MIAMI HEIGHTS	DADE	1	0	0.00
SOUTH PALM BEACH	PALM BEACH	3	2	66.67
SOUTH PASADENA	PINELLAS	67	9	13.43
SOUTH PATRICK SHORES	BREVARD	7	3	42.86
SPRINGFIELD	BAY	97	10	10.31
ST. AUGUSTINE	ST. JOHNS	206	27	13.11
ST. AUGUSTINE BEACH	ST. JOHNS	43	10	23.26
ST. CLOUD	OSCEOLA	177	13	7.34
ST. LEO	PASCO	3	0	0.00
ST. MARKS	WAKULLA	1	1	100.00
ST. PETERSBURG	PINELLAS	3419	355	10.38
ST. PETERSBURG BEACH	PINELLAS	165	19	11.52
STARKE	BRADFORD	159	15	9.43
STEINHATCHEE	TAYLOR	1	1	100.00
STETSON UNIVERSITY	VOLUSIA	5	0	0.00
STUART	MARTIN	528	61	11.55
SUNNY ISLES	DADE	4	0	0.00
SUNRISE	BROWARD	585	47	8.03
SURFSIDE	DADE	104	11	10.58
SWEETWATER	DADE	30	2	6.67
SWEETWATER CREEK	HILLSBOROUGH	4	0	0.00
TALLAHASSEE	LEON	3903	281	7.20
TAMARAC	BROWARD	978	51	5.21
TAMPA	HILLSBOROUGH	10350	880	8.50
TARPON SPRINGS	PINELLAS	360	38	10.56
TAVARES	LAKE	116	8	6.90
TAVERNIER	MONROE	52	9	17.31
TEMPLE TERRACE	HILLSBOROUGH	189	18	9.52
TEQUESTA VILLAGE	PALM BEACH	35	7	20.00
TICE	LEE	11	0	0.00
TITUSVILLE	BREVARD	615	72	11.71
TREASURE ISLAND	PINELLAS	116	24	20.69
TRENTON	GILCHRIST	3	1	33.33
ULETA	DADE	7	1	14.29
UMATILLA	LAKE	25	1	4.00
UNIV. OF CENTRAL FLA.	ORANGE	14	1	7.14
UNIV. OF NORTH FLORID	DUVAL	17	1	5.88
UNIV. OF S. FLORIDA	HILLSBOROUGH	77	4	5.19
UNIV. OF WEST FLORIDA	ESCAMBIA	8	1	12.50
UNIVERSITY OF FLORIDA	ALACHUA	99	2	2.02
UNIVERSITY OF MIAMI	DADE	4	1	25.00
UNIVERSITY OF TAMPA	HILLSBOROUGH	8	1	12.50
VALPARAISO	OKALOOSA	27	5	18.52
VENICE	SARASOTA	193	18	9.33
VENICE SOUTH	SARASOTA	2	0	0.00
VERNON	WASHINGTON	1	0	0.00
VERO BEACH	INDIAN RIVER	313	29	9.27

City	County	Total Crashes	Alcohol-Related Crashes	Alcohol-Related Crashes as % of Total
VERO BEACH SOUTH	INDIAN RIVER	4	1	25.00
VIRGINIA GARDENS	DADE	25	3	12.00
WAHNETA	POLK	8	1	12.50
WALDO	ALACHUA	18	7	38.89
WARRINGTON	ESCAMBIA	104	24	23.08
WAUCHULA	HARDEE	69	7	10.14
WELAKA	PUTNAM	6	3	50.00
WEST BRADENTON	MANATEE	804	69	8.58
WEST GATE	PALM BEACH	1	0	0.00
WEST HOLLYWOOD	BROWARD	6	0	0.00
WEST MELBOURNE	BREVARD	134	10	7.46
WEST MIAMI	DADE	77	1	1.30
WEST PALM BEACH	PALM BEACH	1779	158	8.88
WEST PENSACOLA	ESCAMBIA	72	8	11.11
WEST WINTER HAVEN	POLK	2	0	0.00
WESTON	BROWARD	22	0	0.00
WESTVIEW	DADE	1	0	0.00
WEWAHITCHKA	GULF	4	1	25.00
WHITE SPRINGS	HAMILTON	9	0	0.00
WILDWOOD	SUMTER	23	0	0.00
WILLISTON	LEVY	40	3	7.50
WILTON MANORS	BROWARD	165	30	18.18
WINDERMERE	ORANGE	6	1	16.67
WINSTON	POLK	1	0	0.00
WINTER GARDEN	ORANGE	151	17	11.26
WINTER HAVEN	POLK	665	46	6.92
WINTER PARK	ORANGE	309	28	9.06
WINTER SPRINGS	SEMINOLE	118	14	11.86
YULEE	NASSAU	6	1	16.67
ZEPHYRHILLS	PASCO	166	11	6.63
ZOLFO SPRINGS	HARDEE	1	1	100.00



**Leave Blank!**

# ► Standard Summary

Florida Traffic  
Crash Facts 1 9 9 6

1996  
State of Florida  
Standard Summary  
of  
Motor Vehicle  
Traffic Crashes

▶ Appendix

Florida  
Traffic Crash  
Report Form

F L O R I D A

DEPARTMENT OF HIGHWAY SAFETY  
AND MOTOR VEHICLES



TRAFFIC CRASH  
FACTS

1996

OUR MISSION: MAKING HIGHWAYS SAFE THROUGH SERVICE, EDUCATION, AND ENFORCEMENT

**Florida Department of Highway Safety and Motor Vehicles  
Fred O. Dickinson, III, Executive Director**

*Prepared by*

Office of Management and Planning Services  
Neil Kirkman Building, Room A430  
Tallahassee, FL 32399-0505  
Telephone: (850) 414-5491

This publication is available on the Department home page at  
**<http://www.state.fl.us/hsmv>**

---

Florida Department of Highway Safety and Motor Vehicles  
Neil Kirkman Building, Room A430  
Tallahassee, FL 32399-0505

*Making Highways Safe through Service, Education, and Enforcement*